

Message from the School

The Social Justice School's mission is to catalyze an integrated and diverse community of learners to be scholar-activists who are designers of a more just world. Our academic model is rooted in social justice, social-emotional, and character development, makes learning meaningful and active through expeditionary learning, and empowers students to apply their learning through design thinking projects. For more information about our ongoing plans during the Covid-19 pandemic please visit our website.



📍 5450 3RD STREET NE, Washington, DC 20011
 🏠 Ward 5
 ☎️ (202) 938-8938

School Instructional Hours

Monday: 08:25AM - 03:45PM
Tuesday: 08:25AM - 03:45PM
Wednesday: 08:25AM - 12:30PM
Thursday: 08:25AM - 03:45PM
Friday: 08:25AM - 03:45PM

Total Students (2020-21 Ever-Enrolled):

53

Total Teachers: 6

Total School Leaders: 3

Grades Served: 5, 6, 7

Principal: Brandon Johnson

Title-I Status: Yes

Local Education Agency (LEA): Social Justice PCS

School Uniforms Required: Yes

Bus Line(s): E4, R1, R2, K2, 60, 64, 80, E2

Metro Line(s): Fort Totten Metro Station - Green, Red, and Yellow Lines

Before Care Offered: No

After Care Offered: Yes

- **Cost:** Free

School Program Information

STEM Focus
 Restorative Justice Program

Parent Organization

Parent Organization Offered: Yes

Parent Organization Contact: bria wade
 (bria@thesocialjusticeschool.org)

Parent Organization Website: Not Provided

Extracurricular & Enrichment Activities

Community-Based Learning Field Trips
 Freedom Schools
 Mentoring and Tutoring
 Debate
 Coding
 Theater
 Student Government
 Art

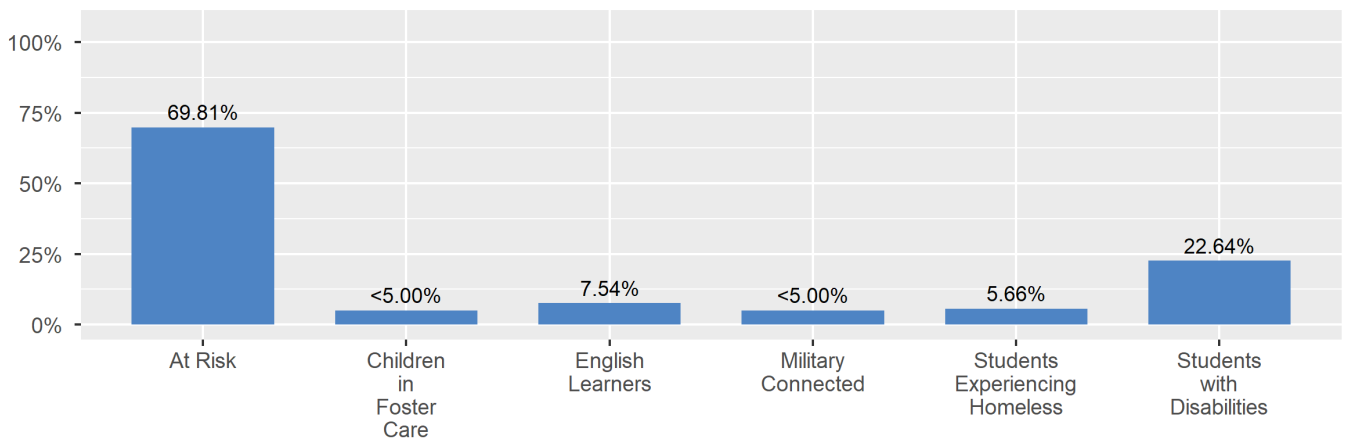
School Enrollment

The ever-enrolled count is the total number of students who are enrolled at any point during the school year; a student who attends a school for one day or 180 days is counted the same way. For this reason, the ever-enrolled count will always be larger than the audit count.

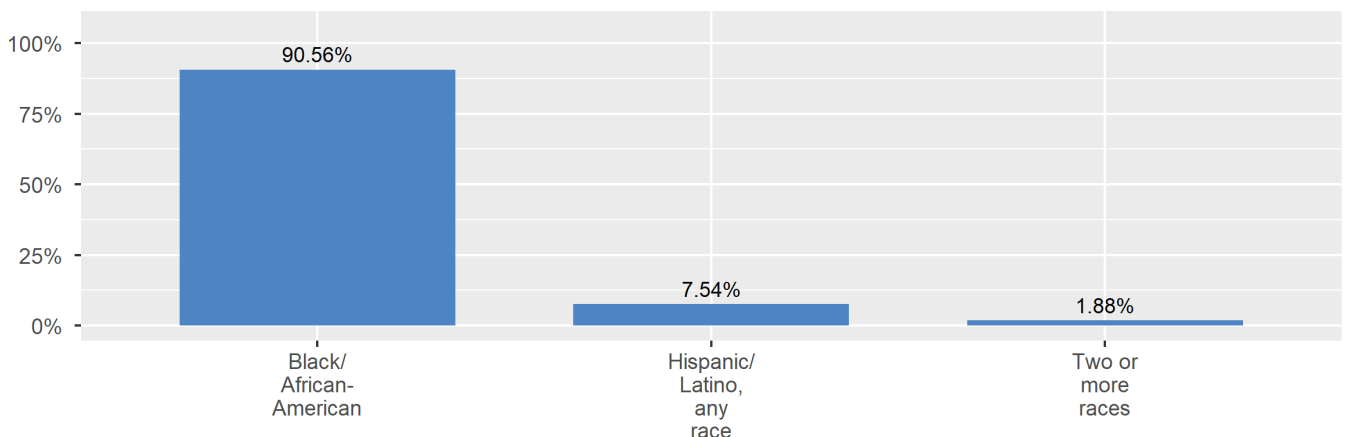
2020-21 Ever-Enrolled by Grade Level

Grade 05	Grade 06
17	36

Enrollment by Student Group



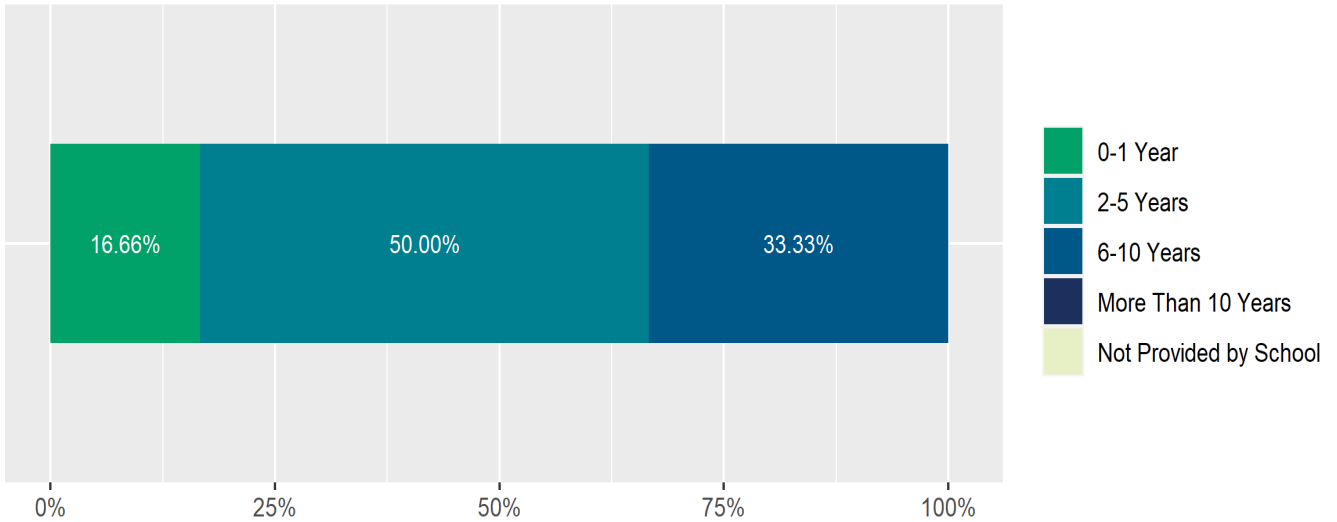
Enrollment by Race/Ethnicity



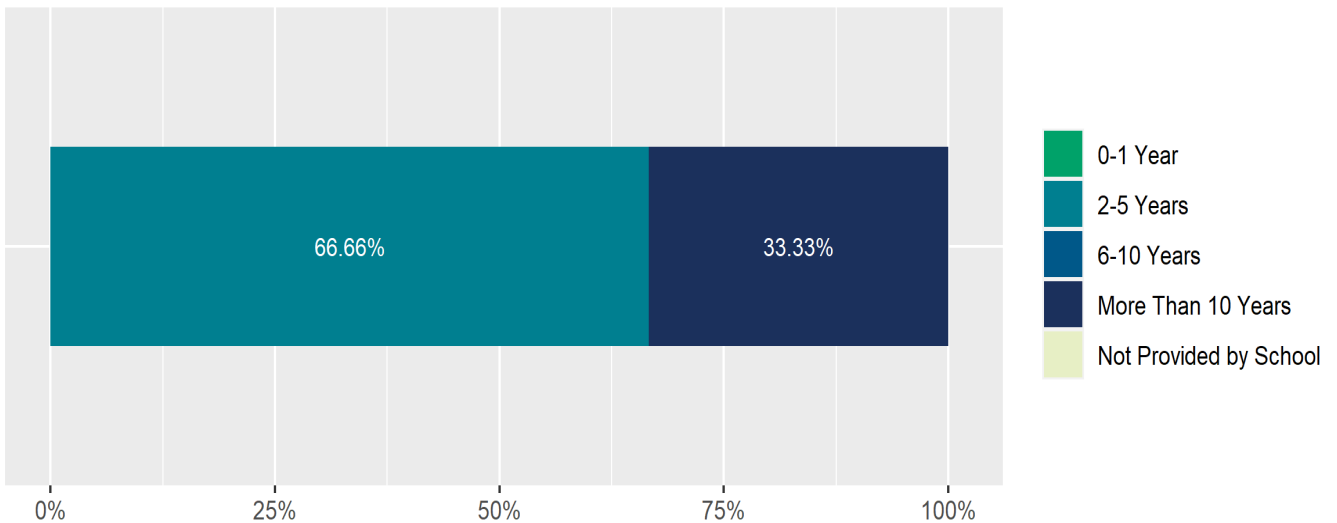
Teacher and School Leader Data

This page includes information about teacher experience levels in DC Public Schools and public charter schools. For DC Public Schools, it also includes information about credentialed and in-field teachers.

Teacher - Years of Experience



School Leader - Years of Experience

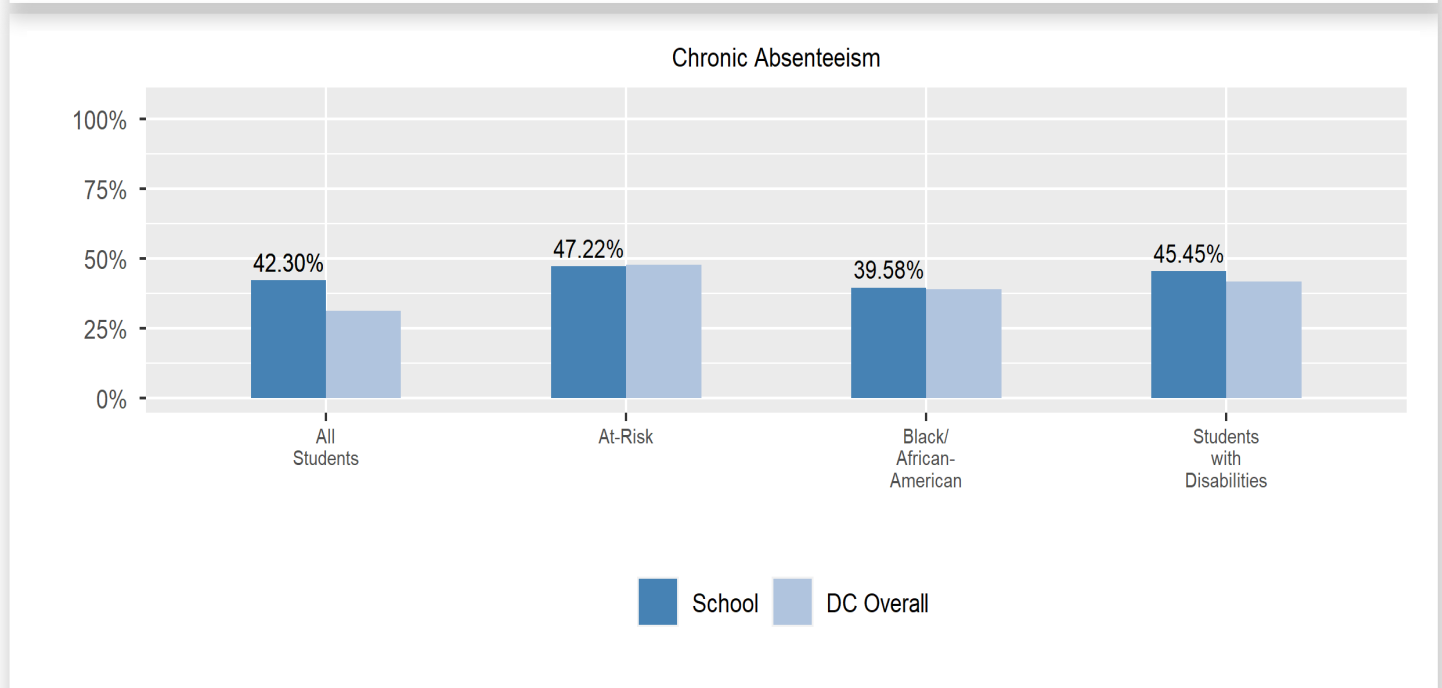
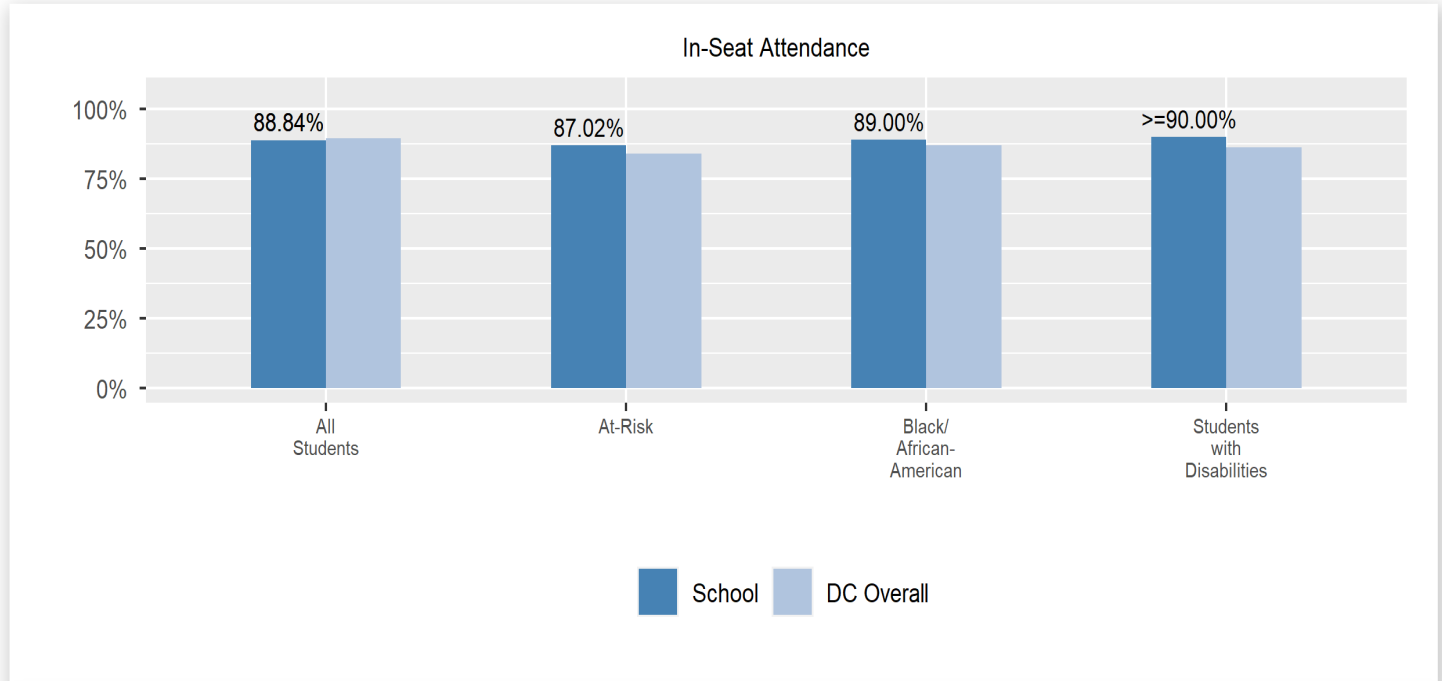


School Safety and Discipline

Information about discipline and school safety in DC, in accordance with the U.S. Department of Education's Civil Rights Data collection, including suspensions and expulsions for students, school related arrests, reported incidents of violence, bullying, and harassment are available in the OSSE Discipline report and data files (<https://osse.dc.gov/page/data-and-reports-0>).

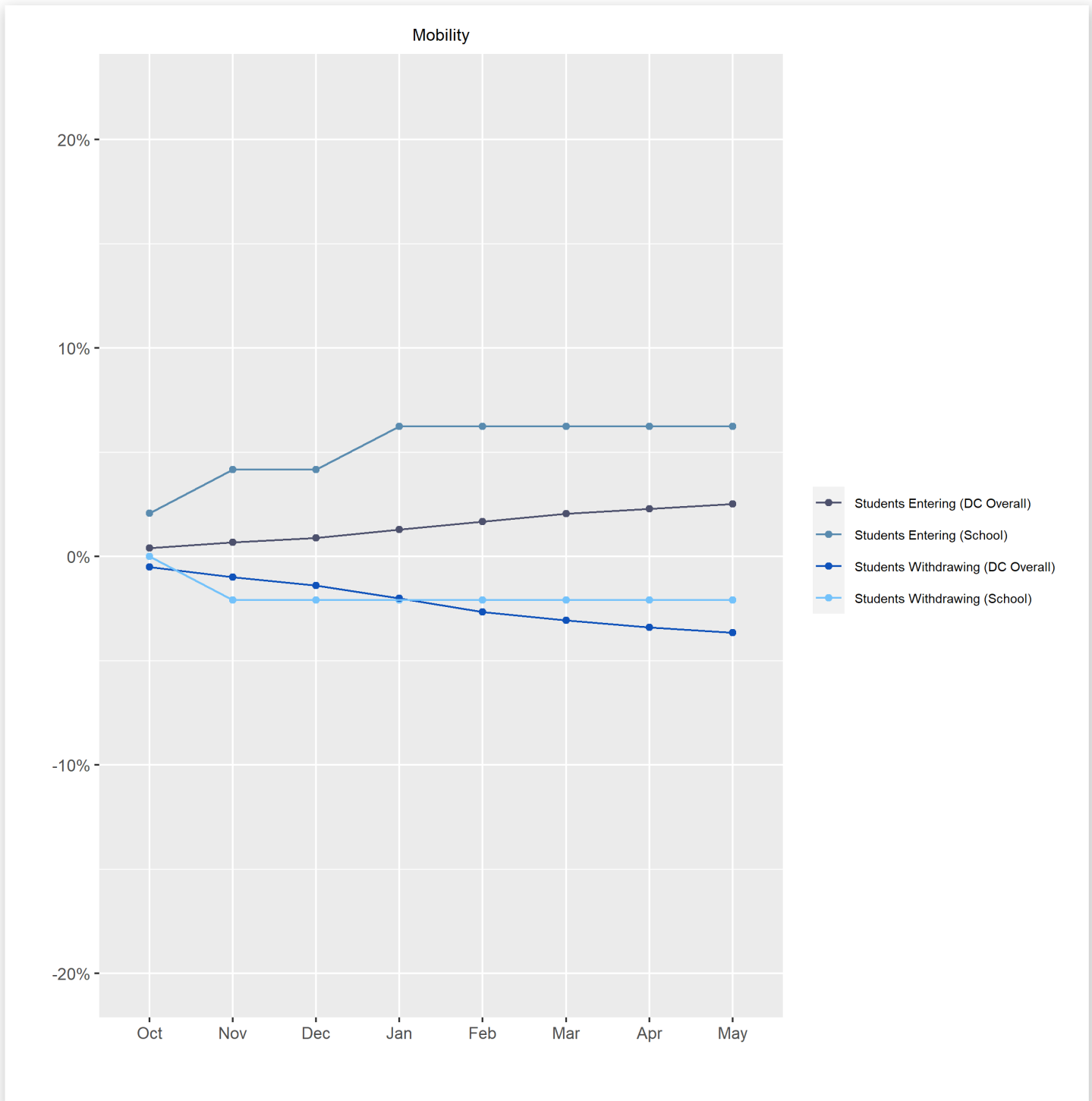
Attendance

Review information on attendance below, including in-seat attendance for all students (there is a separate measure of attendance for pre-K students, since pre-K is not compulsory), and the percentage of students chronically absent, meaning that they miss at least 10% of the school days for which they are enrolled throughout the school year at the school. Note: Due to variations in schools schedules, attendance data may have been collected differently by schools on synchronous and asynchronous learning days. As a result attendance data is unique to this school year and not necessarily comparable to prior years.



Student Enrollment Changes

Explore information on how much the population at the school changes throughout the year or from year to year. It shows information about changes in enrollment, including whether students leave or enter the school mid-year, and whether eligible students choose to re-enroll in the school.



Finance

Per-pupil expenditures represent the average amount of money spent on educating each student. In other words, this value represents the total amount of actual school expenditures divided by the number of students in the school.

2021 Per-pupil Expenditures

Per-pupil expenditure amount is calculated by dividing the total school expenditures by the October enrollment audit count of public school students.

Per-pupil: \$40,066

October Enrollment Audit Count: 48

Total School Expenditures: \$1,923,190

Total Excluded Expenditures: \$125,726

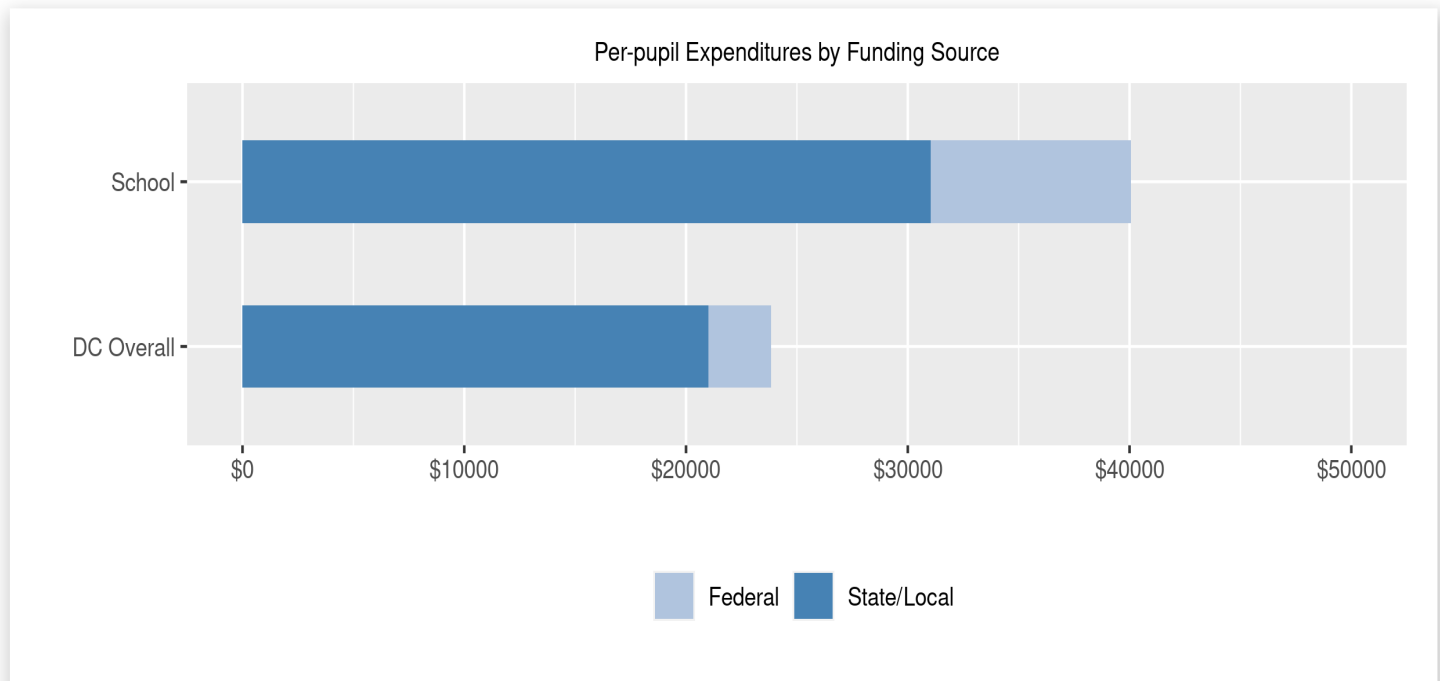
Excluded expenditures include: debt service, capital expenditures, construction and capital improvements, community service operations, and expenditures sourced from private funds (such as parent fees and corporate or charitable donations.) These are not included in the per-pupil expenditure calculation because they are considered outside of the day-to-day operation of the school.

2021 Total Expenditures \$2,048,916

The sum of total school and excluded expenditures is the total amount of money the LEA spent for the fiscal year.

Per-pupil Expenditures by Funding Source

Details are provided about the funding sources for per-pupil expenditures. State/local sources represent revenue received directly from DC, including local grants and per-pupil funding. Federal sources include federal revenue, such as Title I funds and IDEA funding. Per-pupil expenditures are displayed compared to the LEA and DC average.



	State/Local	Federal	Total
School	\$31,041 77.47%	\$9,025 22.53%	\$40,066
DC Overall	\$21,002 88.14%	\$2,827 11.86%	\$23,828