

Statesmen College Preparatory Academy for Boys PCS

Message from the School

Founded in 2018, Statesmen College Preparatory Academy for Boys is a boy-friendly academic environment within which young men are equipped with the academic skills, social competencies, and personal development necessary to navigate life challenges, attend and complete the college of their choice, and return to become the premier agents of social change within and for the communities they serve. We will serve grades 4 to 8 at capacity.



📍 4600 LIVINGSTON ROAD SE, Washington, DC 20032
🏠 Ward 8
📞 (202) 830-2810

School Instructional Hours

Monday: 08:30AM - 04:30PM
Tuesday: 08:30AM - 04:30PM
Wednesday: 08:30AM - 04:30PM
Thursday: 08:30AM - 04:30PM
Friday: 08:30AM - 01:00PM

Total Students (2020-21 Ever-Enrolled): 186

Total Teachers: 13

Total School Leaders: 3

Grades Served: 4, 5, 6, 7

Principal: Rictor Craig

Title-I Status: Yes

Local Education Agency (LEA): Statesmen College Preparatory Academy for Boys PCS

School Uniforms Required:

Yes

Bus Line(s): A6, A7, A8

Metro Line(s): Anacostia, Southern Ave

Before Care Offered: Yes

◦ **Cost:** Sliding Scale

After Care Offered: Yes

◦ **Cost:** Sliding Scale

School Program Information

Blended Learning
Extended Year
Interscholastic Sports

Parent Organization

Parent Organization Offered: Yes

Parent Organization Contact: Danielle Creek
(pac@statesmenboys.org)

Parent Organization Website:
pac@statesmenboys.org
(mailto:pac@statesmenboys.org)

Extracurricular & Enrichment Activities

Math and Literacy Intervention
Small Group Instruction National and International Student Travel

Statesmen College Preparatory Academy for Boys PCS

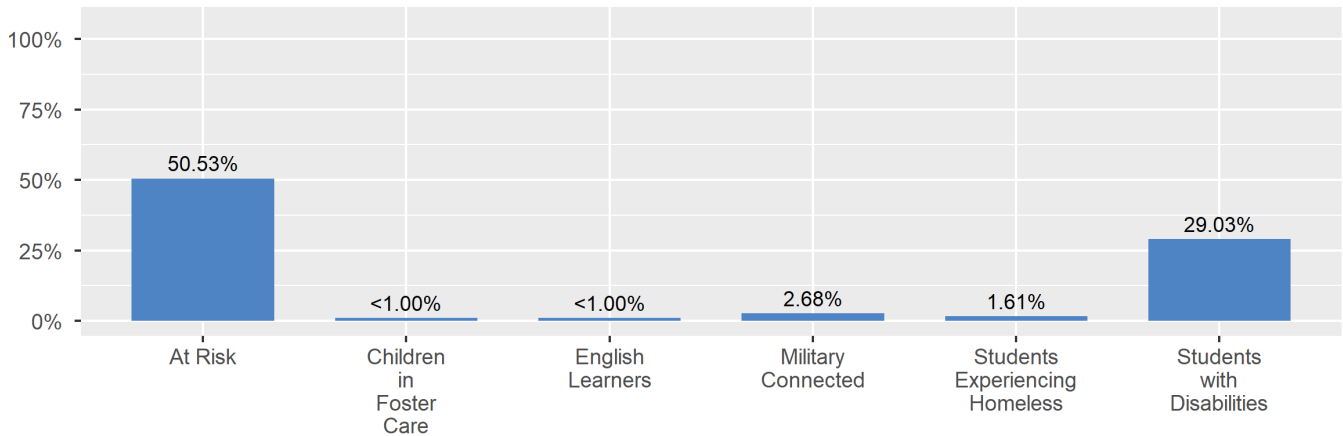
School Enrollment

The ever-enrolled count is the total number of students who are enrolled at any point during the school year; a student who attends a school for one day or 180 days is counted the same way. For this reason, the ever-enrolled count will always be larger than the audit count.

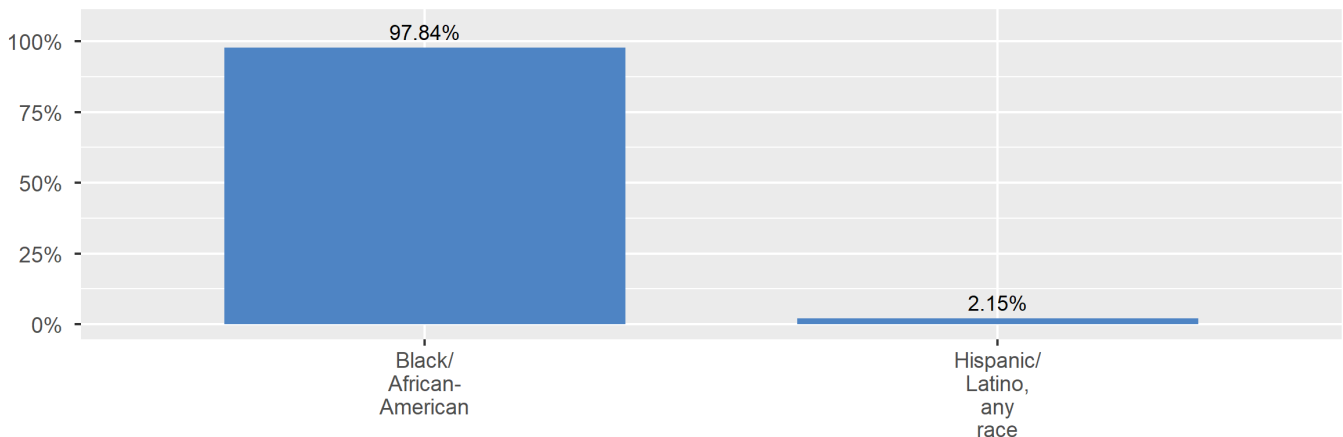
2020-21 Ever-Enrolled by
Grade Level

Grade 04	Grade 05	Grade 06
36	72	78

Enrollment by Student Group



Enrollment by Race/Ethnicity

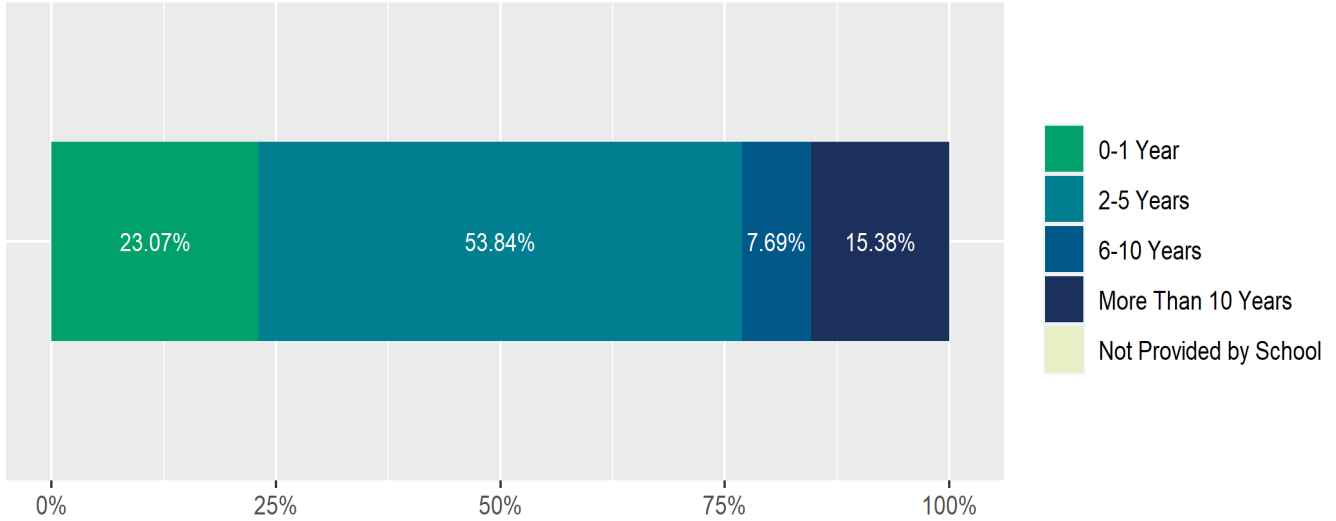


Statesmen College Preparatory Academy for Boys PCS

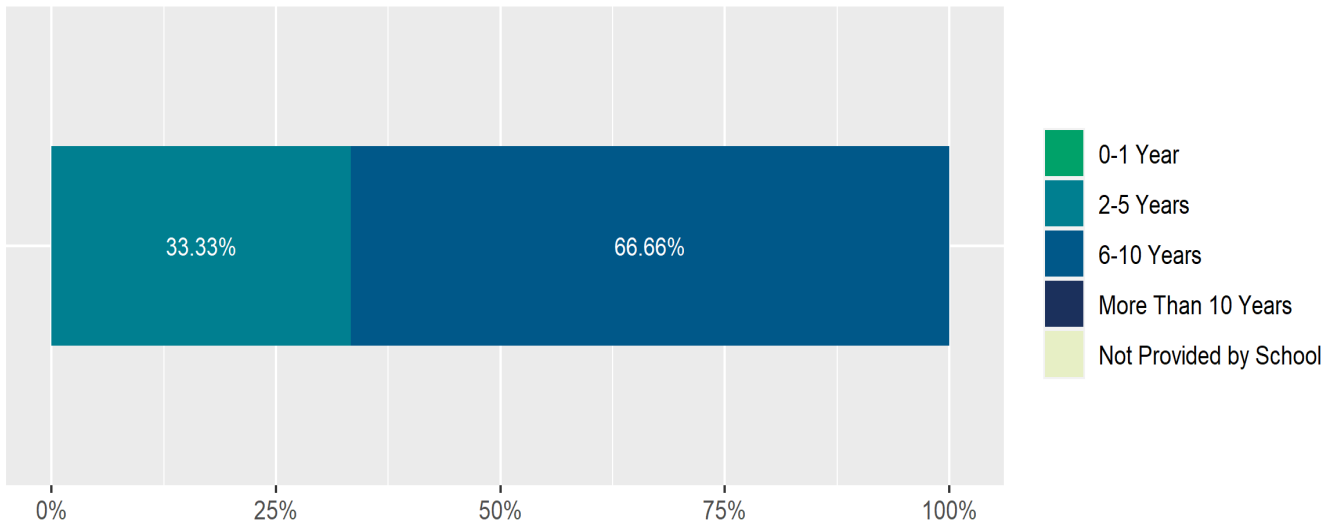
Teacher and School Leader Data

This page includes information about teacher experience levels in DC Public Schools and public charter schools. For DC Public Schools, it also includes information about credentialed and in-field teachers.

Teacher - Years of Experience



School Leader - Years of Experience



School Safety and Discipline

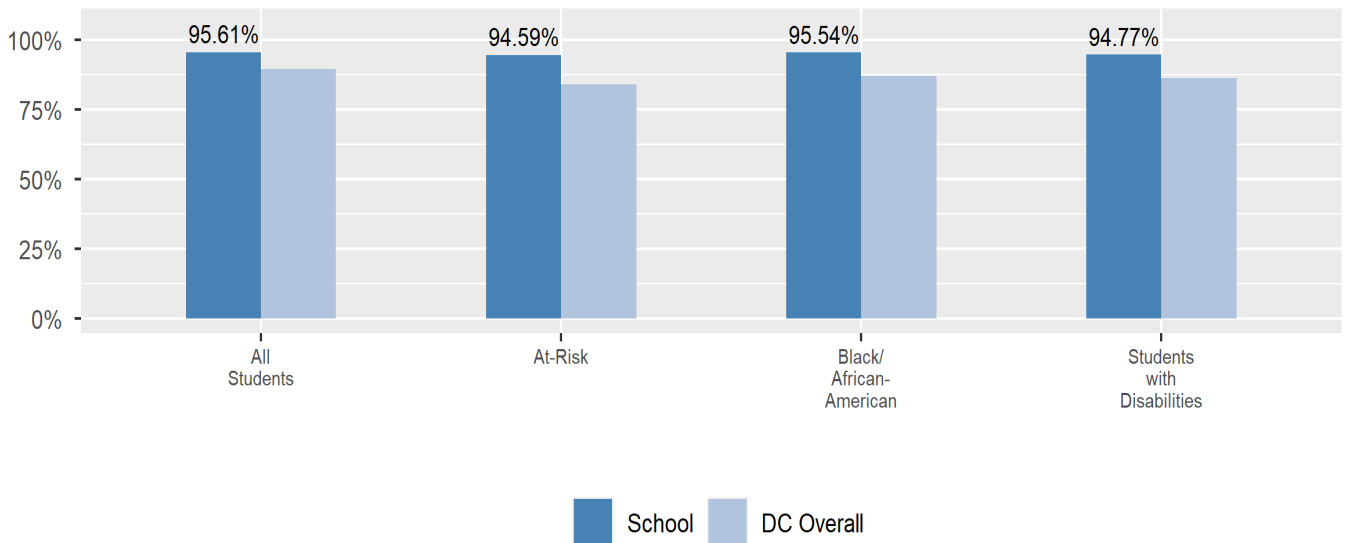
Information about discipline and school safety in DC, in accordance with the U.S. Department of Education's Civil Rights Data collection, including suspensions and expulsions for students, school related arrests, reported incidents of violence, bullying, and harassment are available in the OSSE Discipline report and data files (<https://osse.dc.gov/page/data-and-reports-0>).

Statesmen College Preparatory Academy for Boys PCS

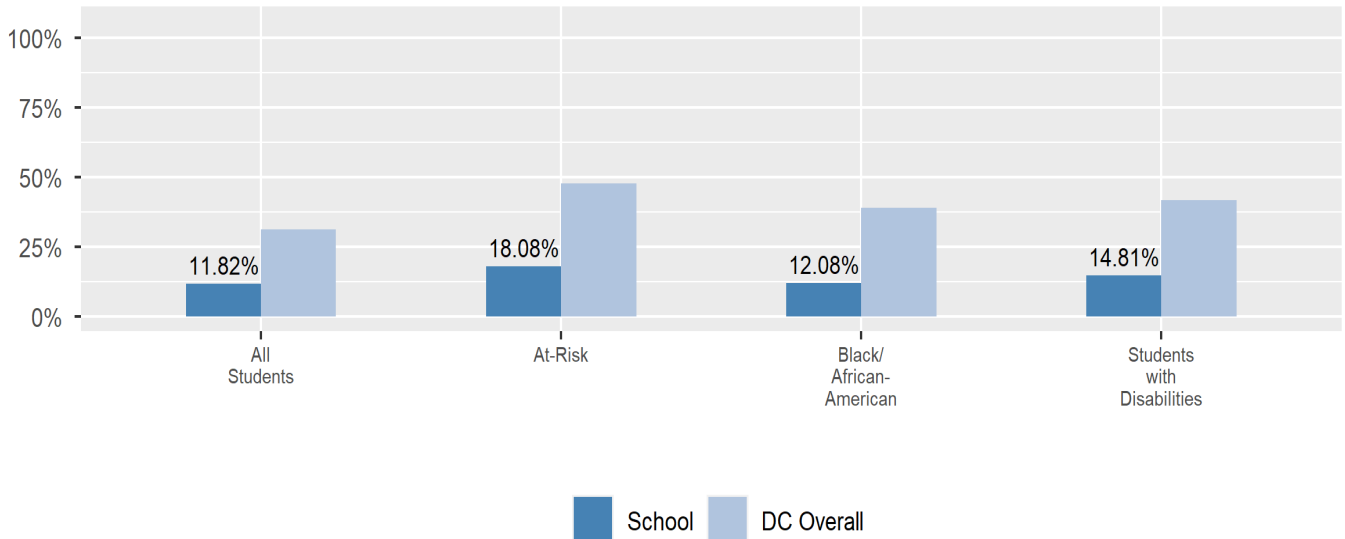
Attendance

Review information on attendance below, including in-seat attendance for all students (there is a separate measure of attendance for pre-K students, since pre-K is not compulsory), and the percentage of students chronically absent, meaning that they miss at least 10% of the school days for which they are enrolled throughout the school year at the school. Note: Due to variations in schools schedules, attendance data may have been collected differently by schools on synchronous and asynchronous learning days. As a result attendance data is unique to this school year and not necessarily comparable to prior years.

In-Seat Attendance



Chronic Absenteeism

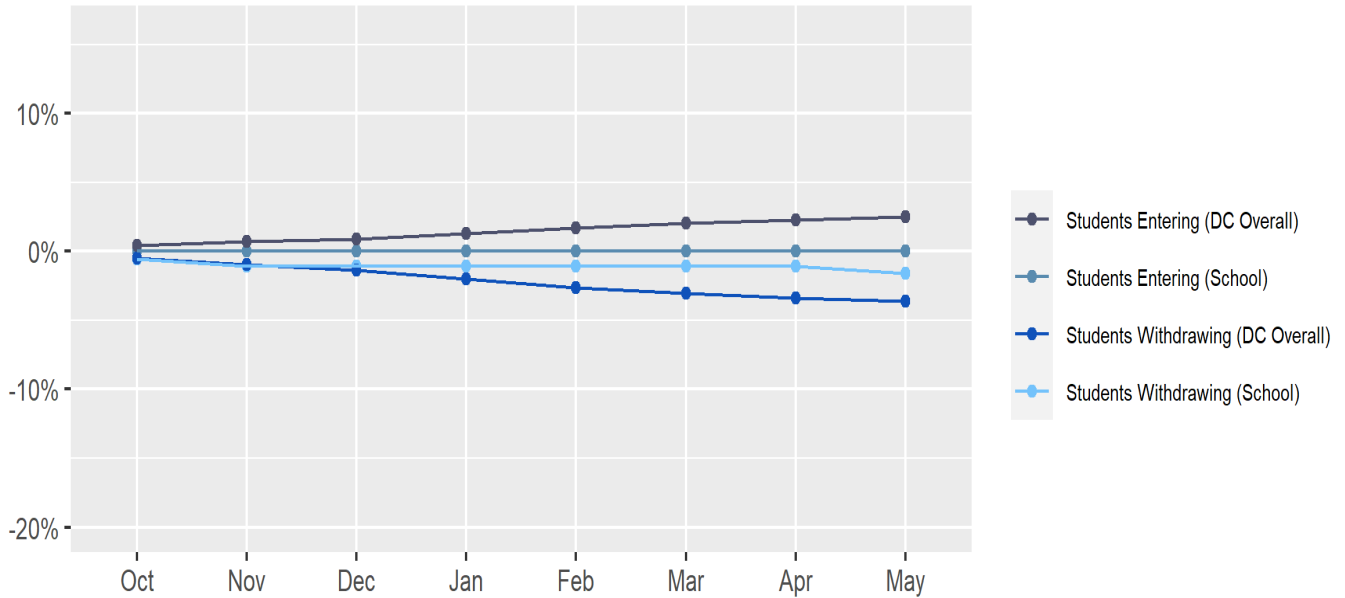


Statesmen College Preparatory Academy for Boys PCS

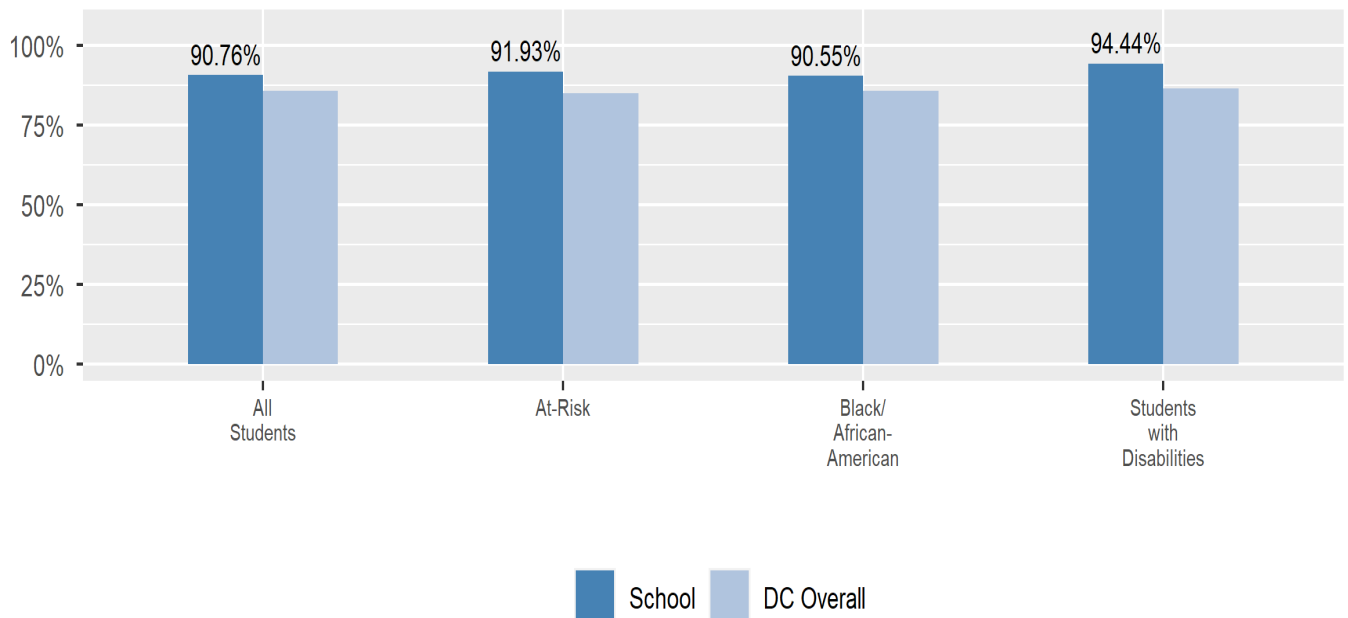
Student Enrollment Changes

Explore information on how much the population at the school changes throughout the year or from year to year. It shows information about changes in enrollment, including whether students leave or enter the school mid-year, and whether eligible students choose to re-enroll in the school.

Mobility



Re-Enrollment



Statesmen College Preparatory Academy for Boys PCS

Finance

Per-pupil expenditures represent the average amount of money spent on educating each student. In other words, this value represents the total amount of actual school expenditures divided by the number of students in the school.

2021 Per-pupil Expenditures

Per-pupil expenditure amount is calculated by dividing the total school expenditures by the October enrollment audit count of public school students.

Per-pupil: \$21,010

October Enrollment Audit Count: 185

Total School Expenditures: \$3,886,890

Total Excluded Expenditures: \$630,203

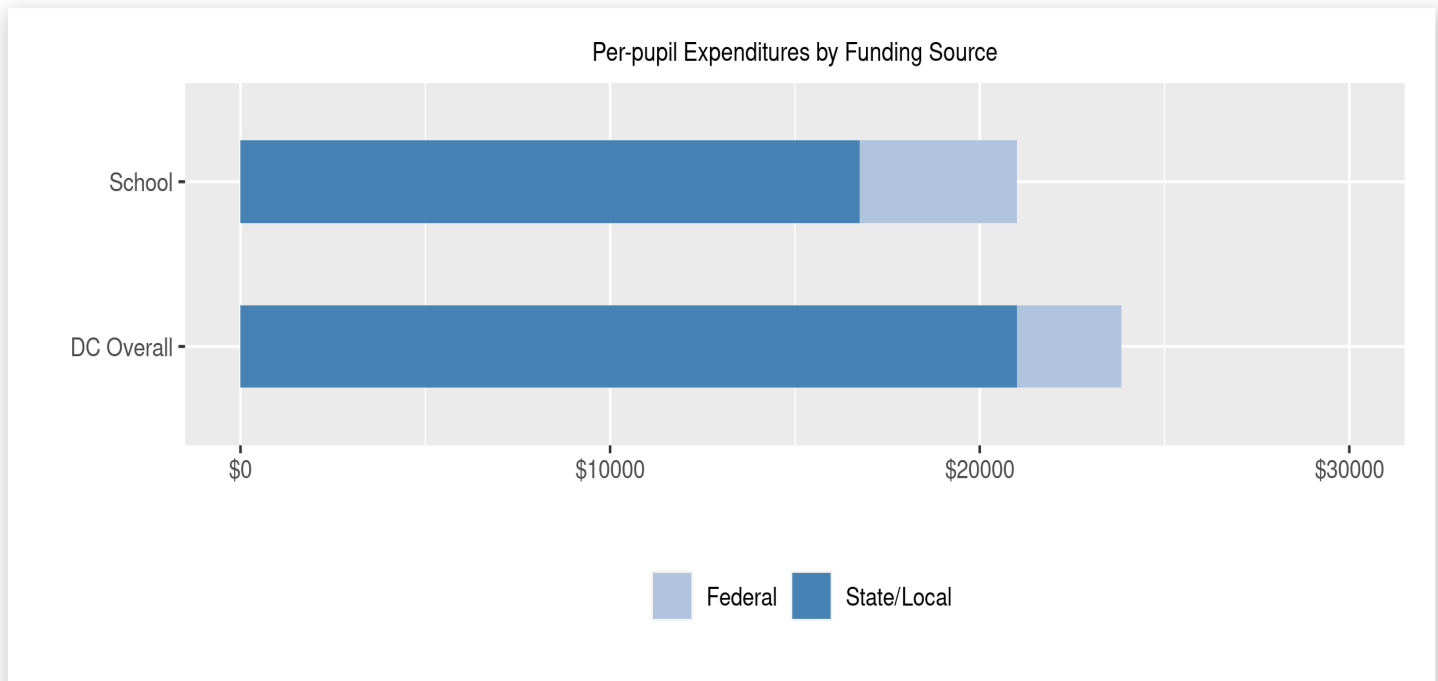
Excluded expenditures include: debt service, capital expenditures, construction and capital improvements, community service operations, and expenditures sourced from private funds (such as parent fees and corporate or charitable donations.) These are not included in the per-pupil expenditure calculation because they are considered outside of the day-to-day operation of the school.

2021 Total Expenditures \$4,517,093

The sum of total school and excluded expenditures is the total amount of money the LEA spent for the fiscal year.

Per-pupil Expenditures by Funding Source

Details are provided about the funding sources for per-pupil expenditures. State/local sources represent revenue received directly from DC, including local grants and per-pupil funding. Federal sources include federal revenue, such as Title I funds and IDEA funding. Per-pupil expenditures are displayed compared to the LEA and DC average.



	State/Local	Federal	Total
School	\$16,747 79.71%	\$4,263 20.29%	\$21,010
DC Overall	\$21,002 88.14%	\$2,827 11.86%	\$23,828