

## Message from the School

The Goodwill Excel Center is a unique, tuition-free adult charter high school that awards industry recognized certifications and high school diplomas, not GEDs, to adult learners in the District. The first of its kind in the District, the Excel Center responds to the fact that life commitments, and circumstances can often stop people from continuing their high school education. GEC offers access to transportation assistance and child care.

**The Excel  
Center**



📍 1776 G STREET NW, Washington, DC 20006

🏠 Ward 2

☎ (202) 839-3650

## School Instructional Hours

**Monday:** 09:00AM - 05:00PM  
**Tuesday:** 09:00AM - 05:00PM  
**Wednesday:** 09:00AM - 05:00PM  
**Thursday:** 09:00AM - 05:00PM  
**Friday:** Missing

**Total Students (2020-21 Ever-Enrolled):** 667

**Total Teachers:** 18

**Total School Leaders:** 1

**Grades Served:** 9, 10, 11, 12

**Principal:** Chelsea Kirk

**Title-I Status:** No

**Local Education Agency (LEA):** Goodwill Excel Center PCS

**School Uniforms Required:** No

**Bus Line(s):** 80

**Metro Line(s):** Farragut North and West Station

**Before Care Offered:** No

**After Care Offered:** No

## School Program Information

Career and Technical Education  
 Dual College Enrollment  
 Online learning

## Parent Organization

**Parent Organization Offered:** No

## Extracurricular & Enrichment Activities

Gentlemen of GEC  
 Sisters Investing In Sisters  
 Student Ambassadors

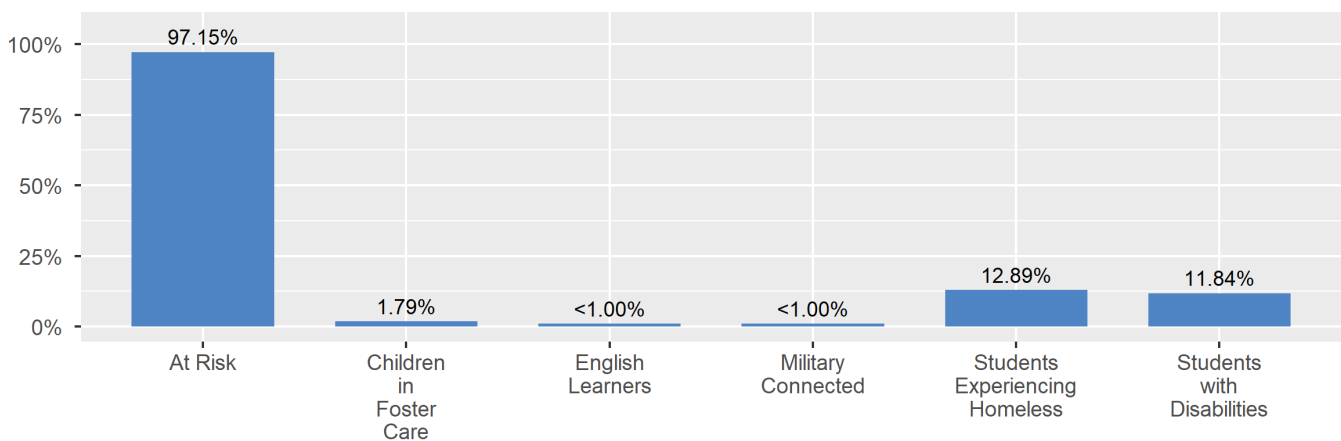
## School Enrollment

The ever-enrolled count is the total number of students who are enrolled at any point during the school year; a student who attends a school for one day or 180 days is counted the same way. For this reason, the ever-enrolled count will always be larger than the audit count.

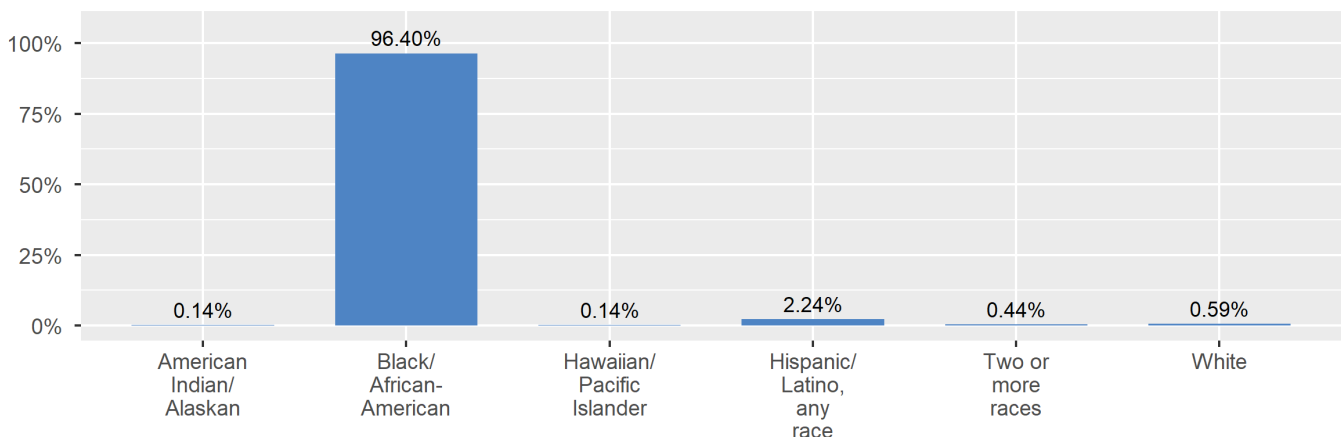
2020-21 Ever-  
Enrolled by Grade  
Level

Grade 09	Grade 12
637	30

Enrollment by Student Group



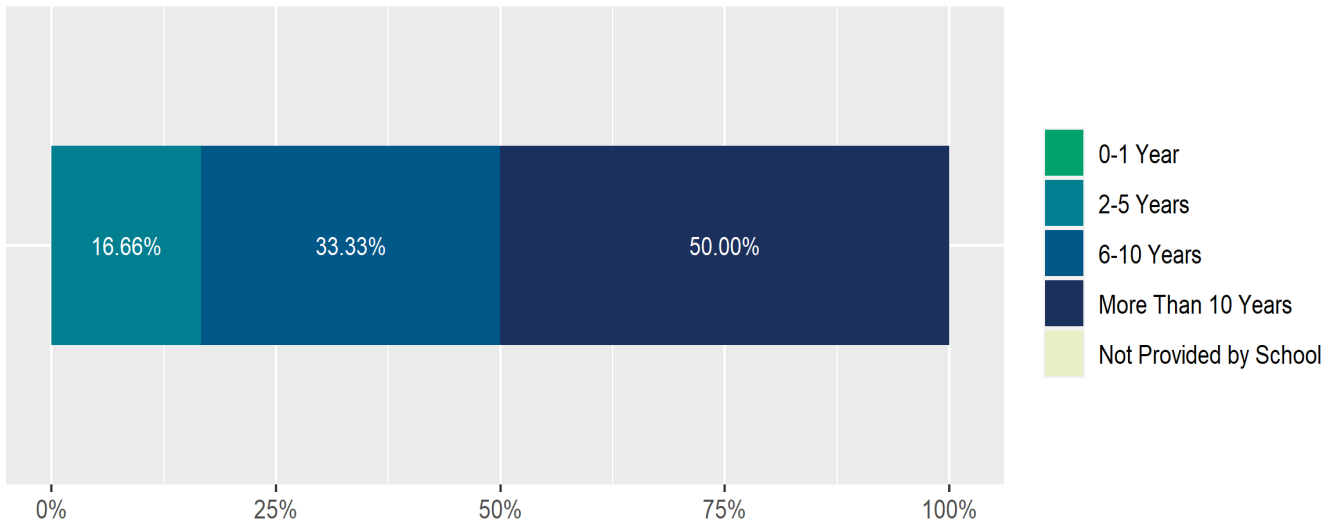
Enrollment by Race/Ethnicity



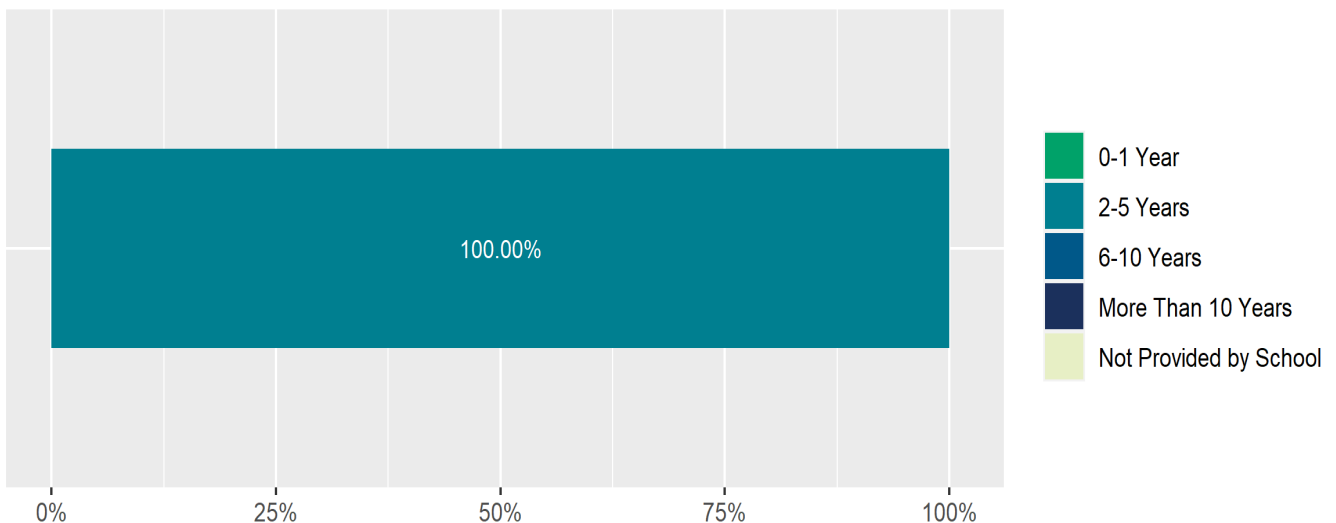
## Teacher and School Leader Data

This page includes information about teacher experience levels in DC Public Schools and public charter schools. For DC Public Schools, it also includes information about credentialed and in-field teachers.

Teacher - Years of Experience



School Leader - Years of Experience



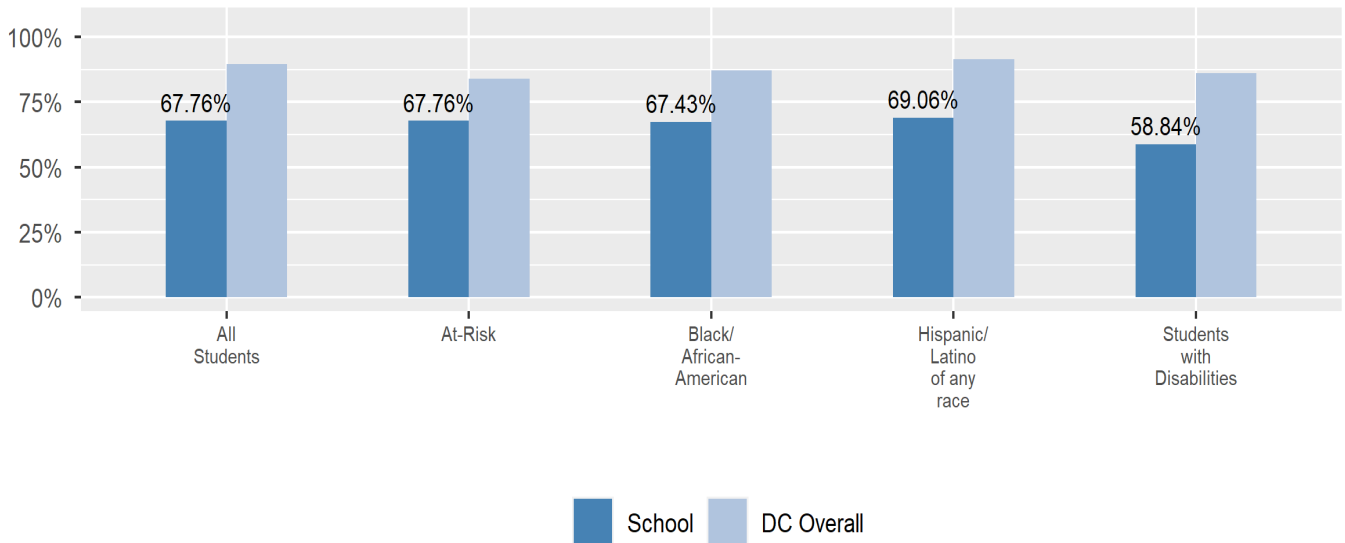
## School Safety and Discipline

Information about discipline and school safety in DC, in accordance with the U.S. Department of Education's Civil Rights Data collection, including suspensions and expulsions for students, school related arrests, reported incidents of violence, bullying, and harassment are available in the OSSE Discipline report and data files (<https://osse.dc.gov/page/data-and-reports-0>).

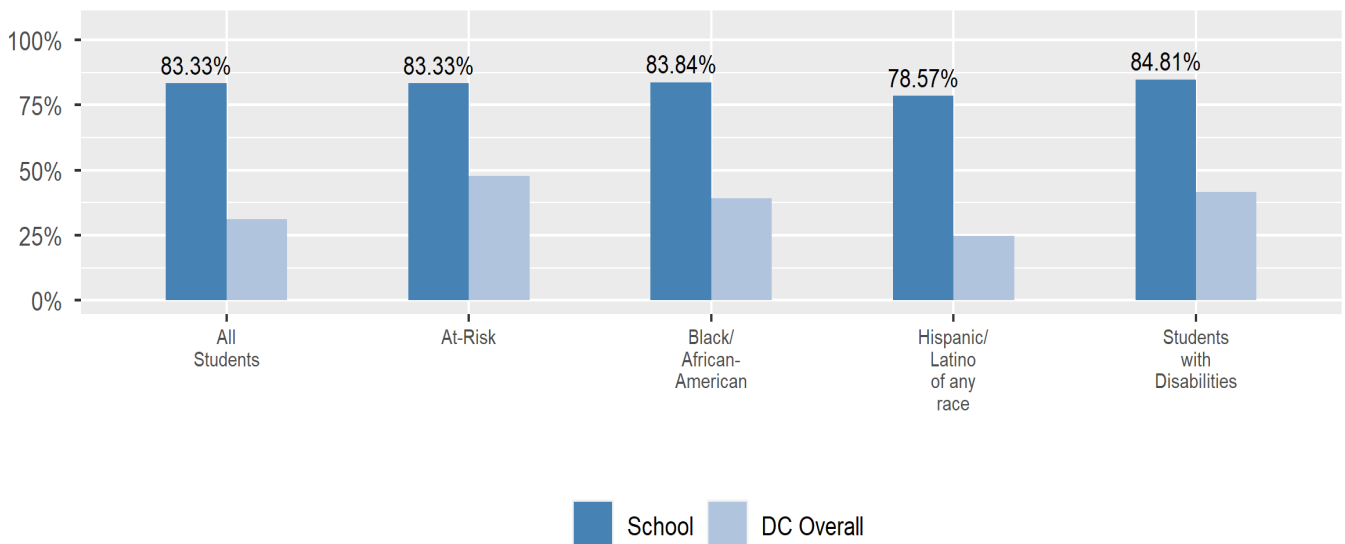
## Attendance

Review information on attendance below, including in-seat attendance for all students (there is a separate measure of attendance for pre-K students, since pre-K is not compulsory), and the percentage of students chronically absent, meaning that they miss at least 10% of the school days for which they are enrolled throughout the school year at the school. Note: Due to variations in schools schedules, attendance data may have been collected differently by schools on synchronous and asynchronous learning days. As a result attendance data is unique to this school year and not necessarily comparable to prior years.

In-Seat Attendance



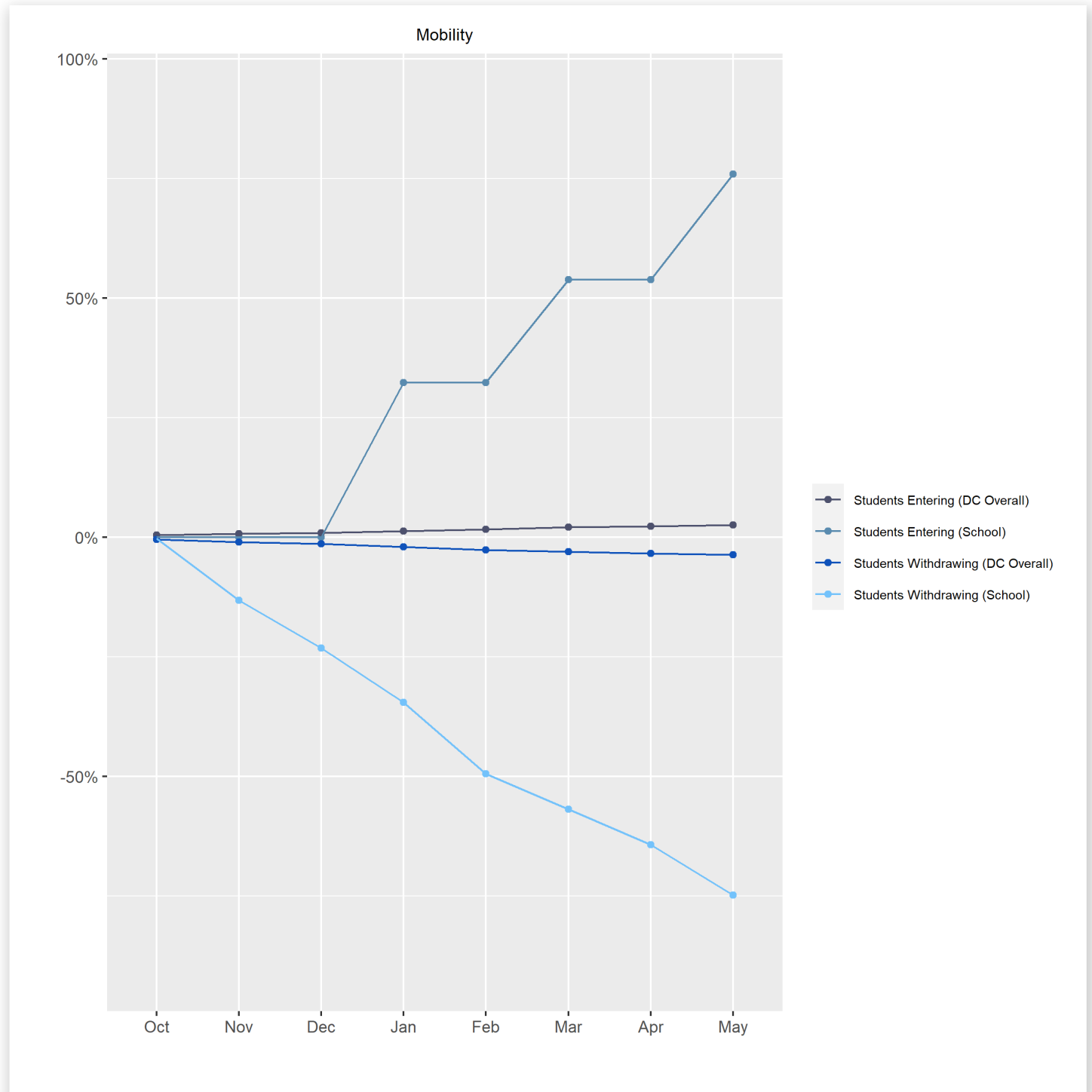
Chronic Absenteeism





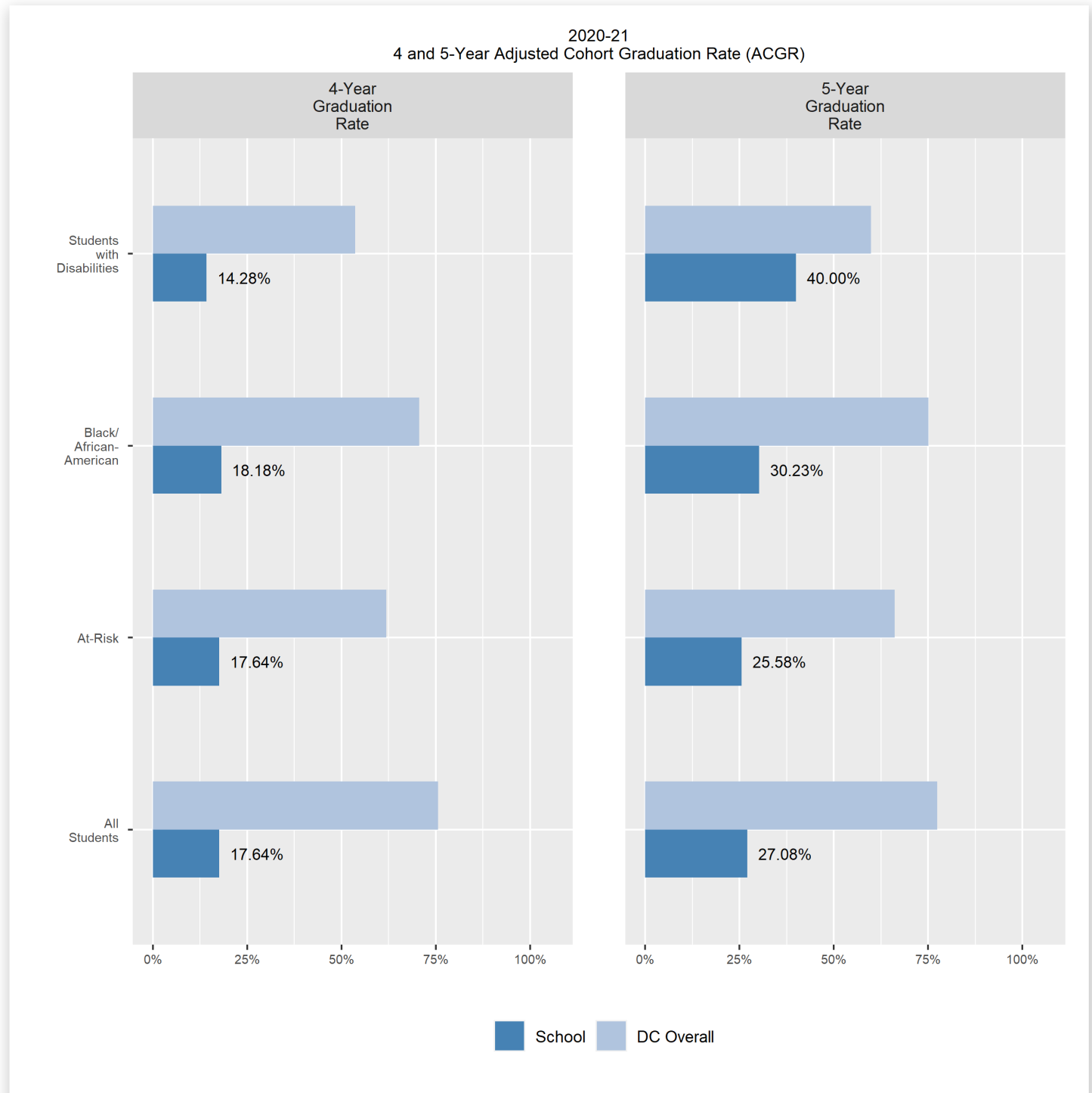
## Student Enrollment Changes

Explore information on how much the population at the school changes throughout the year or from year to year. It shows information about changes in enrollment, including whether students leave or enter the school mid-year, and whether eligible students choose to re-enroll in the school.



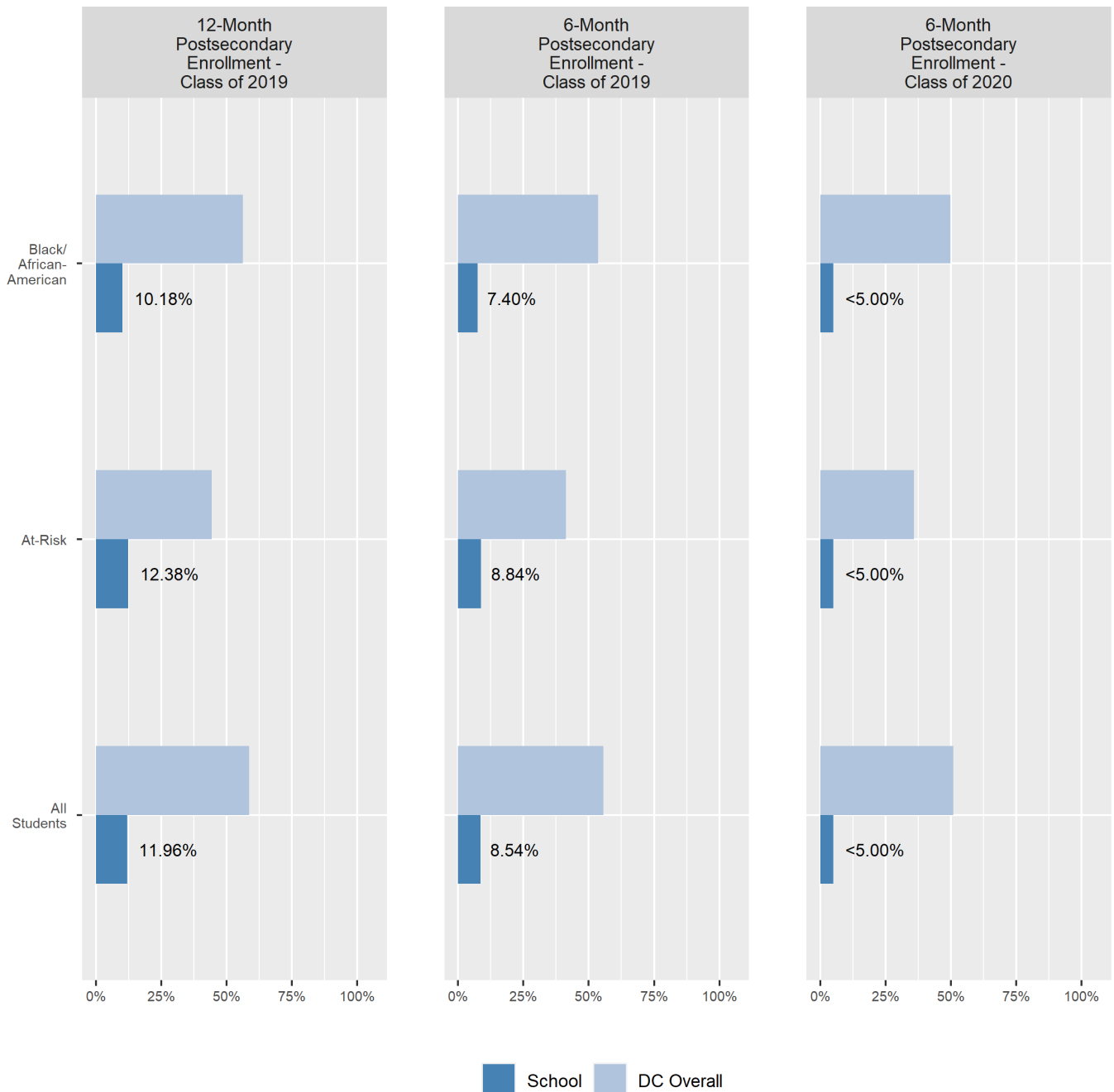
## Graduation Rates

This page includes two high school graduation measures: The percentage of students in the school who graduate in 4 years and the percentage of students in the school who graduate in 5 years.



## College Enrollment Rates

The percentage of high school graduates from the class of 2019 and 2020 who enrolled in a post-secondary degree-granting institution within 6 months and within 12 months following graduation.



## Finance

Per-pupil expenditures represent the average amount of money spent on educating each student. In other words, this value represents the total amount of actual school expenditures divided by the number of students in the school.

### 2021 Per-pupil Expenditures

Per-pupil expenditure amount is calculated by dividing the total school expenditures by the October enrollment audit count of public school students.

**Per-pupil: \$17,325**

**October Enrollment Audit Count: 362**

**Total School Expenditures: \$6,271,607**

**Total Excluded Expenditures: \$0**

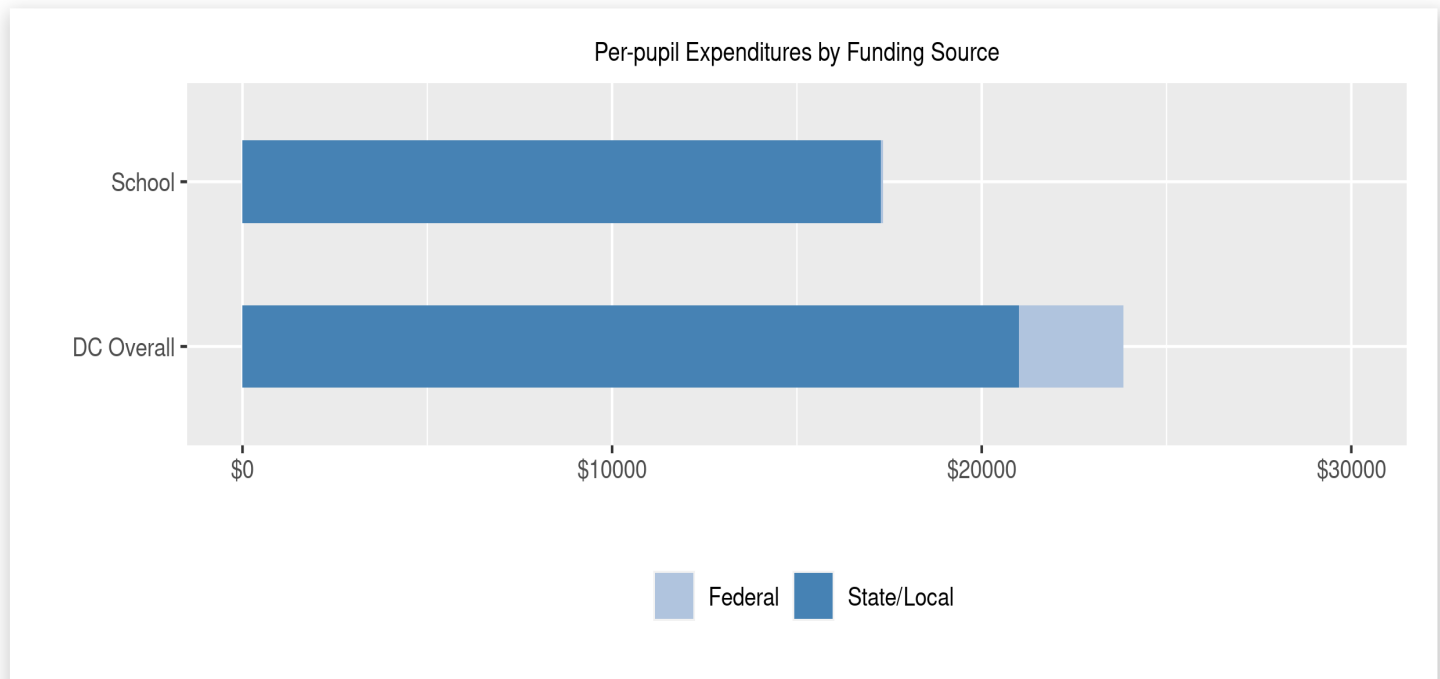
Excluded expenditures include: debt service, capital expenditures, construction and capital improvements, community service operations, and expenditures sourced from private funds (such as parent fees and corporate or charitable donations.) These are not included in the per-pupil expenditure calculation because they are considered outside of the day-to-day operation of the school.

**2021 Total Expenditures \$6,271,607**

The sum of total school and excluded expenditures is the total amount of money the LEA spent for the fiscal year.

### Per-pupil Expenditures by Funding Source

Details are provided about the funding sources for per-pupil expenditures. State/local sources represent revenue received directly from DC, including local grants and per-pupil funding. Federal sources include federal revenue, such as Title I funds and IDEA funding. Per-pupil expenditures are displayed compared to the LEA and DC average.



	State/Local	Federal	Total
School	\$17,266 99.66%	\$59 0.34%	\$17,325
DC Overall	\$21,002 88.14%	\$2,827 11.86%	\$23,828