

Message from the School

Kingsman Academy serves students in grades 6 through 12 in a personalized competency-based academic program that emphasizes a therapeutic approach to project-based learning. Kingsman Academy welcomes all students.



1375 E STREET NE, Washington, DC 20002
 Ward 6
 (202) 547-1028

School Instructional Hours

Monday: 08:30AM - 03:30PM
Tuesday: 08:30AM - 03:30PM
Wednesday: 08:30AM - 03:30PM
Thursday: 08:00AM - 03:30PM
Friday: 08:30AM - 03:30PM

Total Students (2021-22 Ever-Enrolled): 278

Total Teachers: 14

Total School Leaders: 6

Grades Served: 6, 7, 8, 9, 10, 11, 12

Principal: Kennesha Kelly

Title-I Status: Yes

Local Education Agency (LEA): Kingsman Academy PCS

School Uniforms Required: No

Bus Line(s): B2, D6, X1, X8

Metro Line(s): Not Provided

Before Care Offered: No

After Care Offered: No

School Program Information

Online learning

Parent Organization

**Parent Organization
Offered:** No

Extracurricular & Enrichment Activities

College and career readiness classes
 Athlete development program

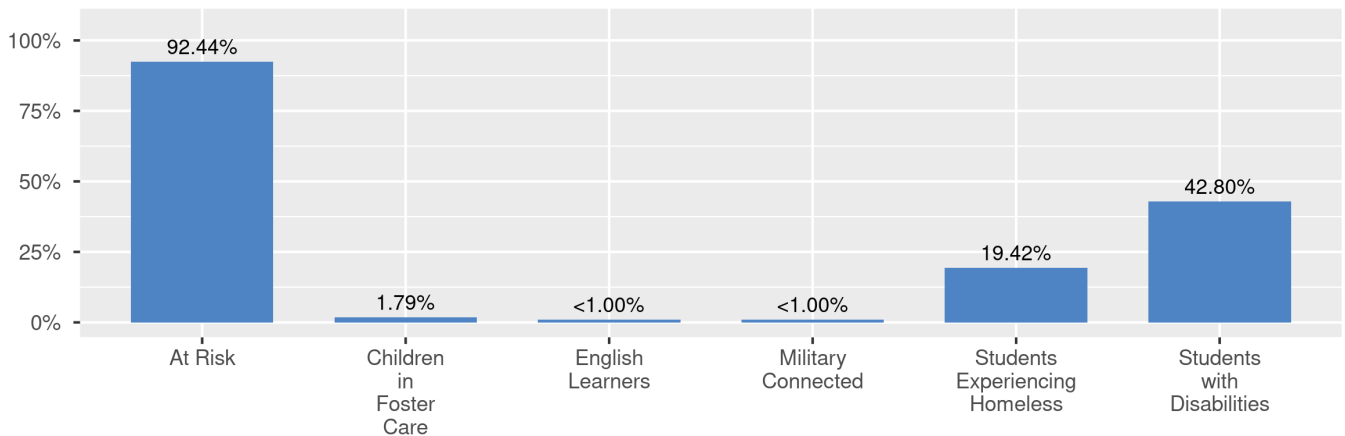
School Enrollment

The ever-enrolled count is the total number of students who are enrolled at any point during the school year; a student who attends a school for one day or 180 days is counted the same way. For this reason, the ever-enrolled count will always be larger than the audit count.

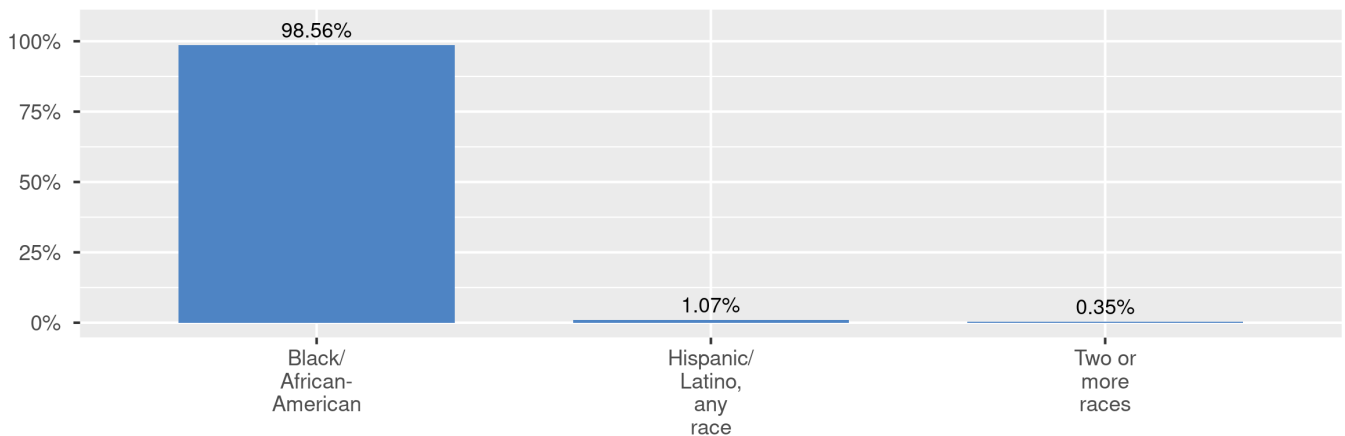
2020-21 Ever-Enrolled by Grade Level

| Grade 06 | Grade 07 | Grade 08 | Grade 09 | Grade 10 | Grade 11 | Grade 12 |
|----------|----------|----------|----------|----------|----------|----------|
| 14 | 13 | 23 | 31 | 73 | 89 | 35 |

Enrollment by Student Group



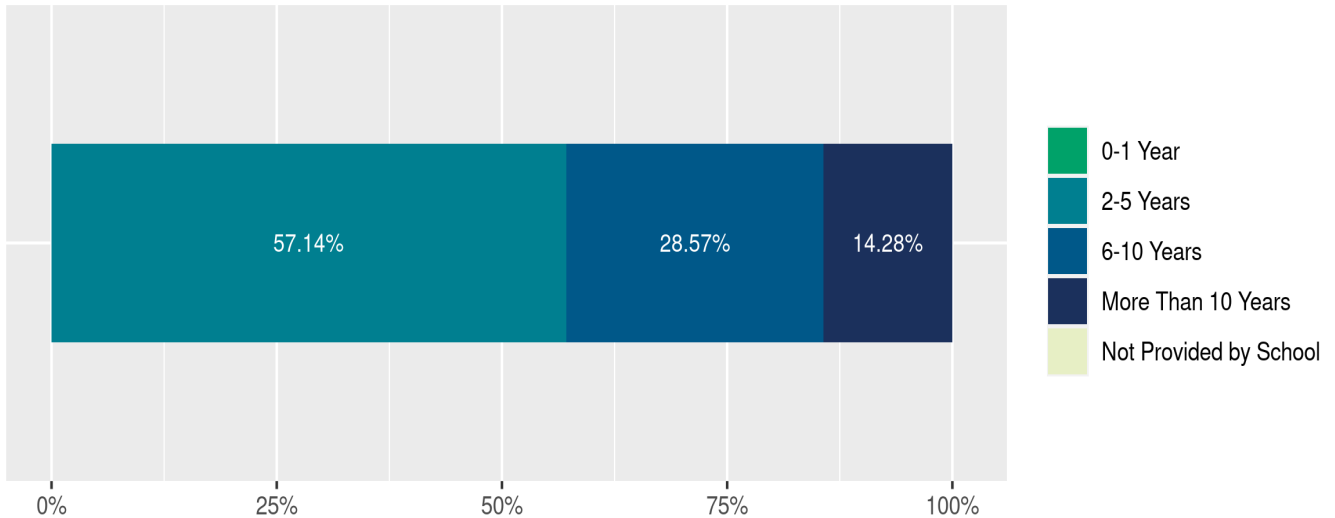
Enrollment by Race/Ethnicity



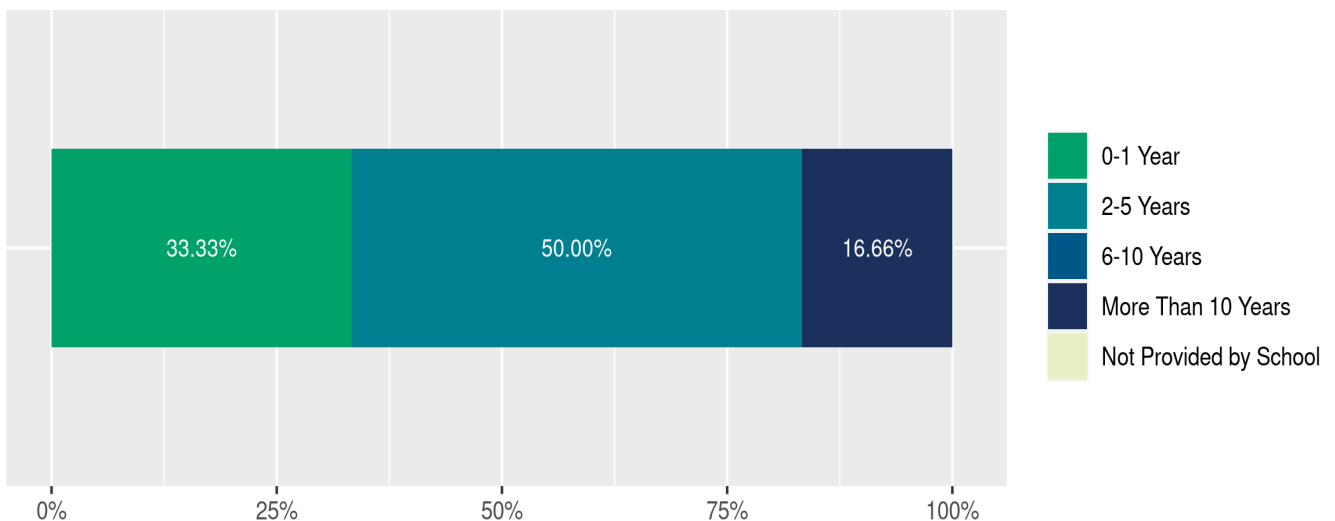
Teacher and School Leader Data

This page includes information about teacher experience levels in DC Public Schools and public charter schools. For DC Public Schools, it also includes information about credentialed and in-field teachers.

Teacher - Years of Experience



School Leader - Years of Experience



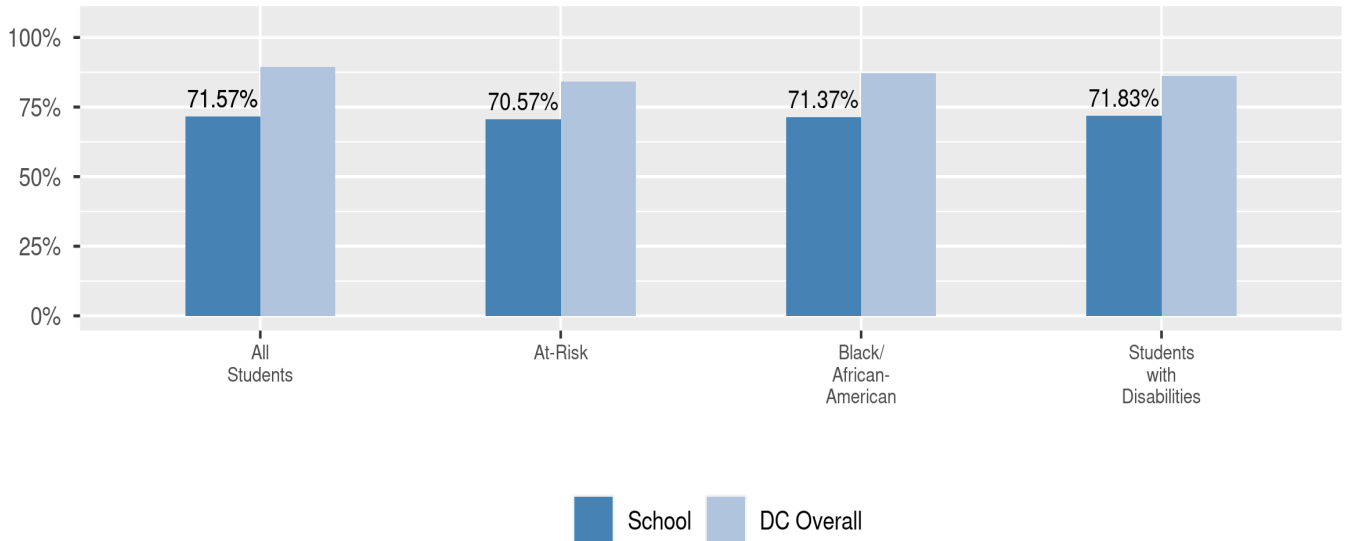
School Safety and Discipline

Information about discipline and school safety in DC, in accordance with the U.S. Department of Education's Civil Rights Data collection, including suspensions and expulsions for students, school related arrests, reported incidents of violence, bullying, and harassment are available in the OSSE Discipline report and data files (<https://osse.dc.gov/page/data-and-reports-0>).

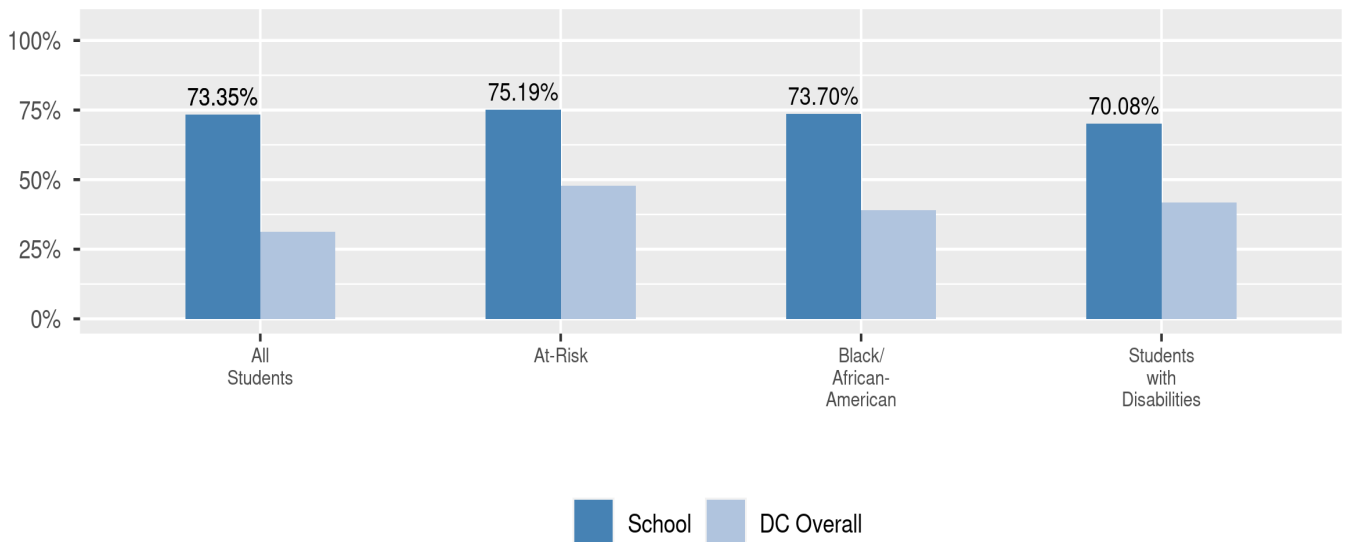
Attendance

Review information on attendance below, including in-seat attendance for all students (there is a separate measure of attendance for pre-K students, since pre-K is not compulsory), and the percentage of students chronically absent, meaning that they miss at least 10% of the school days for which they are enrolled throughout the school year at the school. Note: Due to variations in schools schedules, attendance data may have been collected differently by schools on synchronous and asynchronous learning days. As a result attendance data is unique to this school year and not necessarily comparable to prior years.

In-Seat Attendance

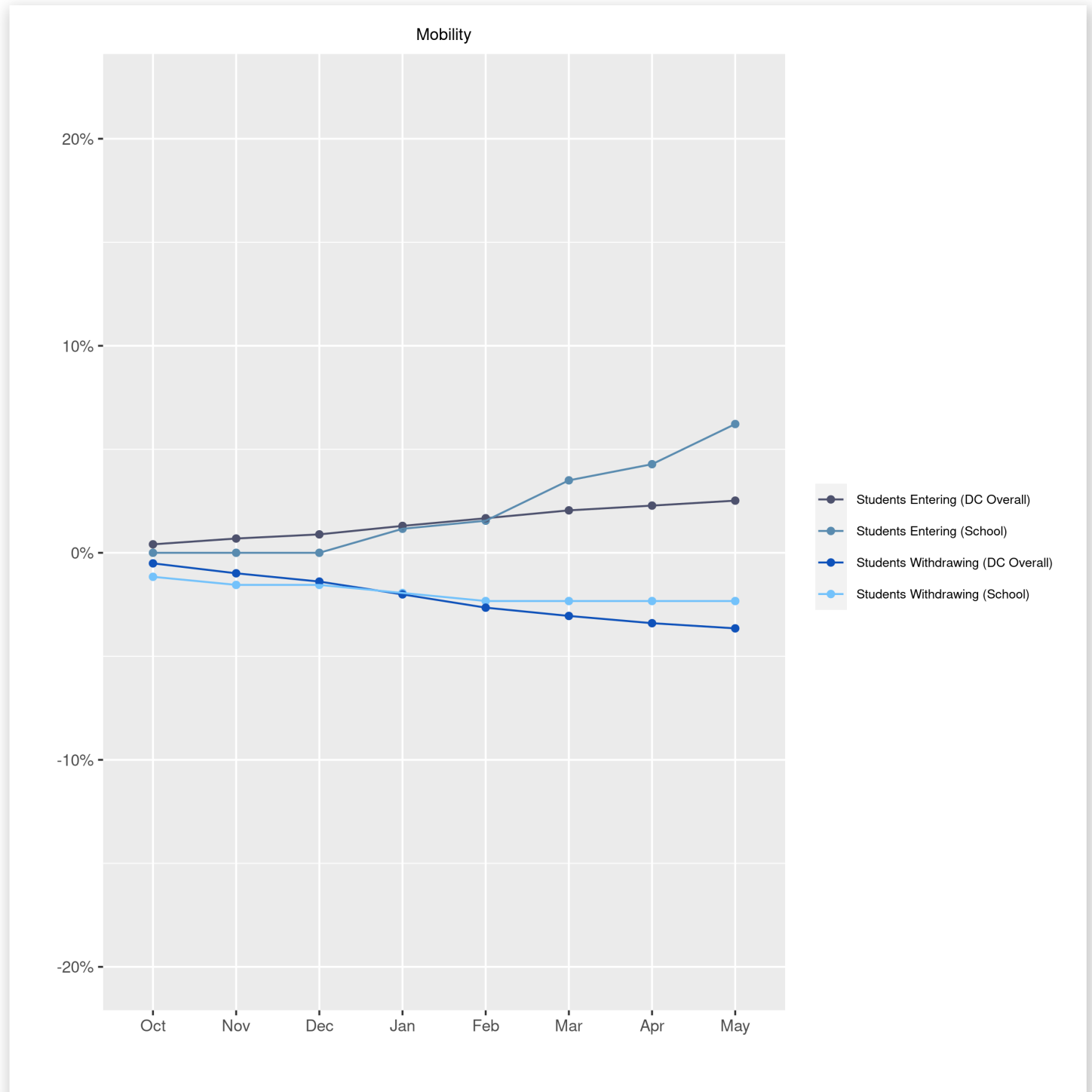


Chronic Absenteeism



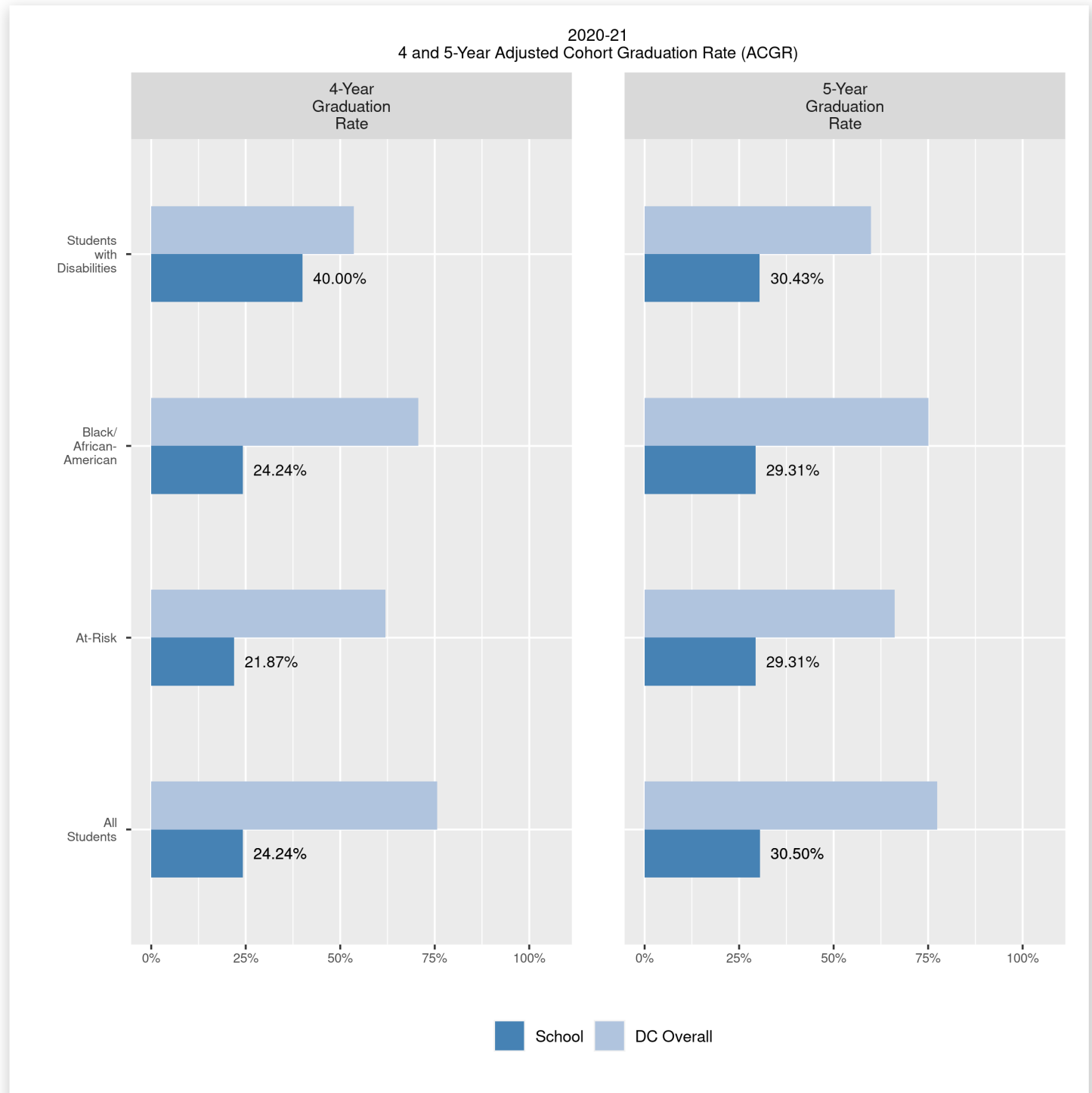
Student Enrollment Changes

Explore information on how much the population at the school changes throughout the year or from year to year. It shows information about changes in enrollment, including whether students leave or enter the school mid-year, and whether eligible students choose to re-enroll in the school.



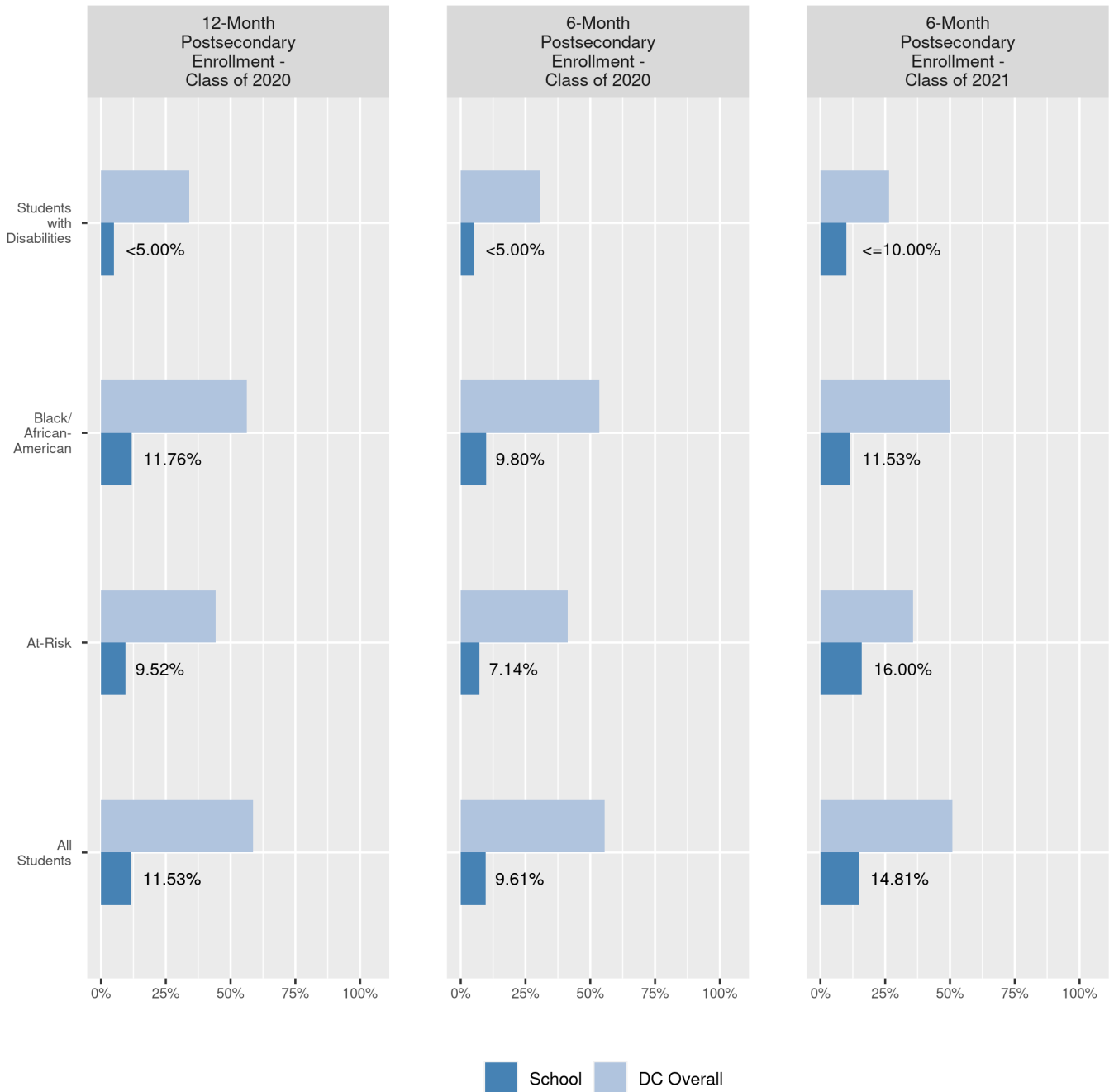
Graduation Rates

This page includes two high school graduation measures: The percentage of students in the school who graduate in 4 years and the percentage of students in the school who graduate in 5 years.



College Enrollment Rates

The percentage of high school graduates from the class of 2019 and 2020 who enrolled in a post-secondary degree-granting institution within 6 months and within 12 months following graduation.



Finance

Per-pupil expenditures represent the average amount of money spent on educating each student. In other words, this value represents the total amount of actual school expenditures divided by the number of students in the school.

2021 Per-pupil Expenditures

Per-pupil expenditure amount is calculated by dividing the total school expenditures by the October enrollment audit count of public school students.

Per-pupil: \$23,628

October Enrollment Audit Count: 258

Total School Expenditures: \$6,096,037

Total Excluded Expenditures: \$1,358,669

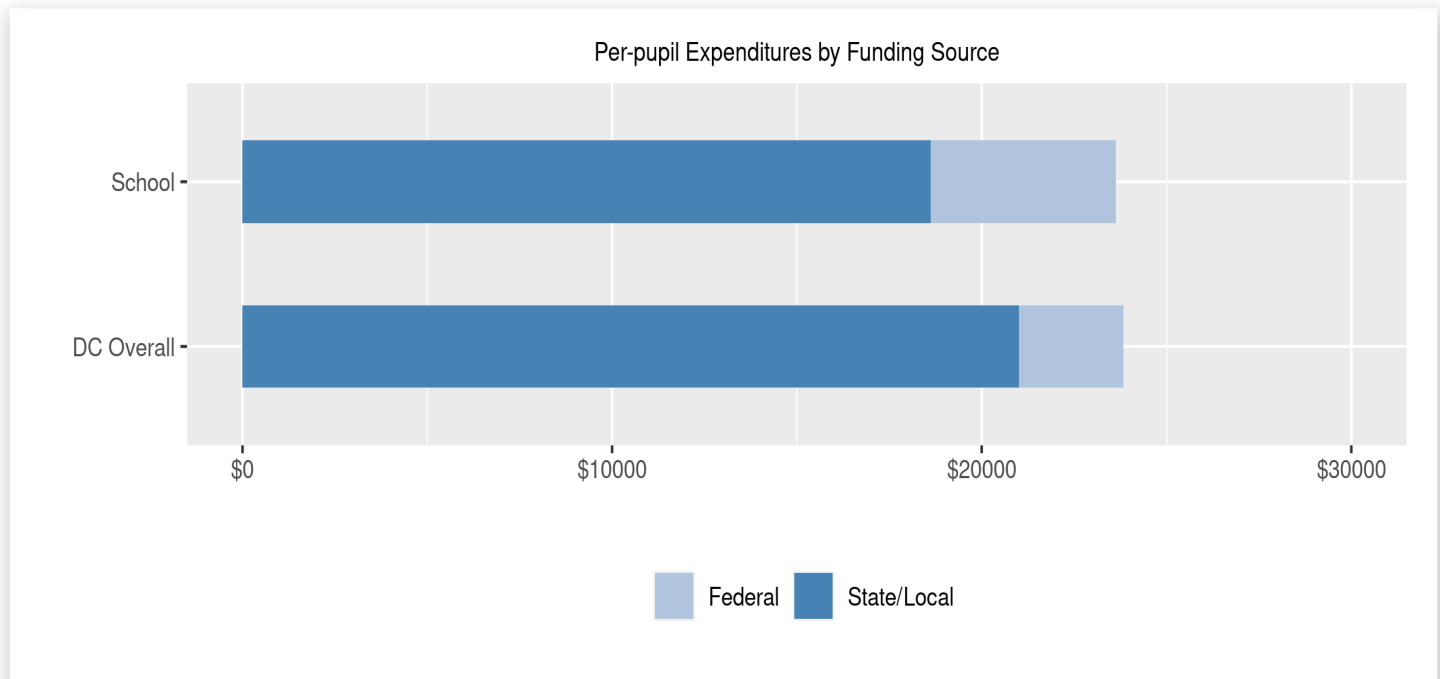
Excluded expenditures include: debt service, capital expenditures, construction and capital improvements, community service operations, and expenditures sourced from private funds (such as parent fees and corporate or charitable donations.) These are not included in the per-pupil expenditure calculation because they are considered outside of the day-to-day operation of the school.

2021 Total Expenditures \$7,454,706

The sum of total school and excluded expenditures is the total amount of money the LEA spent for the fiscal year.

Per-pupil Expenditures by Funding Source

Details are provided about the funding sources for per-pupil expenditures. State/local sources represent revenue received directly from DC, including local grants and per-pupil funding. Federal sources include federal revenue, such as Title I funds and IDEA funding. Per-pupil expenditures are displayed compared to the LEA and DC average.



| | State/Local | Federal | Total |
|------------|-----------------|----------------|----------|
| School | \$18,623 78.82% | \$5,005 21.18% | \$23,628 |
| DC Overall | \$21,002 88.14% | \$2,827 11.86% | \$23,828 |