

Message from the School

Ingenuity Prep prepares students to succeed in college and beyond as impactful civic leaders. The school's model, which utilizes digital content and multiple highly-qualified teachers in every classroom, provides students frequent opportunities to learn in small groups - with instruction designed to challenge students according to their individual needs.



📍 4600 LIVINGSTON ROAD SE, Washington, DC 20032
 🏠 Ward 8
 ☎️ (202) 562-0391

School Instructional Hours

Monday: 08:00AM - 03:40PM
Tuesday: 08:00AM - 03:40PM
Wednesday: 08:00AM - 03:40PM
Thursday: 08:00AM - 03:40PM
Friday: 08:00AM - 03:40PM

Total Students (2020-21 Ever-Enrolled): 763

Total Teachers: 77

Total School Leaders: 9

Grades Served: PK3, PK4, KG, 1, 2, 3, 4, 5, 6, 7, 8

Principal: Will Stoetzer

Title-I Status: Yes

Local Education Agency (LEA): Ingenuity Prep PCS

School Uniforms Required: Yes

Bus Line(s): A6, A8, A9, A46, A48, P17, P18, P19, W13, W14

Metro Line(s): Congress Heights

Before Care Offered: Yes

- **Cost:** Free

After Care Offered: Yes

- **Cost:** Sliding Scale

School Program Information

Blended Learning
 Extended day
 Restorative Justice Program

Parent Organization

Parent Organization Offered: Yes

Parent Organization Contact: Naya Patterson
 (npatterson@ingenuityprep.org)

Parent Organization Website: Not Provided

Extracurricular & Enrichment Activities

Blended Learning
 Small-group instruction
 Daily specials including PE/Recess
 Dance
 Music
 And Art

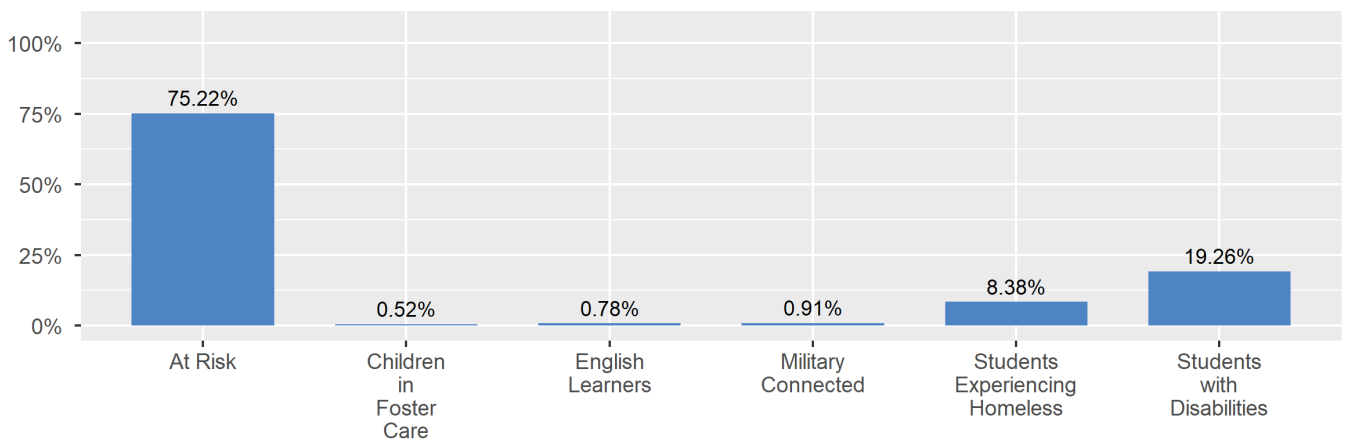
School Enrollment

The ever-enrolled count is the total number of students who are enrolled at any point during the school year; a student who attends a school for one day or 180 days is counted the same way. For this reason, the ever-enrolled count will always be larger than the audit count.

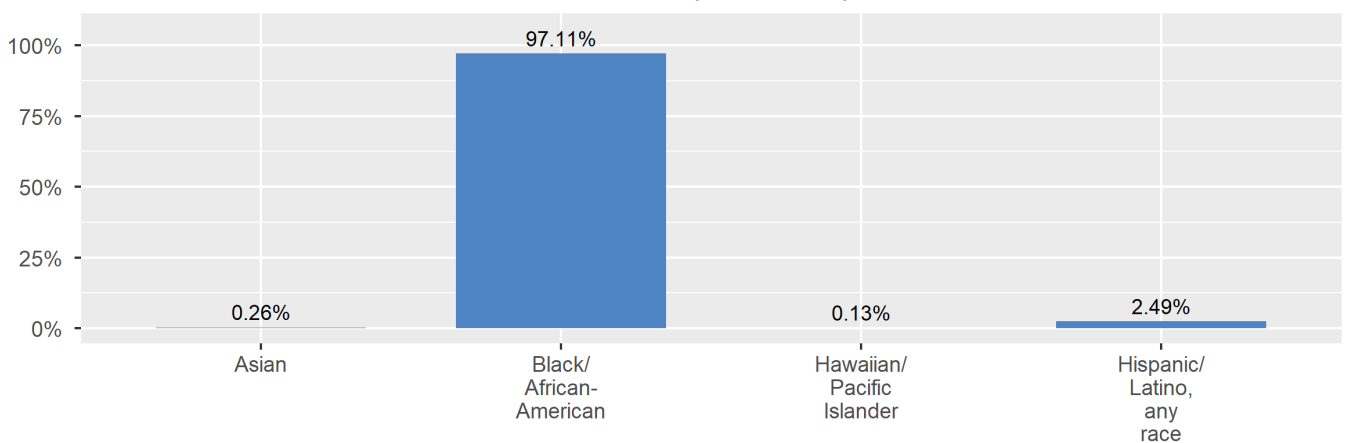
2020-21 Ever-Enrolled by Grade Level

| PK3 | PK4 | KG | Grade 01 | Grade 02 |
|----------|----------|----------|----------|----------|
| 60 | 81 | 81 | 78 | 86 |
| Grade 03 | Grade 04 | Grade 05 | Grade 06 | Grade 07 |
| 72 | 86 | 67 | 75 | 77 |

Enrollment by Student Group



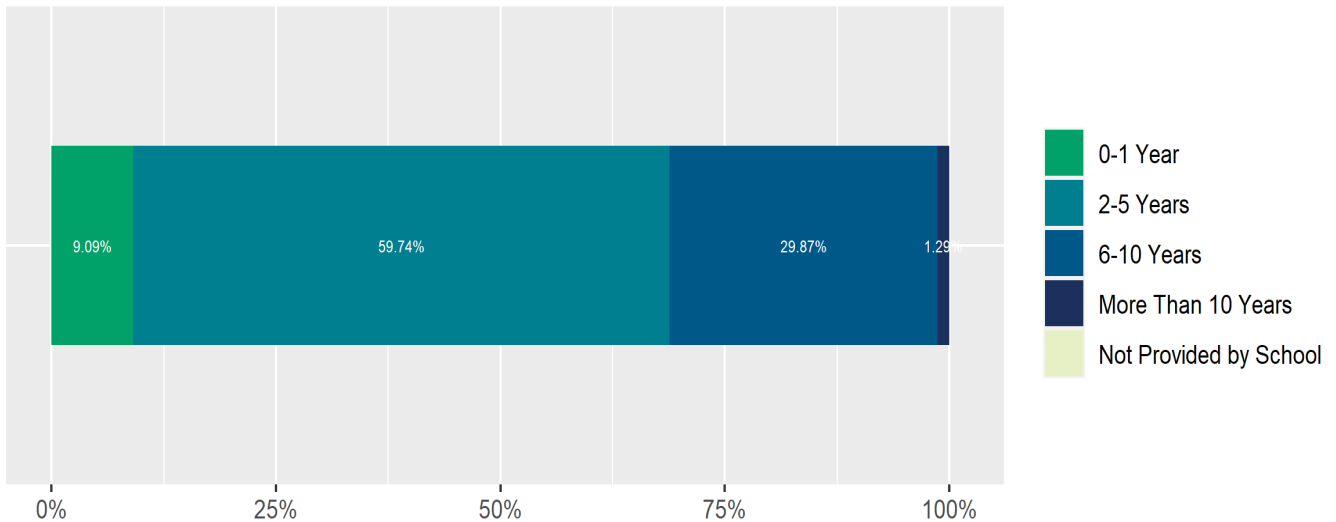
Enrollment by Race/Ethnicity



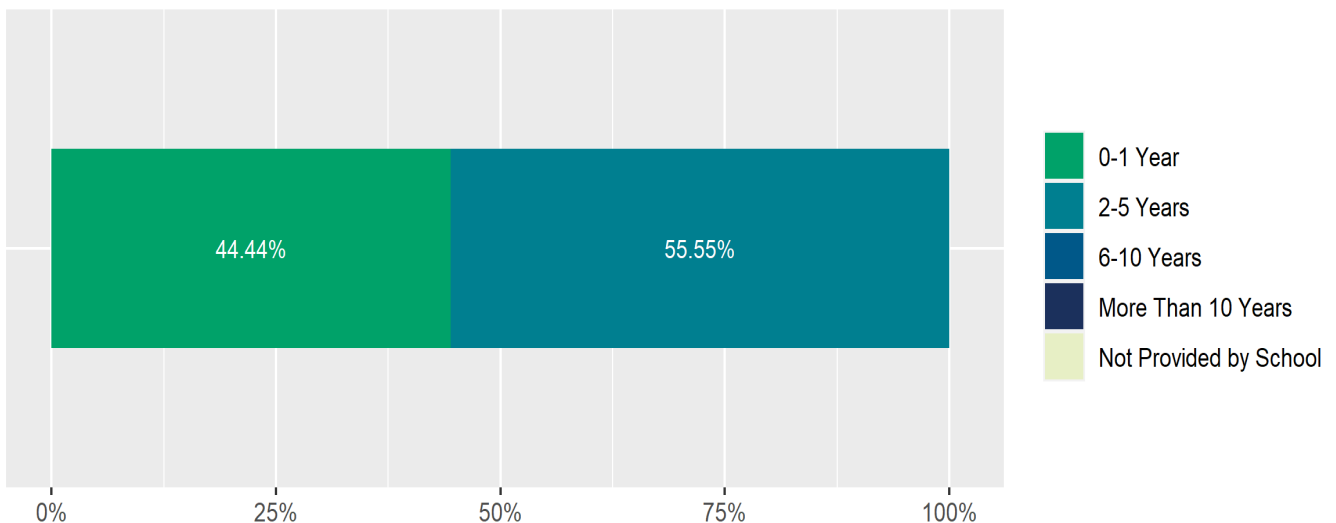
Teacher and School Leader Data

This page includes information about teacher experience levels in DC Public Schools and public charter schools. For DC Public Schools, it also includes information about credentialed and in-field teachers.

Teacher - Years of Experience



School Leader - Years of Experience



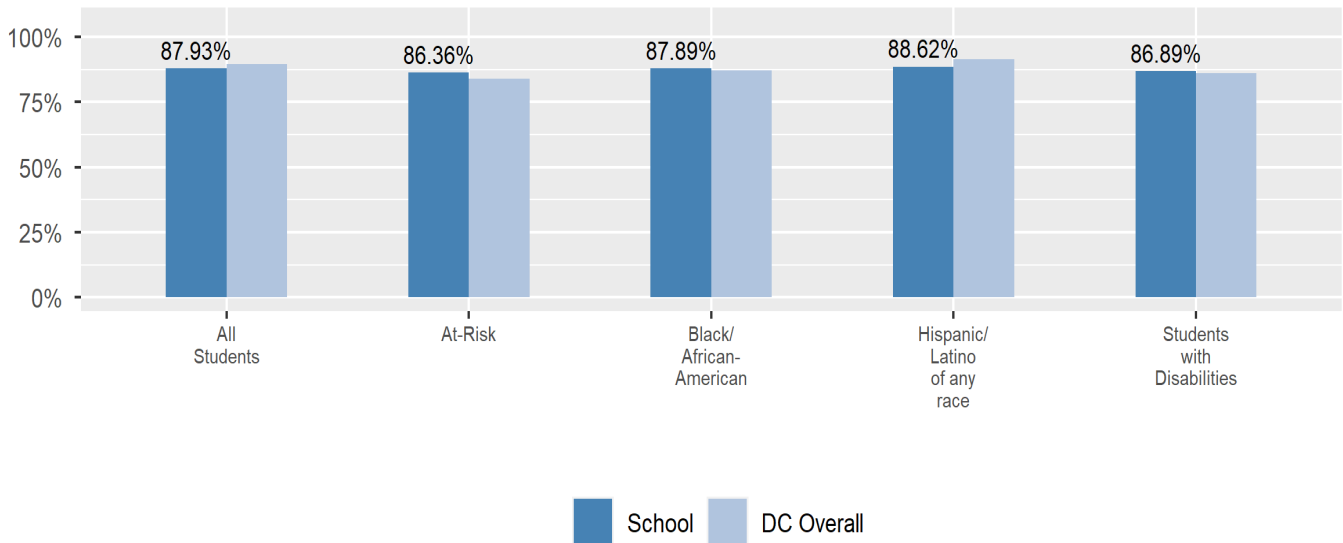
School Safety and Discipline

Information about discipline and school safety in DC, in accordance with the U.S. Department of Education's Civil Rights Data collection, including suspensions and expulsions for students, school related arrests, reported incidents of violence, bullying, and harassment are available in the OSSE Discipline report and data files (<https://osse.dc.gov/page/data-and-reports-0>).

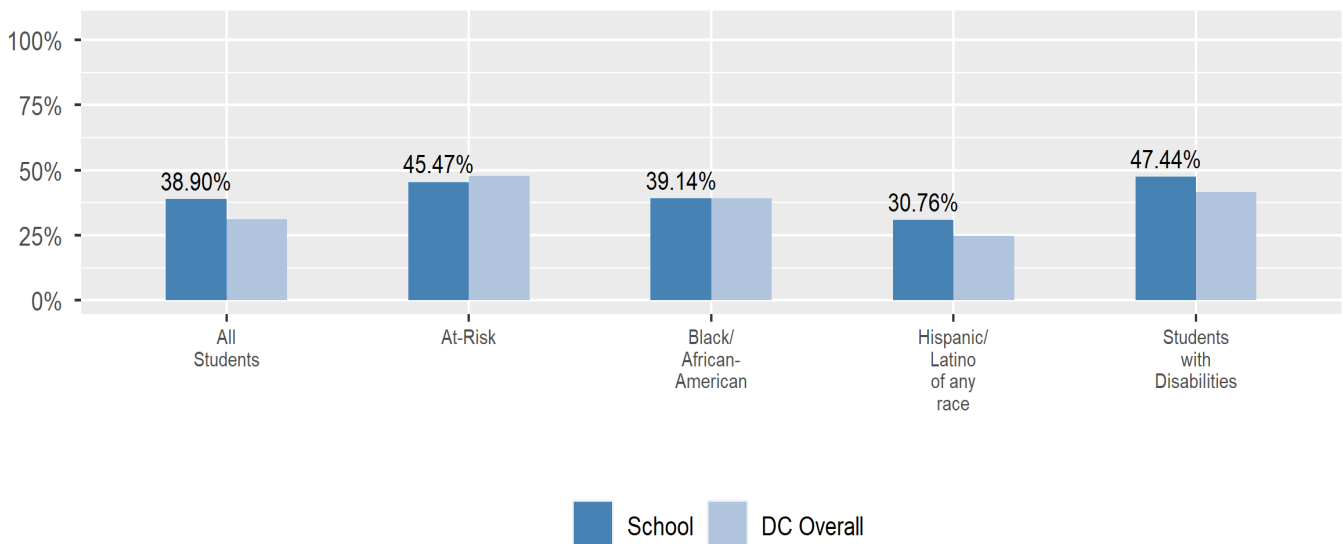
Attendance

Review information on attendance below, including in-seat attendance for all students (there is a separate measure of attendance for pre-K students, since pre-K is not compulsory), and the percentage of students chronically absent, meaning that they miss at least 10% of the school days for which they are enrolled throughout the school year at the school. Note: Due to variations in schools schedules, attendance data may have been collected differently by schools on synchronous and asynchronous learning days. As a result attendance data is unique to this school year and not necessarily comparable to prior years.

In-Seat Attendance

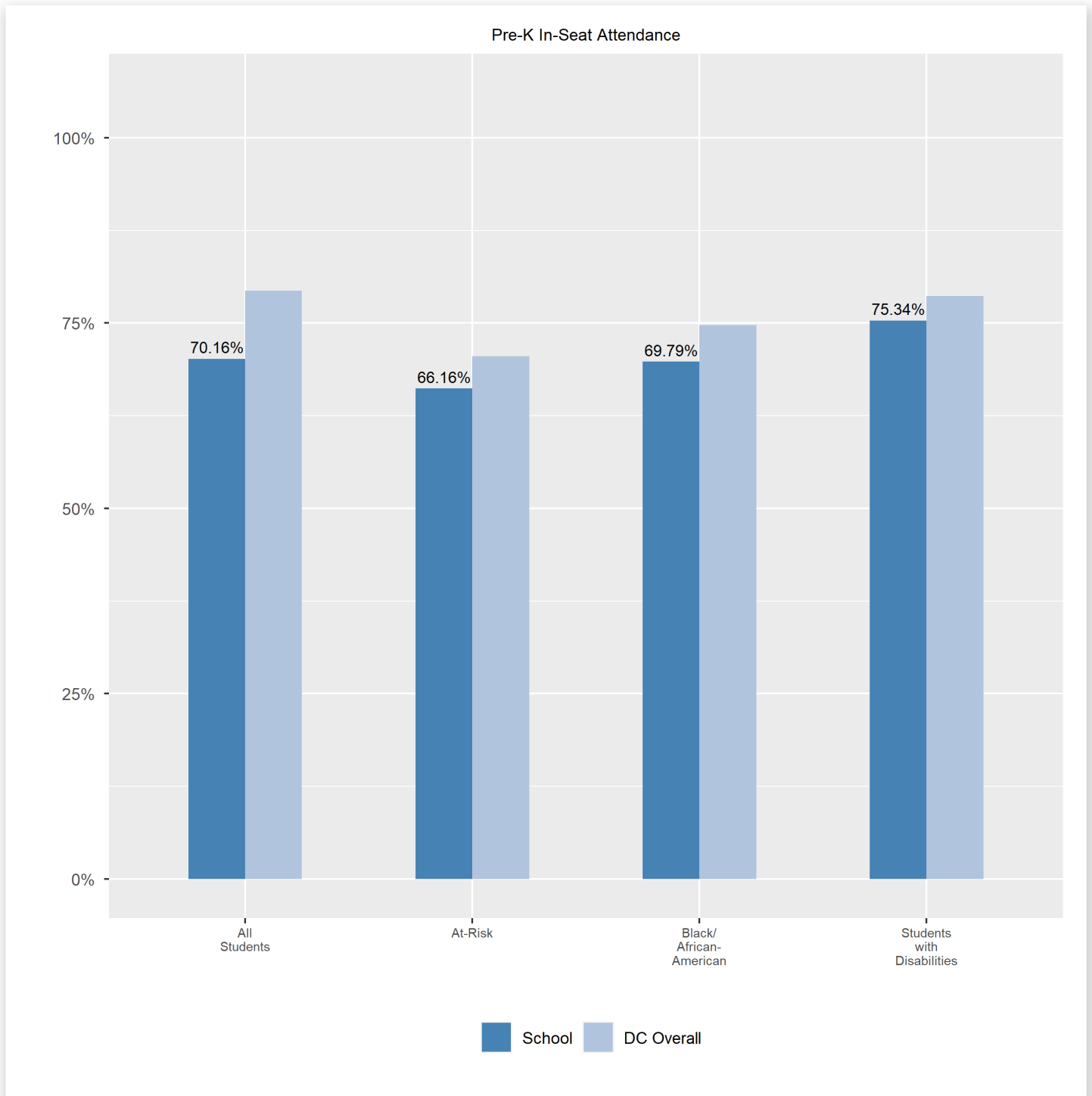


Chronic Absenteeism



Pre-K In-Seat Attendance

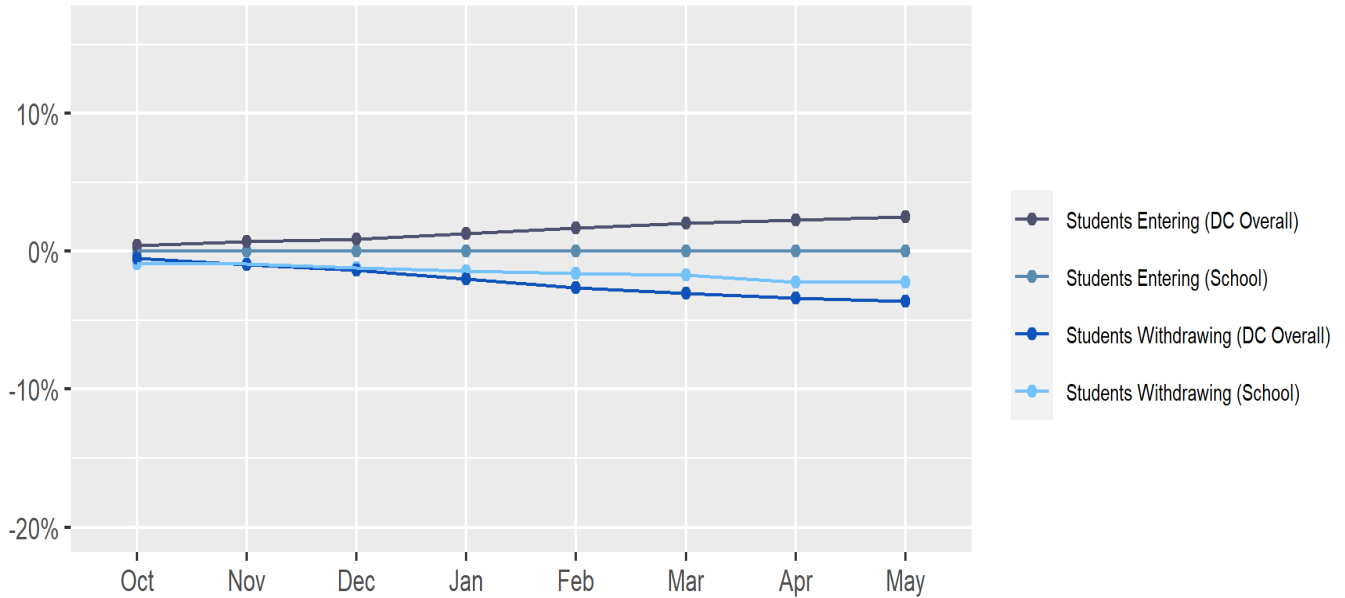
Review information on attendance at the school. This includes in-seat attendance for all students (including a separate measure of attendance for pre-K students, since pre-K is not compulsory), the percentage of students chronically absent, meaning that they miss at least 10% of the school days for which they are enrolled throughout the school year at the school.



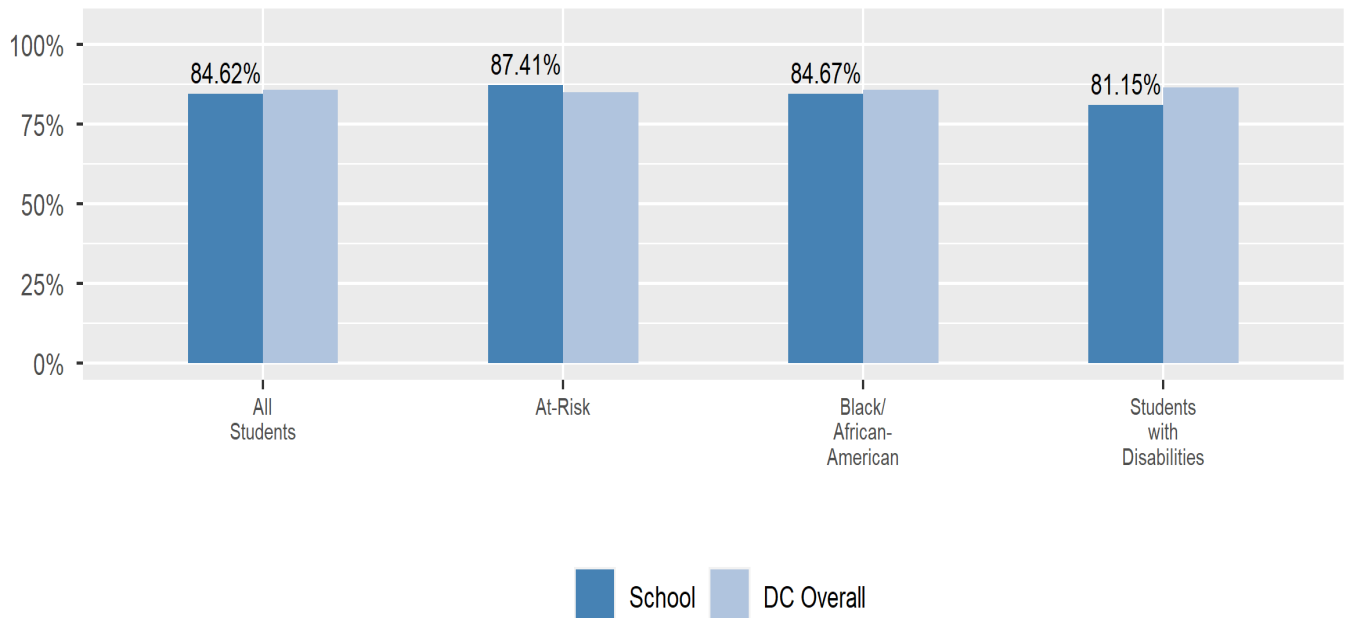
Student Enrollment Changes

Explore information on how much the population at the school changes throughout the year or from year to year. It shows information about changes in enrollment, including whether students leave or enter the school mid-year, and whether eligible students choose to re-enroll in the school.

Mobility



Re-Enrollment



Finance

Per-pupil expenditures represent the average amount of money spent on educating each student. In other words, this value represents the total amount of actual school expenditures divided by the number of students in the school.

2021 Per-pupil Expenditures

Per-pupil expenditure amount is calculated by dividing the total school expenditures by the October enrollment audit count of public school students.

Per-pupil: \$22,221

October Enrollment Audit Count: 756

Total School Expenditures: \$16,799,229

Total Excluded Expenditures: \$928,363

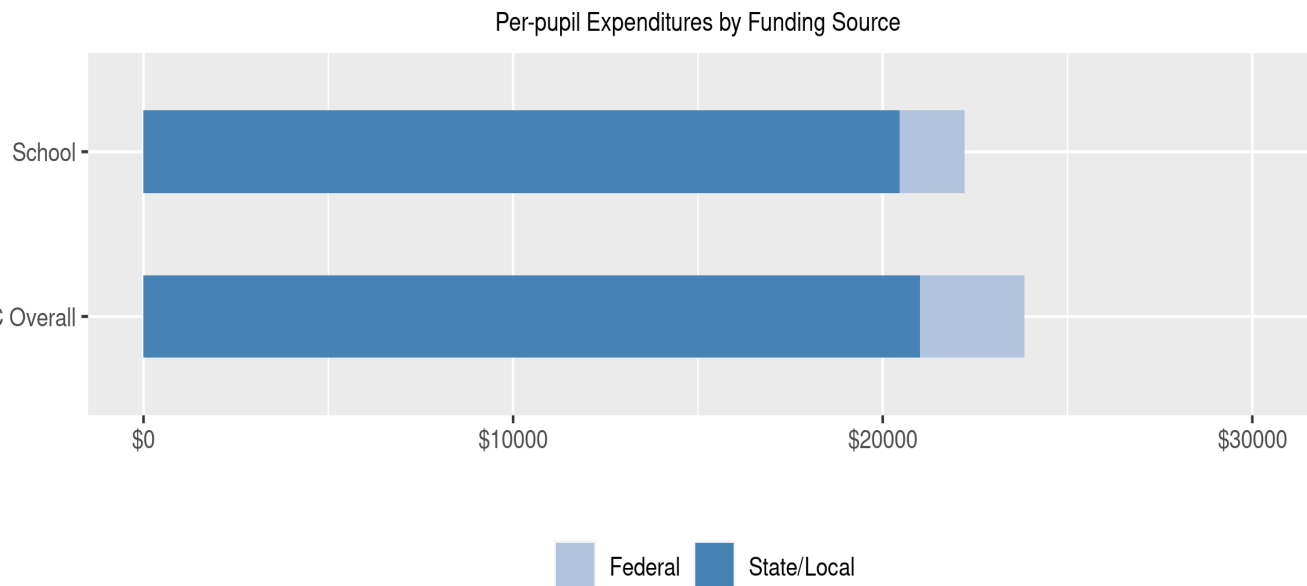
Excluded expenditures include: debt service, capital expenditures, construction and capital improvements, community service operations, and expenditures sourced from private funds (such as parent fees and corporate or charitable donations.) These are not included in the per-pupil expenditure calculation because they are considered outside of the day-to-day operation of the school.

2021 Total Expenditures \$17,727,592

The sum of total school and excluded expenditures is the total amount of money the LEA spent for the fiscal year.

Per-pupil Expenditures by Funding Source

Details are provided about the funding sources for per-pupil expenditures. State/local sources represent revenue received directly from DC, including local grants and per-pupil funding. Federal sources include federal revenue, such as Title I funds and IDEA funding. Per-pupil expenditures are displayed compared to the LEA and DC average.



| | State/Local | Federal | Total |
|------------|-----------------|----------------|----------|
| School | \$20,451 92.03% | \$1,770 7.97% | \$22,221 |
| DC Overall | \$21,002 88.14% | \$2,827 11.86% | \$23,828 |