

## Message from the School

SSMA offers a quality and accredited Montessori education infused with culturally inclusive principles to guide children to develop to their fullest potential. We have multi-aged classrooms, special Montessori materials, uninterrupted work cycles, integrated arts programming, dual language Spanish immersion, and individual and small group learning opportunities. The School also offers a robust Montessori hybrid and distance learning program with 1:1 and small group academic lessons.



📍 1240 RANDOLPH STREET NE, Washington, DC 20017

🏠 Ward 5

📞 (202) 723-1467

## School Instructional Hours

**Monday:** 08:15AM - 03:30PM

**Tuesday:** 08:15AM - 03:30PM

**Wednesday:** 08:15AM - 03:30PM

**Thursday:** 08:15AM - 03:30PM

**Friday:** 08:15AM - 03:30PM

**Total Students (2020-21 Ever-Enrolled):** 292

**Total Teachers:** 19

**Total School Leaders:** 2

**Grades Served:** PK3, PK4, KG, 1, 2, 3, 4, 5, 6

**Principal:** Gail Jenkins

**Title-I Status:** Yes

**Local Education Agency (LEA):** Shining Stars Montessori Academy  
PCS

**School Uniforms Required:**

No

**Bus Line(s):** H6, 80

**Metro Line(s):** Brookland-CUA

**Before Care Offered:** Yes

◦ **Cost:** Paid

**After Care Offered:** Yes

◦ **Cost:** Sliding Scale

## School Program Information

Dual Lang/Lang.  
Immersion

Extended day

Montessori

## Parent Organization

**Parent Organization Offered:** Yes

**Parent Organization Contact:** SSMA Point of  
Contact (board@ssmaca.org)

**Parent Organization Website:** Not Provided

## Extracurricular & Enrichment Activities

Arts/Crafts

Spanish/French

Gardening

Robotics/Chess/Cooking/Elem Honor Society

Student Govt

Montessori UN/Wellness/Movement

Dance

Photography

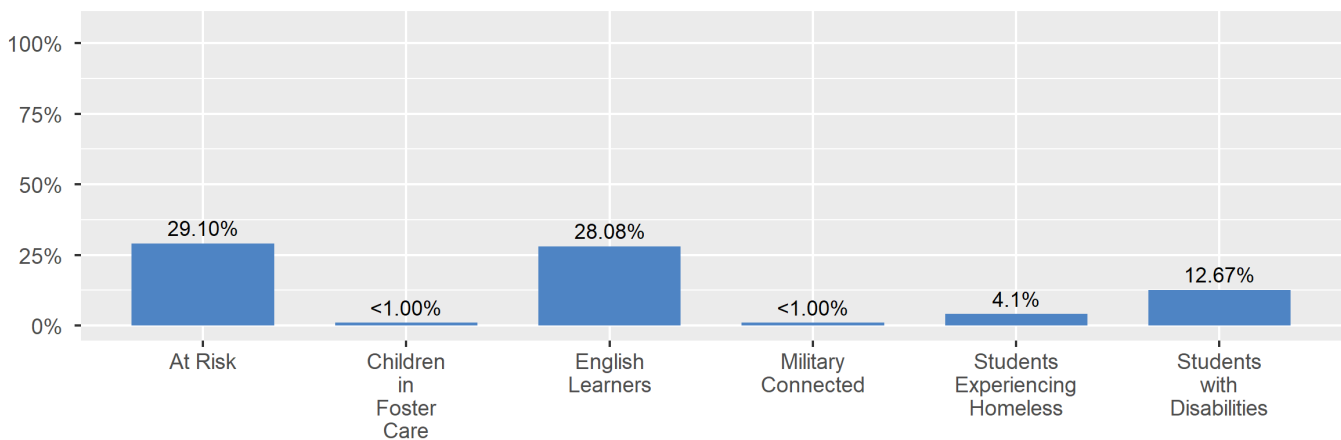
## School Enrollment

The ever-enrolled count is the total number of students who are enrolled at any point during the school year; a student who attends a school for one day or 180 days is counted the same way. For this reason, the ever-enrolled count will always be larger than the audit count.

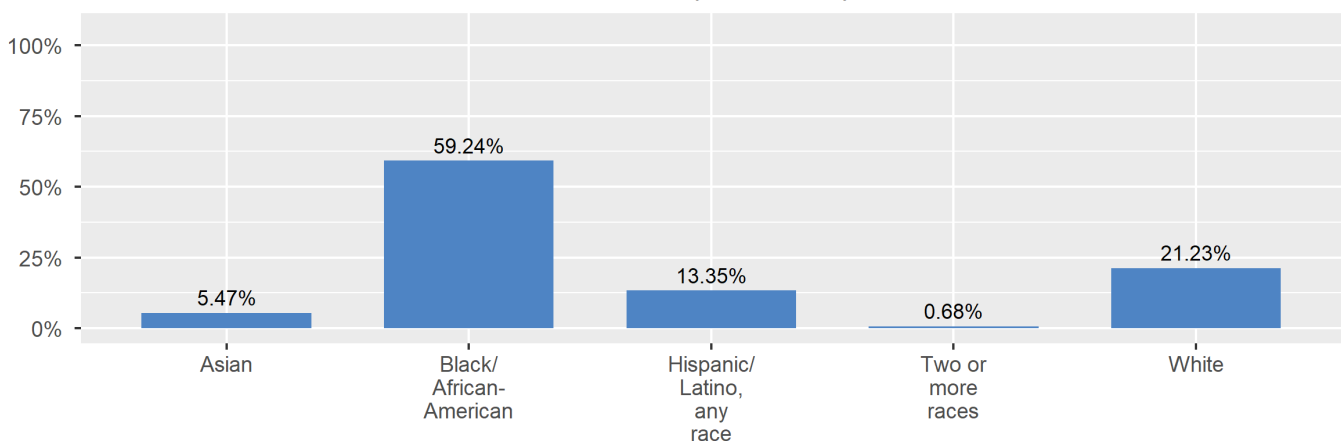
2020-21 Ever-Enrolled by Grade Level

PK3	PK4	KG	Grade 01	Grade 02
49	57	46	32	36
Grade 03	Grade 04	Grade 05	Grade 06	
24	31	12	5	

Enrollment by Student Group



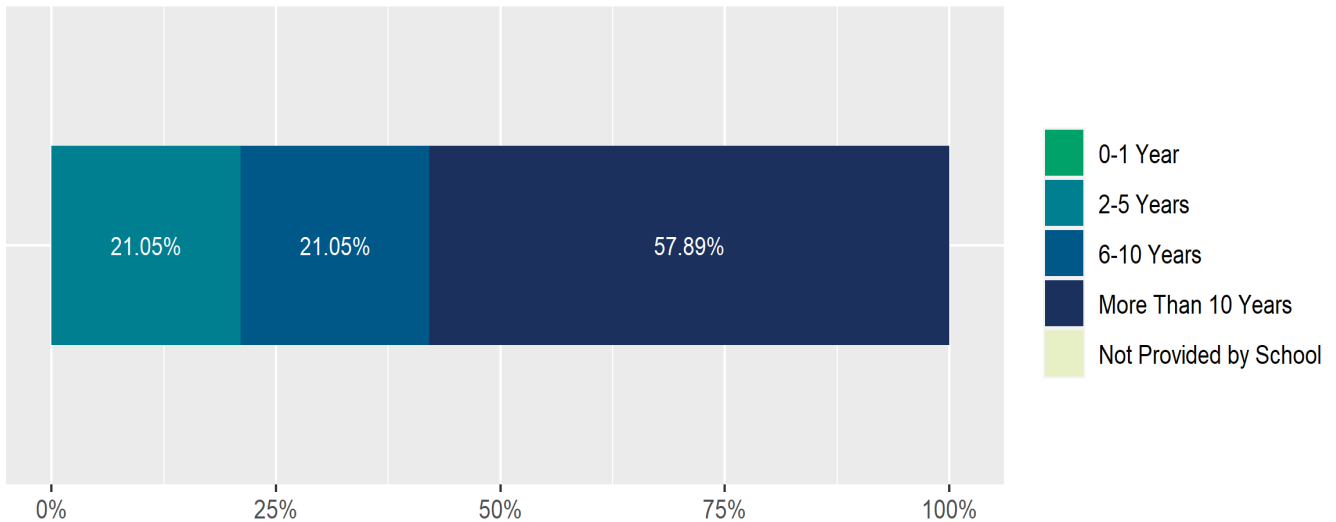
Enrollment by Race/Ethnicity



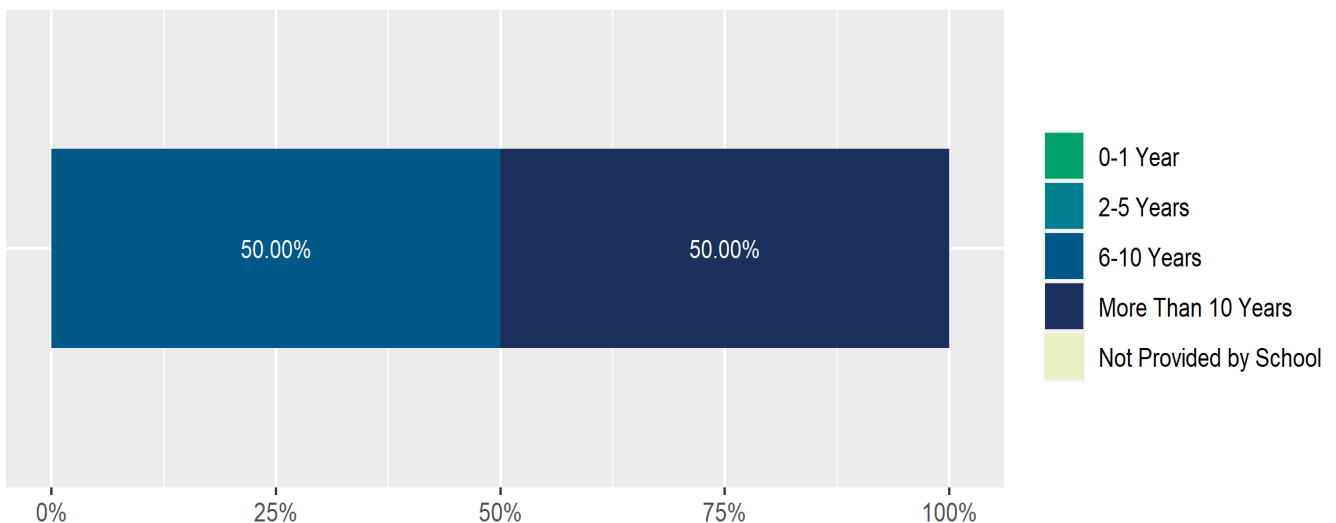
## Teacher and School Leader Data

This page includes information about teacher experience levels in DC Public Schools and public charter schools. For DC Public Schools, it also includes information about credentialed and in-field teachers.

Teacher - Years of Experience



School Leader - Years of Experience



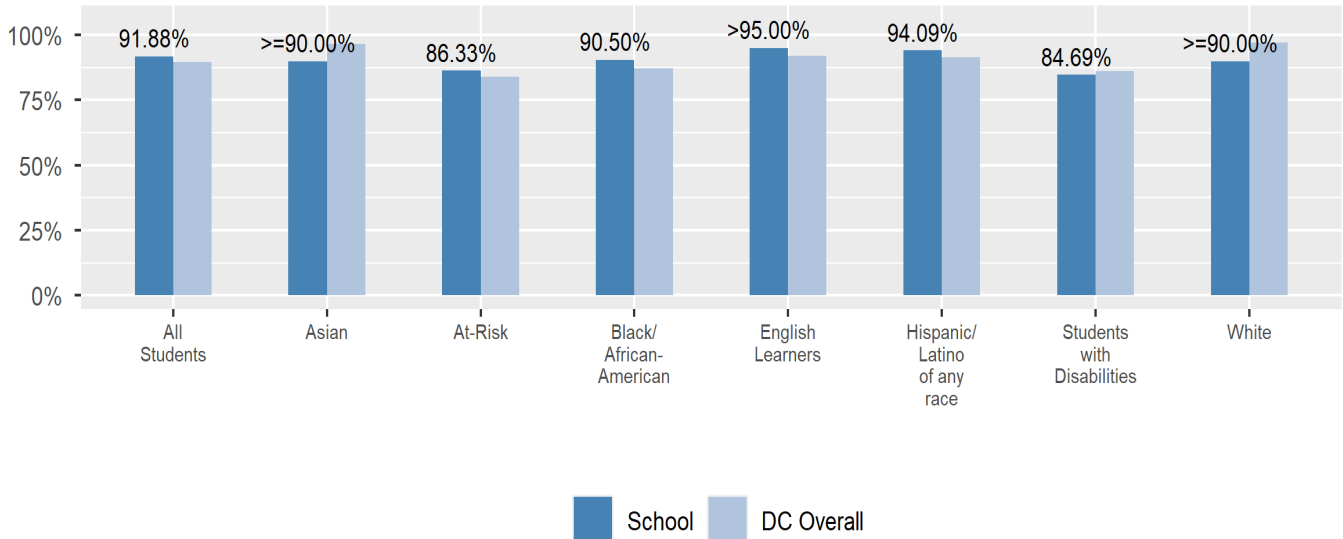
## School Safety and Discipline

Information about discipline and school safety in DC, in accordance with the U.S. Department of Education's Civil Rights Data collection, including suspensions and expulsions for students, school related arrests, reported incidents of violence, bullying, and harassment are available in the OSSE Discipline report and data files (<https://osse.dc.gov/page/data-and-reports-0>).

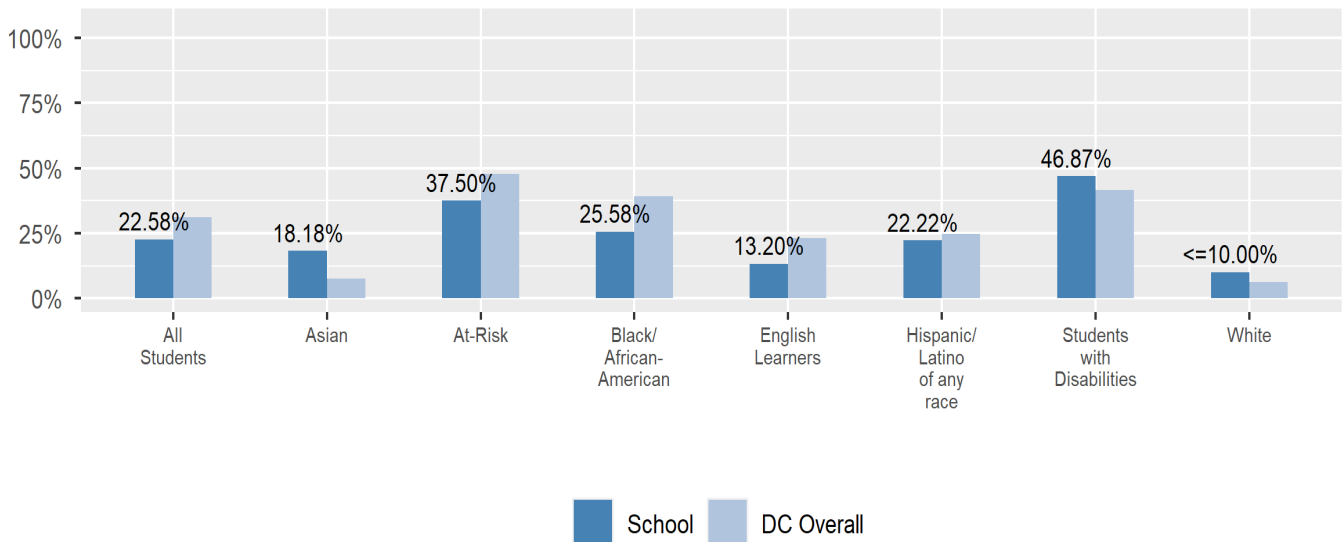
## Attendance

Review information on attendance below, including in-seat attendance for all students (there is a separate measure of attendance for pre-K students, since pre-K is not compulsory), and the percentage of students chronically absent, meaning that they miss at least 10% of the school days for which they are enrolled throughout the school year at the school. Note: Due to variations in schools schedules, attendance data may have been collected differently by schools on synchronous and asynchronous learning days. As a result attendance data is unique to this school year and not necessarily comparable to prior years.

In-Seat Attendance



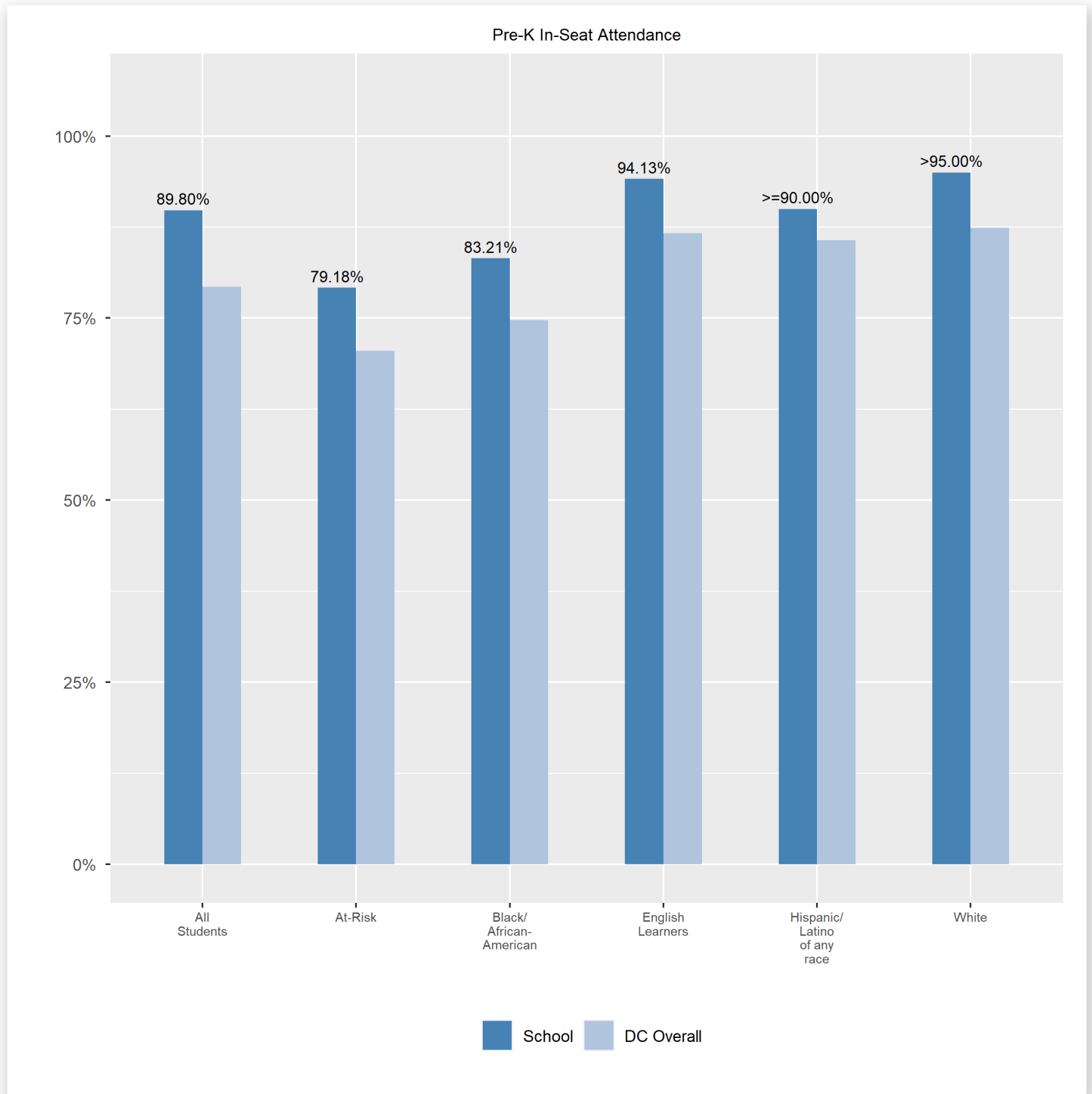
Chronic Absenteeism





## Pre-K In-Seat Attendance

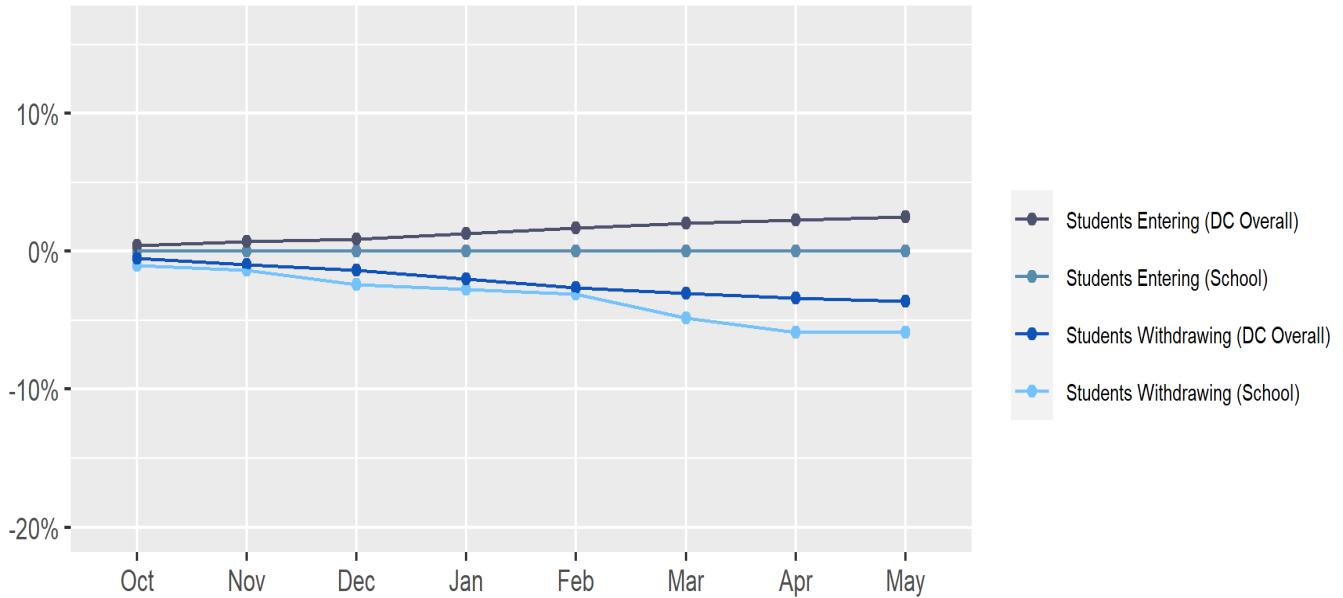
Review information on attendance at the school. This includes in-seat attendance for all students (including a separate measure of attendance for pre-K students, since pre-K is not compulsory), the percentage of students chronically absent, meaning that they miss at least 10% of the school days for which they are enrolled throughout the school year at the school.



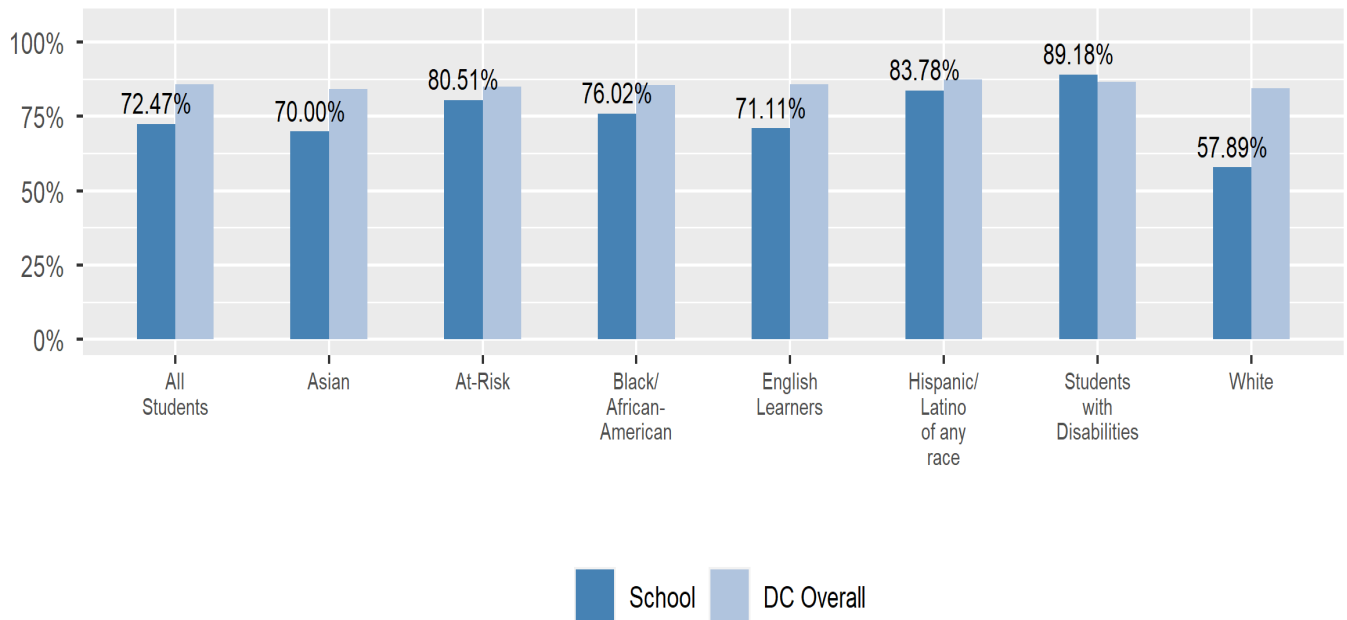
## Student Enrollment Changes

Explore information on how much the population at the school changes throughout the year or from year to year. It shows information about changes in enrollment, including whether students leave or enter the school mid-year, and whether eligible students choose to re-enroll in the school.

Mobility



Re-Enrollment



## Finance

Per-pupil expenditures represent the average amount of money spent on educating each student. In other words, this value represents the total amount of actual school expenditures divided by the number of students in the school.

### 2021 Per-pupil Expenditures

Per-pupil expenditure amount is calculated by dividing the total school expenditures by the October enrollment audit count of public school students.

**Per-pupil: \$15,795**

**October Enrollment Audit Count: 288**

**Total School Expenditures: \$4,549,019**

**Total Excluded Expenditures: \$11,507,418**

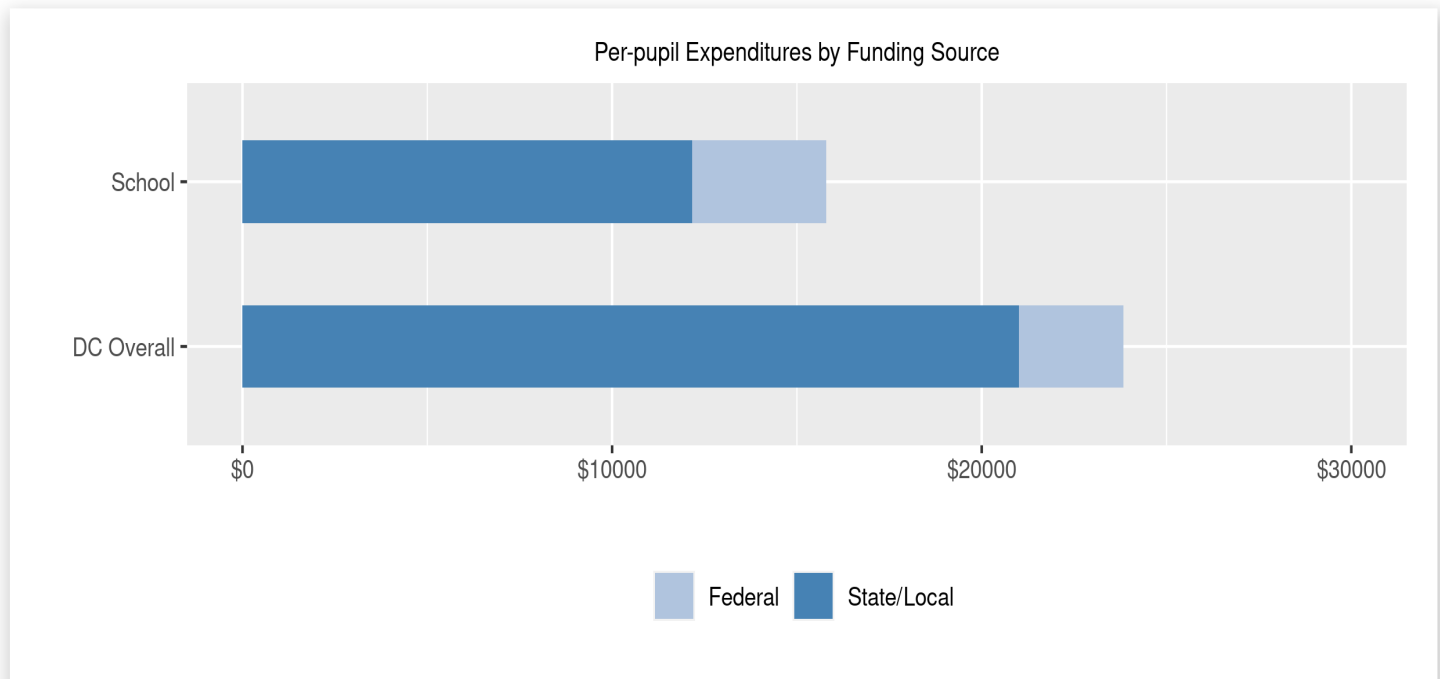
Excluded expenditures include: debt service, capital expenditures, construction and capital improvements, community service operations, and expenditures sourced from private funds (such as parent fees and corporate or charitable donations.) These are not included in the per-pupil expenditure calculation because they are considered outside of the day-to-day operation of the school.

**2021 Total Expenditures \$16,056,437**

The sum of total school and excluded expenditures is the total amount of money the LEA spent for the fiscal year.

### Per-pupil Expenditures by Funding Source

Details are provided about the funding sources for per-pupil expenditures. State/local sources represent revenue received directly from DC, including local grants and per-pupil funding. Federal sources include federal revenue, such as Title I funds and IDEA funding. Per-pupil expenditures are displayed compared to the LEA and DC average.



	State/Local	Federal	Total
School	\$12,170 77.05%	\$3,625 22.95%	\$15,795
DC Overall	\$21,002 88.14%	\$2,827 11.86%	\$23,828