

## Message from the School

At Inspired Teaching Demonstration PCS, students learn through an academically challenging, standards-based curriculum that supports and builds their intellect, inquiry skills, imagination, and integrity. Master Teachers lead every classroom, instruction is individualized, and learning is joyful and engaging. This mission continues to drive our instructional practice during the pandemic. Information on the full impact of COVID-19 on our daily school operations is available on our website.



📍 200 DOUGLAS STREET NE, Washington, DC 20002

🏠 Ward 5

📞 (202) 248-6825

## School Instructional Hours

**Monday:** 08:30AM - 03:30PM

**Tuesday:** 08:30AM - 03:30PM

**Wednesday:** 08:30AM - 03:30PM

**Thursday:** 08:30AM - 03:30PM

**Friday:** 08:30AM - 03:30PM

**Total Students (2021-22 Ever-Enrolled):** 523

**Total Teachers:** 37

**Total School Leaders:** 3

**Grades Served:** PK3, PK4, KG, 1, 2, 3, 4, 5, 6, 7, 8

**Head of School:** Dr. Sundai Riggins

**Title-I Status:** No

**Local Education Agency (LEA):** Inspired Teaching Demonstration PCS

**School Uniforms Required:** No

**Bus Line(s):** 80, D8, G8, H1, H2, H3, H4, P6

**Metro Line(s):** Rhode Island Ave; Brookland-CUA

**Before Care Offered:** Yes

◦ **Cost:** Paid

**After Care Offered:** Yes

◦ **Cost:** Paid

## School Program Information

Arts Integration  
Interscholastic Sports  
Restorative Justice Program  
School Garden

## Parent Organization

**Parent Organization Offered:** Yes

**Parent Organization Contact:** Leah Squires  
(info@inspiredfamiliesassociation.org)

**Parent Organization Website:**  
www.inspiredfamiliesassociation.org/

## Extracurricular & Enrichment Activities

Spanish  
Music  
Arts Integration  
Dance  
Theatre  
Coding  
After-School Clubs Sports

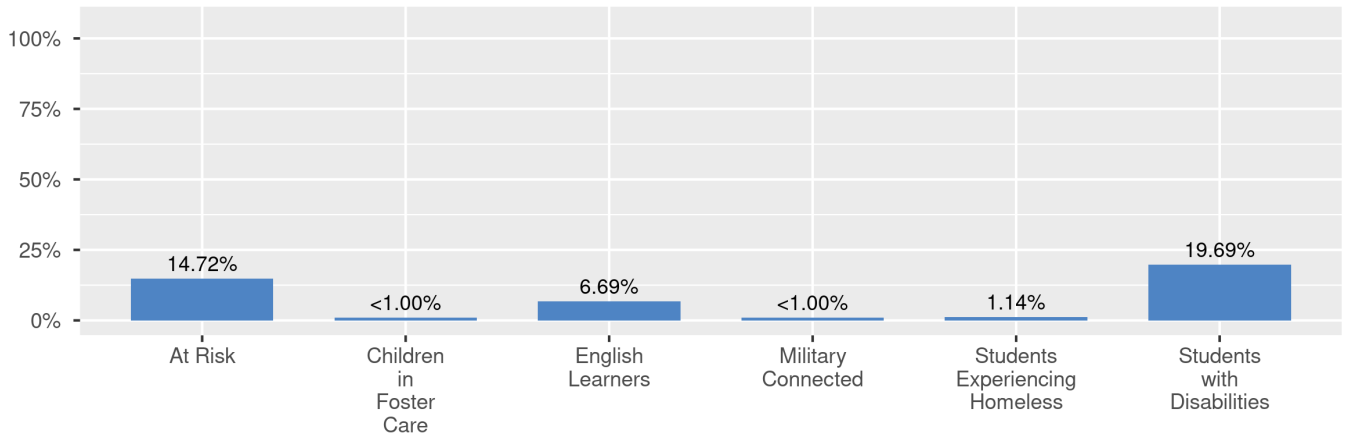
## School Enrollment

The ever-enrolled count is the total number of students who are enrolled at any point during the school year; a student who attends a school for one day or 180 days is counted the same way. For this reason, the ever-enrolled count will always be larger than the audit count.

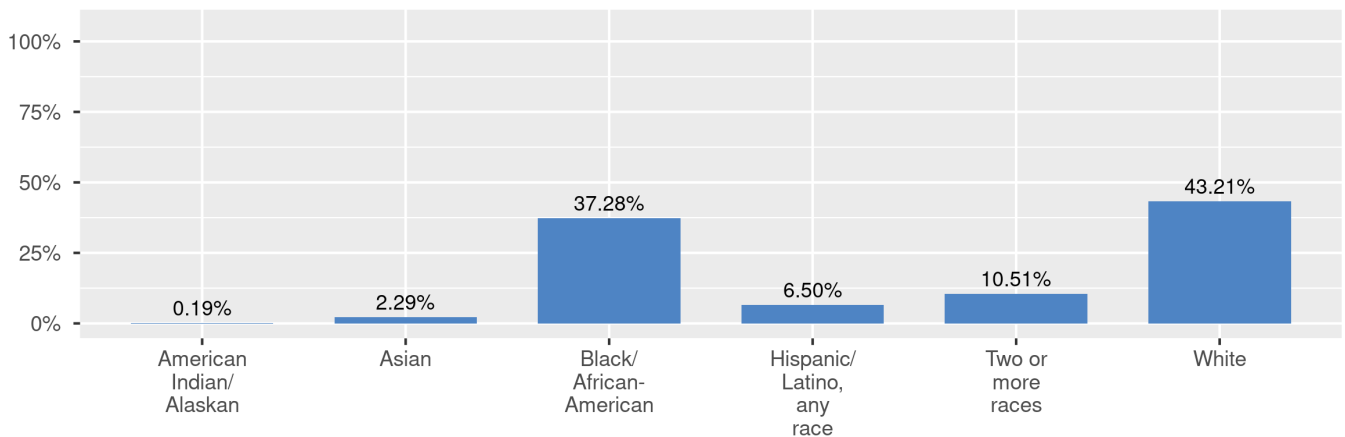
**2020-21 Ever-Enrolled by Grade Level**

PK3	PK4	KG	Grade 01	Grade 02	Grade 03
48	45	52	49	51	50
Grade 04	Grade 05	Grade 06	Grade 07	Grade 08	
51	49	50	40	38	

Enrollment by Student Group



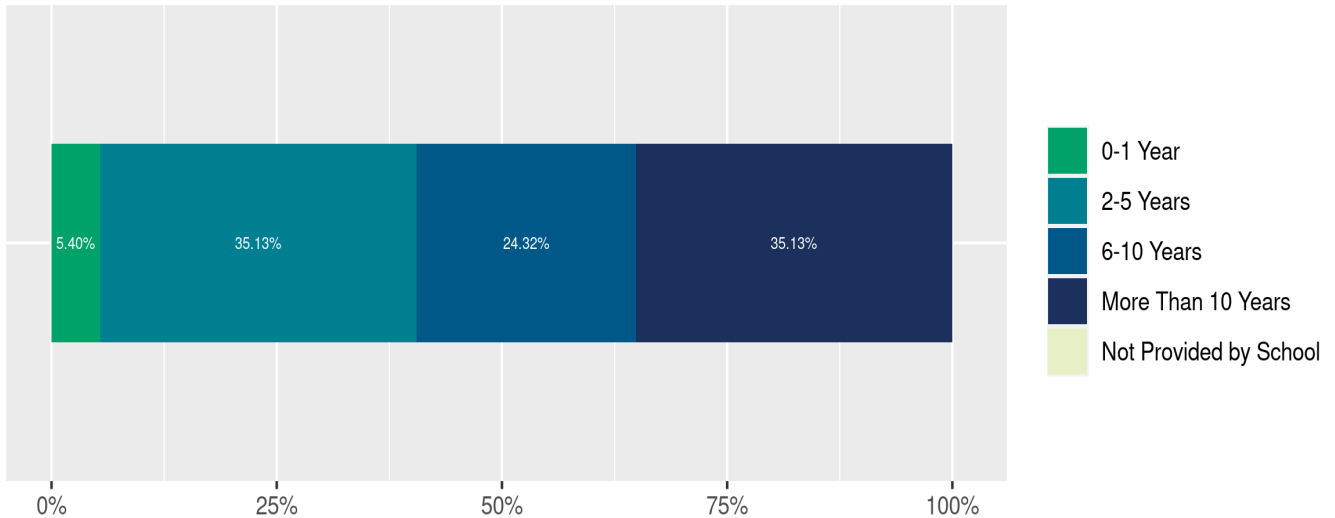
Enrollment by Race/Ethnicity



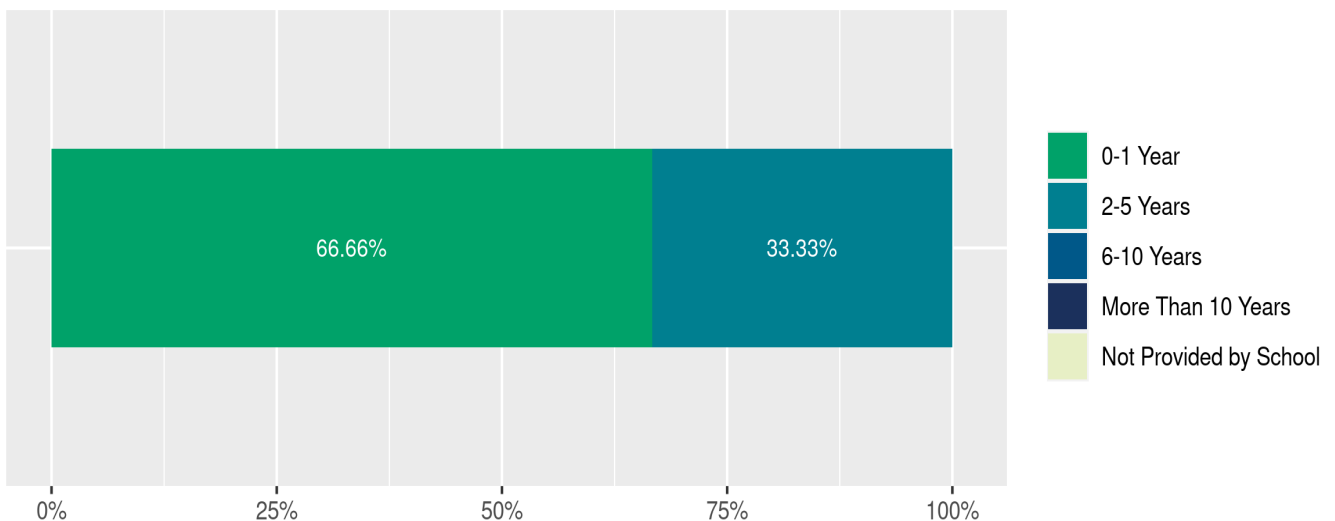
## Teacher and School Leader Data

This page includes information about teacher experience levels in DC Public Schools and public charter schools. For DC Public Schools, it also includes information about credentialed and in-field teachers.

Teacher - Years of Experience



School Leader - Years of Experience



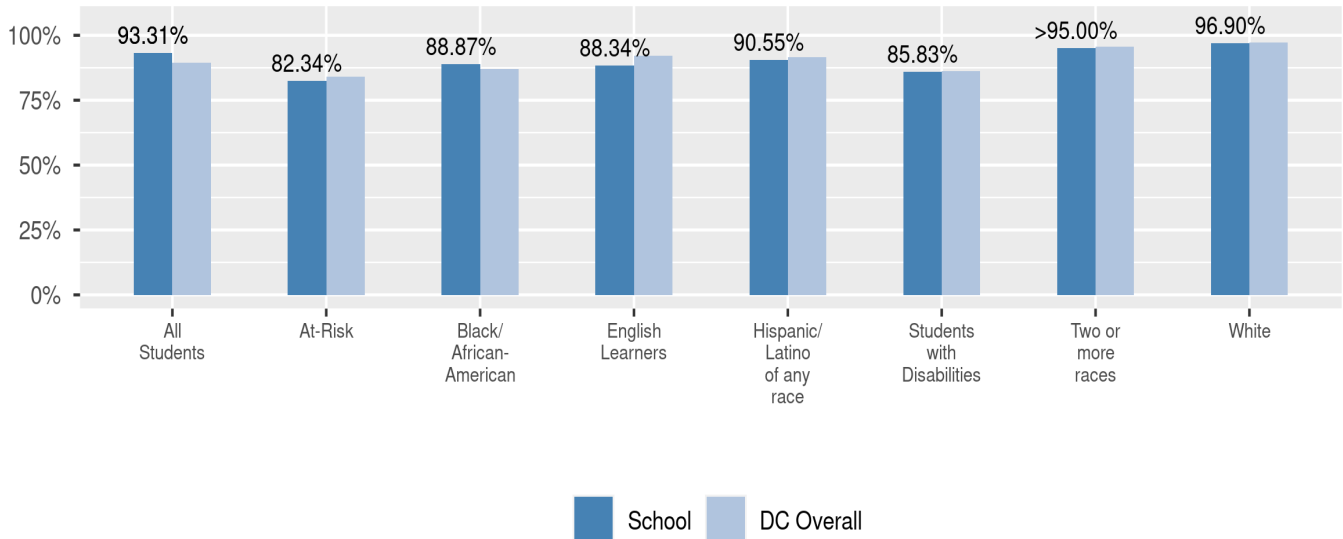
## School Safety and Discipline

Information about discipline and school safety in DC, in accordance with the U.S. Department of Education's Civil Rights Data collection, including suspensions and expulsions for students, school related arrests, reported incidents of violence, bullying, and harassment are available in the OSSE Discipline report and data files (<https://osse.dc.gov/page/data-and-reports-0>).

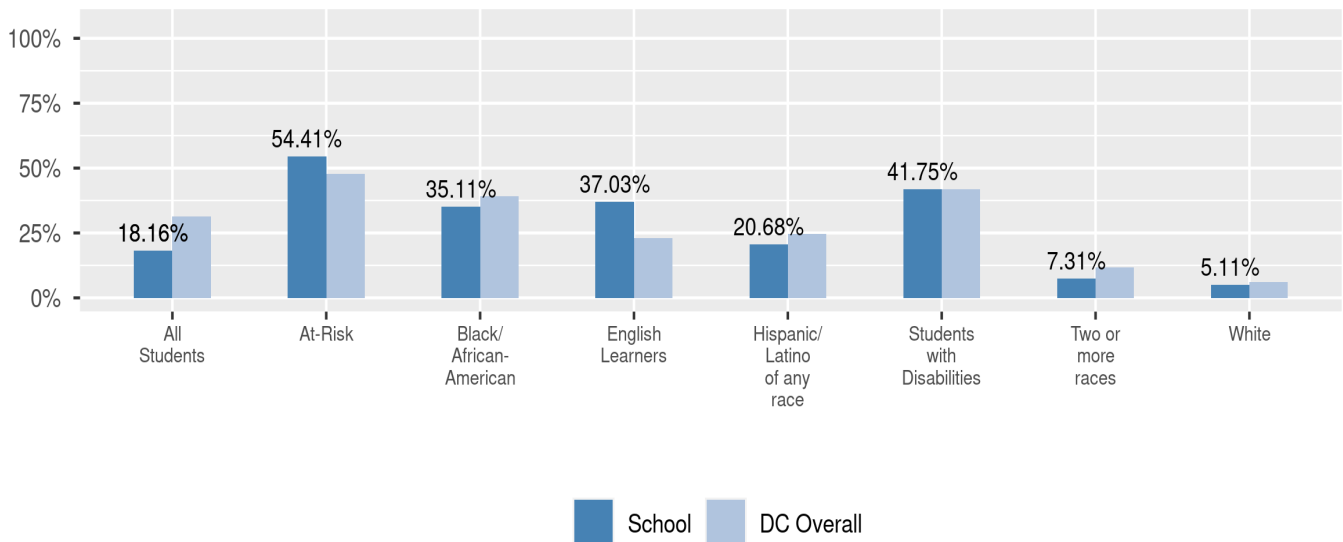
## Attendance

Review information on attendance below, including in-seat attendance for all students (there is a separate measure of attendance for pre-K students, since pre-K is not compulsory), and the percentage of students chronically absent, meaning that they miss at least 10% of the school days for which they are enrolled throughout the school year at the school. Note: Due to variations in schools schedules, attendance data may have been collected differently by schools on synchronous and asynchronous learning days. As a result attendance data is unique to this school year and not necessarily comparable to prior years.

In-Seat Attendance



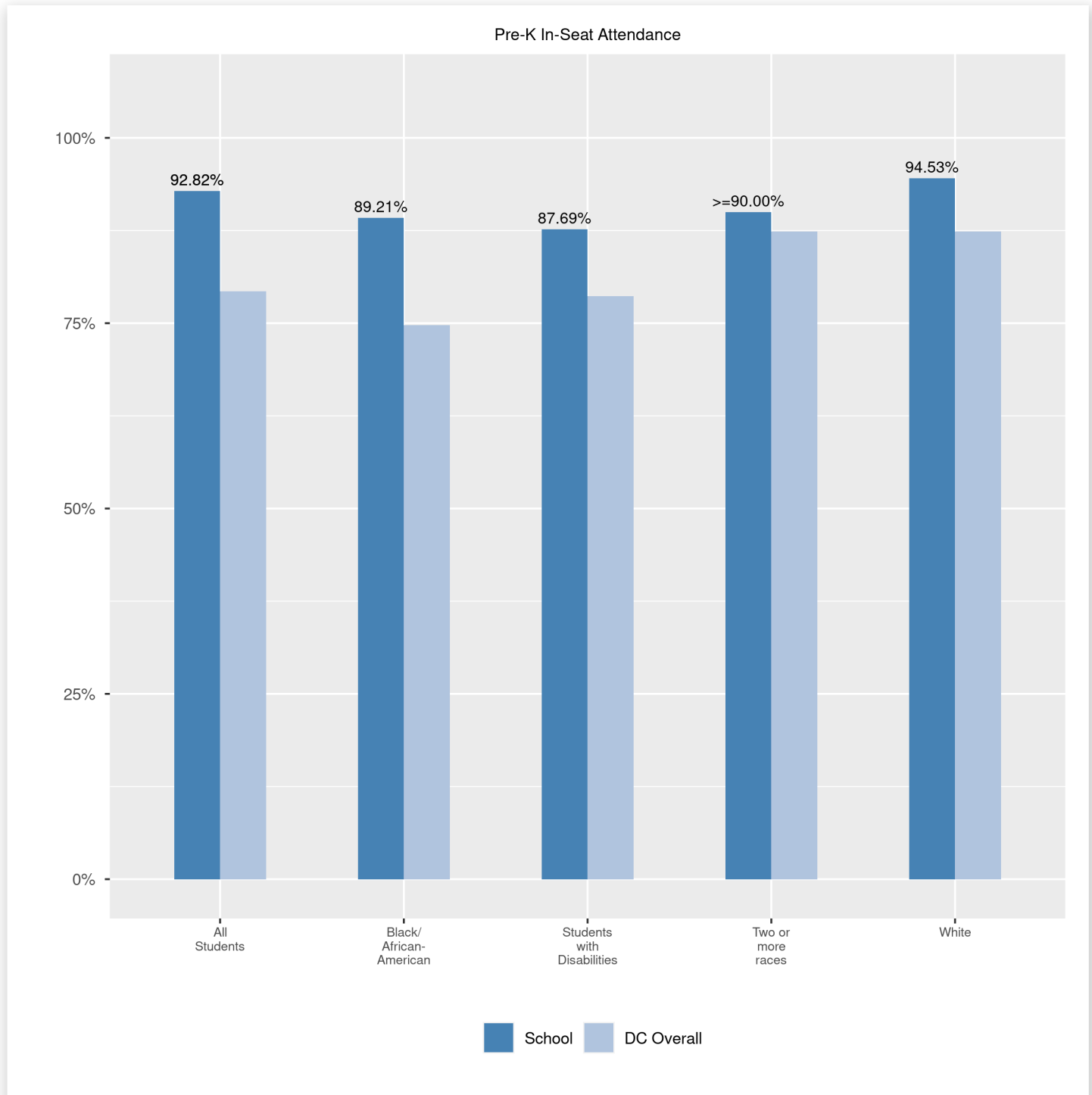
Chronic Absenteeism





## Pre-K In-Seat Attendance

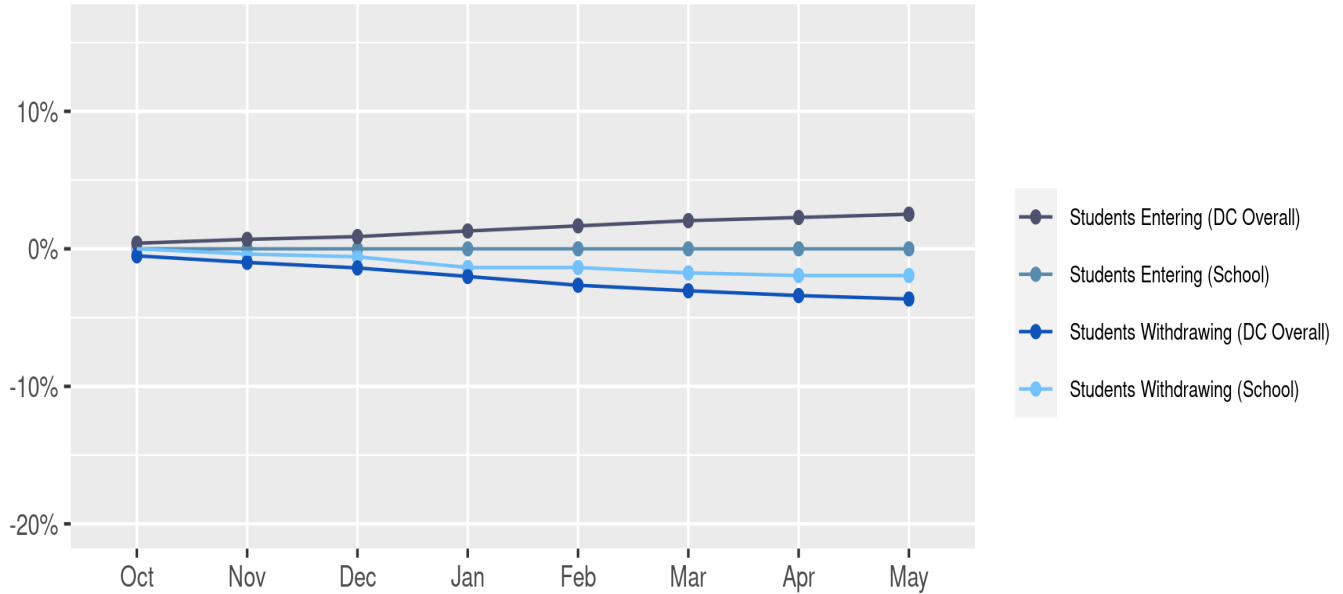
Review information on attendance at the school. This includes in-seat attendance for all students (including a separate measure of attendance for pre-K students, since pre-K is not compulsory), the percentage of students chronically absent, meaning that they miss at least 10% of the school days for which they are enrolled throughout the school year at the school.



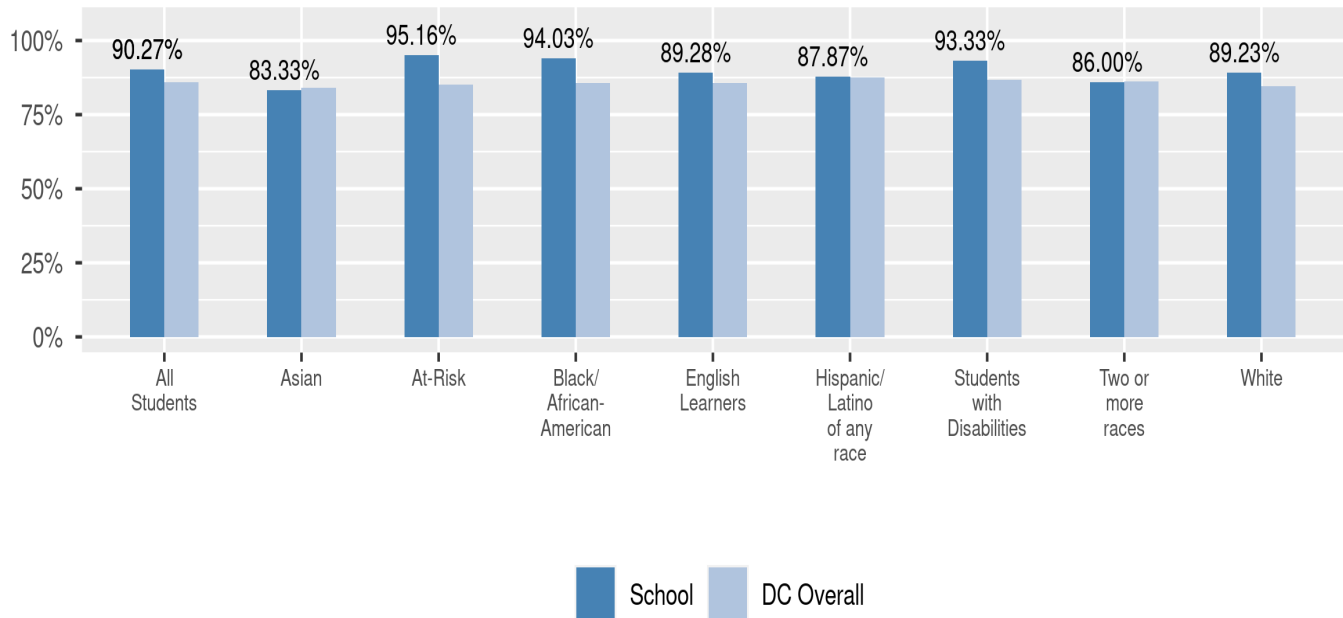
## Student Enrollment Changes

Explore information on how much the population at the school changes throughout the year or from year to year. It shows information about changes in enrollment, including whether students leave or enter the school mid-year, and whether eligible students choose to re-enroll in the school.

Mobility



Re-Enrollment



## Finance

Per-pupil expenditures represent the average amount of money spent on educating each student. In other words, this value represents the total amount of actual school expenditures divided by the number of students in the school.

### 2021 Per-pupil Expenditures

Per-pupil expenditure amount is calculated by dividing the total school expenditures by the October enrollment audit count of public school students.

**Per-pupil: \$19,916**

**October Enrollment Audit Count: 514**

**Total School Expenditures: \$10,236,895**

**Total Excluded Expenditures: \$704,569**

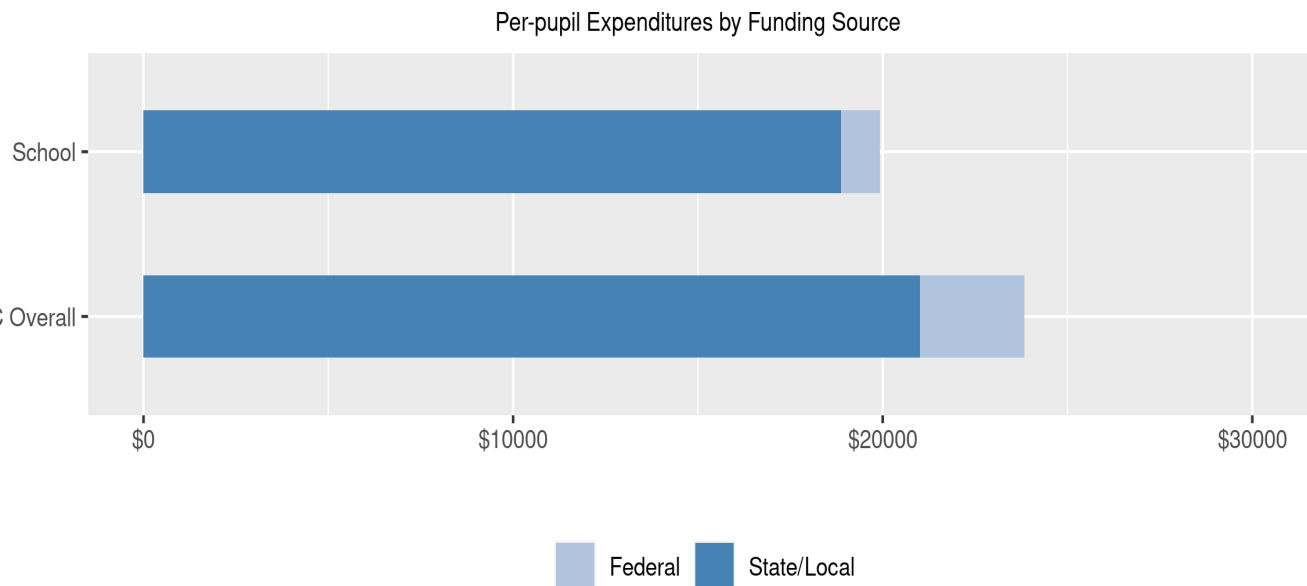
Excluded expenditures include: debt service, capital expenditures, construction and capital improvements, community service operations, and expenditures sourced from private funds (such as parent fees and corporate or charitable donations.) These are not included in the per-pupil expenditure calculation because they are considered outside of the day-to-day operation of the school.

**2021 Total Expenditures \$10,941,464**

The sum of total school and excluded expenditures is the total amount of money the LEA spent for the fiscal year.

### Per-pupil Expenditures by Funding Source

Details are provided about the funding sources for per-pupil expenditures. State/local sources represent revenue received directly from DC, including local grants and per-pupil funding. Federal sources include federal revenue, such as Title I funds and IDEA funding. Per-pupil expenditures are displayed compared to the LEA and DC average.



	State/Local	Federal	Total
School	\$18,871 94.75%	\$1,045 5.25%	\$19,916
DC Overall	\$21,002 88.14%	\$2,827 11.86%	\$23,828