

Message from the School

Our mission is to prepare students to succeed in college and actively engage in our democratic society. We have a proven track record for success with more than sixteen graduating classes boasting 100% college acceptance. More than 80% of the class of 2018 went on to enroll in college within one year of graduation.



2427 MARTIN LUTHER KING JR AVENUE SE, Washington, DC 20020

Ward 8

(202) 563-6862

School Instructional Hours

Monday:	08:45AM - 03:30PM
Tuesday:	08:45AM - 04:00PM
Wednesday:	08:45AM - 03:30PM
Thursday:	08:45AM - 03:30PM
Friday:	08:45AM - 03:30PM

Total Students (2020-21 Ever-Enrolled): 367

Total Teachers: 38

Total School Leaders: 7

Grades Served: 9, 10, 11, 12

Principal: Abdullah Zaki II

Title-I Status: Yes

Local Education Agency (LEA): Thurgood Marshall Academy PCS

School Uniforms Required: Yes

Bus Line(s): 90, A9, A42, A46, A48, B2, P6, U2, W2, W3, W8

Metro Line(s): Anacostia

Before Care Offered: No

After Care Offered: No

School Program Information

Advanced Placement
Dual College
Enrollment
Extended day
Interscholastic Sports
Restorative Justice Program

Parent Organization

Parent Organization Offered: Yes

Parent Organization Contact: Nadly Julien
(njulien@tmapchs.org)

Parent Organization Website: Not Provided

Extracurricular & Enrichment Activities

Law programming
Debate
Athletics
Robotics
Art/Music
Mentoring/Tutoring

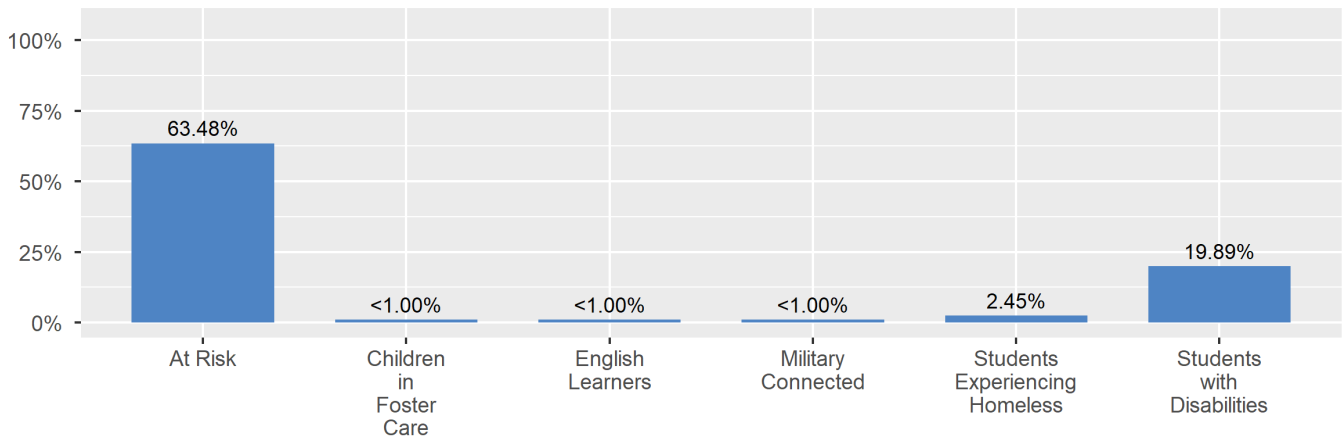
School Enrollment

The ever-enrolled count is the total number of students who are enrolled at any point during the school year; a student who attends a school for one day or 180 days is counted the same way. For this reason, the ever-enrolled count will always be larger than the audit count.

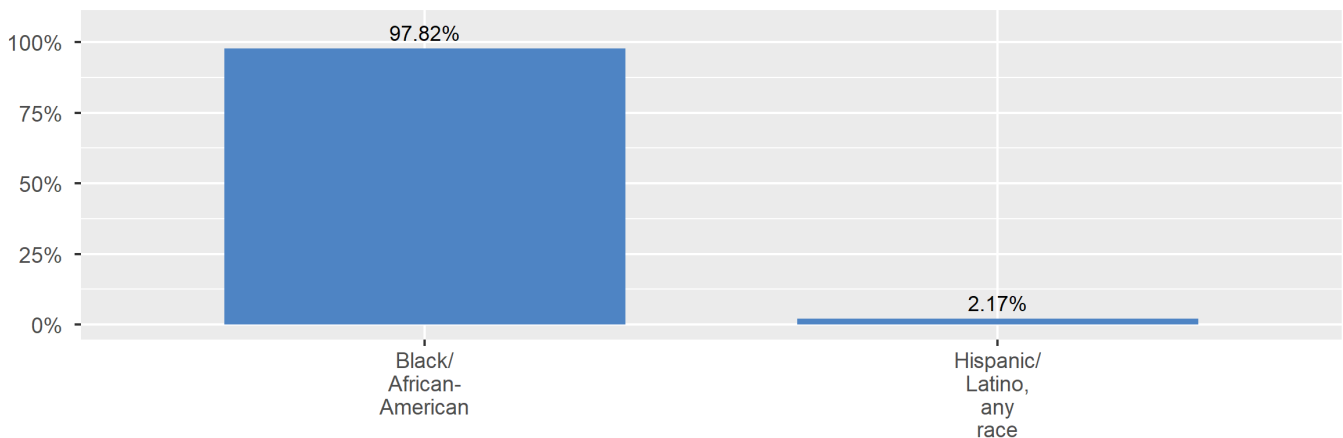
2020-21 Ever-Enrolled by Grade Level

Grade 09	Grade 10	Grade 11	Grade 12
99	96	93	79

Enrollment by Student Group



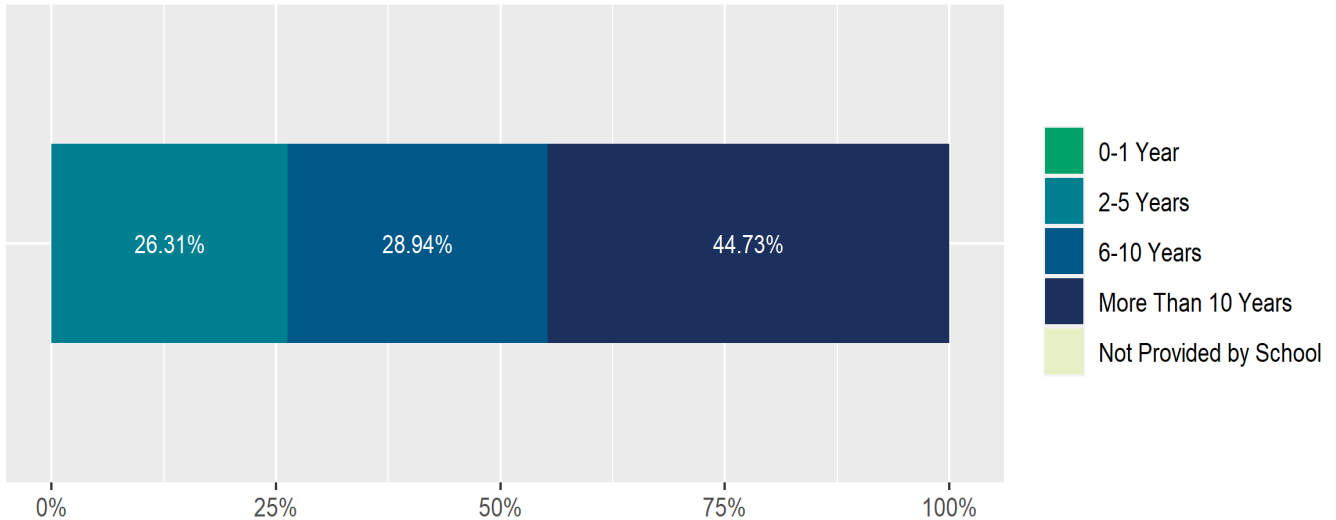
Enrollment by Race/Ethnicity



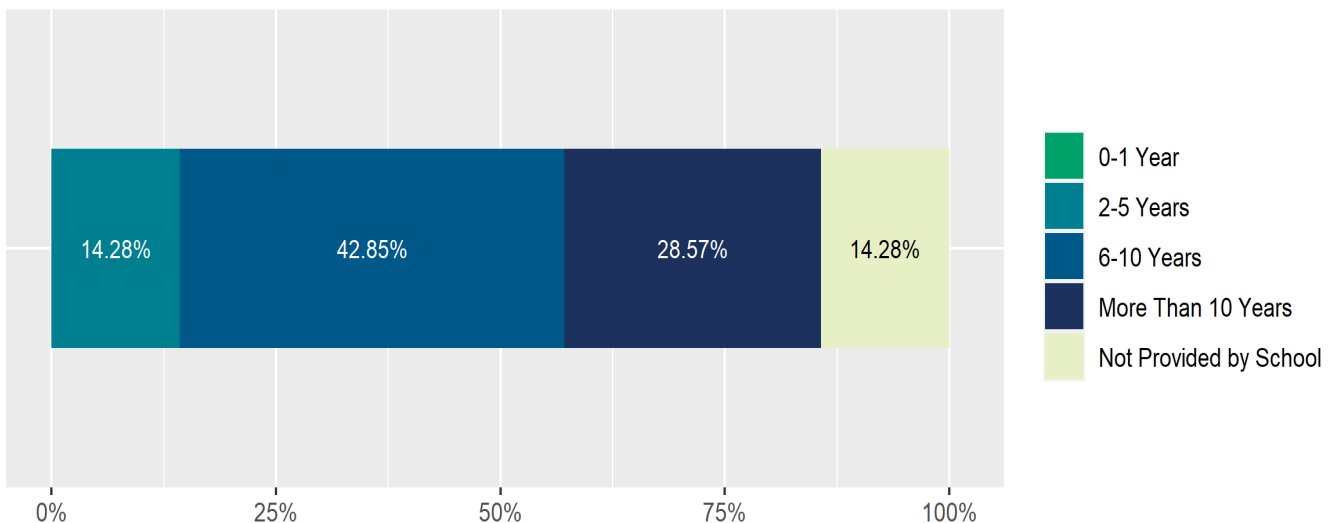
Teacher and School Leader Data

This page includes information about teacher experience levels in DC Public Schools and public charter schools. For DC Public Schools, it also includes information about credentialed and in-field teachers.

Teacher - Years of Experience



School Leader - Years of Experience



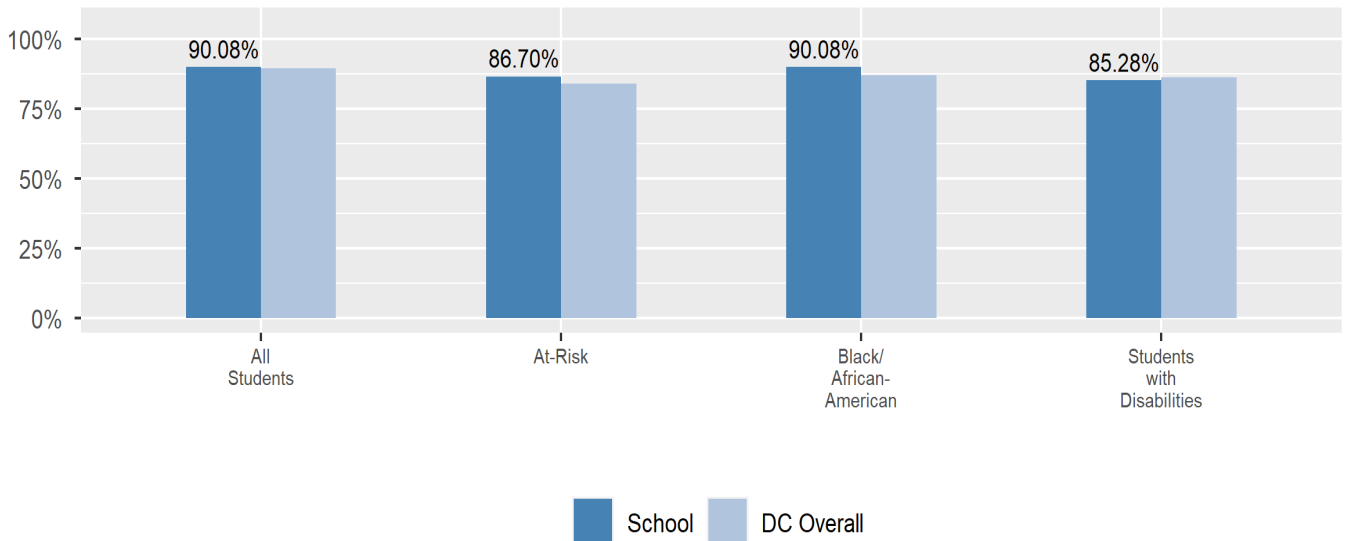
School Safety and Discipline

Information about discipline and school safety in DC, in accordance with the U.S. Department of Education's Civil Rights Data collection, including suspensions and expulsions for students, school related arrests, reported incidents of violence, bullying, and harassment are available in the OSSE Discipline report and data files (<https://osse.dc.gov/page/data-and-reports-0>).

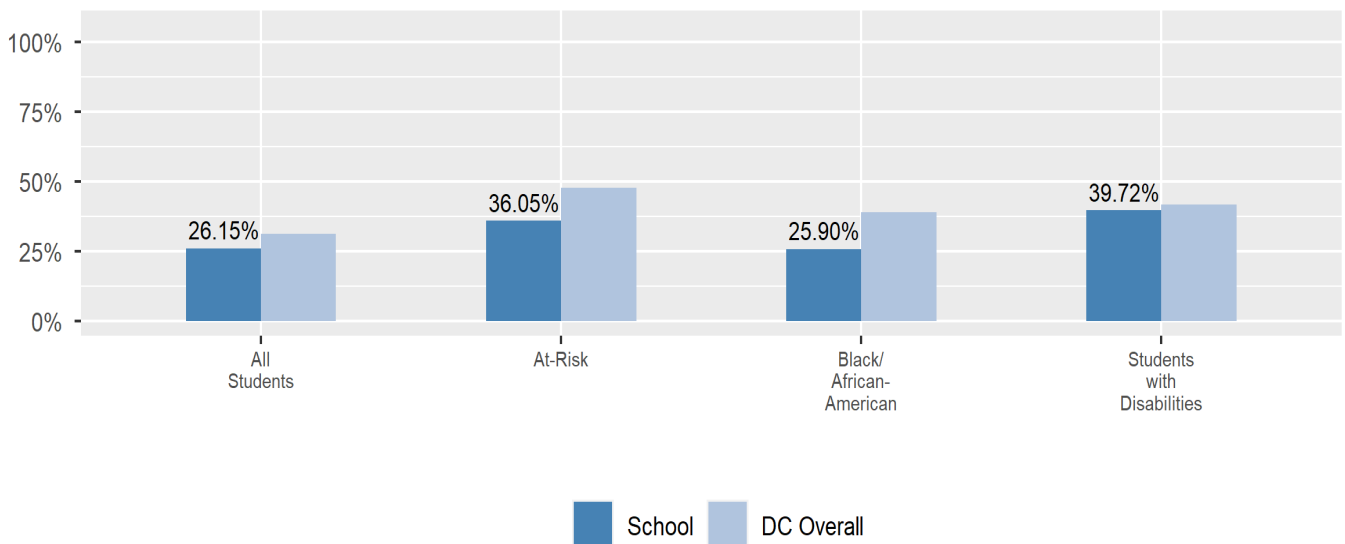
Attendance

Review information on attendance below, including in-seat attendance for all students (there is a separate measure of attendance for pre-K students, since pre-K is not compulsory), and the percentage of students chronically absent, meaning that they miss at least 10% of the school days for which they are enrolled throughout the school year at the school. Note: Due to variations in schools schedules, attendance data may have been collected differently by schools on synchronous and asynchronous learning days. As a result attendance data is unique to this school year and not necessarily comparable to prior years.

In-Seat Attendance



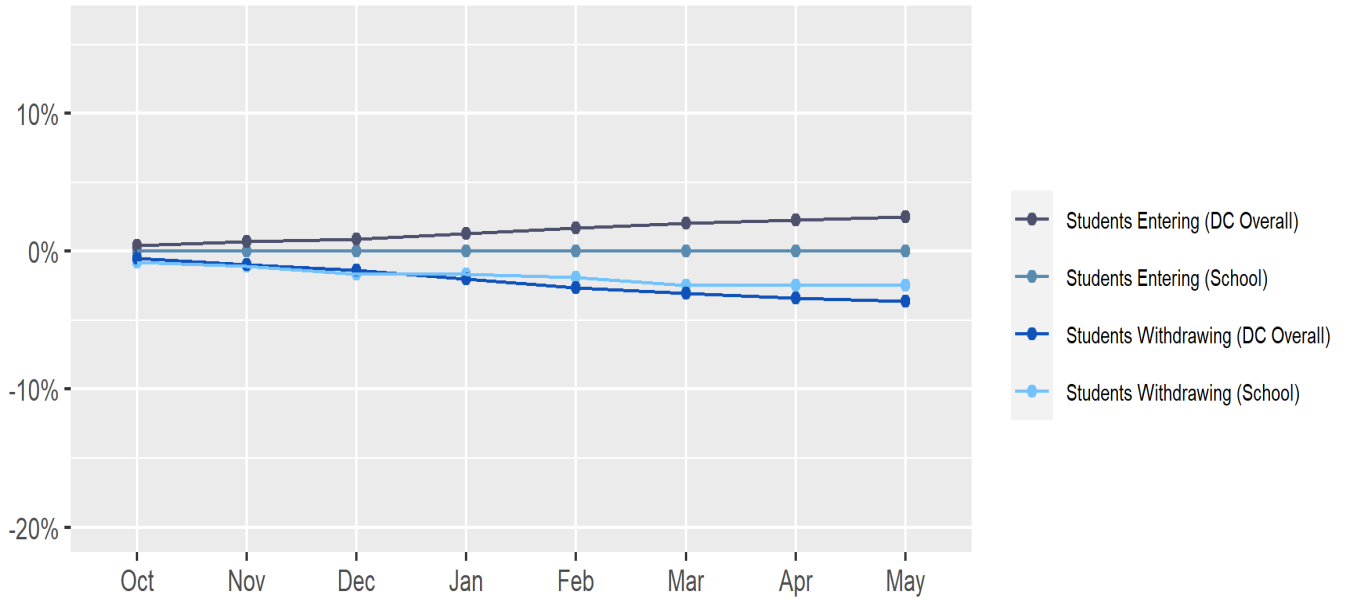
Chronic Absenteeism



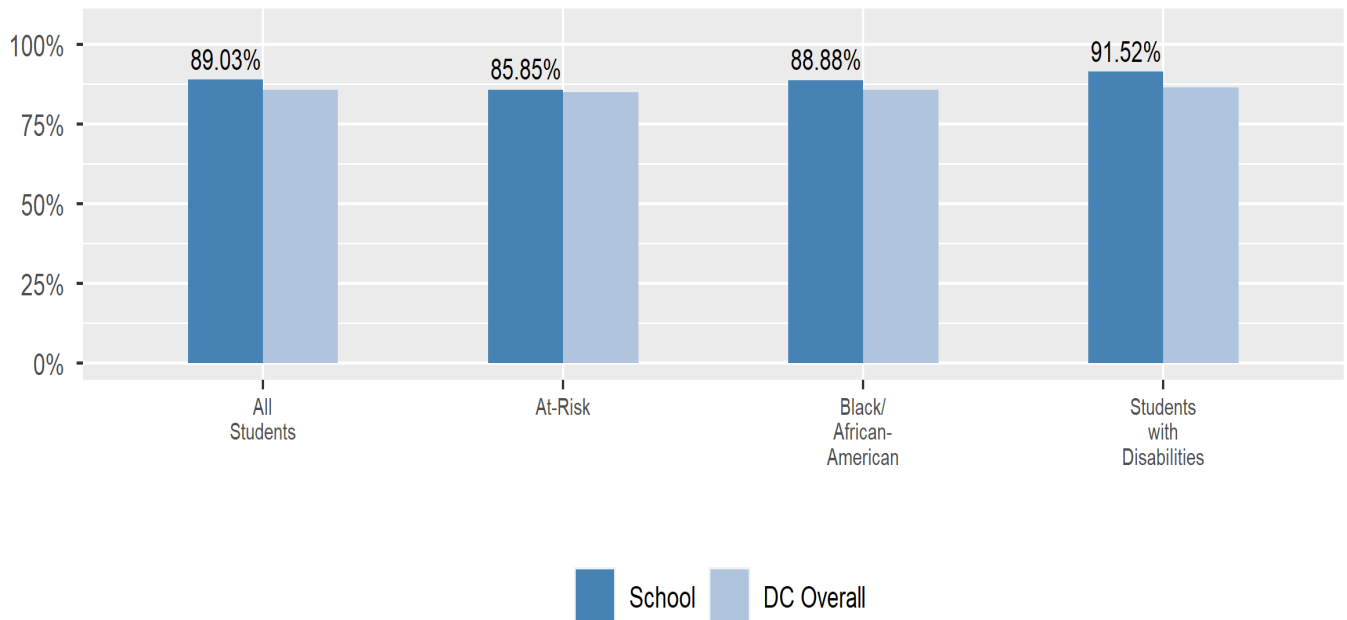
Student Enrollment Changes

Explore information on how much the population at the school changes throughout the year or from year to year. It shows information about changes in enrollment, including whether students leave or enter the school mid-year, and whether eligible students choose to re-enroll in the school.

Mobility



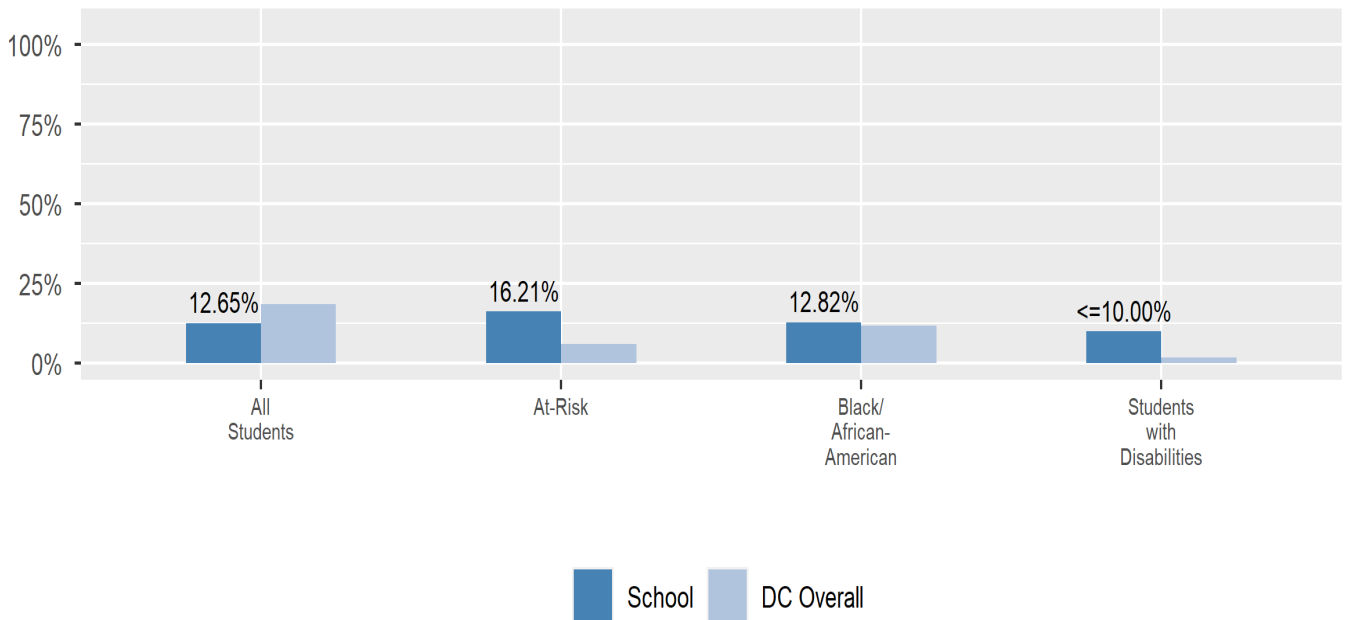
Re-Enrollment



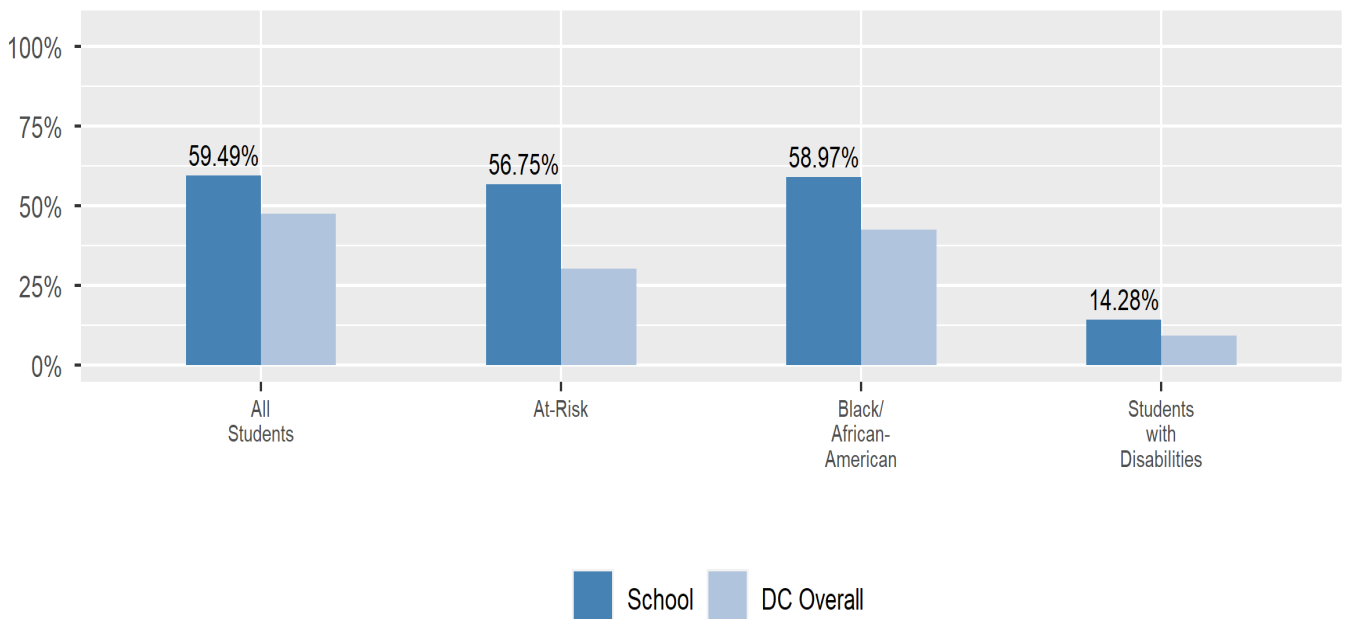
College and Career Readiness

This section shows whether students at this school are participating in college and career readiness opportunities, such as Advanced Placement (AP) or International Baccalaureate (IB) exams, and how they are performing on these and on the SAT.

SAT College and Career Ready Benchmark

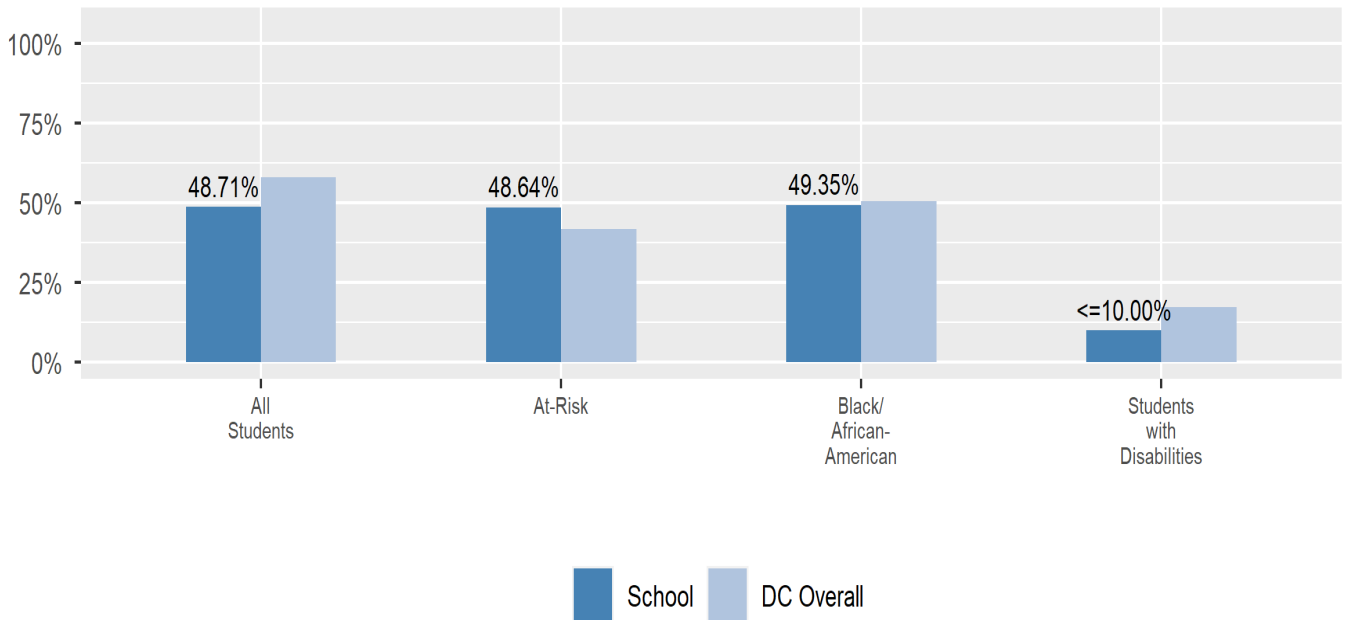


SAT DC Percentile

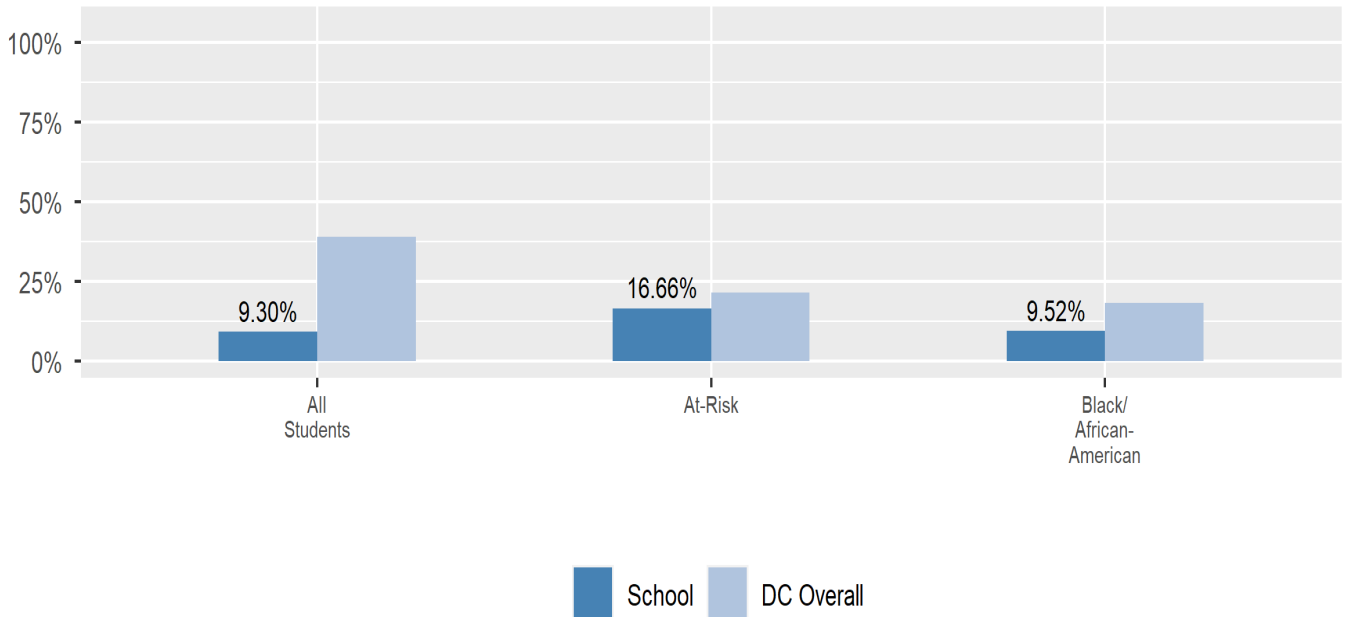


College and Career Readiness (cont.)

AP/IB Participation

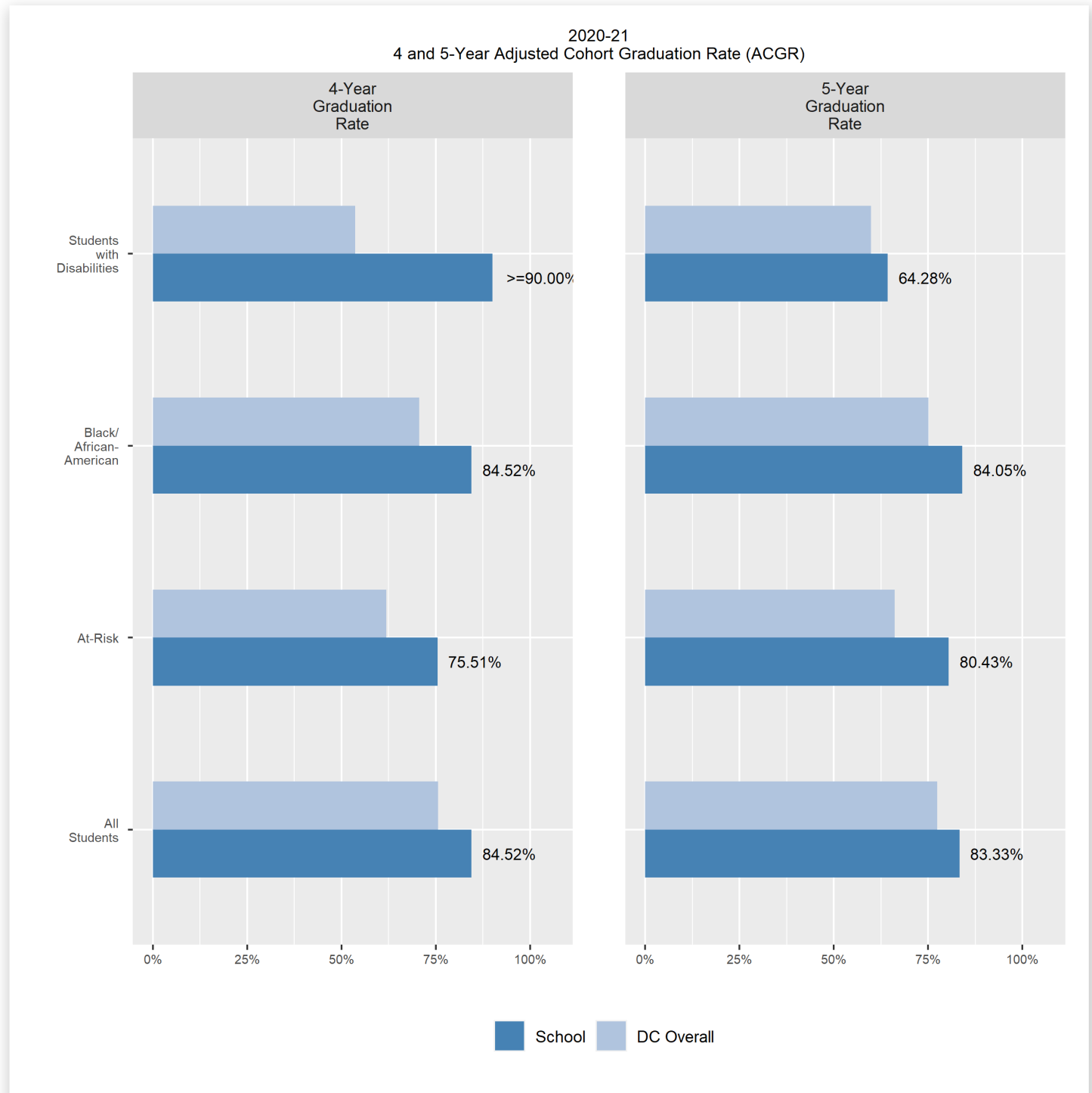


AP/IB Performance



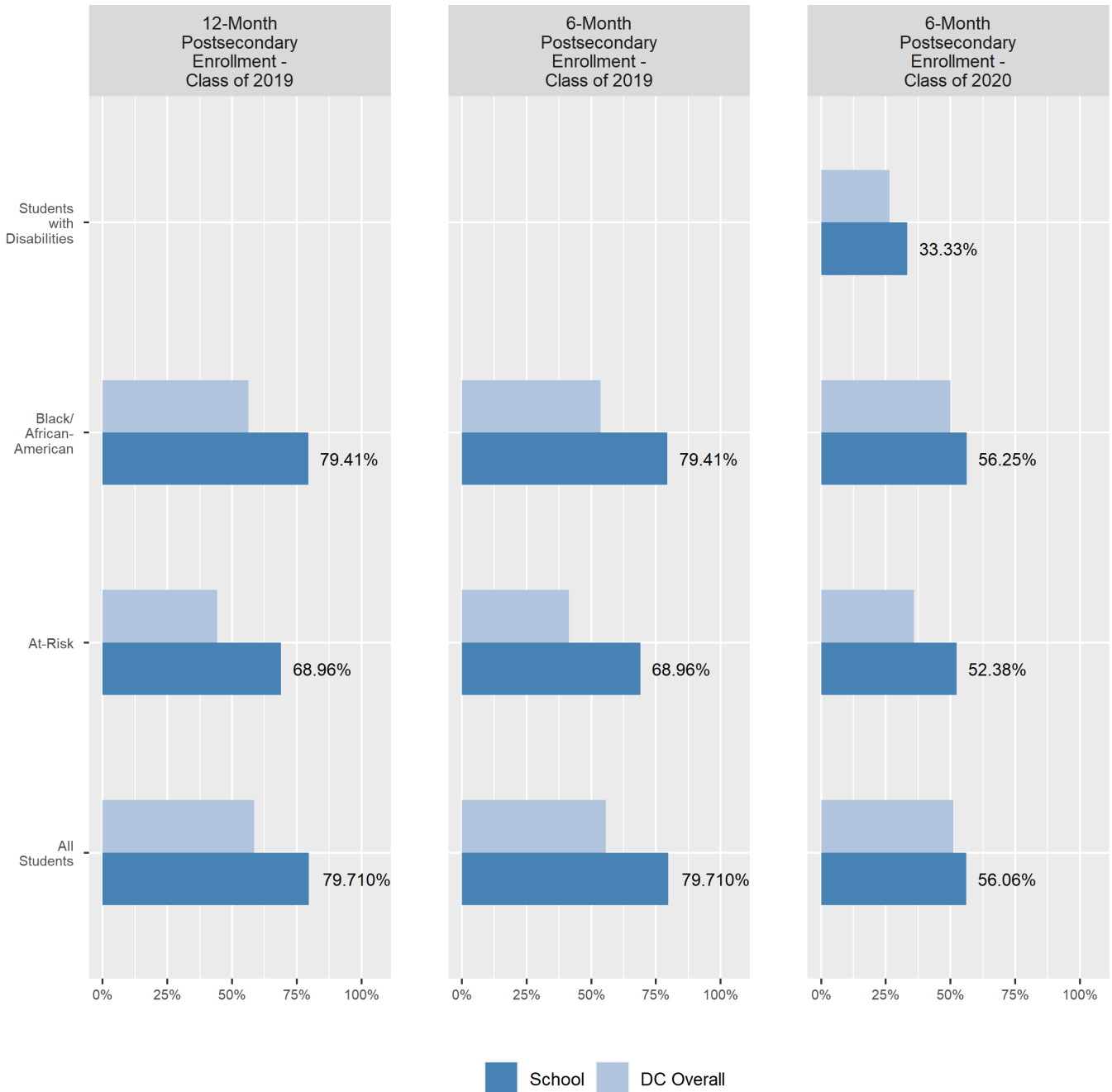
Graduation Rates

This page includes two high school graduation measures: The percentage of students in the school who graduate in 4 years and the percentage of students in the school who graduate in 5 years.



College Enrollment Rates

The percentage of high school graduates from the class of 2019 and 2020 who enrolled in a post-secondary degree-granting institution within 6 months and within 12 months following graduation.



Finance

Per-pupil expenditures represent the average amount of money spent on educating each student. In other words, this value represents the total amount of actual school expenditures divided by the number of students in the school.

2021 Per-pupil Expenditures

Per-pupil expenditure amount is calculated by dividing the total school expenditures by the October enrollment audit count of public school students.

Per-pupil: \$23,214

October Enrollment Audit Count: 367

Total School Expenditures: \$8,519,607

Total Excluded Expenditures: \$1,999,309

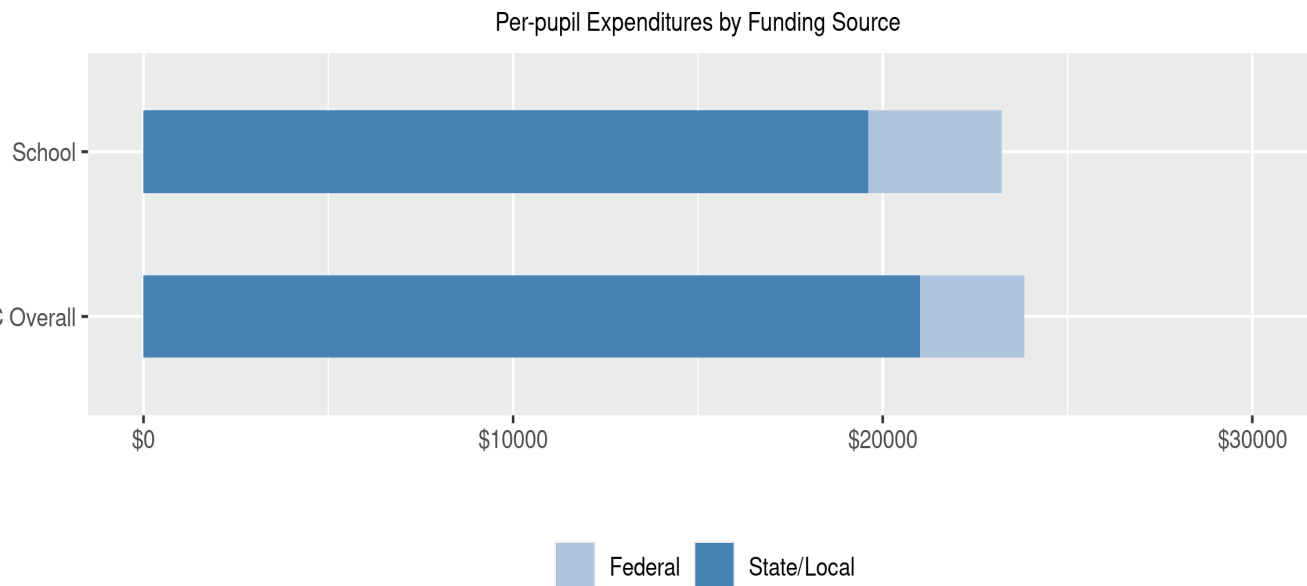
Excluded expenditures include: debt service, capital expenditures, construction and capital improvements, community service operations, and expenditures sourced from private funds (such as parent fees and corporate or charitable donations.) These are not included in the per-pupil expenditure calculation because they are considered outside of the day-to-day operation of the school.

2021 Total Expenditures \$10,518,916

The sum of total school and excluded expenditures is the total amount of money the LEA spent for the fiscal year.

Per-pupil Expenditures by Funding Source

Details are provided about the funding sources for per-pupil expenditures. State/local sources represent revenue received directly from DC, including local grants and per-pupil funding. Federal sources include federal revenue, such as Title I funds and IDEA funding. Per-pupil expenditures are displayed compared to the LEA and DC average.



	State/Local	Federal	Total
School	\$19,610 84.47%	\$3,604 15.53%	\$23,214
DC Overall	\$21,002 88.14%	\$2,827 11.86%	\$23,828