

Message from the School

Grounded in the values belong and learn, KIPP DC Quest Academy prepares students for future academic success with motivating and collaborative learning environments. Our team of teachers fosters academic and personal growth in each of their students, inspiring them to set high expectations for themselves. Upon completion of fourth grade, Quest Academy students move onto KIPP DC Valor Academy.



📍 5300 BLAINE STREET NE, Washington, DC 20019

🏠 Ward 7

☎ (202) 398-6811

School Instructional Hours

Monday: 08:00AM - 04:00PM

Tuesday: 08:00AM - 04:00PM

Wednesday: 08:00AM - 04:00PM

Thursday: 08:00AM - 04:00PM

Friday: 08:00AM - 04:00PM

Total Students (2020-21 Ever-Enrolled): 413

Total Teachers: 47

Total School Leaders: 9

Grades Served: 1, 2, 3, 4

Principal: Allison Artis

Title-I Status: Yes

Local Education Agency (LEA): KIPP DC PCS

School Uniforms Required: Yes

Bus Line(s): 96, 97, U5, U6, W4

Metro Line(s): Benning Rd; Capitol Heights

Before Care Offered: Yes

◦ **Cost:** Sliding Scale

After Care Offered: Yes

◦ **Cost:** Sliding Scale

School Program Information

Blended Learning

Extended day

Extended Year

Parent Organization

Parent Organization Offered: Yes

Parent Organization Contact: Brandon Best
(brandon.best@kipppdc.org)

Parent Organization Website: Not Provided

Extracurricular & Enrichment Activities

The Fishing School

Pretty Brown Girl

Girls on the Run

DC Scores

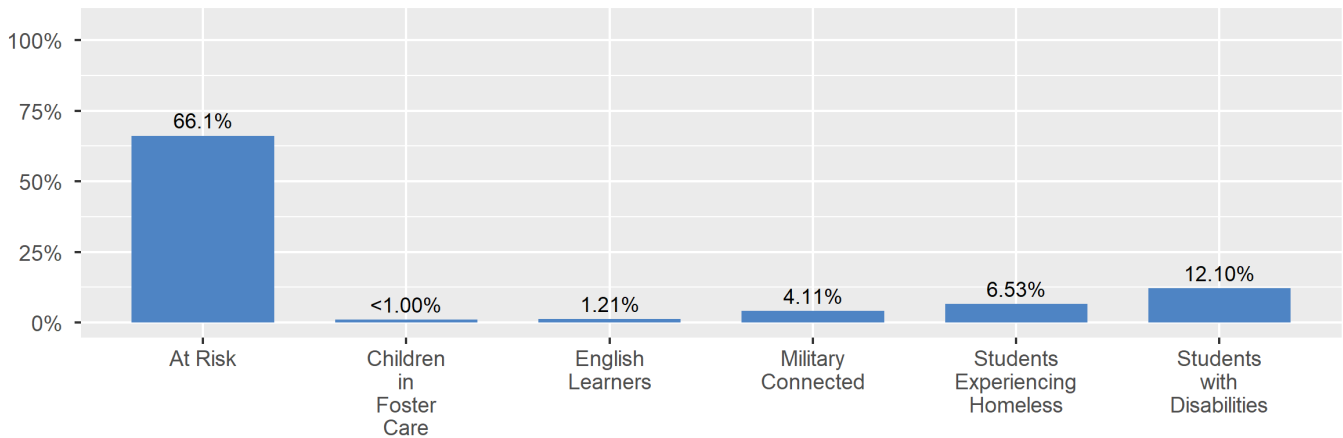
School Enrollment

The ever-enrolled count is the total number of students who are enrolled at any point during the school year; a student who attends a school for one day or 180 days is counted the same way. For this reason, the ever-enrolled count will always be larger than the audit count.

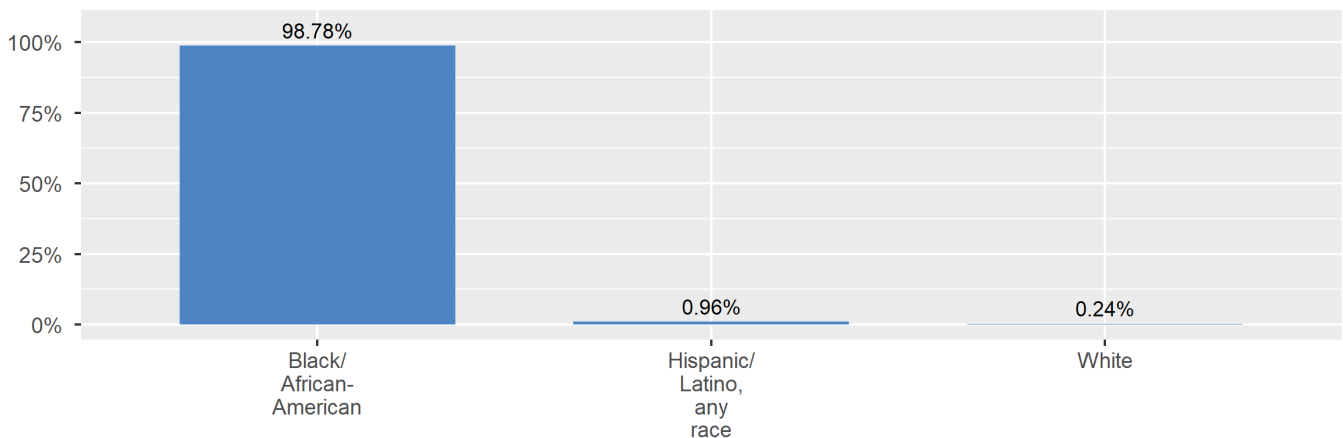
2020-21 Ever-Enrolled by Grade Level

Grade 01	Grade 02	Grade 03	Grade 04
104	107	99	103

Enrollment by Student Group



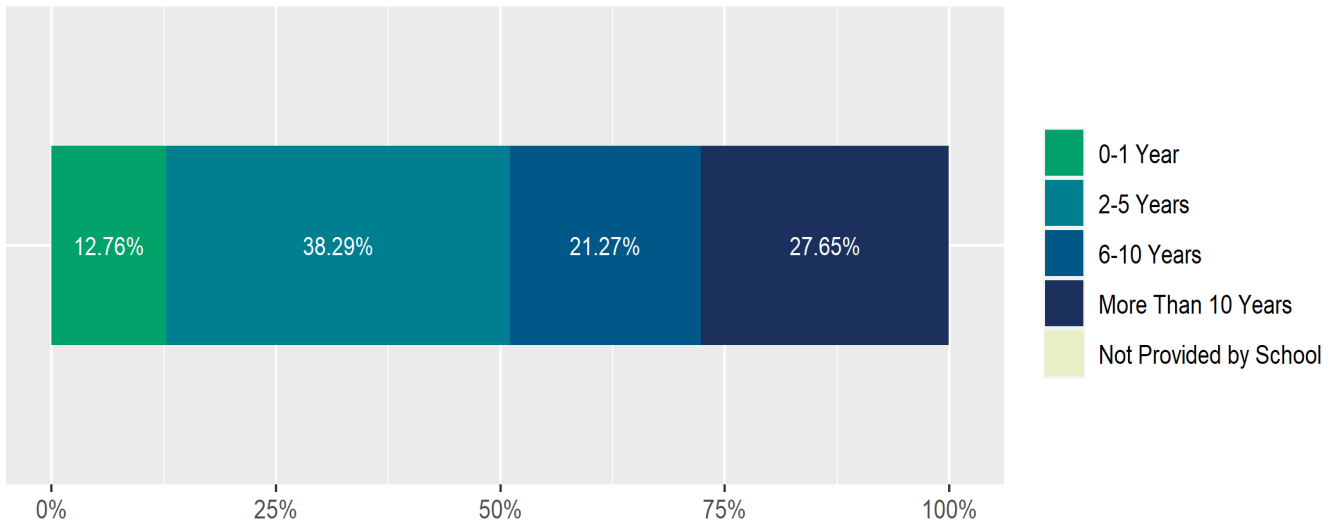
Enrollment by Race/Ethnicity



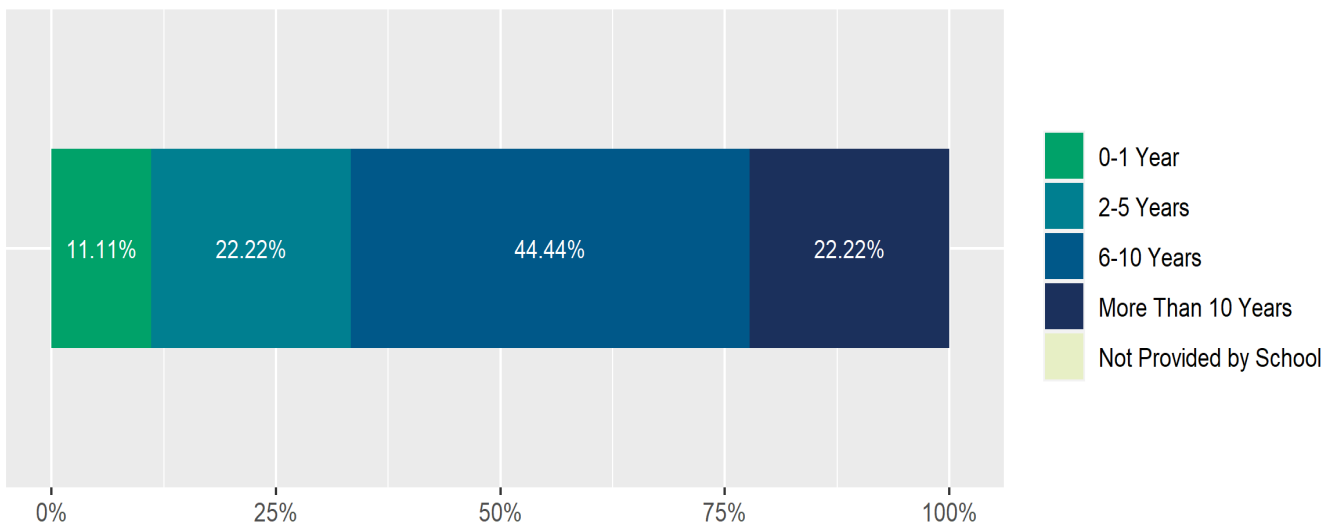
Teacher and School Leader Data

This page includes information about teacher experience levels in DC Public Schools and public charter schools. For DC Public Schools, it also includes information about credentialed and in-field teachers.

Teacher - Years of Experience



School Leader - Years of Experience



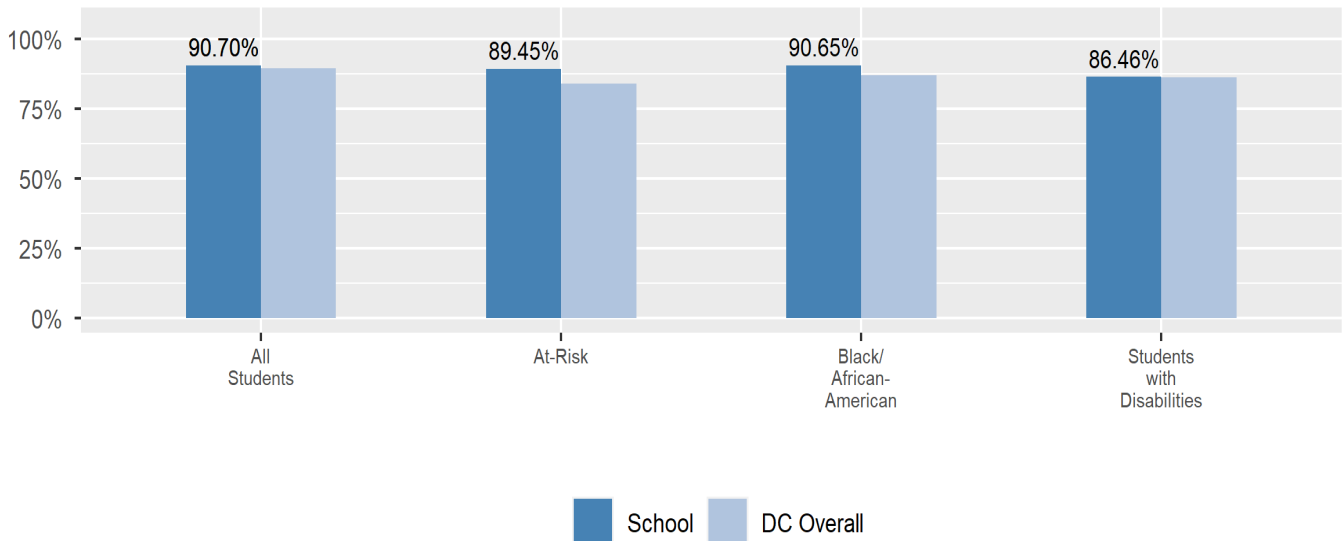
School Safety and Discipline

Information about discipline and school safety in DC, in accordance with the U.S. Department of Education's Civil Rights Data collection, including suspensions and expulsions for students, school related arrests, reported incidents of violence, bullying, and harassment are available in the OSSE Discipline report and data files (<https://osse.dc.gov/page/data-and-reports-0>).

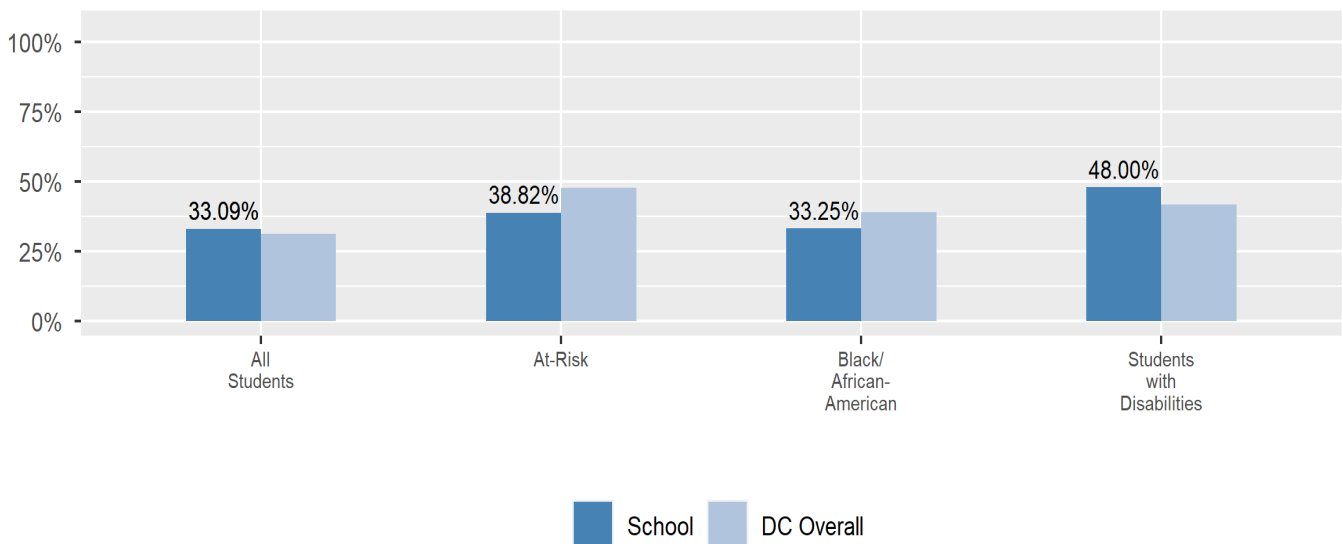
Attendance

Review information on attendance below, including in-seat attendance for all students (there is a separate measure of attendance for pre-K students, since pre-K is not compulsory), and the percentage of students chronically absent, meaning that they miss at least 10% of the school days for which they are enrolled throughout the school year at the school. Note: Due to variations in schools schedules, attendance data may have been collected differently by schools on synchronous and asynchronous learning days. As a result attendance data is unique to this school year and not necessarily comparable to prior years.

In-Seat Attendance



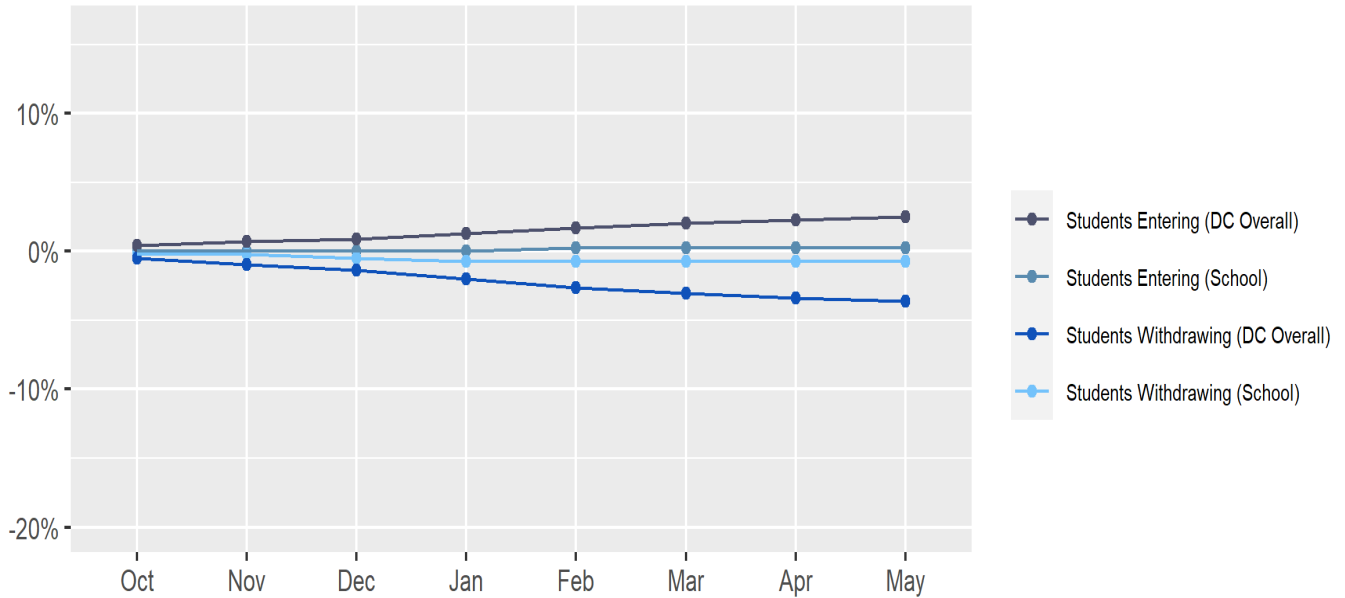
Chronic Absenteeism



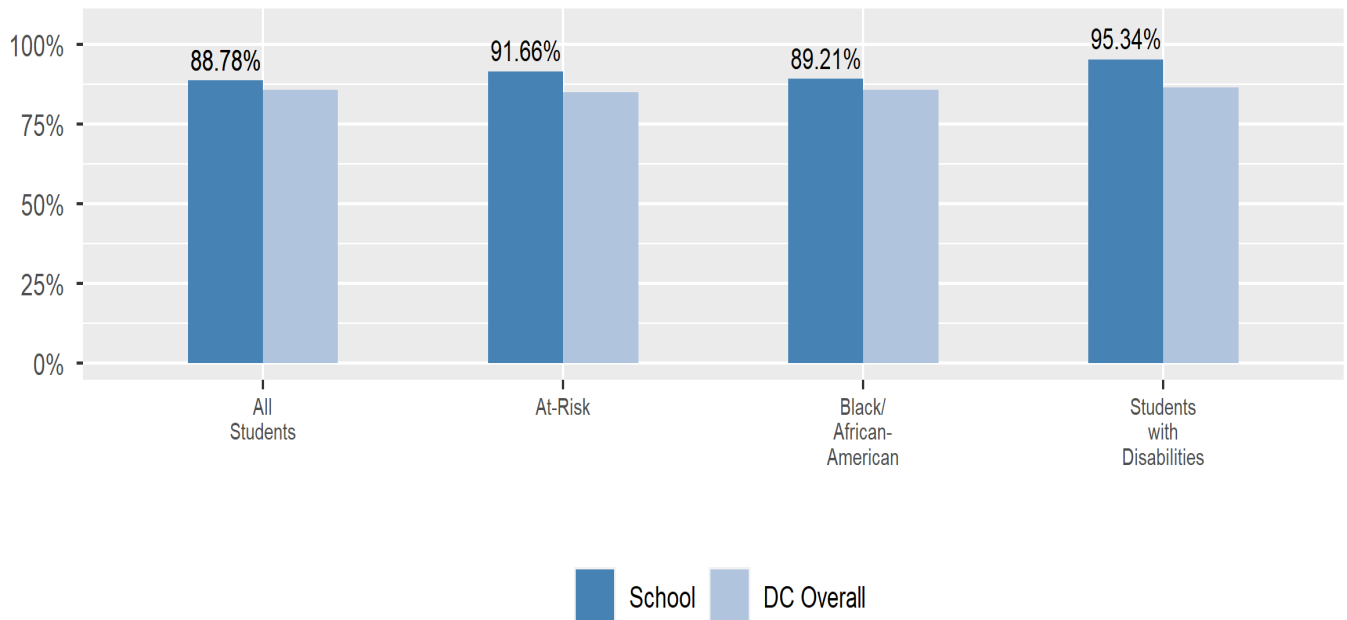
Student Enrollment Changes

Explore information on how much the population at the school changes throughout the year or from year to year. It shows information about changes in enrollment, including whether students leave or enter the school mid-year, and whether eligible students choose to re-enroll in the school.

Mobility



Re-Enrollment



Finance

Per-pupil expenditures represent the average amount of money spent on educating each student. In other words, this value represents the total amount of actual school expenditures divided by the number of students in the school.

2021 Per-pupil Expenditures

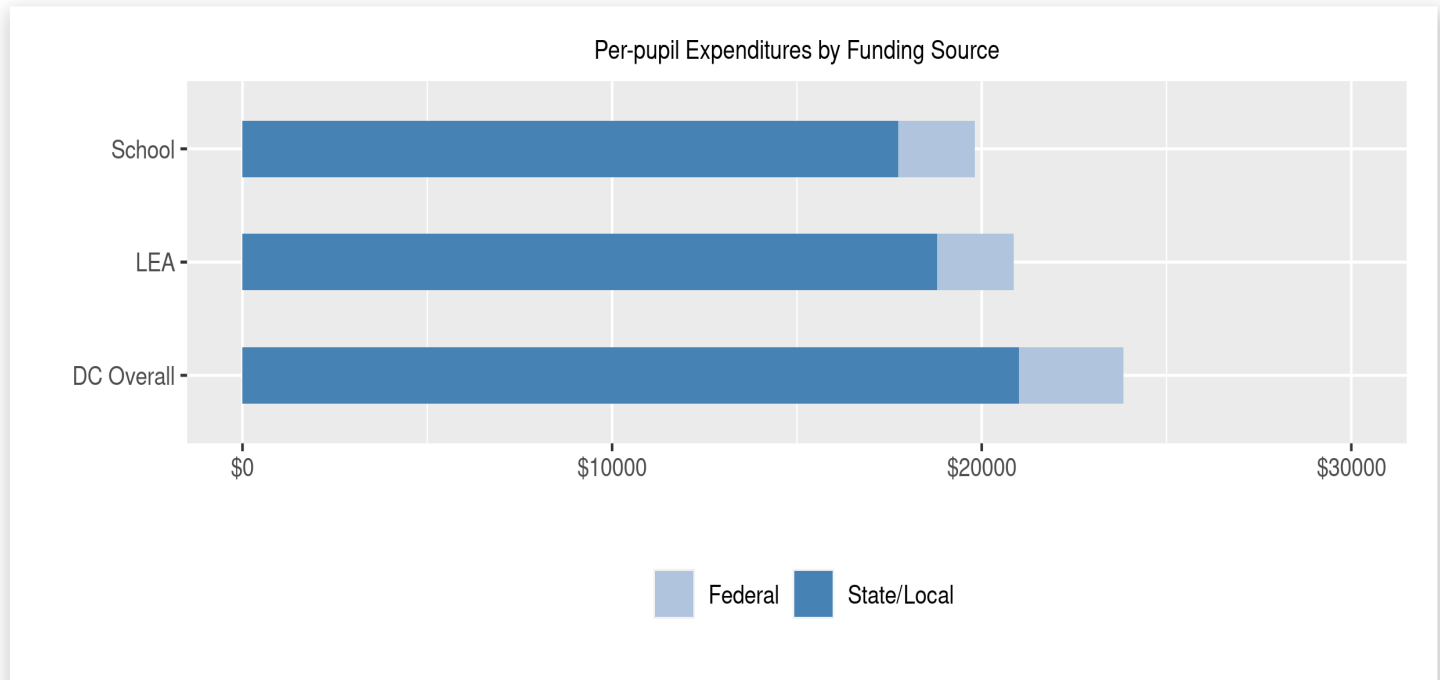
Per-pupil expenditure amount is calculated by dividing the total school expenditures by the October enrollment audit count of public school students.

Per-pupil: \$19,818

October Enrollment Audit Count: 410

Per-pupil Expenditures by Funding Source

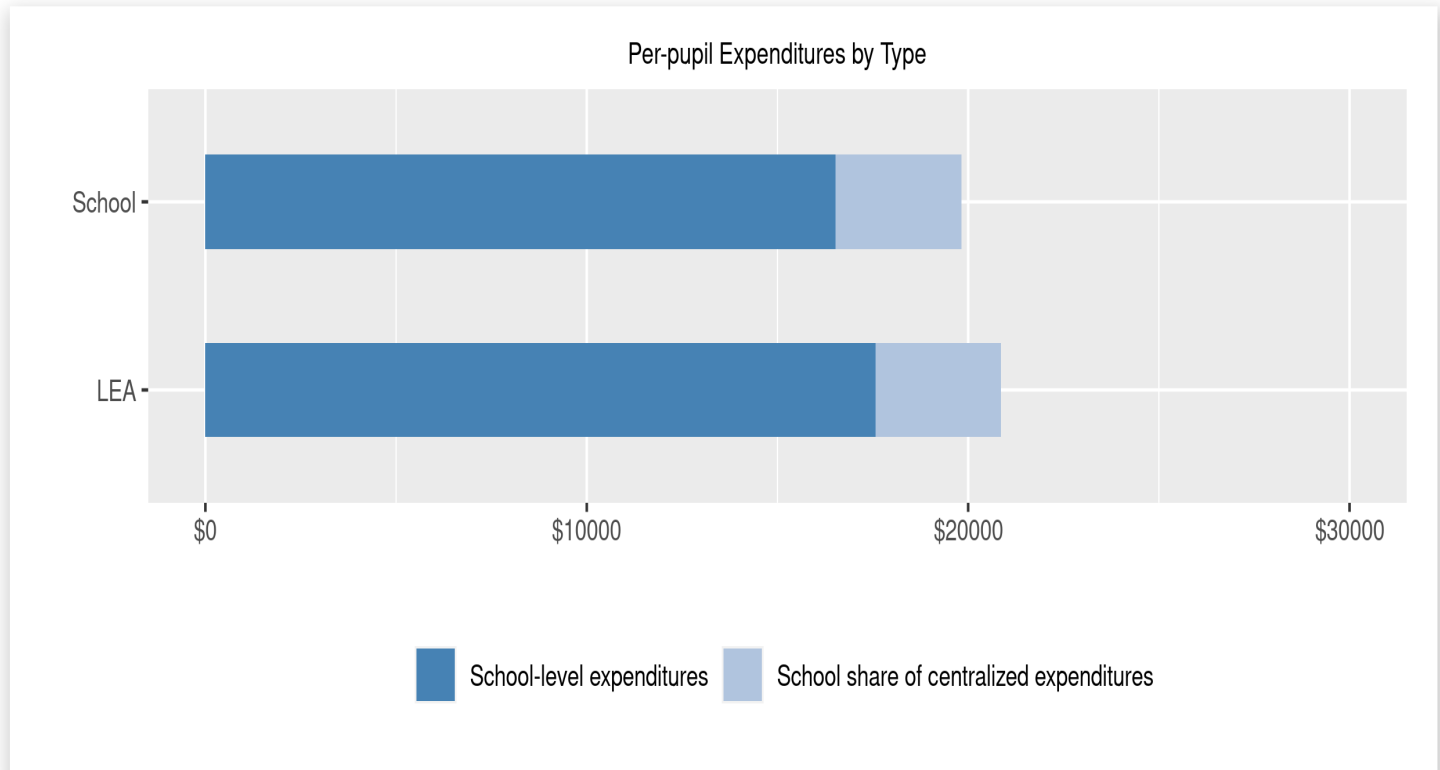
Details are provided about the funding sources for per-pupil expenditures. State/local sources represent revenue received directly from DC, including local grants and per-pupil funding. Federal sources include federal revenue, such as Title I funds and IDEA funding. Per-pupil expenditures are displayed compared to the LEA and DC average.



	State/Local	Federal	Total
School	\$17,742 89.52%	\$2,077 10.48%	\$19,818
LEA	\$18,788 90.05%	\$2,077 9.95%	\$20,864
DC Overall	\$21,002 88.14%	\$2,827 11.86%	\$23,828

Finance (cont.) - Per-pupil Expenditures by Type

Details are provided about the distribution of expenditures between school-level and centralized. School-level expenditures include spending on teacher and administrative salaries, books, supplies, and business costs. Centralized expenditures include the portion of spending at the LEA's central office that are allocated to the school. (Note: LEAs with only one school site do not report separate centralized expenditures)



	School-level expenditures	School share of centralized expenditures	Total
School	\$16,520 83.36%	\$3,298 16.64%	\$19,818
State/Local	\$16,051	\$1,690	
Federal	\$468	\$1,608	
LEA	\$17,566 84.19%	\$3,298 15.81%	\$20,864
State/Local	\$17,098	\$1,690	
Federal	\$468	\$1,608	