

Message from the School

Rooted in the values of community, identity, and investment, KIPP DC AIM Academy helps students develop the skills necessary to become successful college students, professionals, and change agents for their communities.



2600 DOUGLASS ROAD SE, Washington, DC 20020
 Ward 8
 (202) 678-5477

School Instructional Hours

Monday: 08:00AM - 04:00PM
Tuesday: 08:00AM - 04:00PM
Wednesday: 08:00AM - 04:00PM
Thursday: 08:00AM - 04:00PM
Friday: 08:00AM - 04:00PM

Total Students (2020-21 Ever-Enrolled):
425

Total Teachers: 51

Total School Leaders: 10

Grades Served: 5, 6, 7, 8

Principal: Gaelan Gallagher

Title-I Status: Yes

Local Education Agency (LEA): KIPP
DC PCS

School Uniforms Required: Yes

Bus Line(s): A2, A33, A4, A6, A7, A8, W2, W3, W6, W8, DC
Circulator

Metro Line(s): Anacostia

Before Care Offered: Yes

- **Cost:** Sliding Scale

After Care Offered: Yes

- **Cost:** Sliding Scale

School Program Information

Blended Learning
Extended day
Extended Year
Interscholastic Sports

Parent Organization

Parent Organization Offered: Yes

Parent Organization Contact: Brandon Best
(brandon.best@kipfdc.org)

Parent Organization Website: Not Provided

Extracurricular & Enrichment Activities

DC Scores
Georgetown MedStar
FIRST LEGO League
Girls Who Code

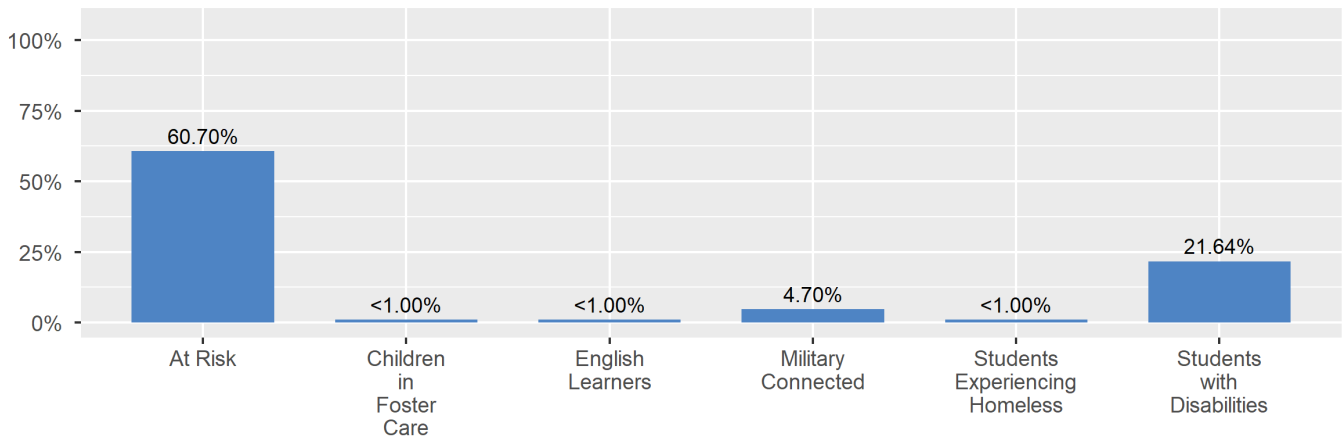
School Enrollment

The ever-enrolled count is the total number of students who are enrolled at any point during the school year; a student who attends a school for one day or 180 days is counted the same way. For this reason, the ever-enrolled count will always be larger than the audit count.

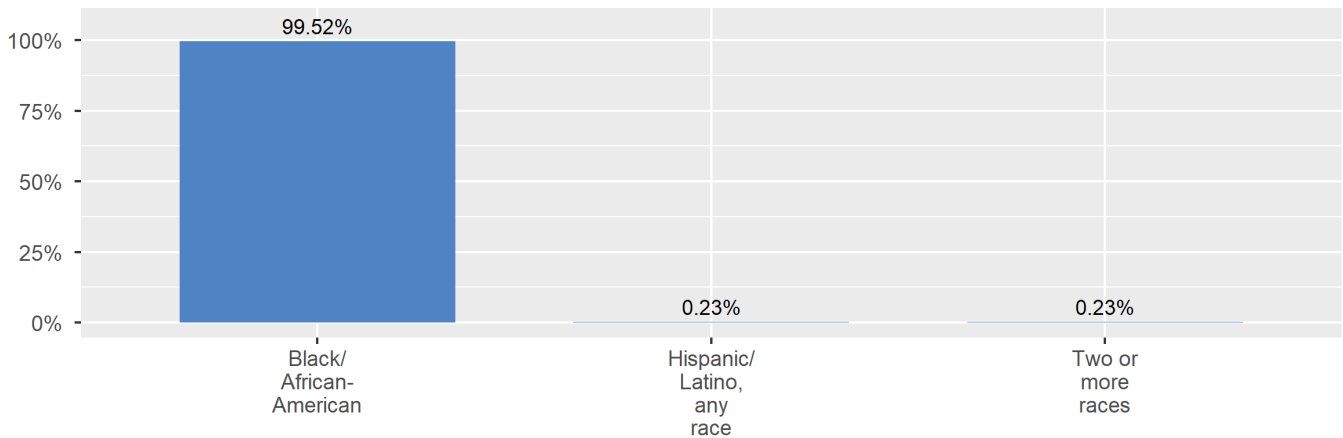
2020-21 Ever-Enrolled by Grade Level

Grade 05	Grade 06	Grade 07	Grade 08
111	112	110	92

Enrollment by Student Group



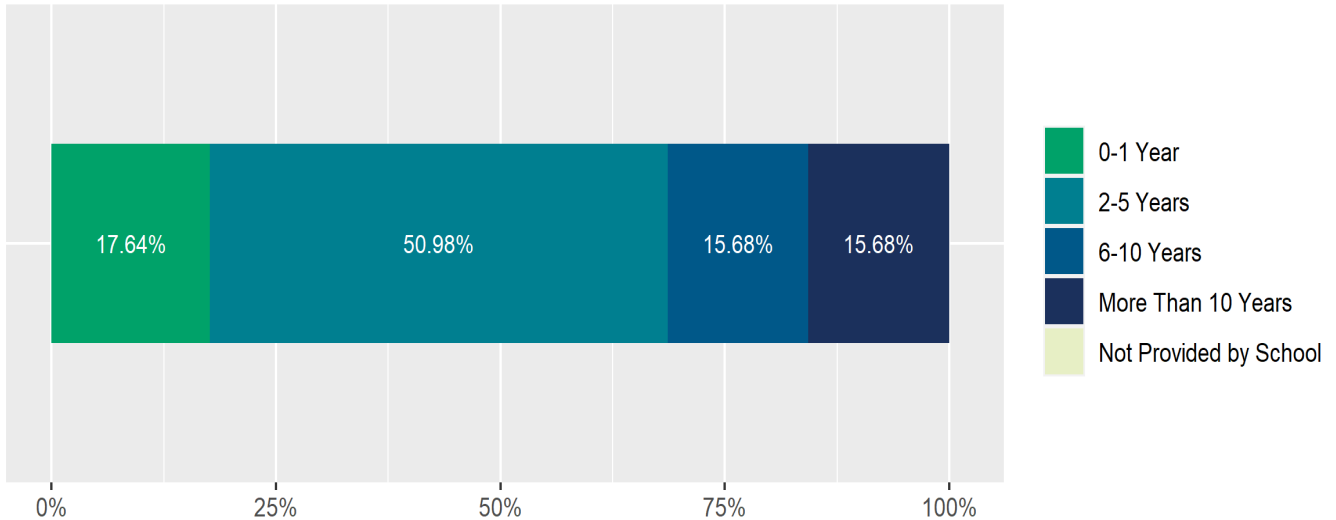
Enrollment by Race/Ethnicity



Teacher and School Leader Data

This page includes information about teacher experience levels in DC Public Schools and public charter schools. For DC Public Schools, it also includes information about credentialed and in-field teachers.

Teacher - Years of Experience



School Leader - Years of Experience



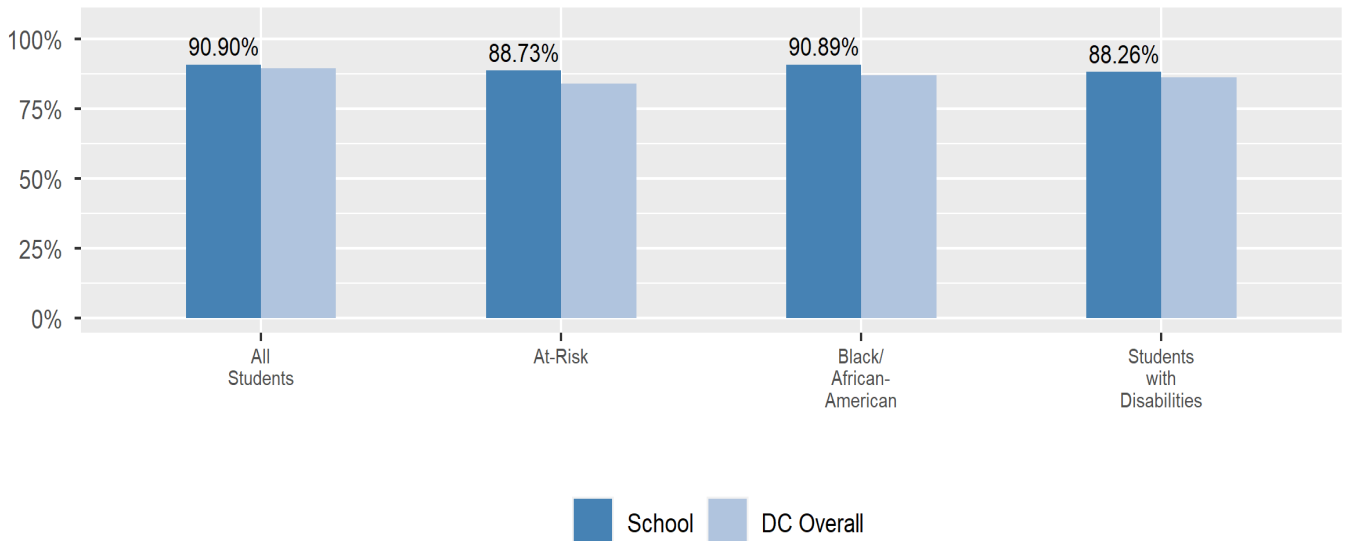
School Safety and Discipline

Information about discipline and school safety in DC, in accordance with the U.S. Department of Education's Civil Rights Data collection, including suspensions and expulsions for students, school related arrests, reported incidents of violence, bullying, and harassment are available in the OSSE Discipline report and data files (<https://osse.dc.gov/page/data-and-reports-0>).

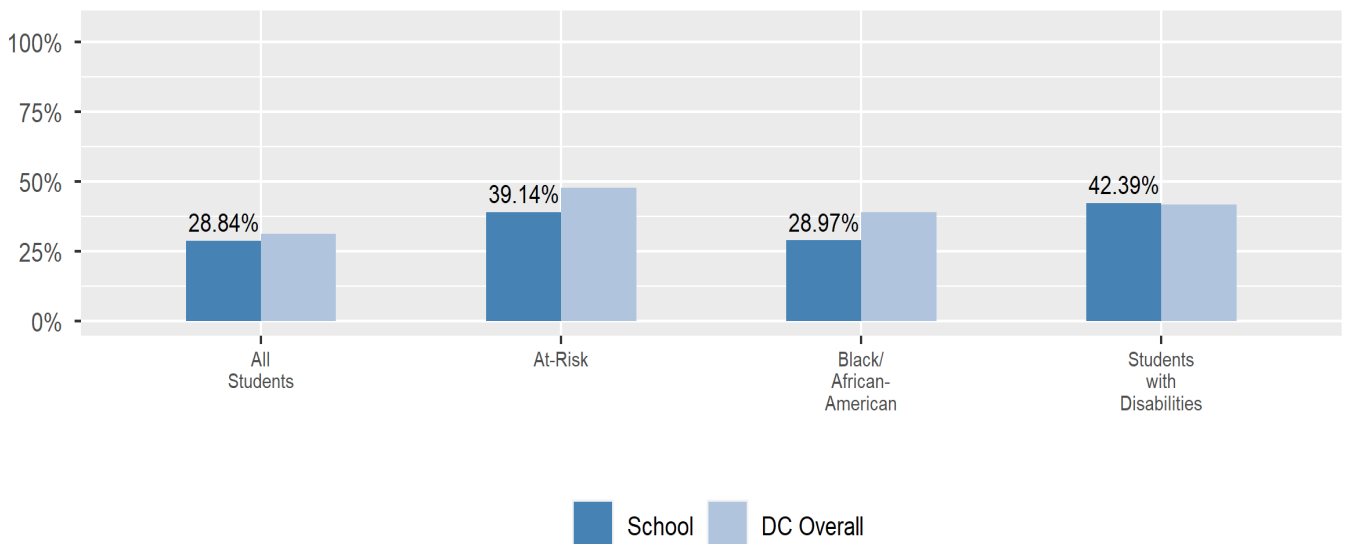
Attendance

Review information on attendance below, including in-seat attendance for all students (there is a separate measure of attendance for pre-K students, since pre-K is not compulsory), and the percentage of students chronically absent, meaning that they miss at least 10% of the school days for which they are enrolled throughout the school year at the school. Note: Due to variations in schools schedules, attendance data may have been collected differently by schools on synchronous and asynchronous learning days. As a result attendance data is unique to this school year and not necessarily comparable to prior years.

In-Seat Attendance



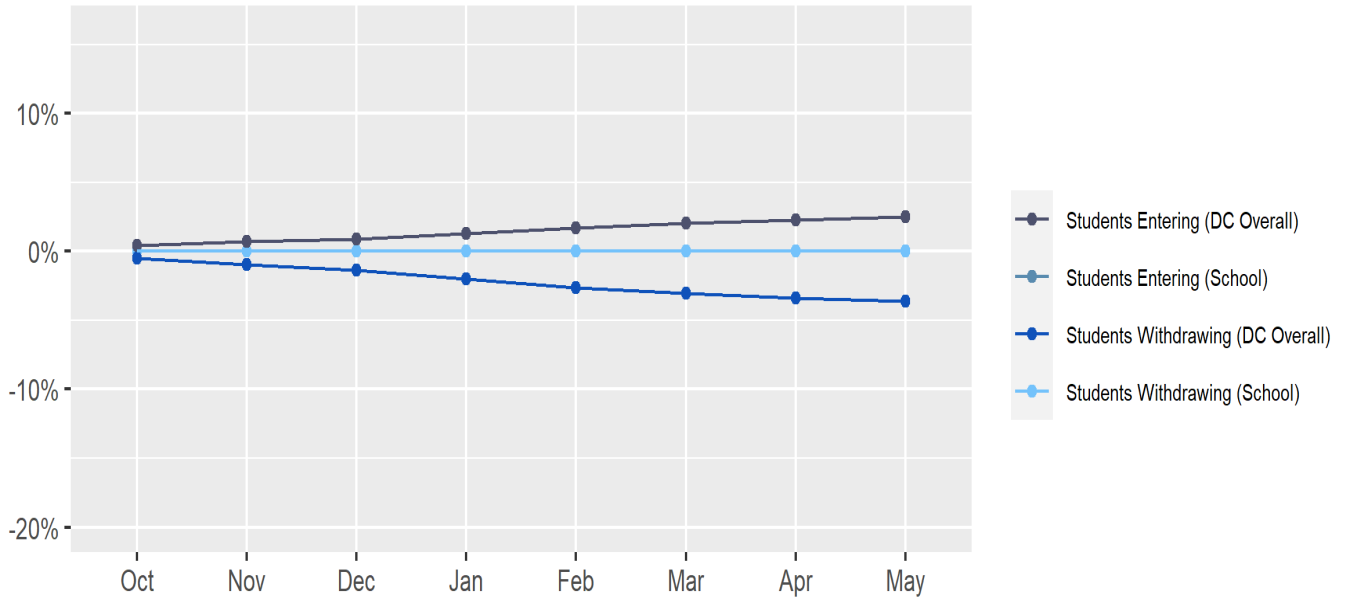
Chronic Absenteeism



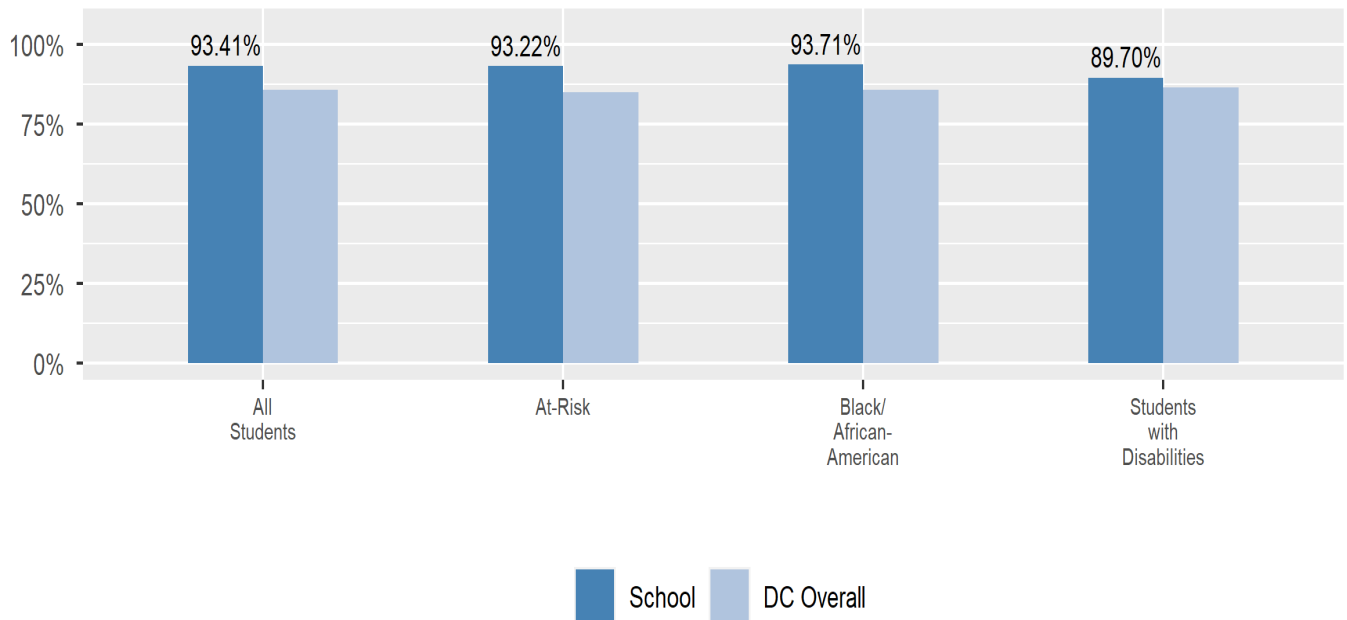
Student Enrollment Changes

Explore information on how much the population at the school changes throughout the year or from year to year. It shows information about changes in enrollment, including whether students leave or enter the school mid-year, and whether eligible students choose to re-enroll in the school.

Mobility



Re-Enrollment



Finance

Per-pupil expenditures represent the average amount of money spent on educating each student. In other words, this value represents the total amount of actual school expenditures divided by the number of students in the school.

2021 Per-pupil Expenditures

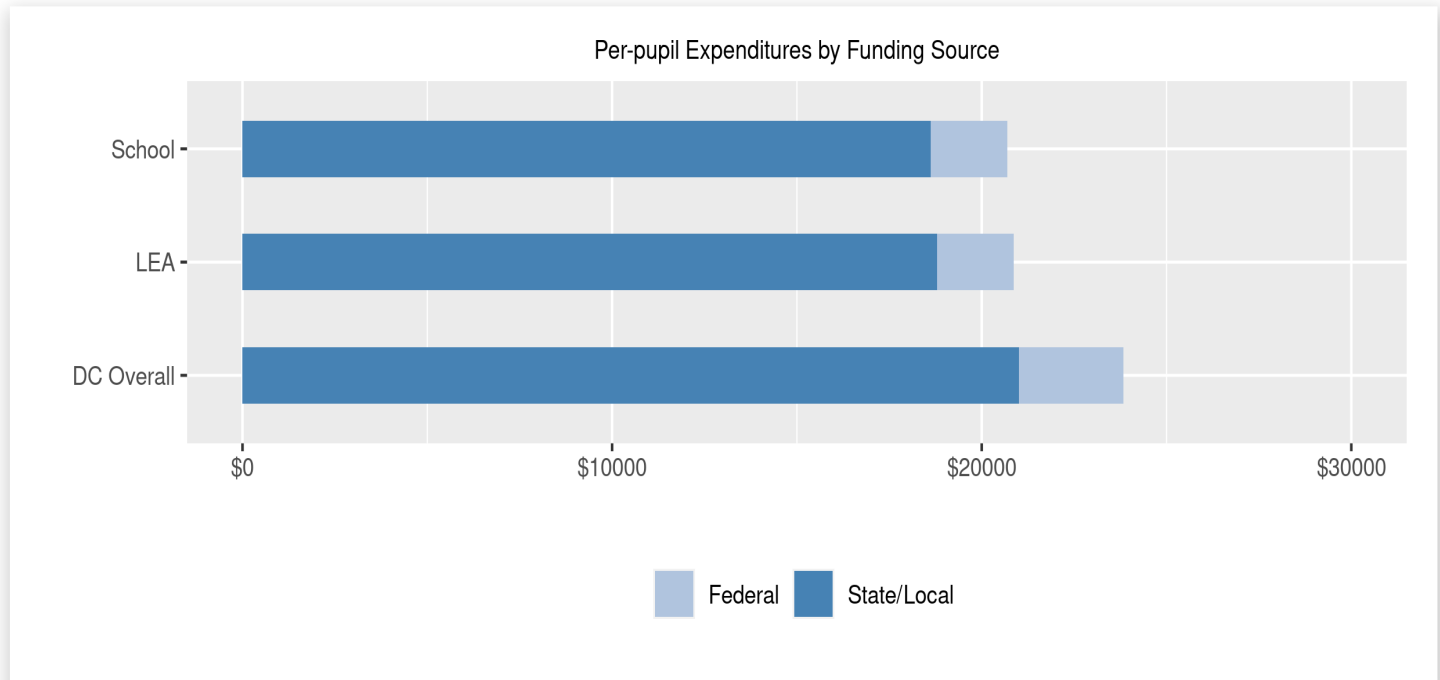
Per-pupil expenditure amount is calculated by dividing the total school expenditures by the October enrollment audit count of public school students.

Per-pupil: \$20,696

October Enrollment Audit Count: 422

Per-pupil Expenditures by Funding Source

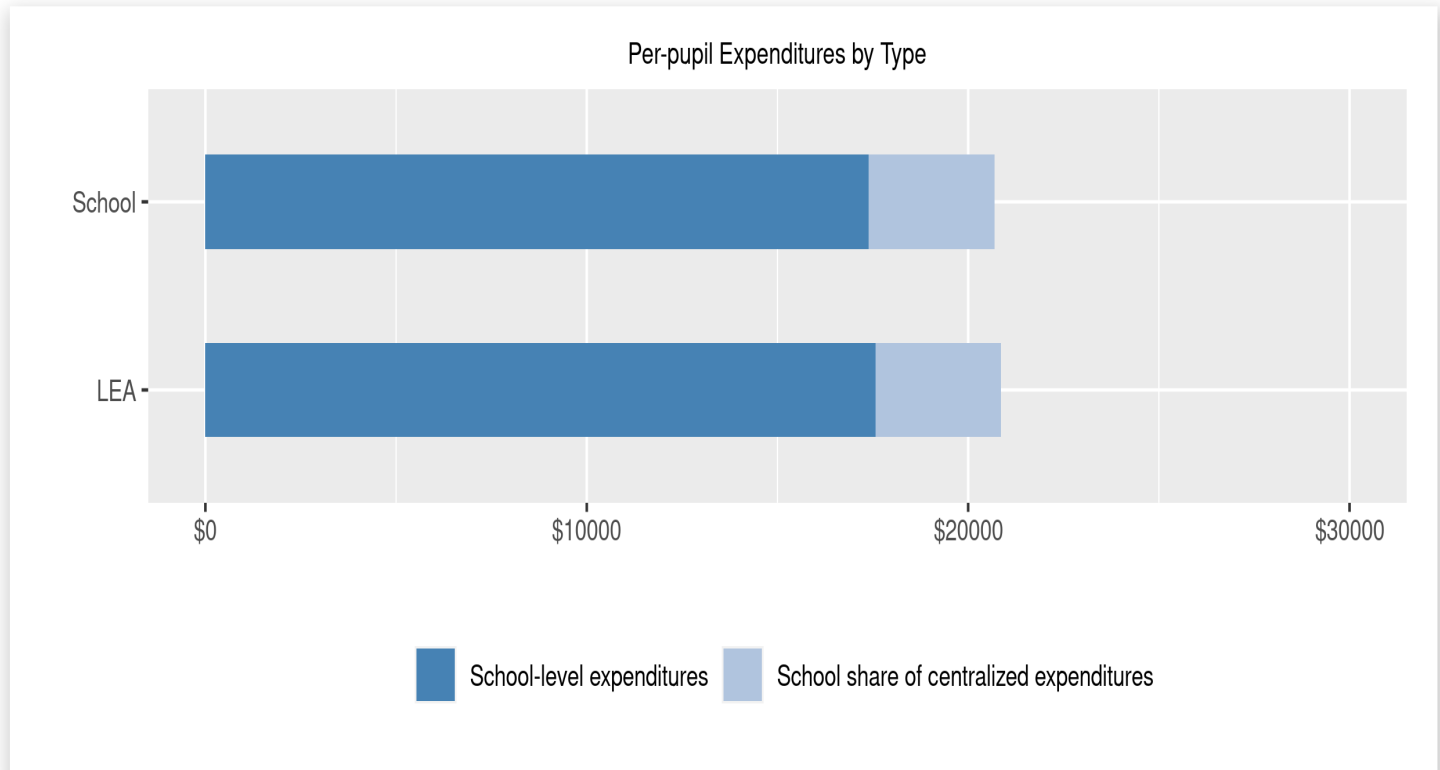
Details are provided about the funding sources for per-pupil expenditures. State/local sources represent revenue received directly from DC, including local grants and per-pupil funding. Federal sources include federal revenue, such as Title I funds and IDEA funding. Per-pupil expenditures are displayed compared to the LEA and DC average.



	State/Local	Federal	Total
School	\$18,619 89.96%	\$2,077 10.04%	\$20,696
LEA	\$18,788 90.05%	\$2,077 9.95%	\$20,864
DC Overall	\$21,002 88.14%	\$2,827 11.86%	\$23,828

Finance (cont.) - Per-pupil Expenditures by Type

Details are provided about the distribution of expenditures between school-level and centralized. School-level expenditures include spending on teacher and administrative salaries, books, supplies, and business costs. Centralized expenditures include the portion of spending at the LEA's central office that are allocated to the school. (Note: LEAs with only one school site do not report separate centralized expenditures)



	School-level expenditures	School share of centralized expenditures	Total
School	\$17,397 84.06%	\$3,298 15.94%	\$20,696
State/Local	\$16,929	\$1,690	
Federal	\$468	\$1,608	
LEA	\$17,566 84.19%	\$3,298 15.81%	\$20,864
State/Local	\$17,098	\$1,690	
Federal	\$468	\$1,608	