

Message from the School

Cedar Tree Academy is an early childhood school that provides a foundation of knowledge to our youngest scholars. Students participate in an engaging curriculum, technology, fine arts and recreational activities in an effort to develop them academically, socially, emotionally and physically.



📍 701 HOWARD ROAD SE, Washington, DC 20020
 🏠 Ward 8
 ☎️ (202) 610-4193

School Instructional Hours

Monday: 07:45AM - 03:30PM
Tuesday: 07:45AM - 03:30PM
Wednesday: 07:45AM - 03:30PM
Thursday: 07:45AM - 03:30PM
Friday: 07:45AM - 03:30PM

Total Students (2020-21 Ever-Enrolled): 433

Total Teachers: 22

Total School Leaders: 5

Grades Served: PK3, PK4, KG, 1, 2

Principal: Celenease Edison

Title-I Status: Yes

Local Education Agency (LEA): Cedar Tree Academy PCS

School Uniforms Required: Yes

Bus Line(s): B2

Metro Line(s): Anacostia

Before Care Offered: Yes

◦ **Cost:** Paid

After Care Offered: Yes

◦ **Cost:** Paid

School Program Information

Not Provided

Parent Organization

Parent Organization Offered: No

Extracurricular & Enrichment Activities

Tutoring Program
 Summer Enrichment Program
 Spanish
 Technology
 Music
 Recreational Activities

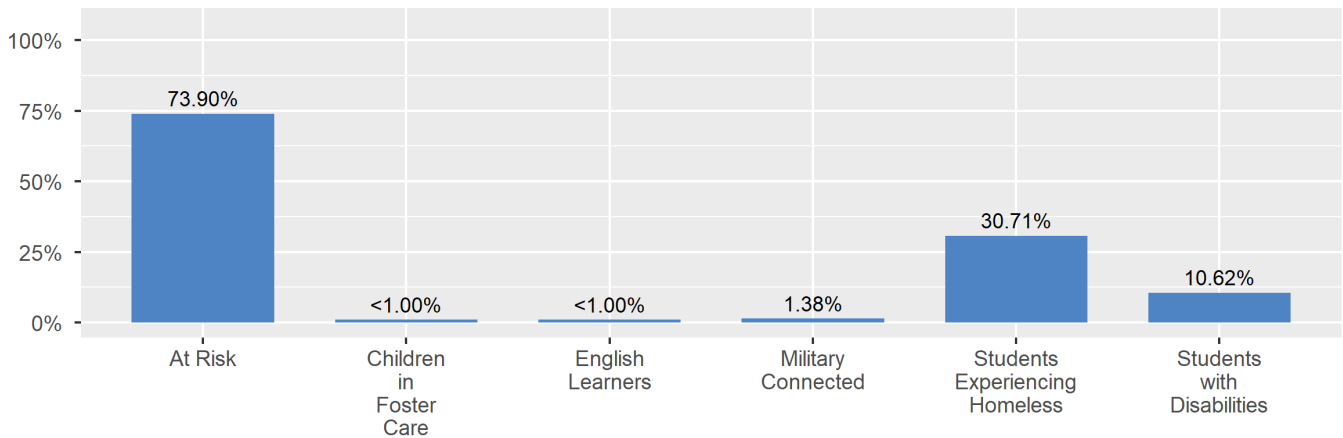
School Enrollment

The ever-enrolled count is the total number of students who are enrolled at any point during the school year; a student who attends a school for one day or 180 days is counted the same way. For this reason, the ever-enrolled count will always be larger than the audit count.

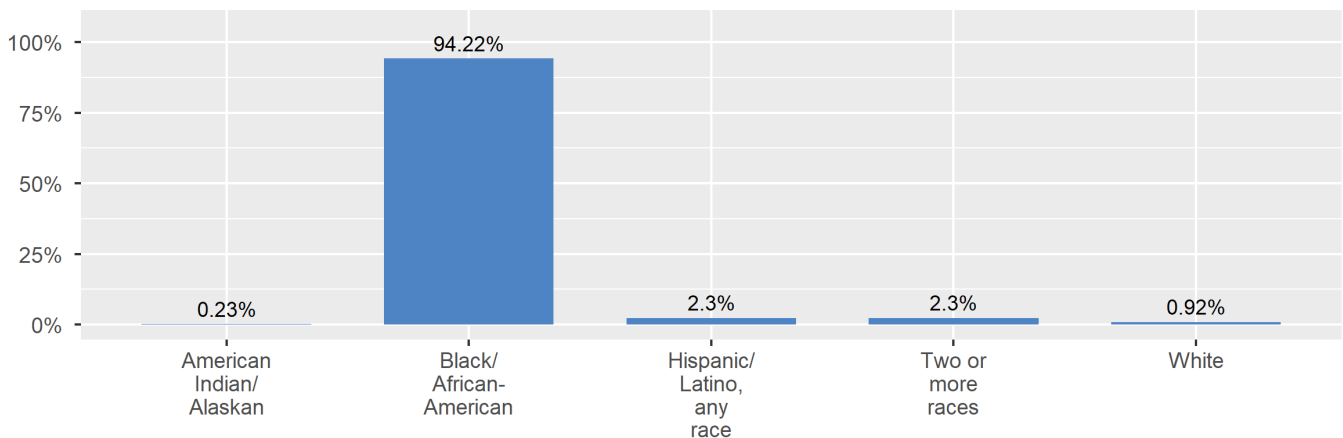
2020-21 Ever-Enrolled by Grade Level

PK3	PK4	KG	Grade 01
81	126	127	99

Enrollment by Student Group



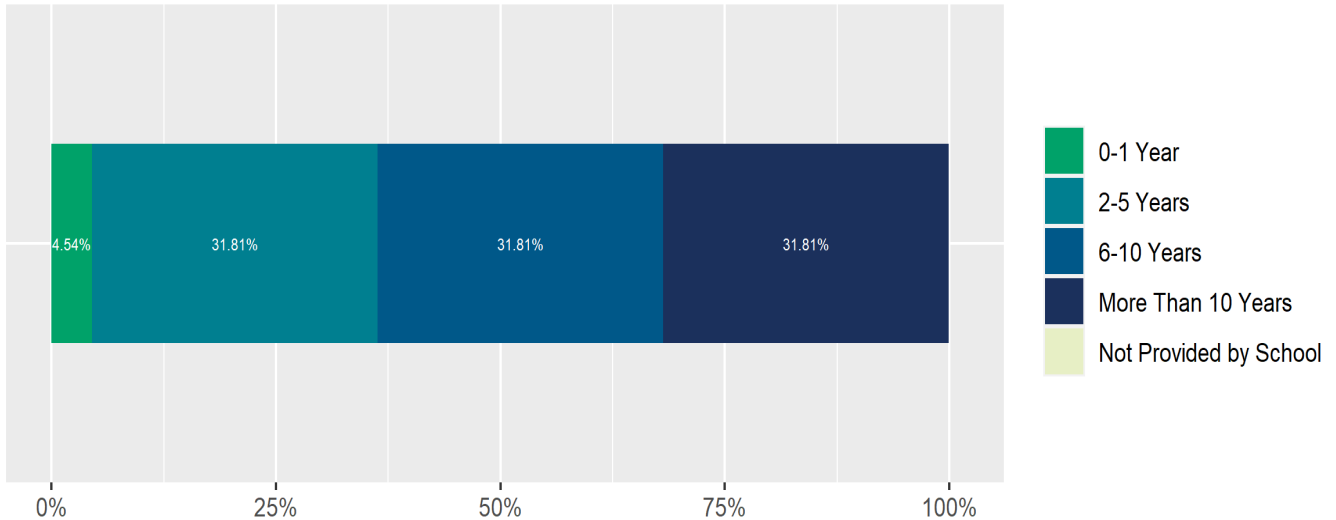
Enrollment by Race/Ethnicity



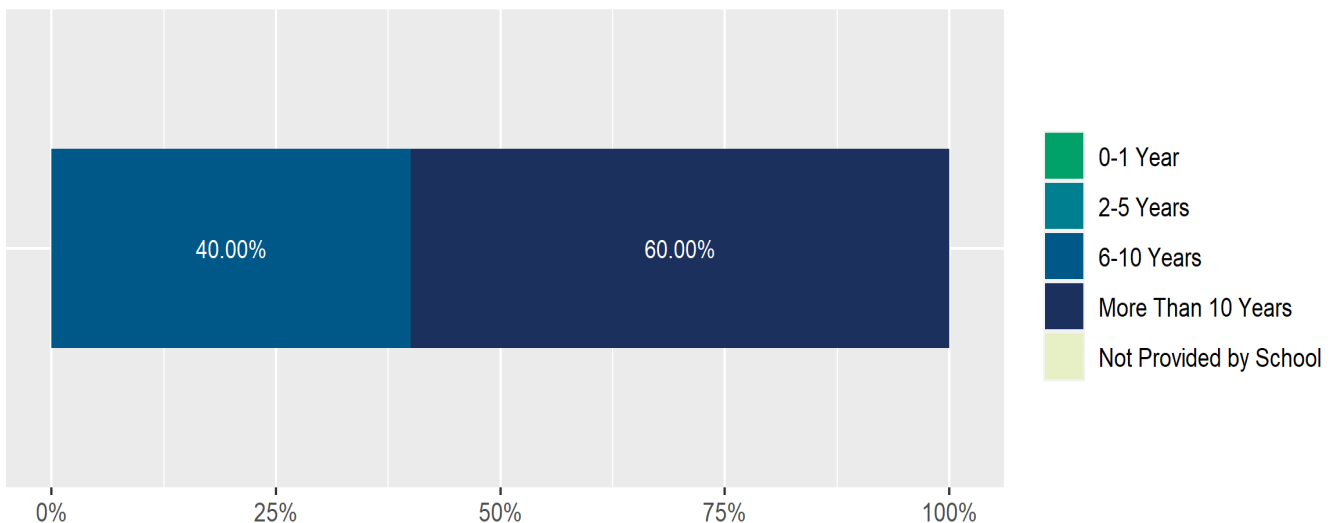
Teacher and School Leader Data

This page includes information about teacher experience levels in DC Public Schools and public charter schools. For DC Public Schools, it also includes information about credentialed and in-field teachers.

Teacher - Years of Experience



School Leader - Years of Experience



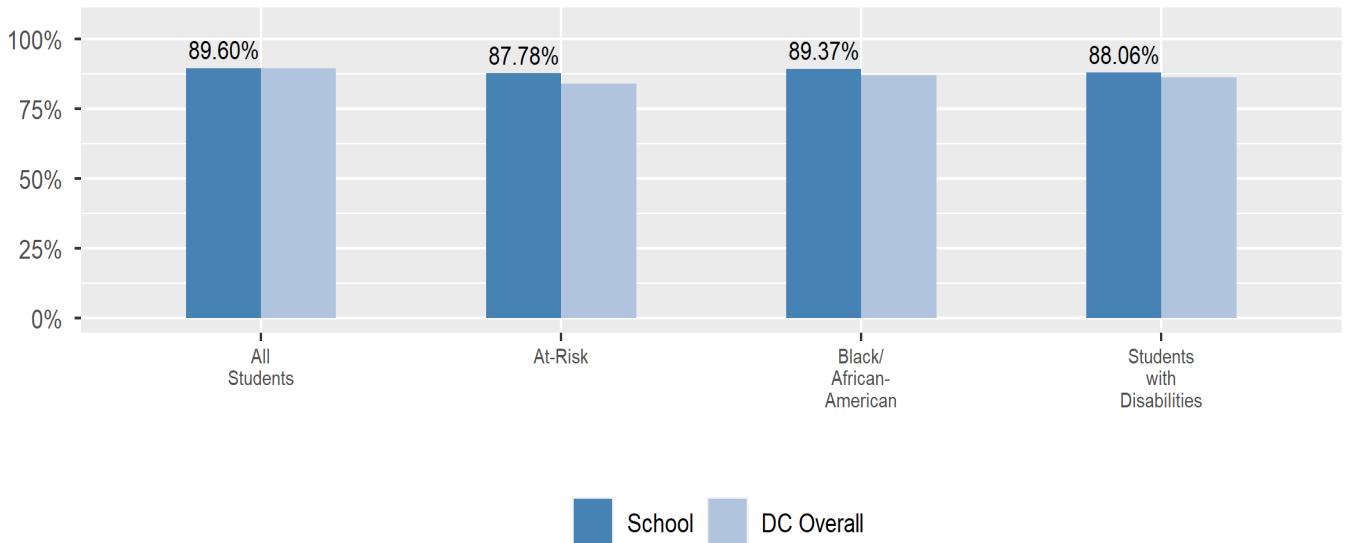
School Safety and Discipline

Information about discipline and school safety in DC, in accordance with the U.S. Department of Education's Civil Rights Data collection, including suspensions and expulsions for students, school related arrests, reported incidents of violence, bullying, and harassment are available in the OSSE Discipline report and data files (<https://osse.dc.gov/page/data-and-reports-0>).

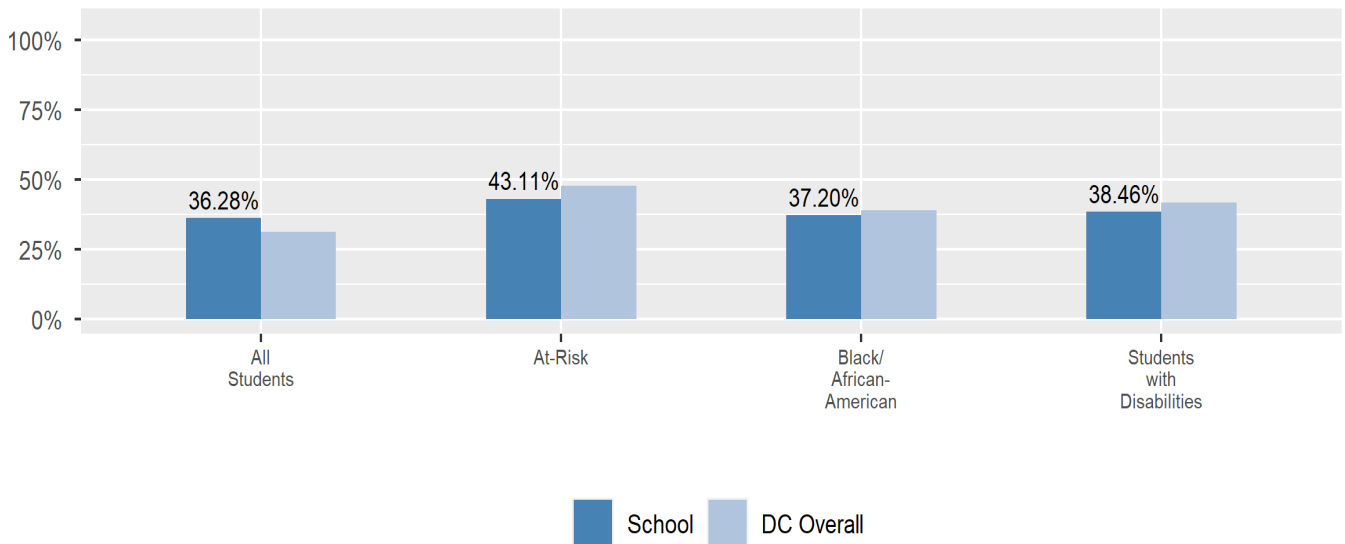
Attendance

Review information on attendance below, including in-seat attendance for all students (there is a separate measure of attendance for pre-K students, since pre-K is not compulsory), and the percentage of students chronically absent, meaning that they miss at least 10% of the school days for which they are enrolled throughout the school year at the school. Note: Due to variations in schools schedules, attendance data may have been collected differently by schools on synchronous and asynchronous learning days. As a result attendance data is unique to this school year and not necessarily comparable to prior years.

In-Seat Attendance

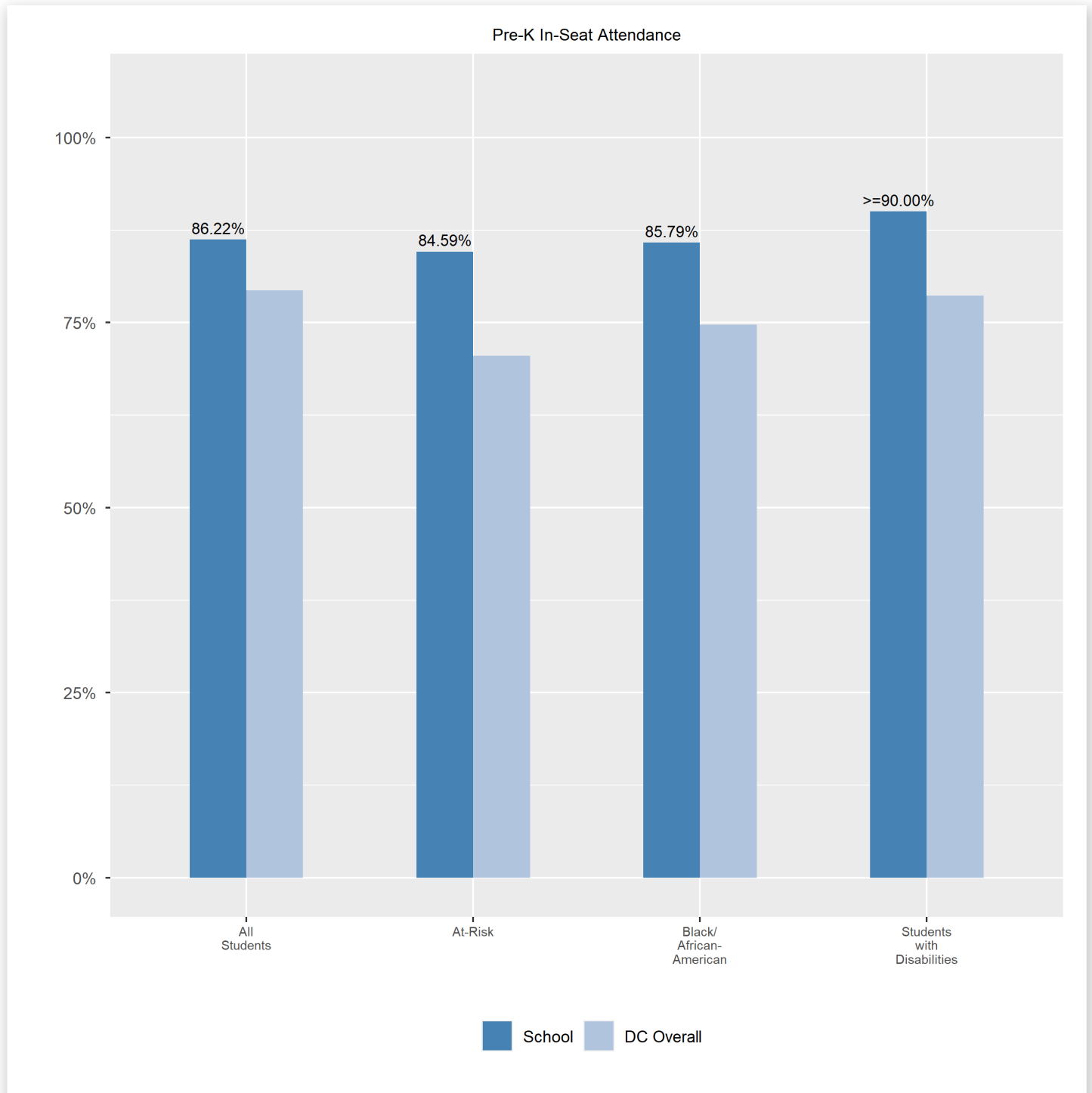


Chronic Absenteeism



Pre-K In-Seat Attendance

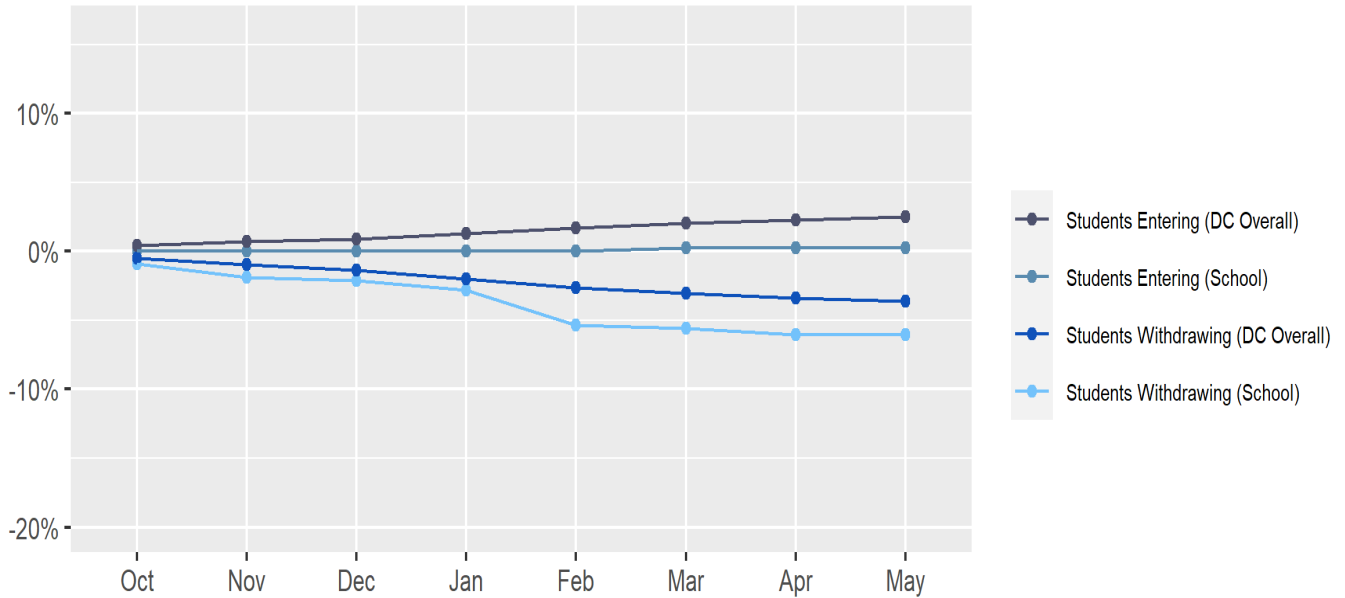
Review information on attendance at the school. This includes in-seat attendance for all students (including a separate measure of attendance for pre-K students, since pre-K is not compulsory), the percentage of students chronically absent, meaning that they miss at least 10% of the school days for which they are enrolled throughout the school year at the school.



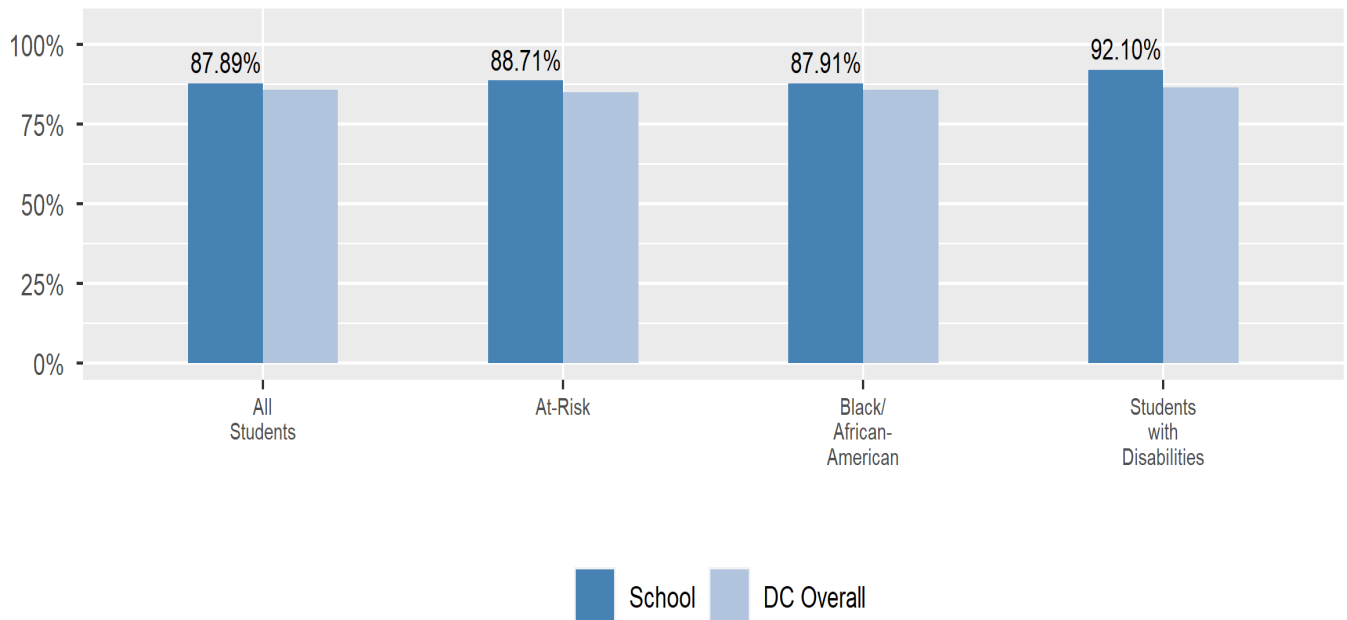
Student Enrollment Changes

Explore information on how much the population at the school changes throughout the year or from year to year. It shows information about changes in enrollment, including whether students leave or enter the school mid-year, and whether eligible students choose to re-enroll in the school.

Mobility



Re-Enrollment



Finance

Per-pupil expenditures represent the average amount of money spent on educating each student. In other words, this value represents the total amount of actual school expenditures divided by the number of students in the school.

2021 Per-pupil Expenditures

Per-pupil expenditure amount is calculated by dividing the total school expenditures by the October enrollment audit count of public school students.

Per-pupil: \$18,038

October Enrollment Audit Count: 428

Total School Expenditures: \$7,720,438

Total Excluded Expenditures: \$437,943

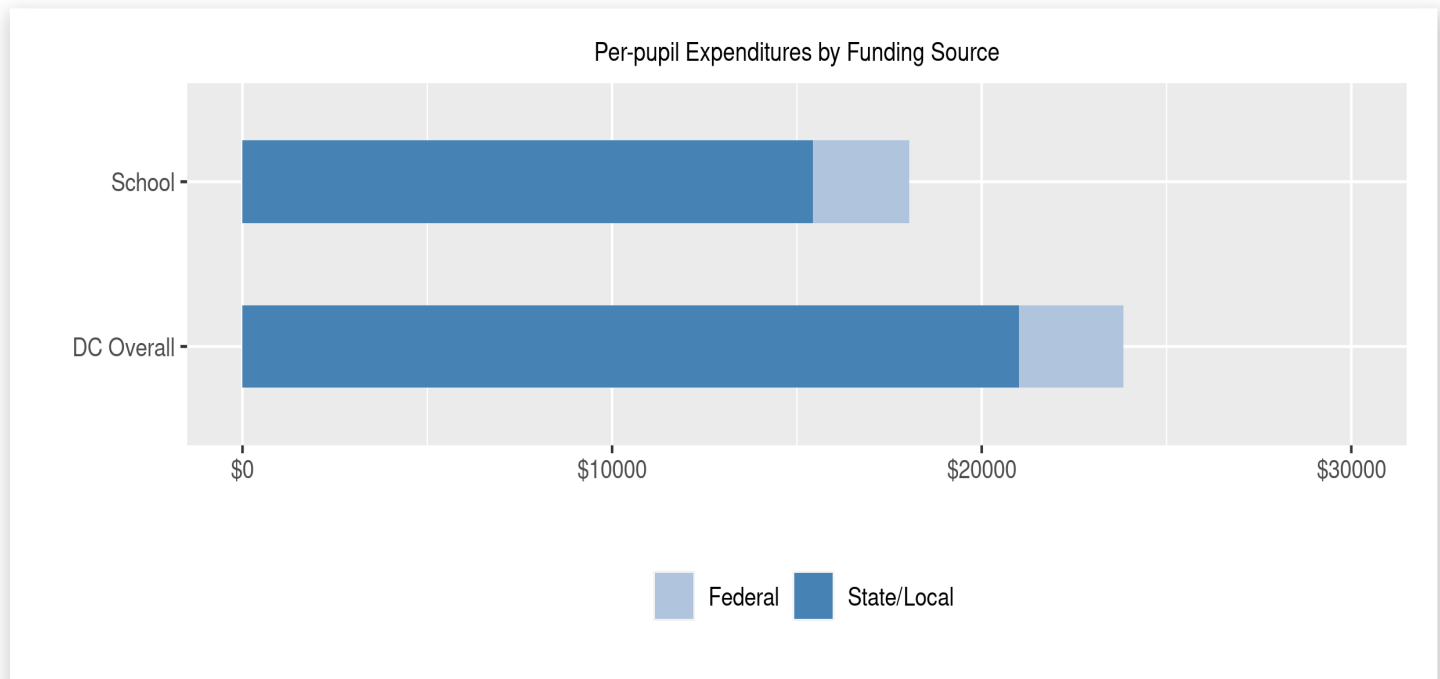
Excluded expenditures include: debt service, capital expenditures, construction and capital improvements, community service operations, and expenditures sourced from private funds (such as parent fees and corporate or charitable donations.) These are not included in the per-pupil expenditure calculation because they are considered outside of the day-to-day operation of the school.

2021 Total Expenditures \$8,158,381

The sum of total school and excluded expenditures is the total amount of money the LEA spent for the fiscal year.

Per-pupil Expenditures by Funding Source

Details are provided about the funding sources for per-pupil expenditures. State/local sources represent revenue received directly from DC, including local grants and per-pupil funding. Federal sources include federal revenue, such as Title I funds and IDEA funding. Per-pupil expenditures are displayed compared to the LEA and DC average.



	State/Local	Federal	Total
School	\$15,435 85.57%	\$2,604 14.44%	\$18,038
DC Overall	\$21,002 88.14%	\$2,827 11.86%	\$23,828