

Friendship PCS - Woodridge International Middle

Message from the School

Friendship Woodridge's mission is to provide a world-class education that motivates students to achieve high academic standards, enjoy learning, and develop as ethical, literate, well-rounded and self-sufficient citizens who contribute actively to their communities. Our shared values are integrity, responsibility, confidence, caring, commitment, patience, persistence, and respect.



📍 2959 CARLTON AVENUE NE, Washington, DC 20018
 🏠 Ward 5
 ☎ (202) 635-6500

School Instructional Hours

Monday: 07:55AM - 03:30PM
Tuesday: 07:55AM - 03:30PM
Wednesday: 07:55AM - 01:00PM
Thursday: 07:55AM - 03:30PM
Friday: 07:55AM - 03:30PM

Total Students (2020-21 Ever-Enrolled): 236

Total Teachers: 25

Total School Leaders: 4

Grades Served: 4, 5, 6, 7, 8

Principal: Felicia Owo

Title-I Status: Yes

Local Education Agency (LEA): Friendship PCS

School Uniforms Required: Yes

Bus Line(s): 83, 86, B2, B8, B9, G9, H6, T14, T18

Metro Line(s): Rhode Island Avenue

Before Care Offered: Yes

◦ **Cost:** Sliding Scale

After Care Offered: Yes

◦ **Cost:** Sliding Scale

School Program Information

Extended day
 Interscholastic Sports

Parent Organization

Parent Organization Offered: Yes

Parent Organization Contact: Tamika Maultsby
 (tmaultsby@friendshipschools.org)

Parent Organization Website:
 www.friendshipschools.org

Extracurricular & Enrichment Activities

| | |
|--------------|-------------------------|
| Anime Club | Friendship News Network |
| Art Club | Garden Club |
| Basketball | Girls on the Run |
| Cheerleading | National Poetry Slam |
| Choir | Robotics Club |
| Dance | Spanish Club |
| Football | And Student Government |

Friendship PCS - Woodridge International Middle

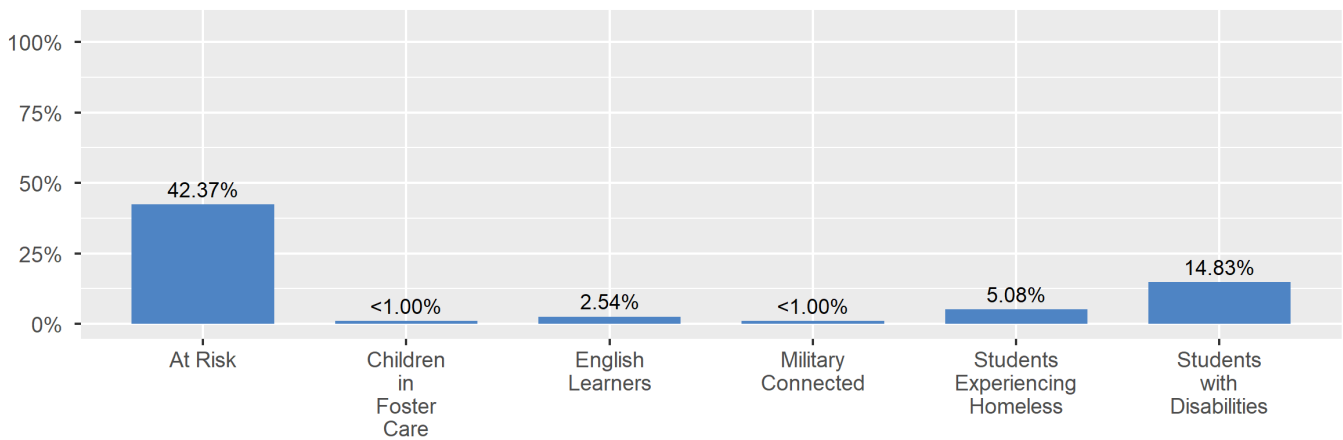
School Enrollment

The ever-enrolled count is the total number of students who are enrolled at any point during the school year; a student who attends a school for one day or 180 days is counted the same way. For this reason, the ever-enrolled count will always be larger than the audit count.

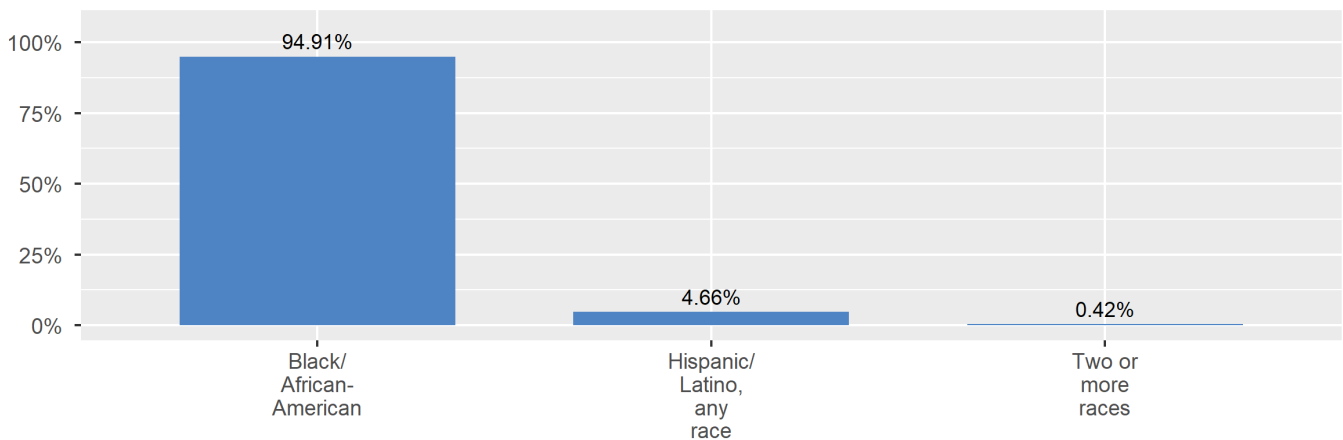
2020-21 Ever-Enrolled by Grade Level

| Grade 04 | Grade 05 | Grade 06 | Grade 07 | Grade 08 |
|----------|----------|----------|----------|----------|
| 53 | 37 | 55 | 41 | 50 |

Enrollment by Student Group



Enrollment by Race/Ethnicity

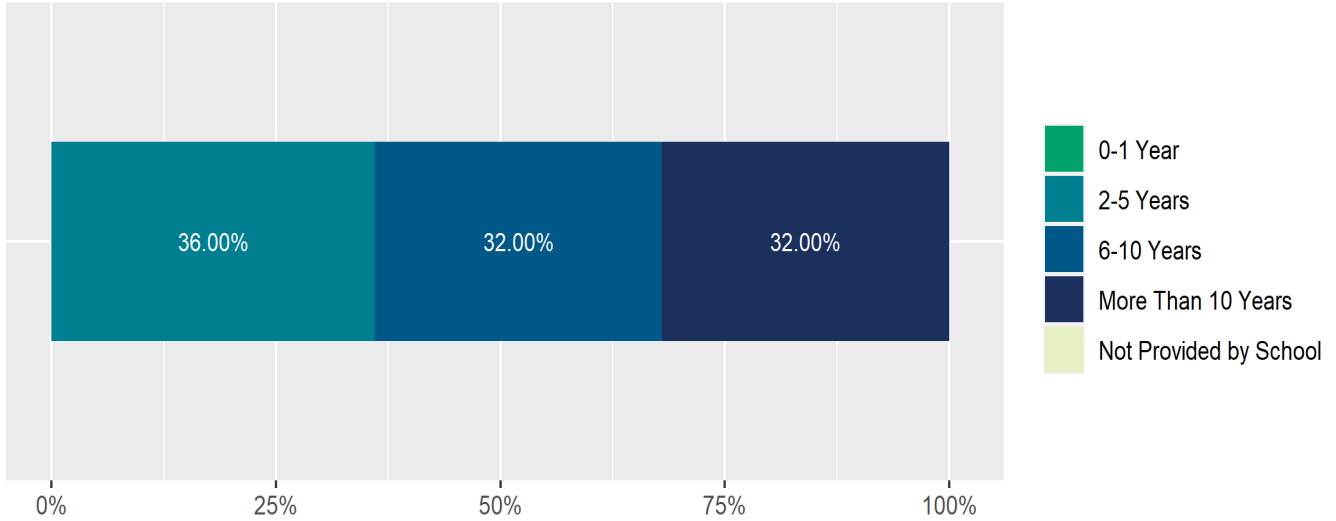


Friendship PCS - Woodridge International Middle

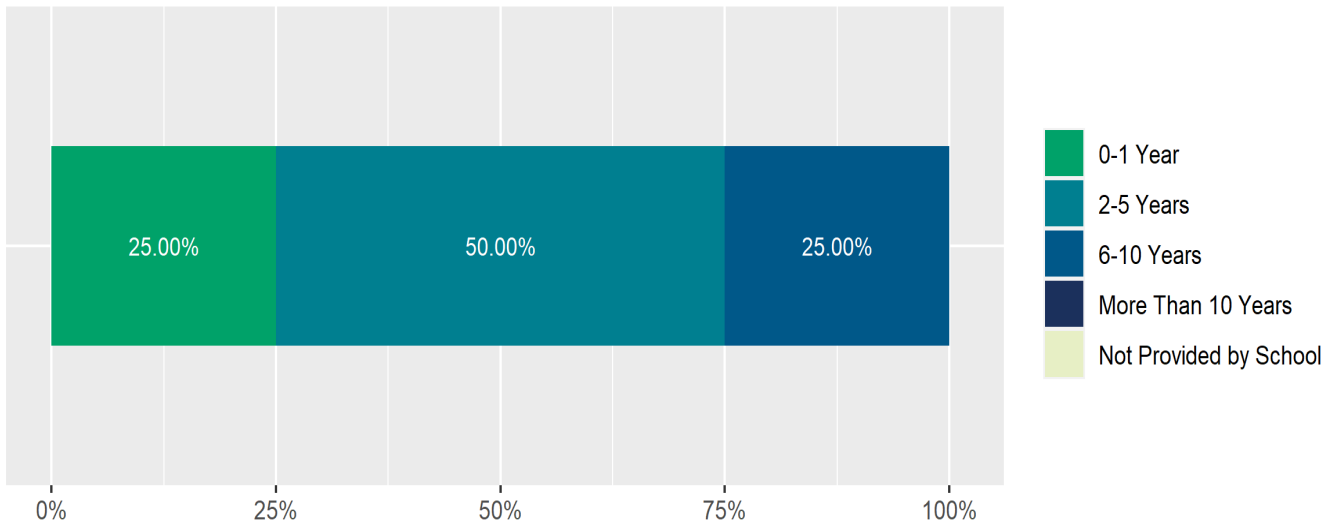
Teacher and School Leader Data

This page includes information about teacher experience levels in DC Public Schools and public charter schools. For DC Public Schools, it also includes information about credentialed and in-field teachers.

Teacher - Years of Experience



School Leader - Years of Experience



School Safety and Discipline

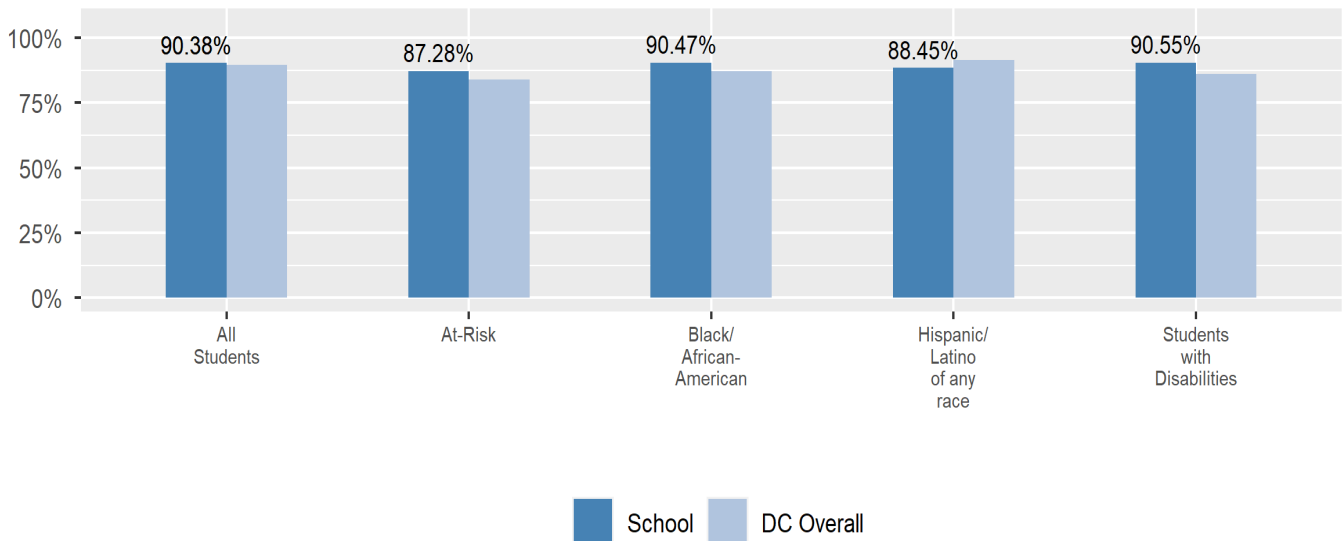
Information about discipline and school safety in DC, in accordance with the U.S. Department of Education's Civil Rights Data collection, including suspensions and expulsions for students, school related arrests, reported incidents of violence, bullying, and harassment are available in the OSSE Discipline report and data files (<https://osse.dc.gov/page/data-and-reports-0>).

Friendship PCS - Woodridge International Middle

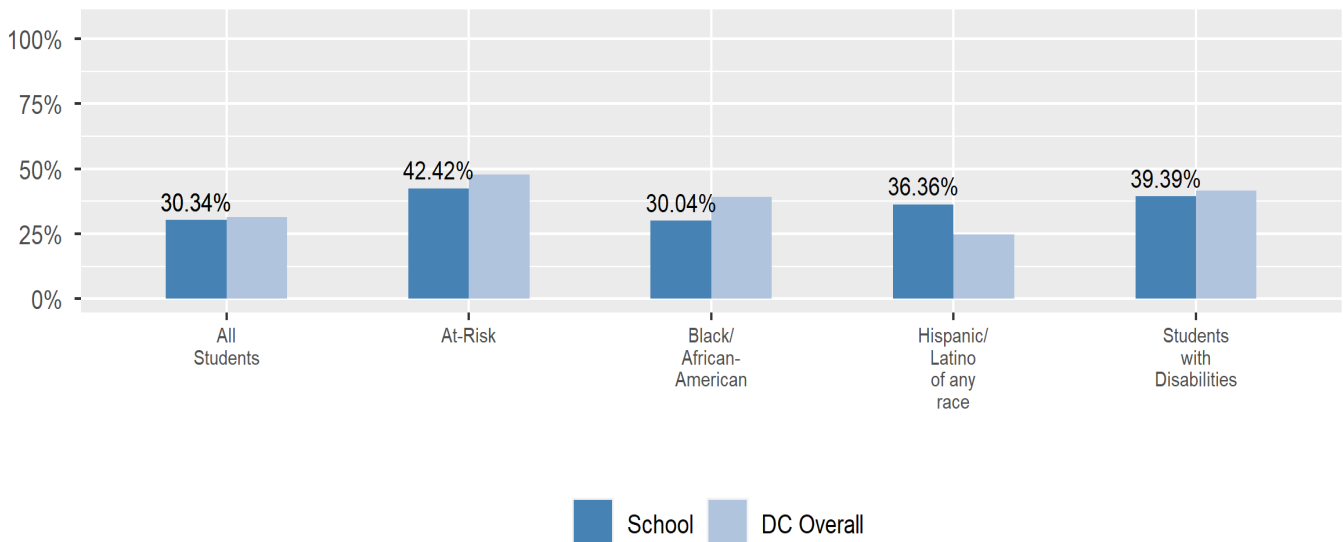
Attendance

Review information on attendance below, including in-seat attendance for all students (there is a separate measure of attendance for pre-K students, since pre-K is not compulsory), and the percentage of students chronically absent, meaning that they miss at least 10% of the school days for which they are enrolled throughout the school year at the school. Note: Due to variations in schools schedules, attendance data may have been collected differently by schools on synchronous and asynchronous learning days. As a result attendance data is unique to this school year and not necessarily comparable to prior years.

In-Seat Attendance



Chronic Absenteeism

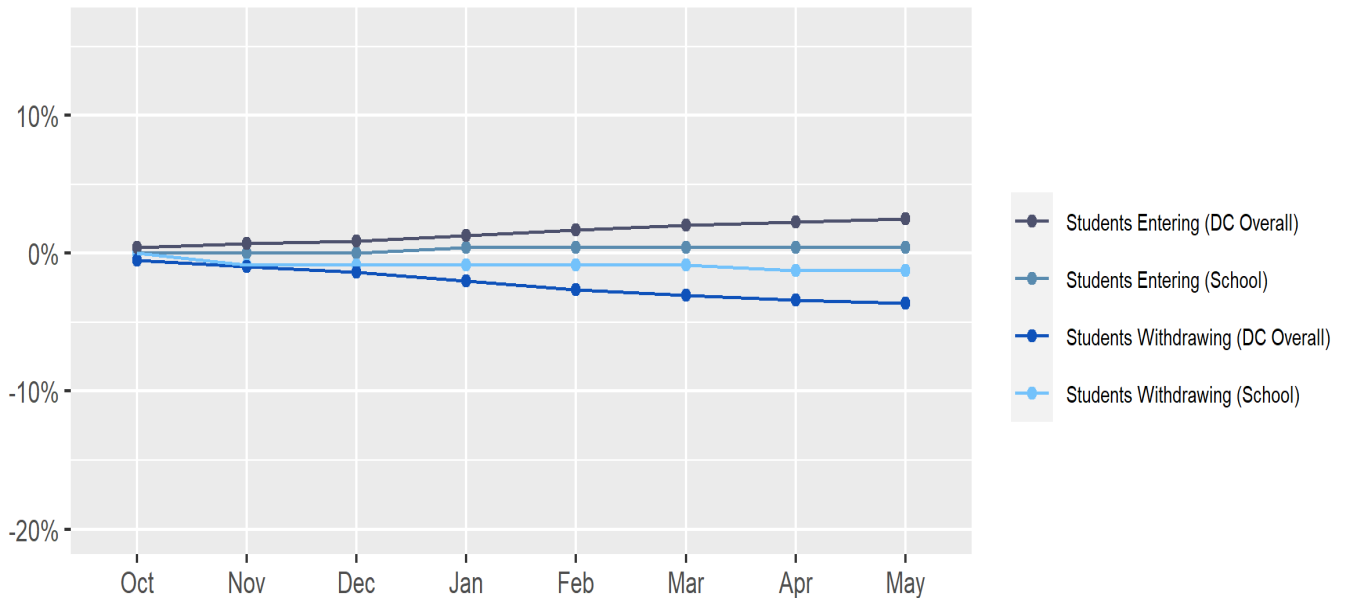


Friendship PCS - Woodridge International Middle

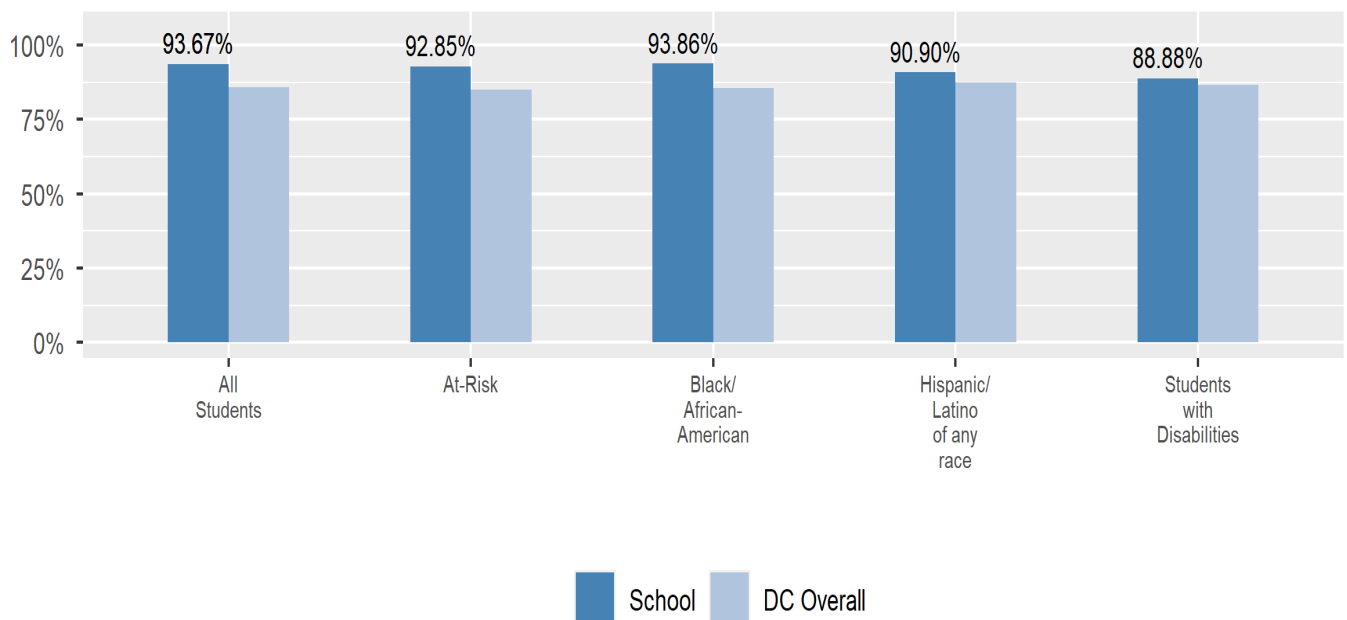
Student Enrollment Changes

Explore information on how much the population at the school changes throughout the year or from year to year. It shows information about changes in enrollment, including whether students leave or enter the school mid-year, and whether eligible students choose to re-enroll in the school.

Mobility



Re-Enrollment



Friendship PCS - Woodridge International Middle

Finance

Per-pupil expenditures represent the average amount of money spent on educating each student. In other words, this value represents the total amount of actual school expenditures divided by the number of students in the school.

2021 Per-pupil Expenditures

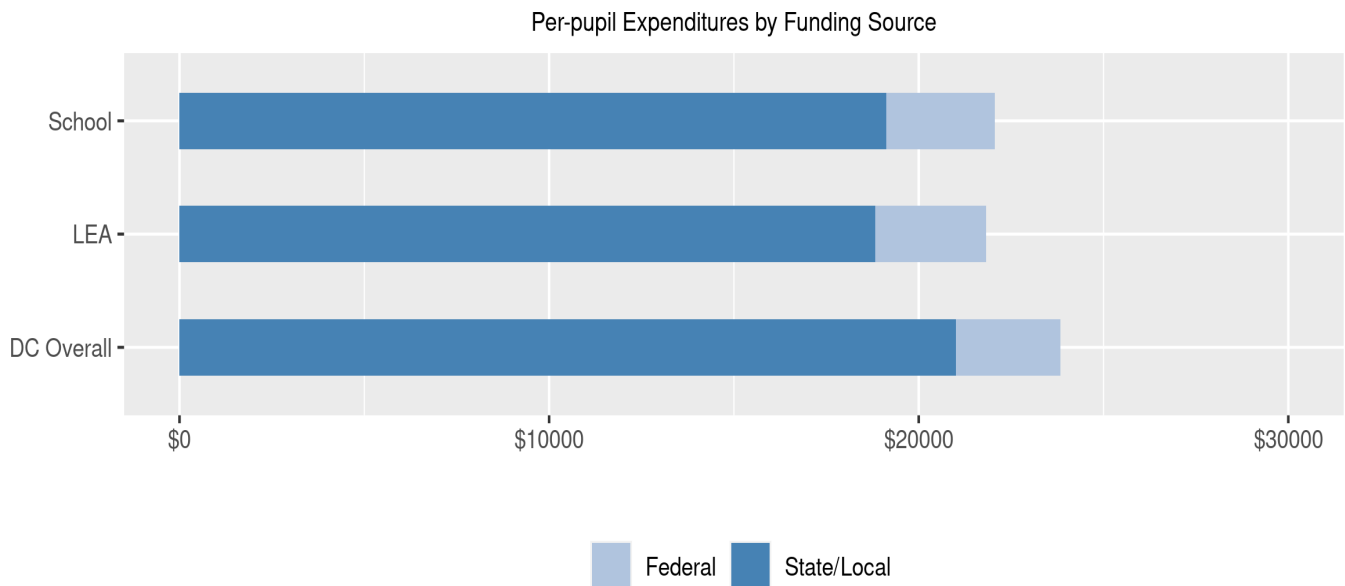
Per-pupil expenditure amount is calculated by dividing the total school expenditures by the October enrollment audit count of public school students.

Per-pupil: \$22,053

October Enrollment Audit Count: 234

Per-pupil Expenditures by Funding Source

Details are provided about the funding sources for per-pupil expenditures. State/local sources represent revenue received directly from DC, including local grants and per-pupil funding. Federal sources include federal revenue, such as Title I funds and IDEA funding. Per-pupil expenditures are displayed compared to the LEA and DC average.

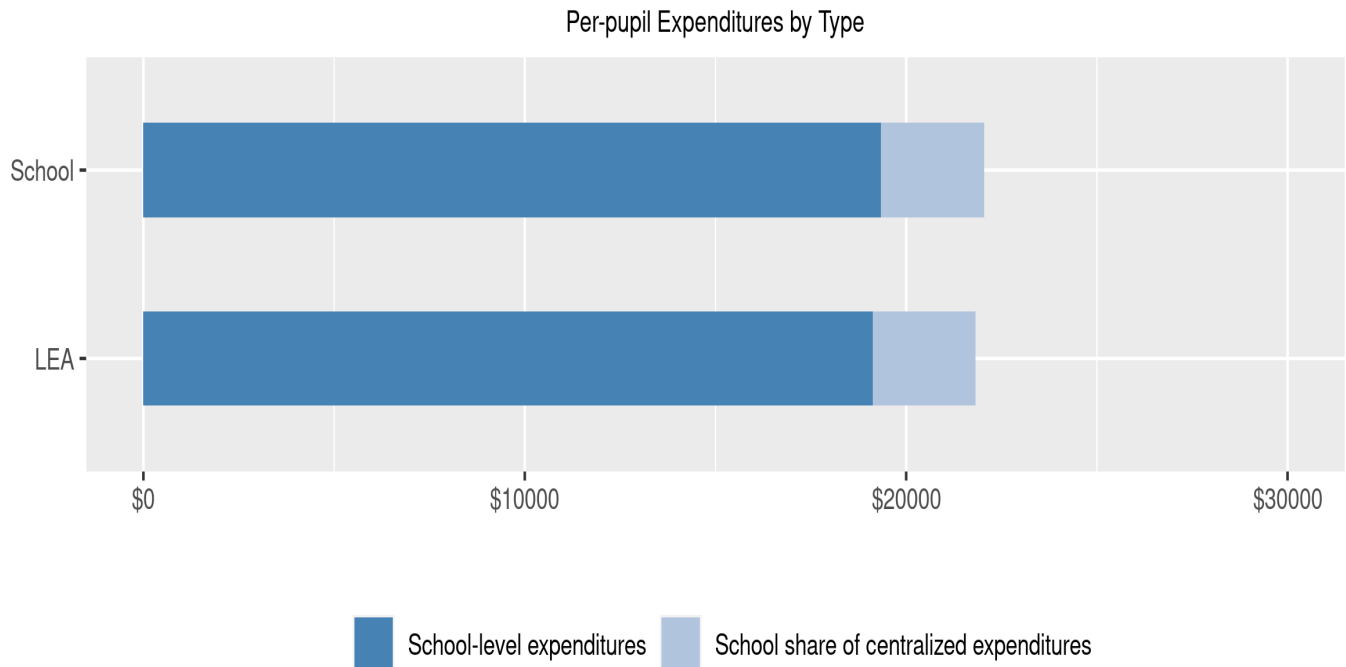


| | State/Local | Federal | Total |
|------------|-----------------|----------------|----------|
| School | \$19,118 86.69% | \$2,935 13.31% | \$22,053 |
| LEA | \$18,830 86.29% | \$2,993 13.71% | \$21,823 |
| DC Overall | \$21,002 88.14% | \$2,827 11.86% | \$23,828 |

Friendship PCS - Woodridge International Middle

Finance (cont.) - Per-pupil Expenditures by Type

Details are provided about the distribution of expenditures between school-level and centralized. School-level expenditures include spending on teacher and administrative salaries, books, supplies, and business costs. Centralized expenditures include the portion of spending at the LEA's central office that are allocated to the school. (Note: LEAs with only one school site do not report separate centralized expenditures)



| | School-level expenditures | School share of centralized expenditures | Total |
|-------------|---------------------------|--|----------|
| School | \$19,341 87.7% | \$2,713 12.3% | \$22,053 |
| State/Local | \$16,729 | \$2,390 | |
| Federal | \$2,612 | \$323 | |
| LEA | \$19,127 87.65% | \$2,696 12.35% | \$21,823 |
| State/Local | \$16,463 | \$2,367 | |
| Federal | \$2,664 | \$329 | |