

Message from the School

Friendship Chamberlain's mission is to provide a world-class education that motivates students to achieve high academic standards, enjoy learning, and develop as ethical, literate, well-rounded and self-sufficient citizens who contribute actively to their communities. Our shared values are integrity, responsibility, confidence, caring, commitment, patience, persistence, and respect.



1345 POTOMAC AVENUE SE, Washington, DC 20003
Ward 6
(202) 547-5800

School Instructional Hours

Monday: 07:55AM - 03:30PM
Tuesday: 07:55AM - 03:30PM
Wednesday: 07:55AM - 01:00PM
Thursday: 07:55AM - 03:30PM
Friday: 07:55AM - 03:30PM

Total Students (2020-21 Ever-Enrolled): 318
Total Teachers: 21
Total School Leaders: 3
Grades Served: 4, 5, 6, 7, 8
Principal: Diamond Harris
Title-I Status: Yes
Local Education Agency (LEA): Friendship PCS

School Uniforms Required: Yes
Bus Line(s): 32, 34, 36, V7, V8, V9
Metro Line(s): Potomac Avenue
Before Care Offered: Yes
◦ **Cost:** Sliding Scale
After Care Offered: Yes
◦ **Cost:** Sliding Scale

School Program Information

Extended day
Interscholastic
Sports

Parent Organization

Parent Organization Offered: Yes
Parent Organization Contact: Tamika Maultsby
(tmaultsby@friendshipschools.org)
Parent Organization Website:
www.friendshipschools.org

Extracurricular & Enrichment Activities

Art Club
Artsee Jewelry
Cheerleading
Drama
Girls on the Run
MATHCOUNTS
Robotics Team
Band
Dance
Choir

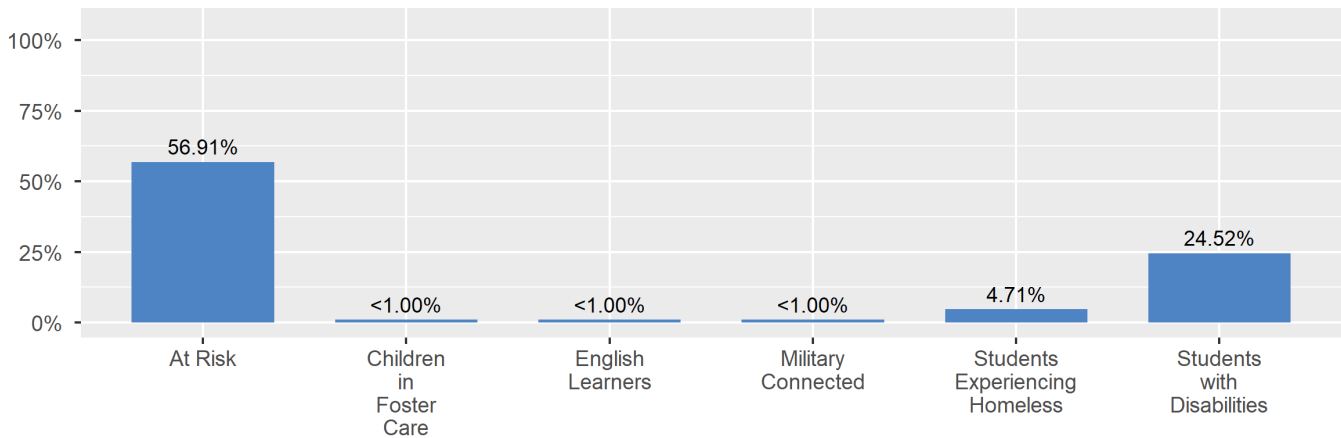
School Enrollment

The ever-enrolled count is the total number of students who are enrolled at any point during the school year; a student who attends a school for one day or 180 days is counted the same way. For this reason, the ever-enrolled count will always be larger than the audit count.

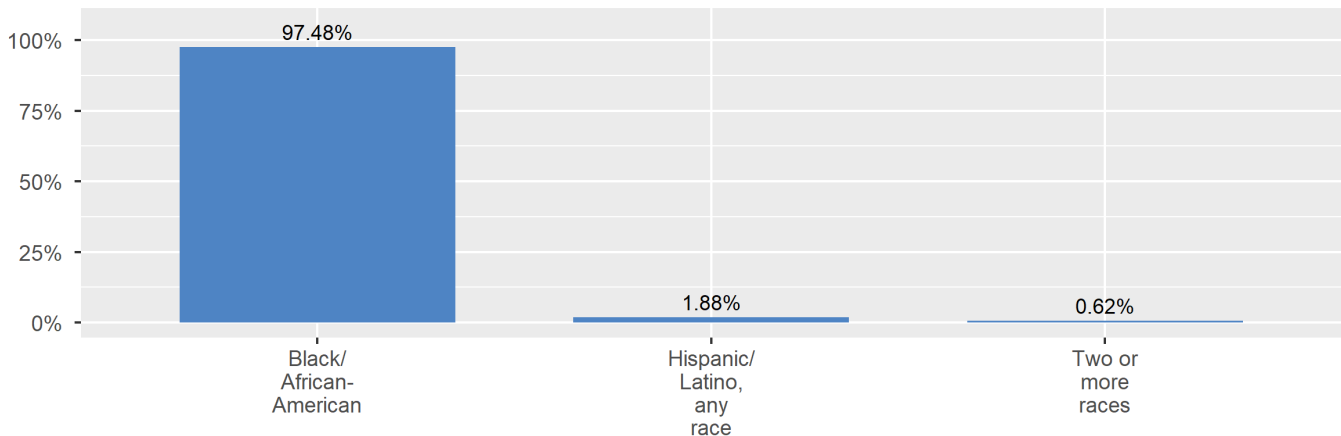
2020-21 Ever-Enrolled by Grade Level

Grade 04	Grade 05	Grade 06	Grade 07	Grade 08
67	58	73	64	56

Enrollment by Student Group



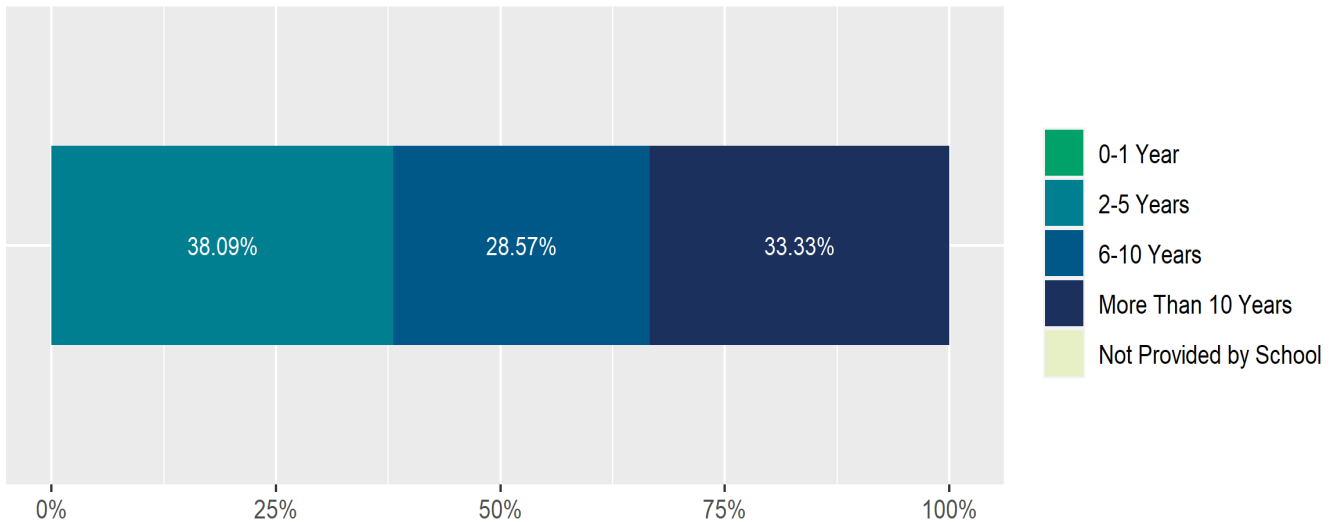
Enrollment by Race/Ethnicity



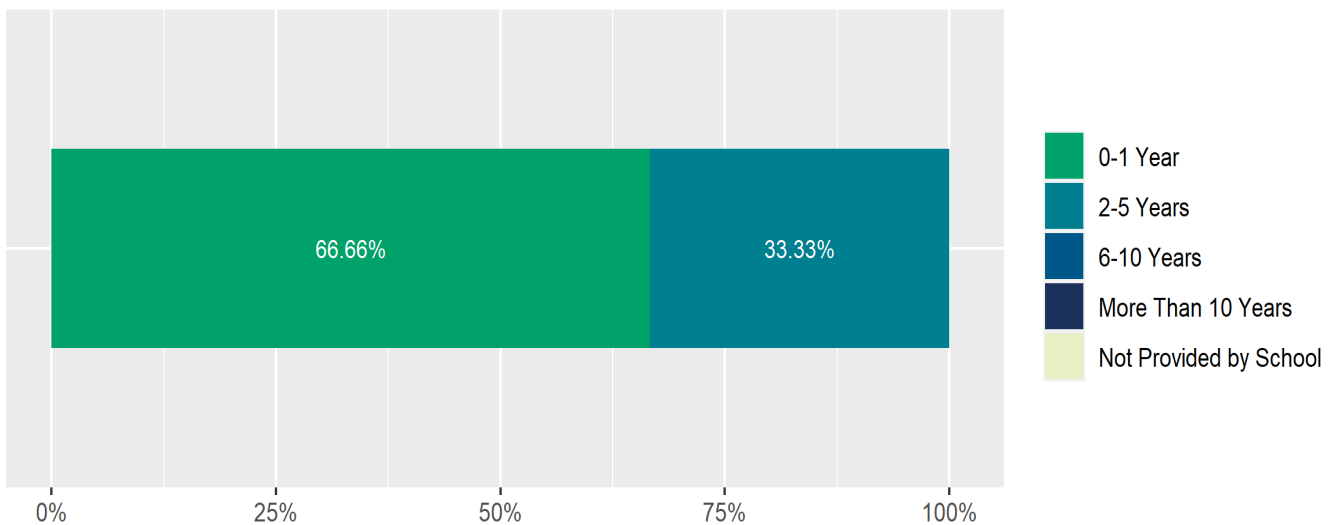
Teacher and School Leader Data

This page includes information about teacher experience levels in DC Public Schools and public charter schools. For DC Public Schools, it also includes information about credentialed and in-field teachers.

Teacher - Years of Experience



School Leader - Years of Experience



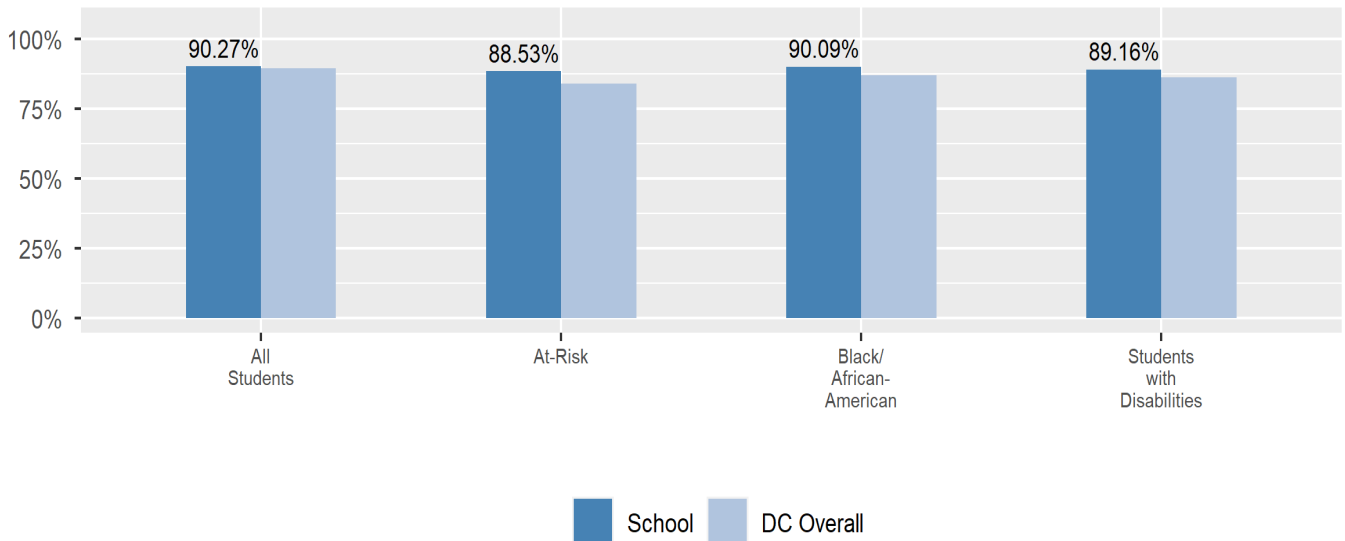
School Safety and Discipline

Information about discipline and school safety in DC, in accordance with the U.S. Department of Education's Civil Rights Data collection, including suspensions and expulsions for students, school related arrests, reported incidents of violence, bullying, and harassment are available in the OSSE Discipline report and data files (<https://osse.dc.gov/page/data-and-reports-0>).

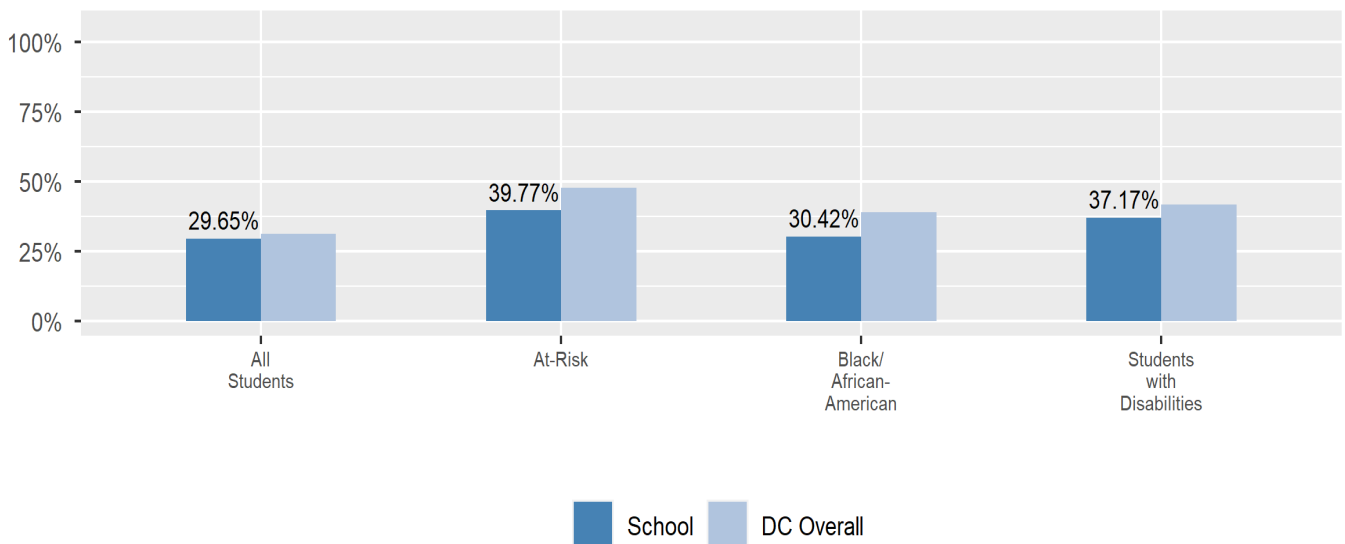
Attendance

Review information on attendance below, including in-seat attendance for all students (there is a separate measure of attendance for pre-K students, since pre-K is not compulsory), and the percentage of students chronically absent, meaning that they miss at least 10% of the school days for which they are enrolled throughout the school year at the school. Note: Due to variations in schools schedules, attendance data may have been collected differently by schools on synchronous and asynchronous learning days. As a result attendance data is unique to this school year and not necessarily comparable to prior years.

In-Seat Attendance



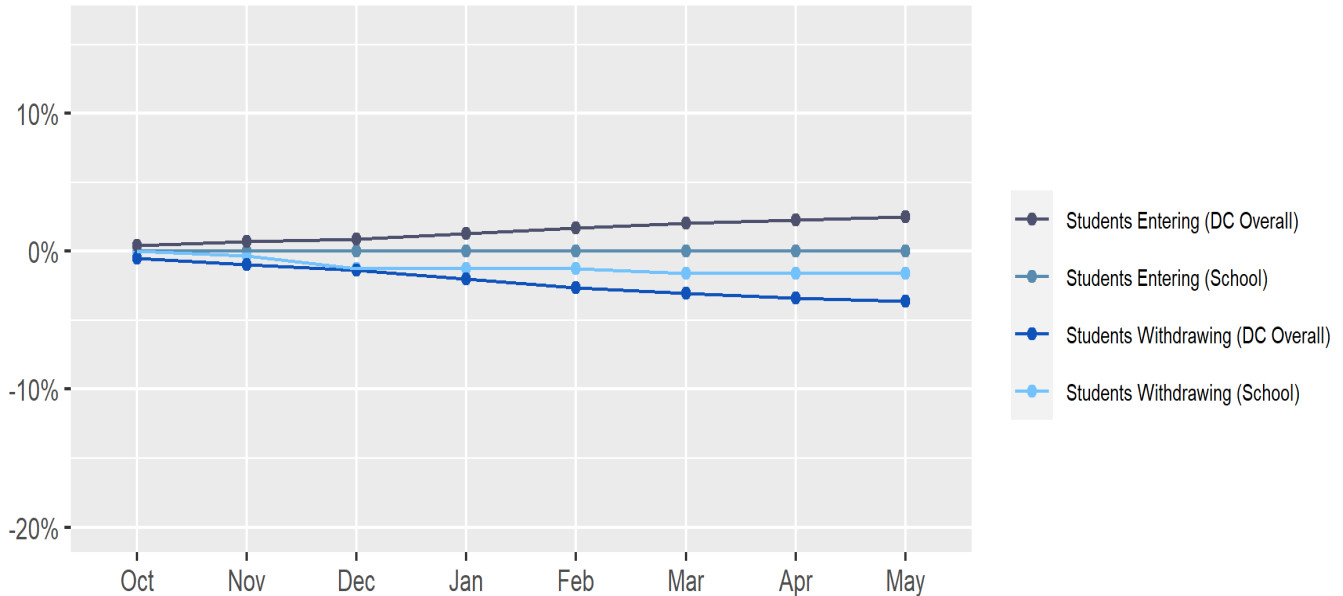
Chronic Absenteeism



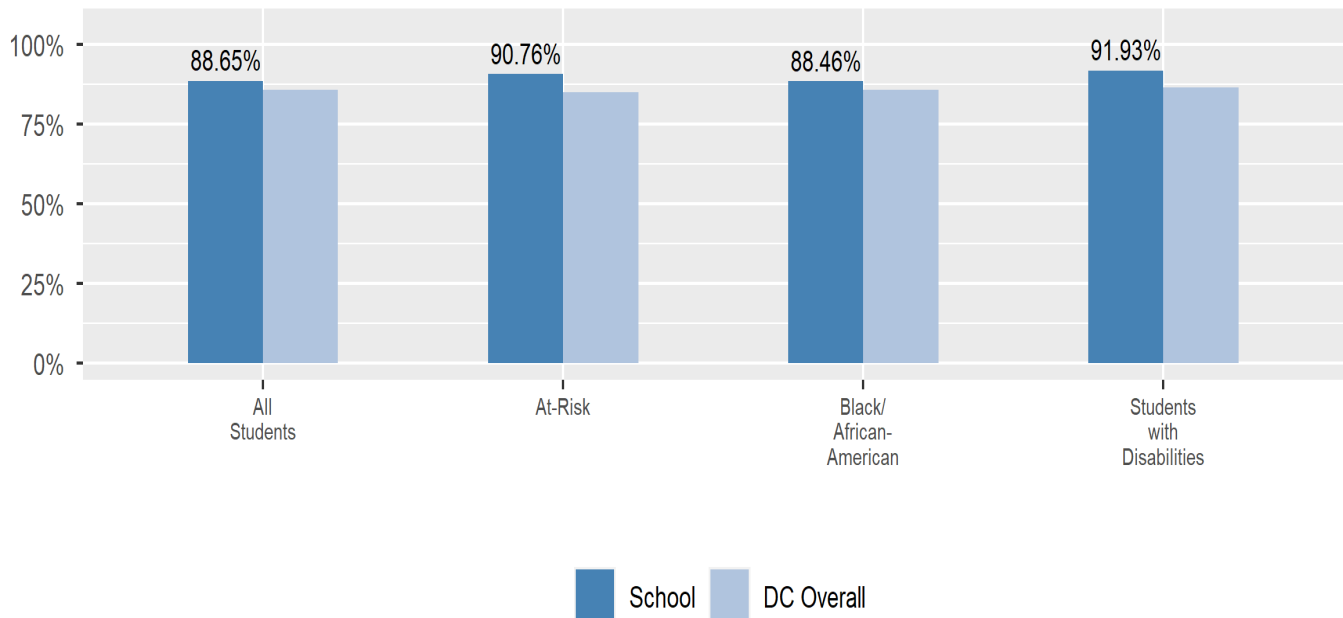
Student Enrollment Changes

Explore information on how much the population at the school changes throughout the year or from year to year. It shows information about changes in enrollment, including whether students leave or enter the school mid-year, and whether eligible students choose to re-enroll in the school.

Mobility



Re-Enrollment



Finance

Per-pupil expenditures represent the average amount of money spent on educating each student. In other words, this value represents the total amount of actual school expenditures divided by the number of students in the school.

2021 Per-pupil Expenditures

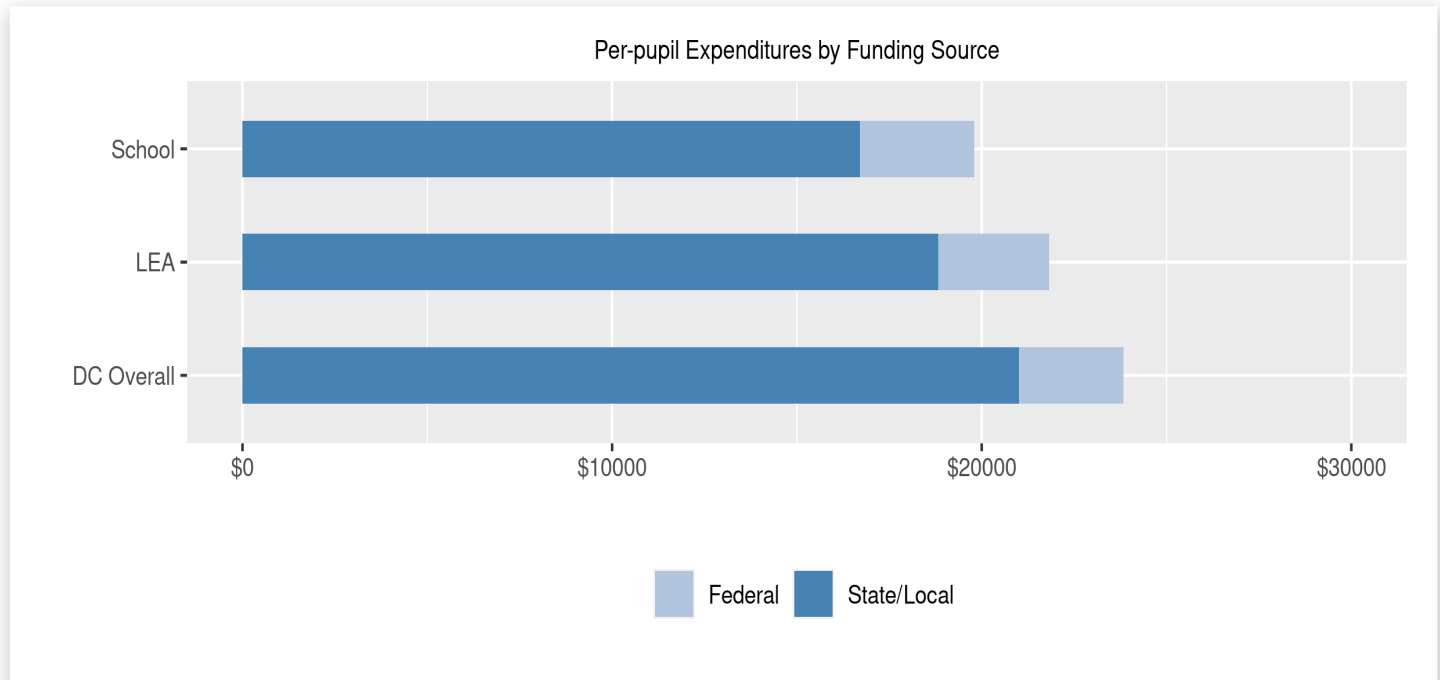
Per-pupil expenditure amount is calculated by dividing the total school expenditures by the October enrollment audit count of public school students.

Per-pupil: \$19,798

October Enrollment Audit Count: 316

Per-pupil Expenditures by Funding Source

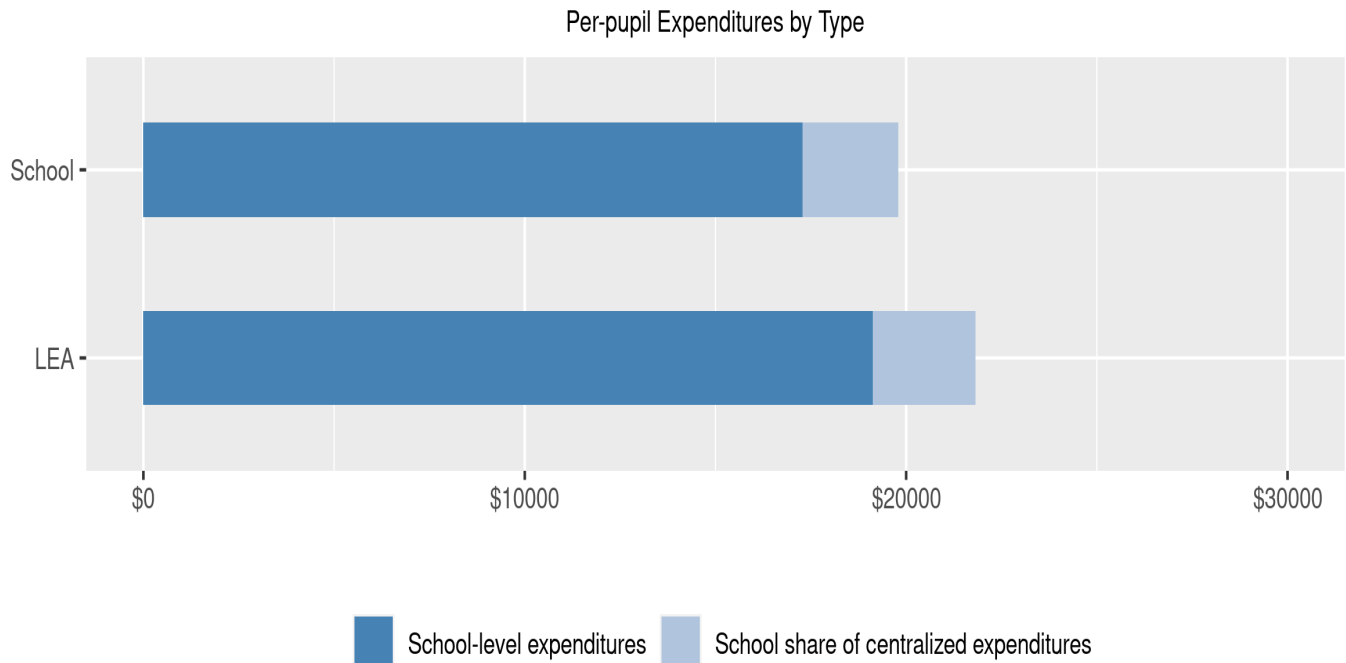
Details are provided about the funding sources for per-pupil expenditures. State/local sources represent revenue received directly from DC, including local grants and per-pupil funding. Federal sources include federal revenue, such as Title I funds and IDEA funding. Per-pupil expenditures are displayed compared to the LEA and DC average.



	State/Local	Federal	Total
School	\$16,702 84.36%	\$3,097 15.64%	\$19,798
LEA	\$18,830 86.29%	\$2,993 13.71%	\$21,823
DC Overall	\$21,002 88.14%	\$2,827 11.86%	\$23,828

Finance (cont.) - Per-pupil Expenditures by Type

Details are provided about the distribution of expenditures between school-level and centralized. School-level expenditures include spending on teacher and administrative salaries, books, supplies, and business costs. Centralized expenditures include the portion of spending at the LEA's central office that are allocated to the school. (Note: LEAs with only one school site do not report separate centralized expenditures)



	School-level expenditures	School share of centralized expenditures	Total
School	\$17,290 87.33%	\$2,508 12.67%	\$19,798
State/Local	\$14,534	\$2,167	
Federal	\$2,756	\$340	
LEA	\$19,127 87.65%	\$2,696 12.35%	\$21,823
State/Local	\$16,463	\$2,367	
Federal	\$2,664	\$329	