

Message from the School

Early Childhood Academy PCS offers many challenging educational programs for students in grades PK3 through 3rd grade. ECA's instructional program has an emphasis on language and literacy while offering educational experiences that expose students to math, science, and the arts.



📍 885 BARNABY STREET SE, Washington, DC 20032

🏠 Ward 8

☎ (202) 373-0035

School Instructional Hours

Monday: 08:30AM - 03:00PM

Tuesday: 08:30AM - 03:00PM

Wednesday: 08:30AM - 03:00PM

Thursday: 08:30AM - 03:00PM

Friday: 08:30AM - 03:00PM

Total Students (2021-22 Ever-Enrolled): 290

Total Teachers: 17

Total School Leaders: 14

Grades Served: PK3, PK4, KG, 1, 2, 3

Principal: Pamela Faulcon

Title-I Status: Yes

Local Education Agency (LEA): Early Childhood Academy PCS

School Uniforms Required: Yes

Bus Line(s): A2, A6, A7, A42, D12, W1

Metro Line(s): Southern Ave

Before Care Offered: Yes

◦ **Cost:** Paid

After Care Offered: Yes

◦ **Cost:** Paid

School Program Information

Not Provided

Parent Organization

Parent Organization Offered: Yes

Parent Organization Contact: Chanille Landcaster
(Chanillelandcaster@gmail.com)

Parent Organization Website:

www.4.files.edl.io/9f06/04/19/21/143921-c04b6a0f-3123-4487-b9d8-0ea8a6644352.pdf

Extracurricular & Enrichment Activities

General Music

Instrumental Music

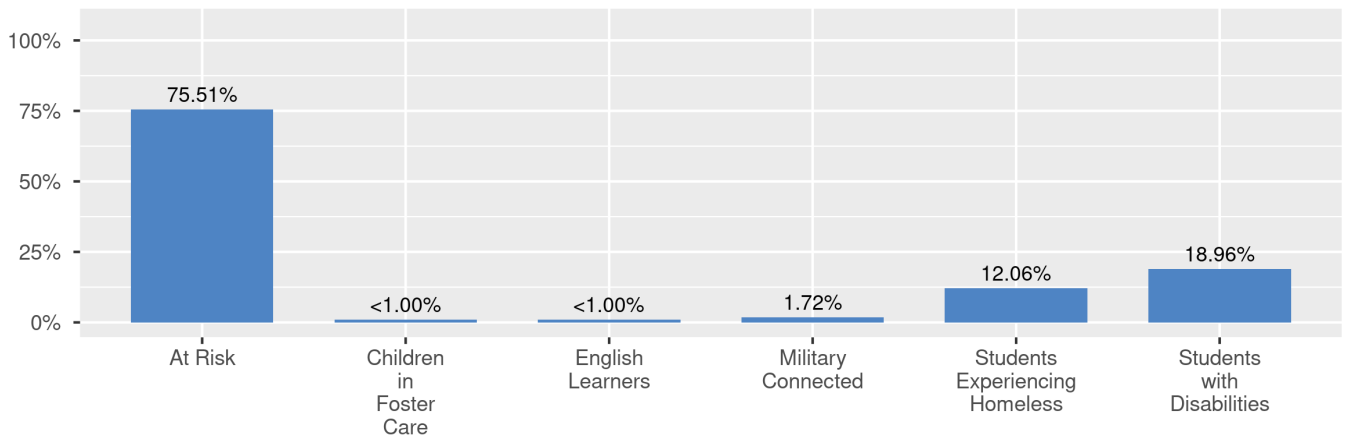
School Enrollment

The ever-enrolled count is the total number of students who are enrolled at any point during the school year; a student who attends a school for one day or 180 days is counted the same way. For this reason, the ever-enrolled count will always be larger than the audit count.

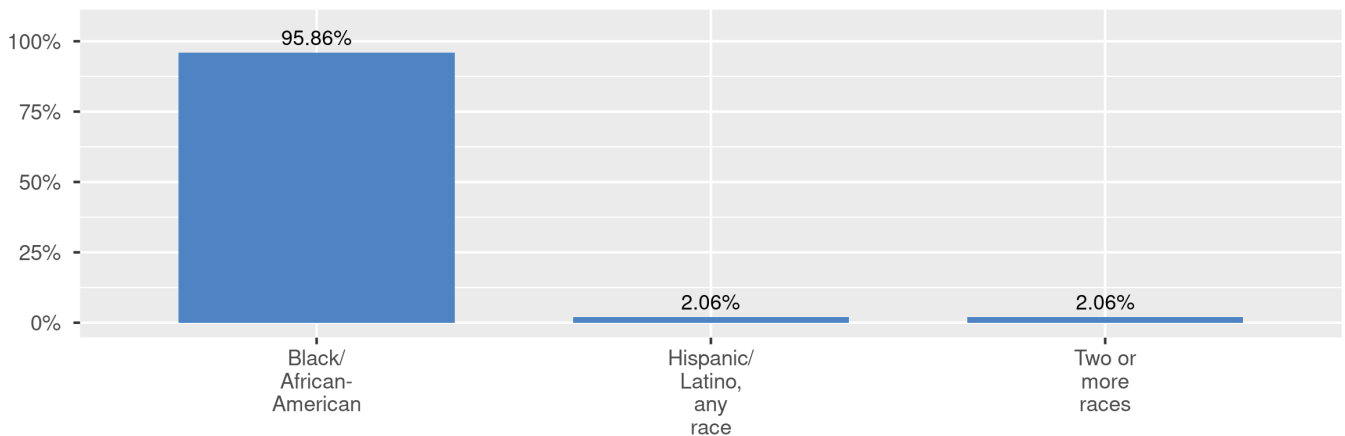
2020-21 Ever-Enrolled by Grade Level

PK3	PK4	KG	Grade 01	Grade 02	Grade 03
47	52	50	50	51	40

Enrollment by Student Group



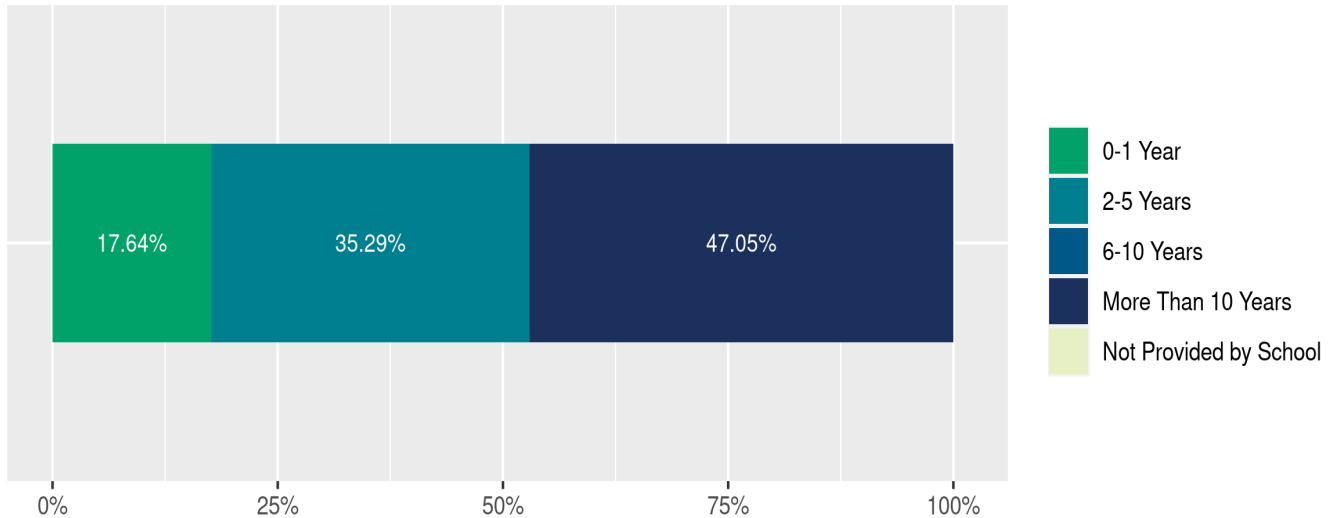
Enrollment by Race/Ethnicity



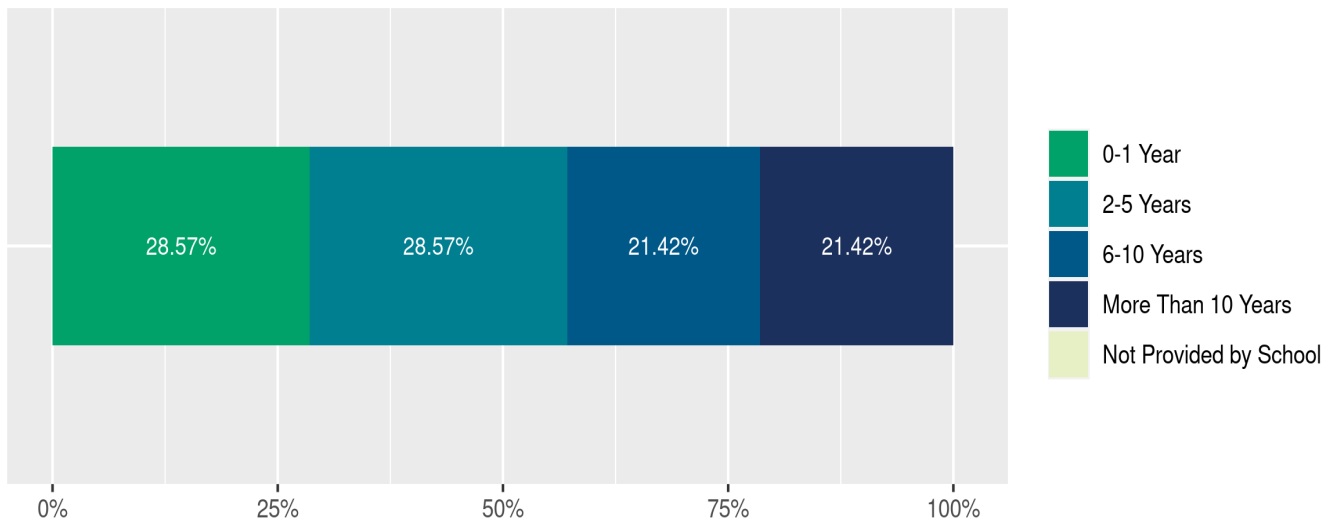
Teacher and School Leader Data

This page includes information about teacher experience levels in DC Public Schools and public charter schools. For DC Public Schools, it also includes information about credentialed and in-field teachers.

Teacher - Years of Experience



School Leader - Years of Experience



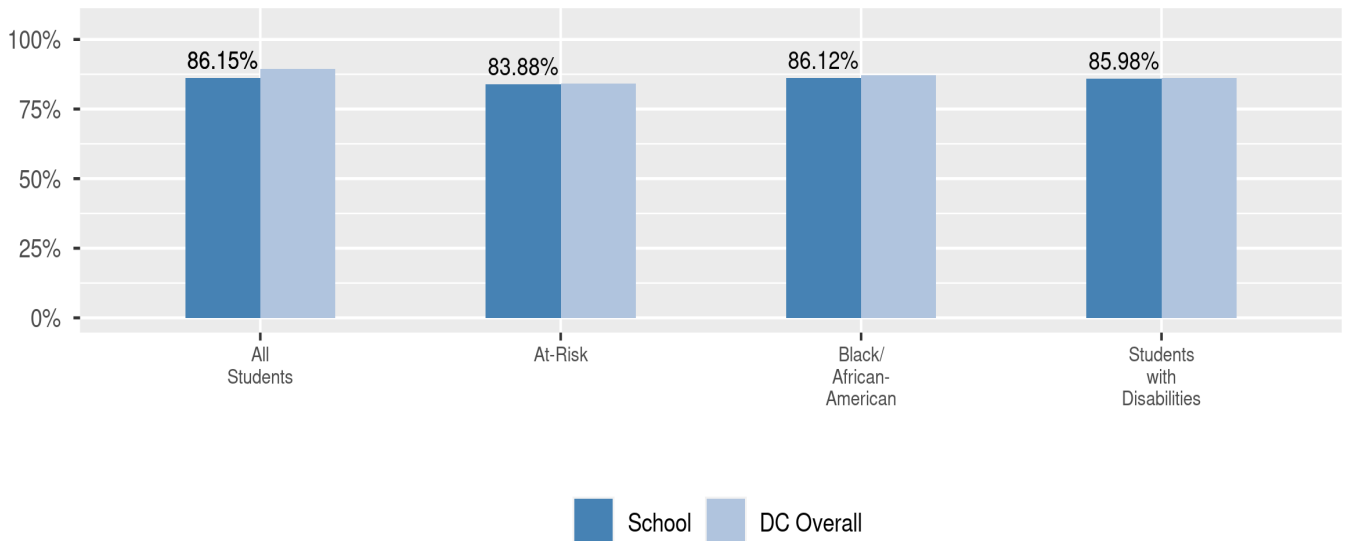
School Safety and Discipline

Information about discipline and school safety in DC, in accordance with the U.S. Department of Education's Civil Rights Data collection, including suspensions and expulsions for students, school related arrests, reported incidents of violence, bullying, and harassment are available in the OSSE Discipline report and data files (<https://osse.dc.gov/page/data-and-reports-0>).

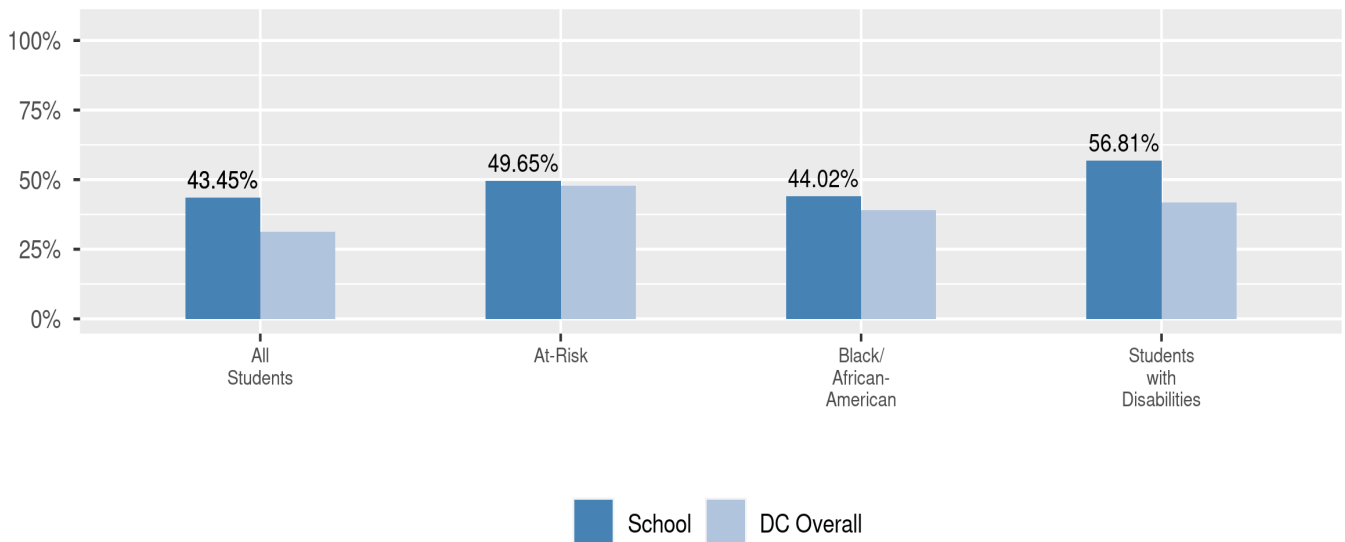
Attendance

Review information on attendance below, including in-seat attendance for all students (there is a separate measure of attendance for pre-K students, since pre-K is not compulsory), and the percentage of students chronically absent, meaning that they miss at least 10% of the school days for which they are enrolled throughout the school year at the school. Note: Due to variations in schools schedules, attendance data may have been collected differently by schools on synchronous and asynchronous learning days. As a result attendance data is unique to this school year and not necessarily comparable to prior years.

In-Seat Attendance

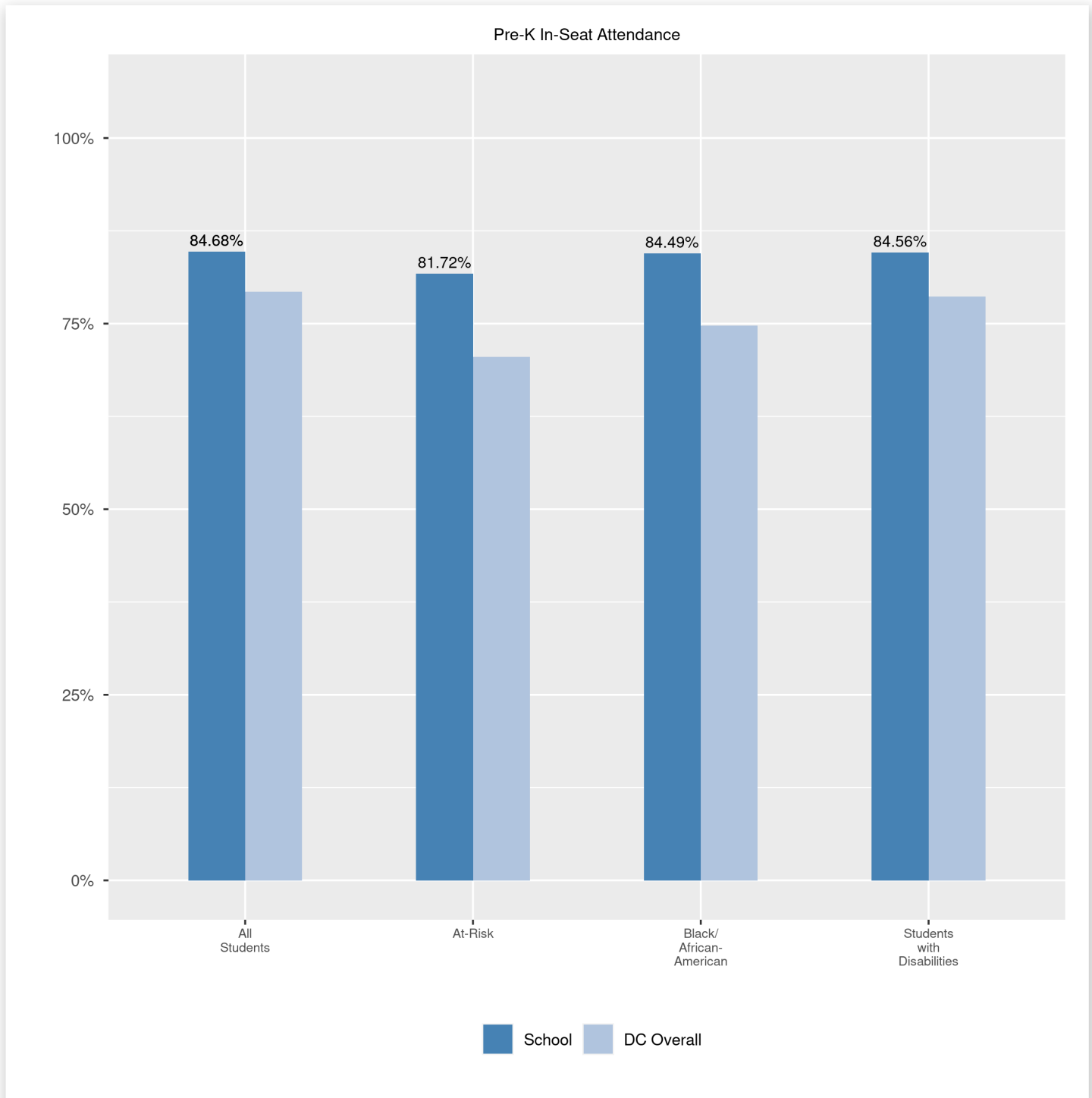


Chronic Absenteeism



Pre-K In-Seat Attendance

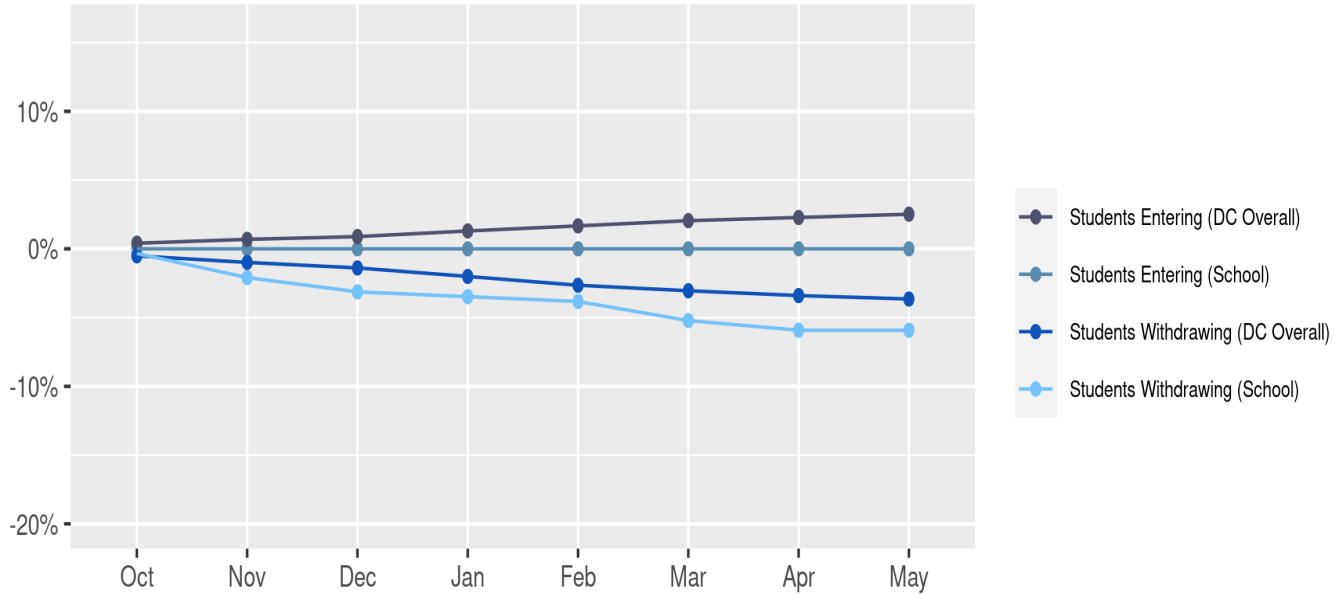
Review information on attendance at the school. This includes in-seat attendance for all students (including a separate measure of attendance for pre-K students, since pre-K is not compulsory), the percentage of students chronically absent, meaning that they miss at least 10% of the school days for which they are enrolled throughout the school year at the school.



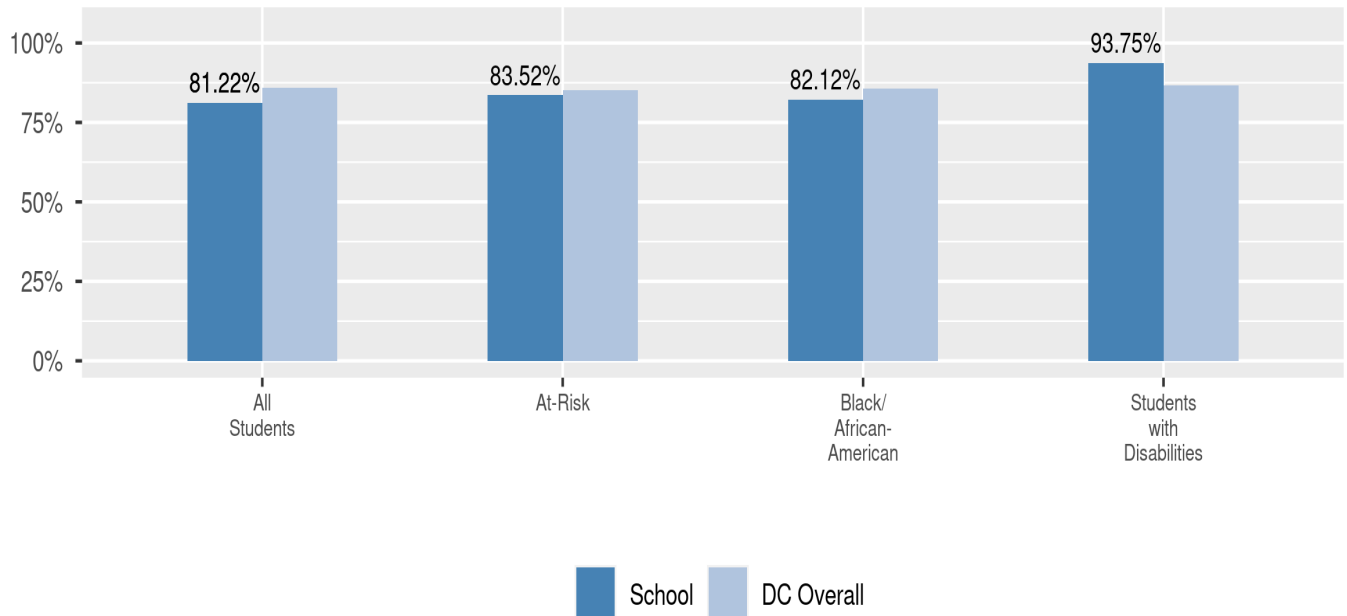
Student Enrollment Changes

Explore information on how much the population at the school changes throughout the year or from year to year. It shows information about changes in enrollment, including whether students leave or enter the school mid-year, and whether eligible students choose to re-enroll in the school.

Mobility



Re-Enrollment



Finance

Per-pupil expenditures represent the average amount of money spent on educating each student. In other words, this value represents the total amount of actual school expenditures divided by the number of students in the school.

2021 Per-pupil Expenditures

Per-pupil expenditure amount is calculated by dividing the total school expenditures by the October enrollment audit count of public school students.

Per-pupil: \$23,200

October Enrollment Audit Count: 287

Total School Expenditures: \$6,658,292

Total Excluded Expenditures: \$1,384,818

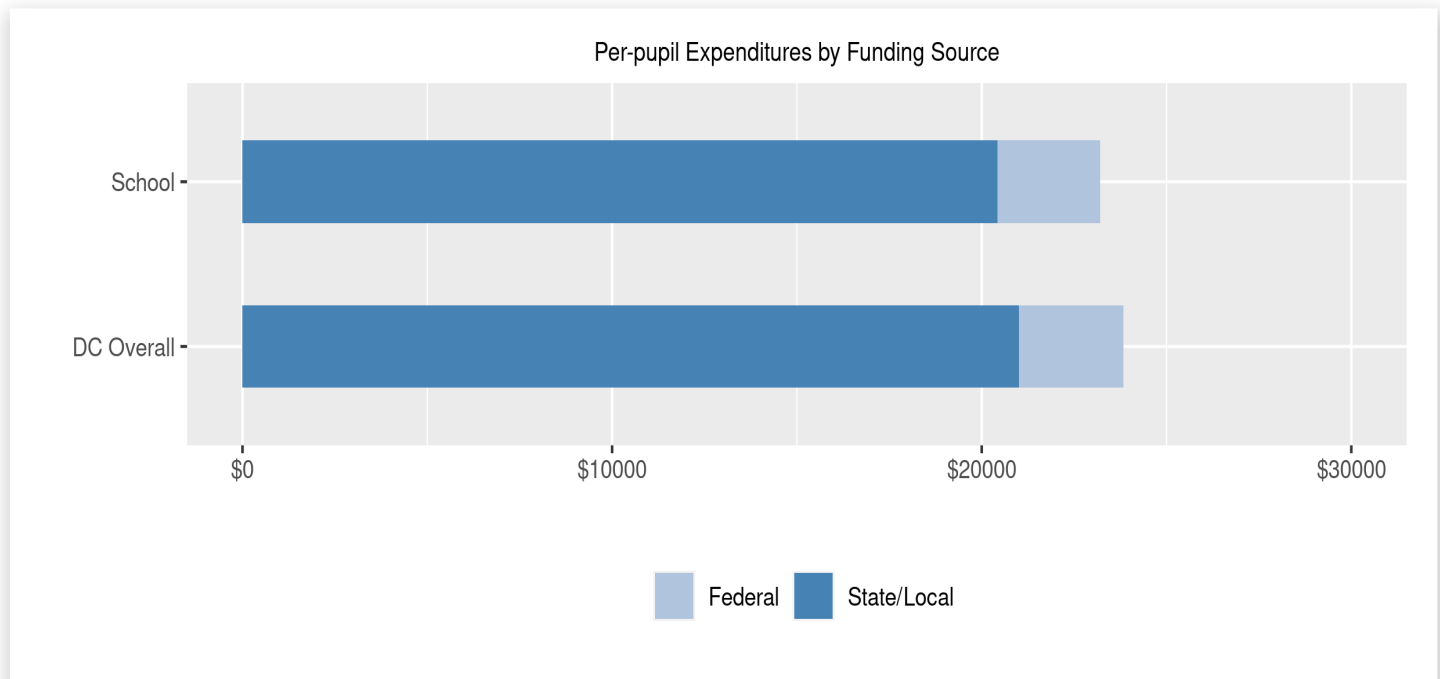
Excluded expenditures include: debt service, capital expenditures, construction and capital improvements, community service operations, and expenditures sourced from private funds (such as parent fees and corporate or charitable donations.) These are not included in the per-pupil expenditure calculation because they are considered outside of the day-to-day operation of the school.

2021 Total Expenditures \$8,043,110

The sum of total school and excluded expenditures is the total amount of money the LEA spent for the fiscal year.

Per-pupil Expenditures by Funding Source

Details are provided about the funding sources for per-pupil expenditures. State/local sources represent revenue received directly from DC, including local grants and per-pupil funding. Federal sources include federal revenue, such as Title I funds and IDEA funding. Per-pupil expenditures are displayed compared to the LEA and DC average.



	State/Local	Federal	Total
School	\$20,433 88.07%	\$2,767 11.93%	\$23,200
DC Overall	\$21,002 88.14%	\$2,827 11.86%	\$23,828