

AppleTree Early Learning Center PCS - Lincoln Park

Message from the School

AELPCS implements a research-based instructional program that supports the development of young children's language, literacy, and behavioral skills as well as their understanding of the world around them. The school uses a comprehensive, integrated curriculum designed to engage young children in playful activities and to build on their natural eagerness to learn.



📍 138 12TH STREET NE, Washington, DC 20002
🏠 Ward 6
☎ (202) 621-6581

School Instructional Hours

Monday: 08:45AM - 03:15PM
Tuesday: 08:45AM - 03:15PM
Wednesday: 08:45AM - 03:15PM
Thursday: 08:45AM - 03:15PM
Friday: 08:45AM - 03:15PM

Total Students (2020-21 Ever-Enrolled): 61

Total Teachers: 9

Total School Leaders: 1

Grades Served: PK3, PK4

Principal: Daisha Wise

Title-I Status: No

Local Education Agency (LEA): AppleTree Early Learning PCS

School Uniforms Required: Yes

Bus Line(s): 90, 92, 93

Metro Line(s): Eastern Market

Before Care Offered: Yes

◦ **Cost:** Sliding Scale

After Care Offered: Yes

◦ **Cost:** Sliding Scale

School Program Information

Extended day

Parent Organization

Parent Organization Offered: Yes

Parent Organization Contact: Teria Powell
(teria.powell@appletreeinstitute.org)

Parent Organization Website: Not Provided

Extracurricular & Enrichment Activities

Arts

Dance

Monthly activities for the entire family

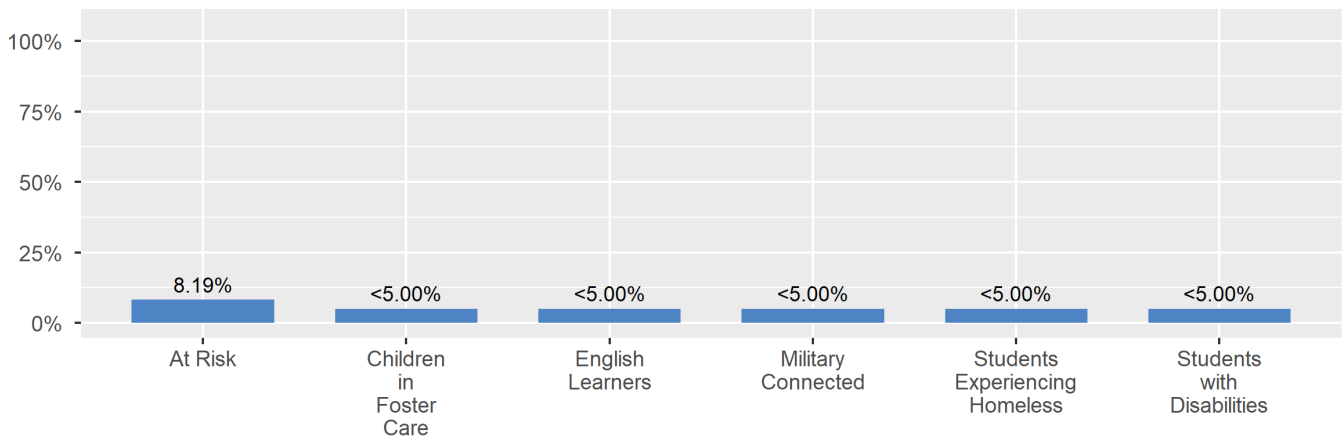
School Enrollment

The ever-enrolled count is the total number of students who are enrolled at any point during the school year; a student who attends a school for one day or 180 days is counted the same way. For this reason, the ever-enrolled count will always be larger than the audit count.

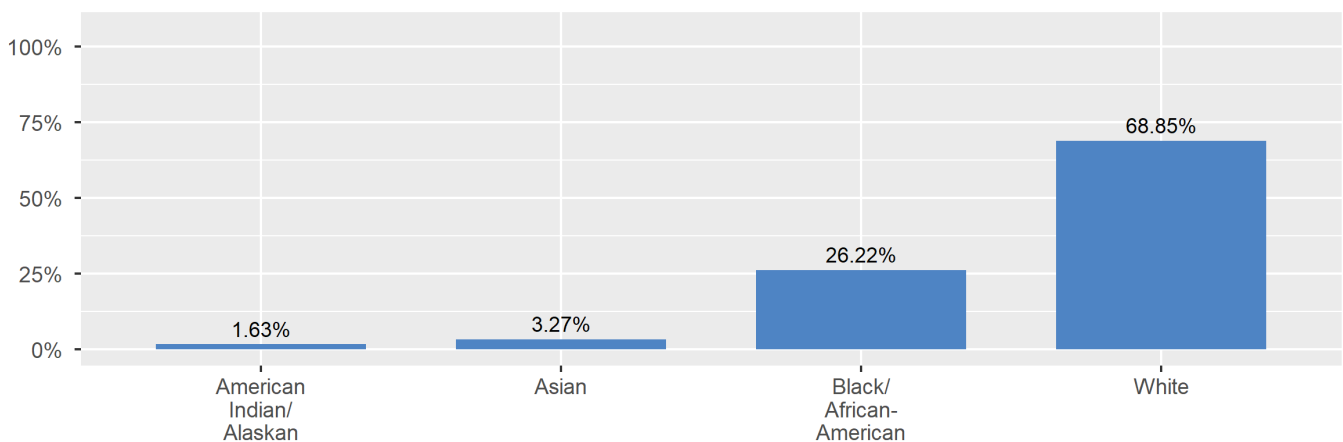
2020-21 Ever-Enrolled by Grade Level

| PK3 | PK4 |
|-----|-----|
| 23 | 38 |

Enrollment by Student Group



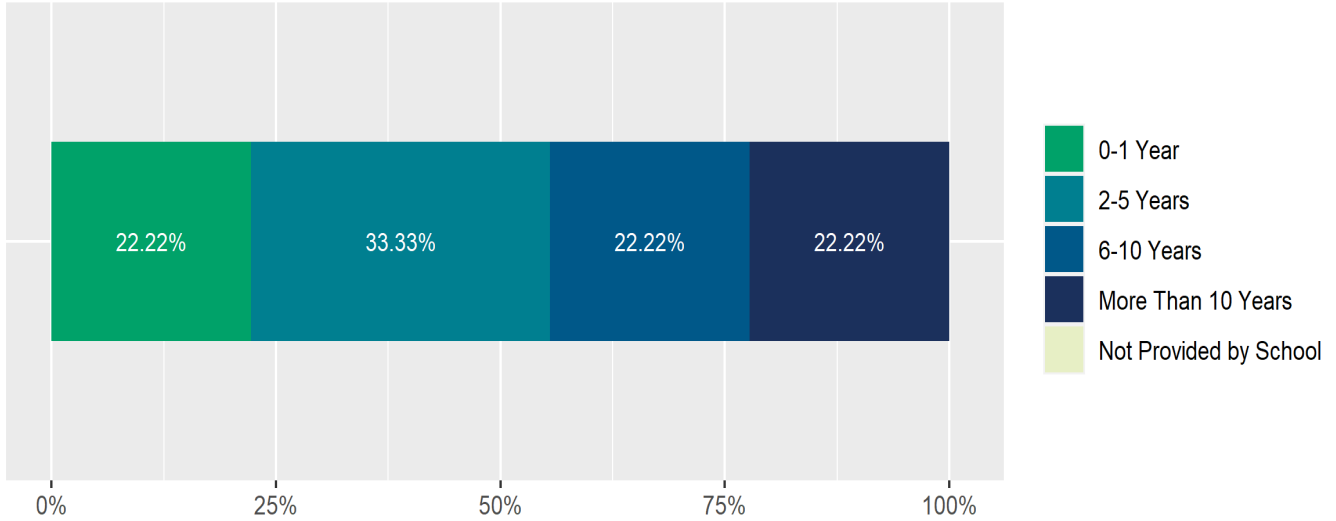
Enrollment by Race/Ethnicity



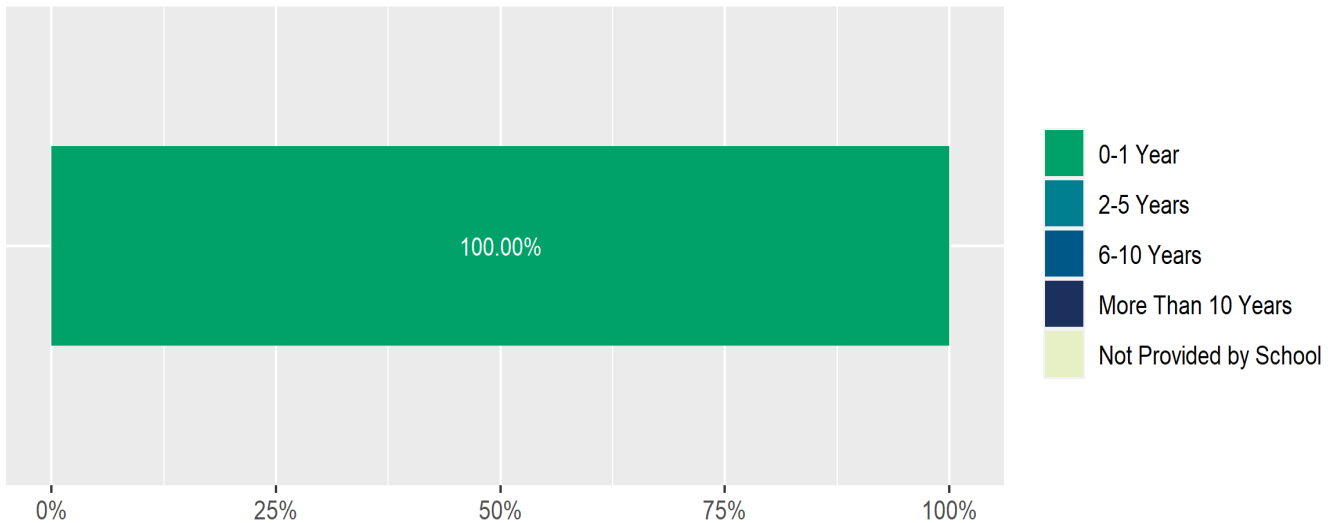
Teacher and School Leader Data

This page includes information about teacher experience levels in DC Public Schools and public charter schools. For DC Public Schools, it also includes information about credentialed and in-field teachers.

Teacher - Years of Experience



School Leader - Years of Experience

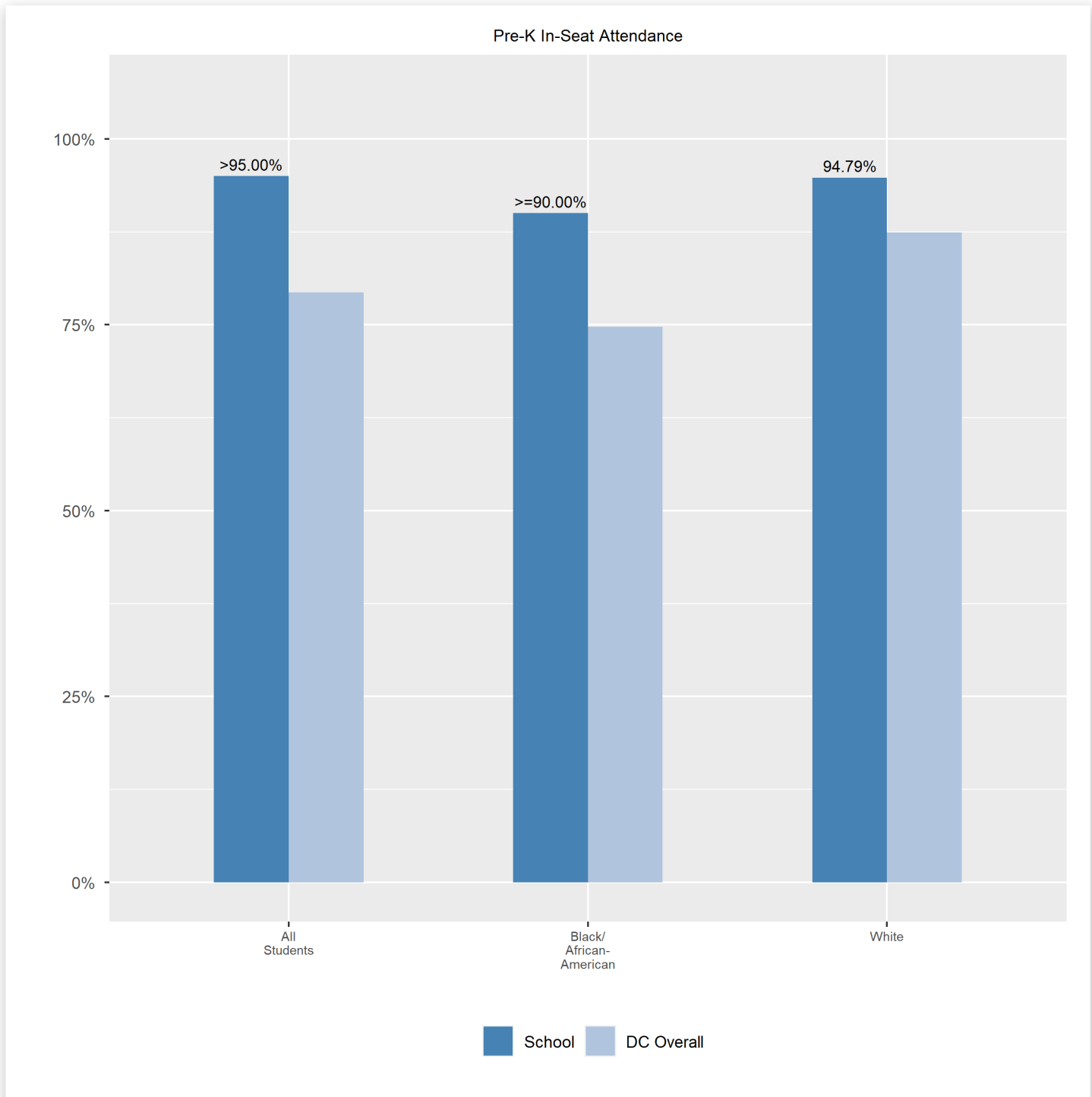


School Safety and Discipline

Information about discipline and school safety in DC, in accordance with the U.S. Department of Education's Civil Rights Data collection, including suspensions and expulsions for students, school related arrests, reported incidents of violence, bullying, and harassment are available in the OSSE Discipline report and data files (<https://osse.dc.gov/page/data-and-reports-0>).

Attendance

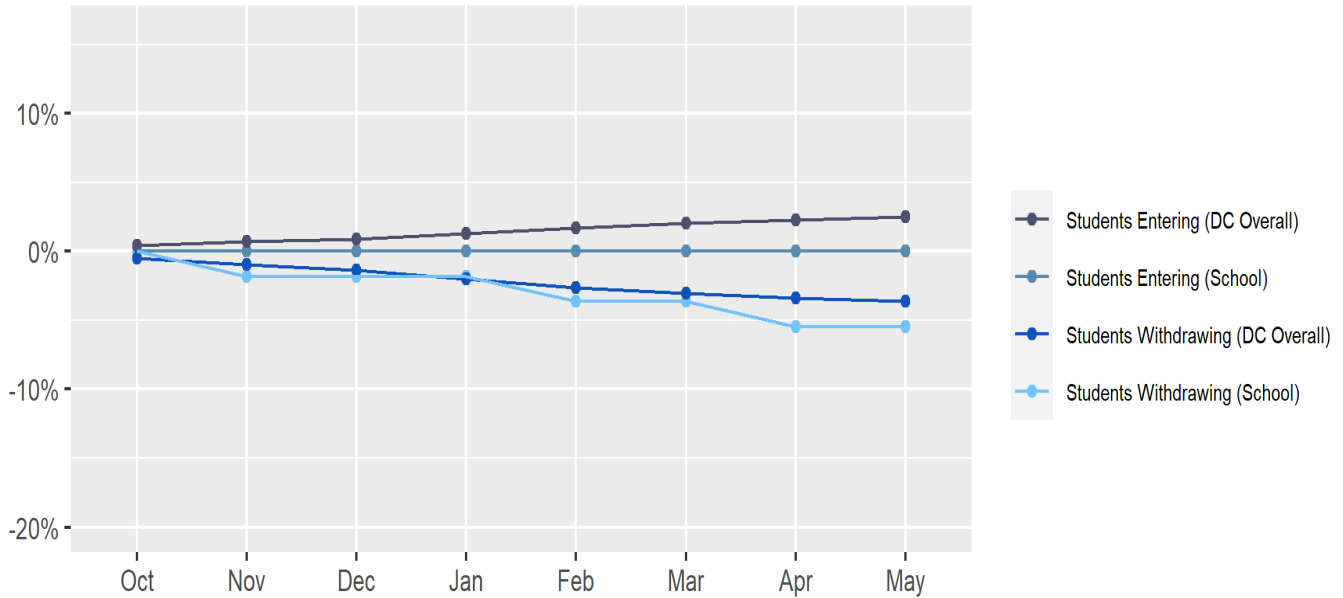
Review information on attendance below, including in-seat attendance for all students (there is a separate measure of attendance for pre-K students, since pre-K is not compulsory), and the percentage of students chronically absent, meaning that they miss at least 10% of the school days for which they are enrolled throughout the school year at the school. Note: Due to variations in schools schedules, attendance data may have been collected differently by schools on synchronous and asynchronous learning days. As a result attendance data is unique to this school year and not necessarily comparable to prior years.



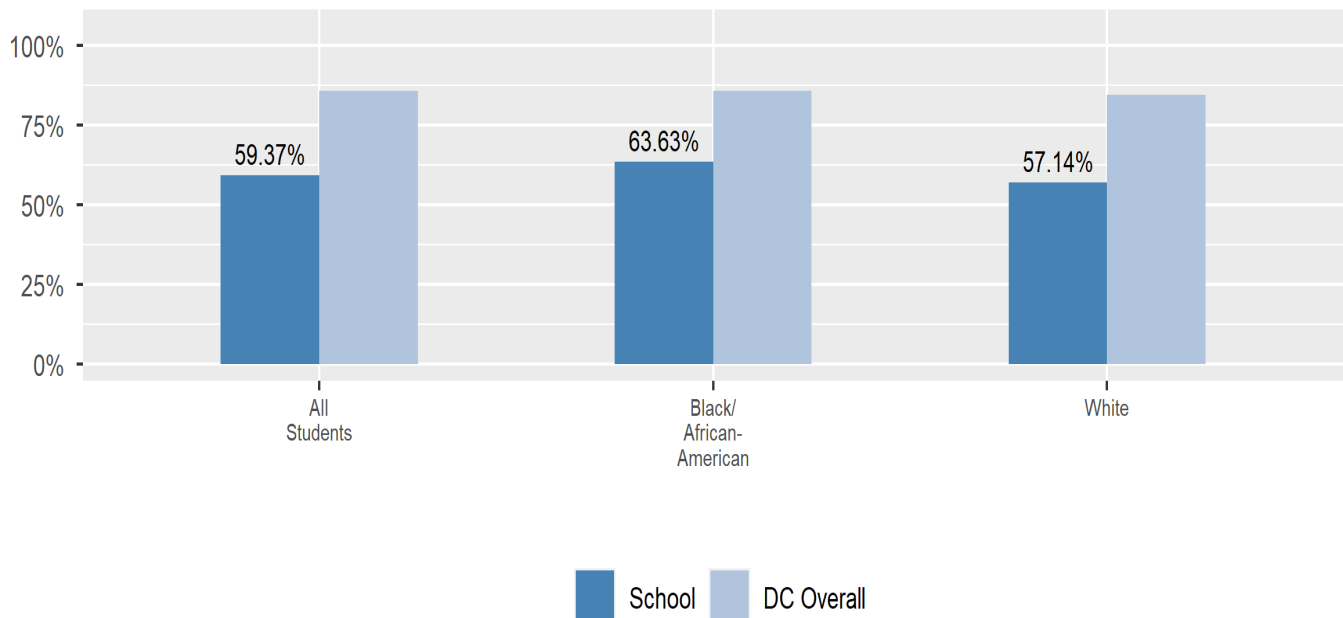
Student Enrollment Changes

Explore information on how much the population at the school changes throughout the year or from year to year. It shows information about changes in enrollment, including whether students leave or enter the school mid-year, and whether eligible students choose to re-enroll in the school.

Mobility



Re-Enrollment



Finance

Per-pupil expenditures represent the average amount of money spent on educating each student. In other words, this value represents the total amount of actual school expenditures divided by the number of students in the school.

2021 Per-pupil Expenditures

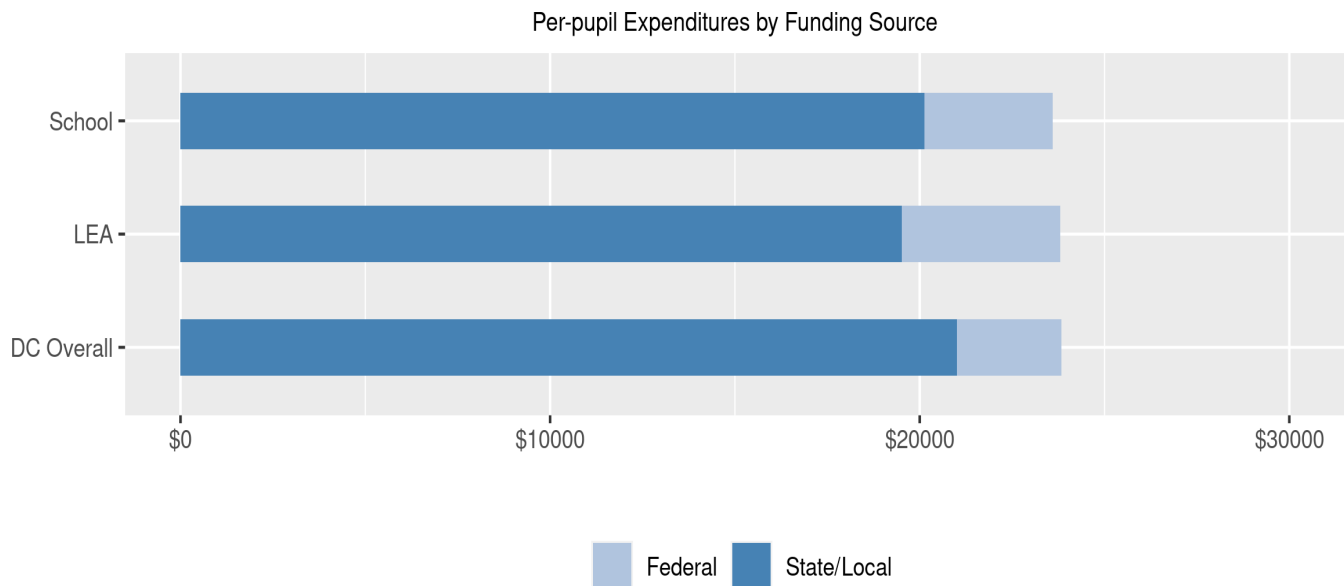
Per-pupil expenditure amount is calculated by dividing the total school expenditures by the October enrollment audit count of public school students.

Per-pupil: \$23,607

October Enrollment Audit Count: 55

Per-pupil Expenditures by Funding Source

Details are provided about the funding sources for per-pupil expenditures. State/local sources represent revenue received directly from DC, including local grants and per-pupil funding. Federal sources include federal revenue, such as Title I funds and IDEA funding. Per-pupil expenditures are displayed compared to the LEA and DC average.

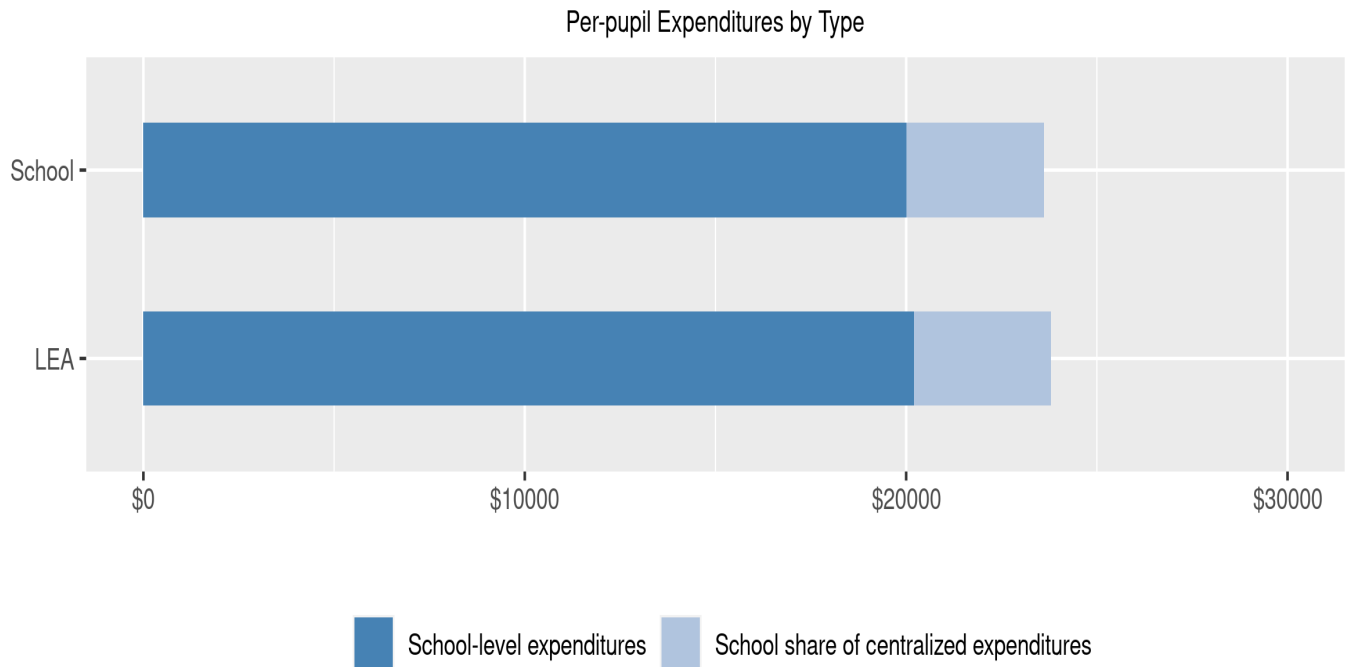


| | State/Local | Federal | Total |
|------------|-----------------|----------------|----------|
| School | \$20,125 85.25% | \$3,481 14.75% | \$23,607 |
| LEA | \$19,520 82.03% | \$4,275 17.97% | \$23,795 |
| DC Overall | \$21,002 88.14% | \$2,827 11.86% | \$23,828 |

AppleTree Early Learning Center PCS - Lincoln Park

Finance (cont.) - Per-pupil Expenditures by Type

Details are provided about the distribution of expenditures between school-level and centralized. School-level expenditures include spending on teacher and administrative salaries, books, supplies, and business costs. Centralized expenditures include the portion of spending at the LEA's central office that are allocated to the school. (Note: LEAs with only one school site do not report separate centralized expenditures)



| | School-level expenditures | School share of centralized expenditures | Total |
|-------------|---------------------------|--|----------|
| School | \$20,013 84.78% | \$3,594 15.22% | \$23,607 |
| State/Local | \$16,701 | \$3,424 | |
| Federal | \$3,312 | \$170 | |
| LEA | \$20,201 84.9% | \$3,594 15.1% | \$23,795 |
| State/Local | \$16,096 | \$3,424 | |
| Federal | \$4,105 | \$170 | |