

## Message from the School

Ida B. Wells MS is a new middle school that will open with a founding 6th grade cohort of students. Our school will add a grade year until it is a full 6th - 8th middle school in SY21-22. Ida B. Wells MS will be a comprehensive middle school with a rigorous and robust academic program, including school-wide enrichment learning experiences focused on social action. We provide a loving and challenging environment for all, incorporating strategies that are developmentally relevant for adolescent students.



405 Sheridan St. NW, Washington, DC 20011

Ward 4

(202) 671-0693

## School Instructional Hours

**Monday:** 09:00AM - 03:30PM

**Tuesday:** 09:00AM - 03:30PM

**Wednesday:** 09:00AM - 03:30PM

**Thursday:** 09:00AM - 03:30PM

**Friday:** 09:00AM - 03:30PM

**Total Students (2020-21 Ever-Enrolled):** 383

**Total Teachers:** 29

**Total School Leaders:** 8

**Grades Served:** 6, 7, 8

**Principal:** Megan Vroman

**Title-I Status:** Yes

**Local Education Agency (LEA):** District of Columbia Public Schools

**School Uniforms Required:** Yes

**Bus Line(s):** 52, 54, 59, 62, 63, 70, 79

**Metro Line(s):** Red Line: Takoma Station

**Before Care Offered:** No

**After Care Offered:** No

## School Program Information

Blended Learning

Interscholastic Sports

Online learning

Restorative Justice Program

## Parent Organization

**Parent Organization**

**Offered:** No

## Extracurricular & Enrichment Activities

School-wide Enrichment Model

DC Scores Poetry and Soccer

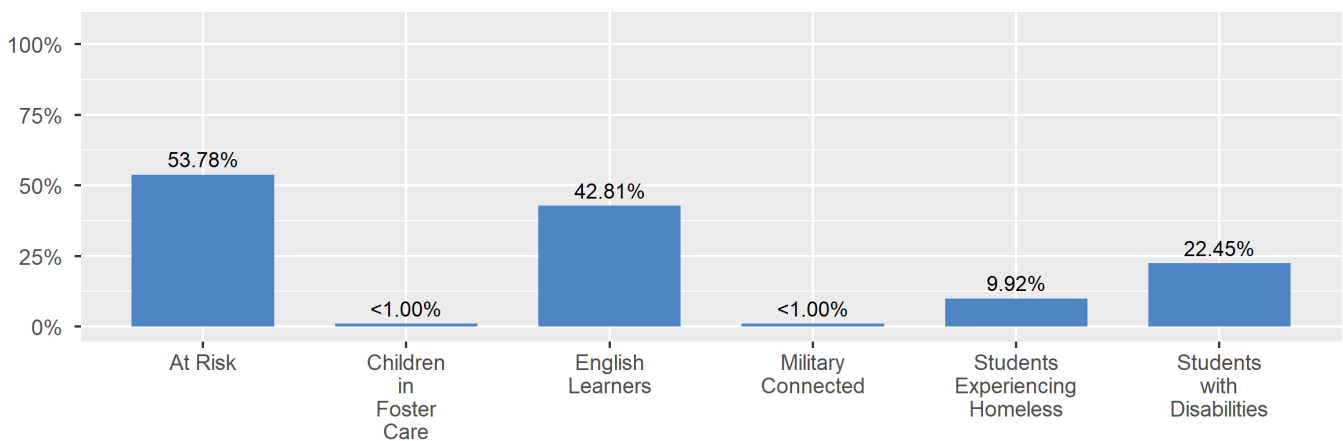
## School Enrollment

The ever-enrolled count is the total number of students who are enrolled at any point during the school year; a student who attends a school for one day or 180 days is counted the same way. For this reason, the ever-enrolled count will always be larger than the audit count.

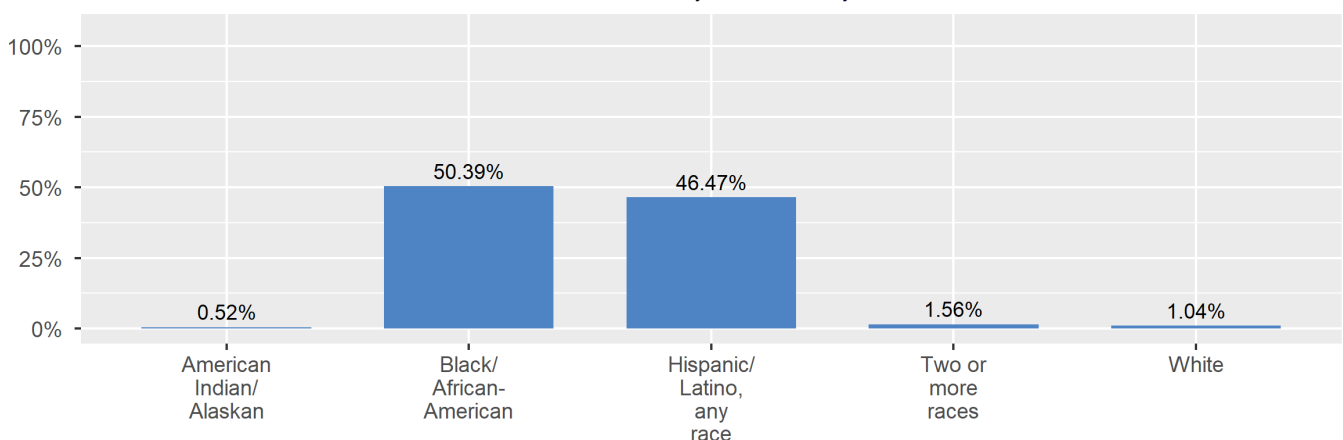
2020-21 Ever-Enrolled by Grade Level

Grade 06	Grade 07
191	192

Enrollment by Student Group

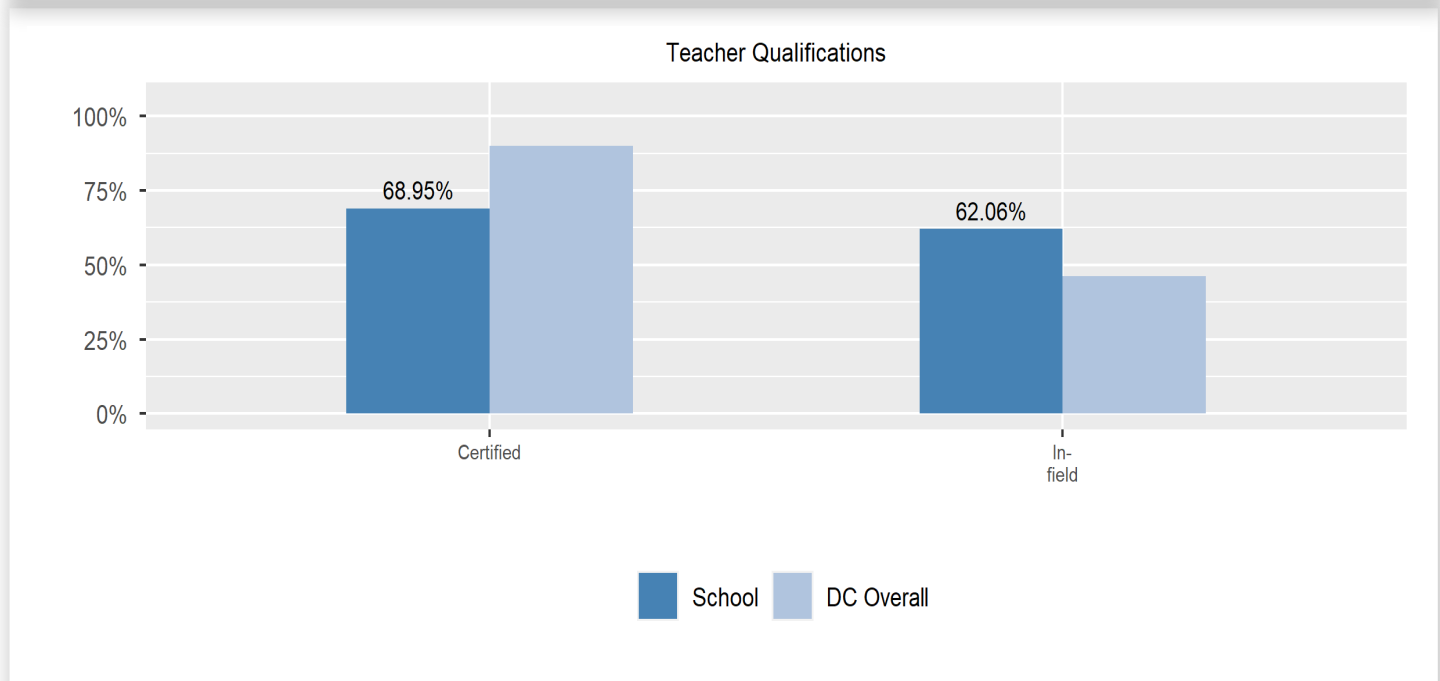
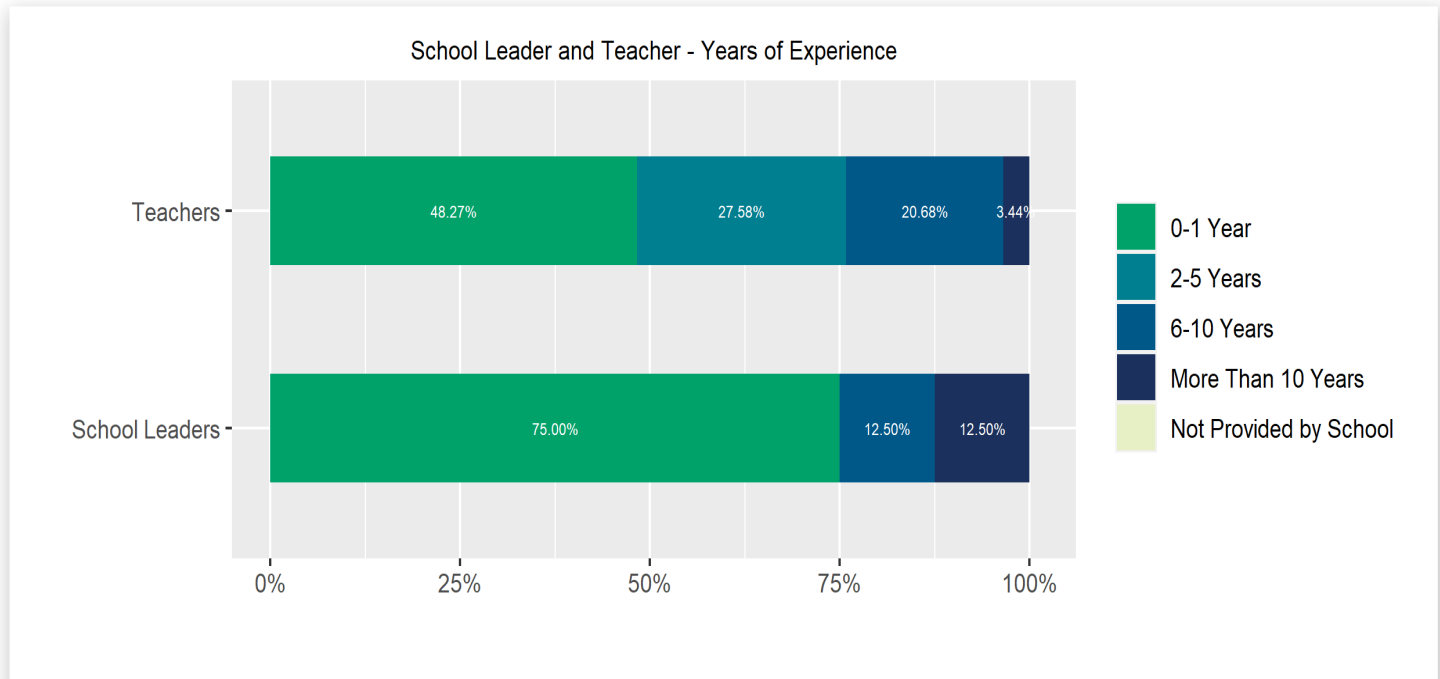


Enrollment by Race/Ethnicity



## Teacher and School Leader Data

This page includes information about teacher experience levels in DC Public Schools and public charter schools. For DC Public Schools, it also includes information about credentialed and in-field teachers.



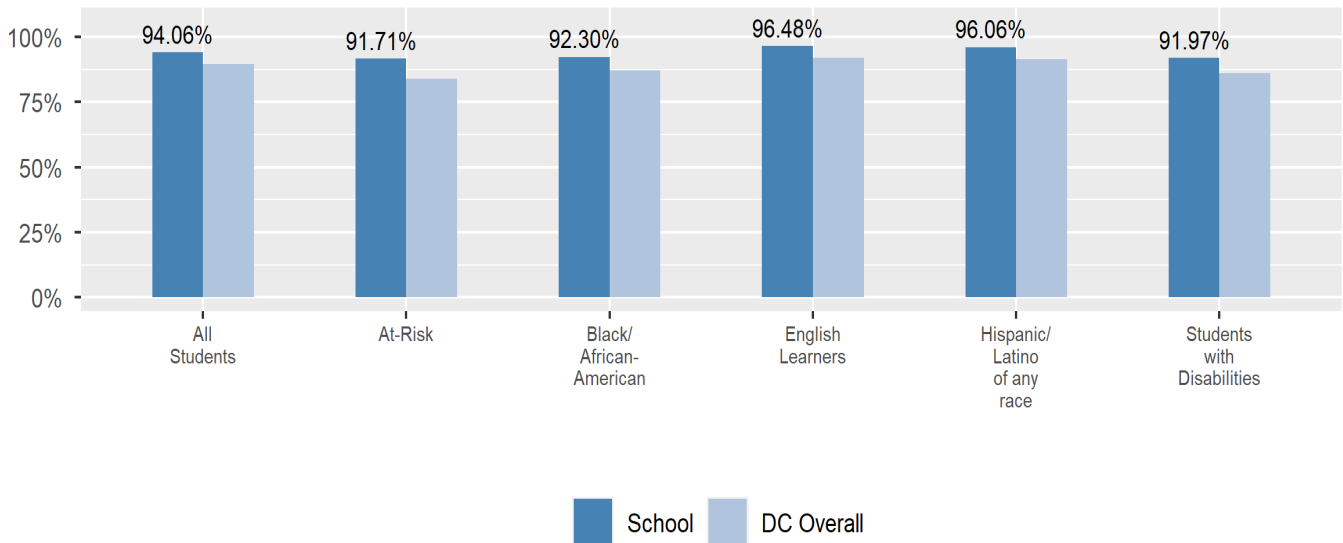
## School Safety and Discipline

Information about discipline and school safety in DC, in accordance with the U.S. Department of Education's Civil Rights Data collection, including suspensions and expulsions for students, school related arrests, reported incidents of violence, bullying, and harassment are available in the OSSE Discipline report and data files (<https://osse.dc.gov/page/data-and-reports-0>).

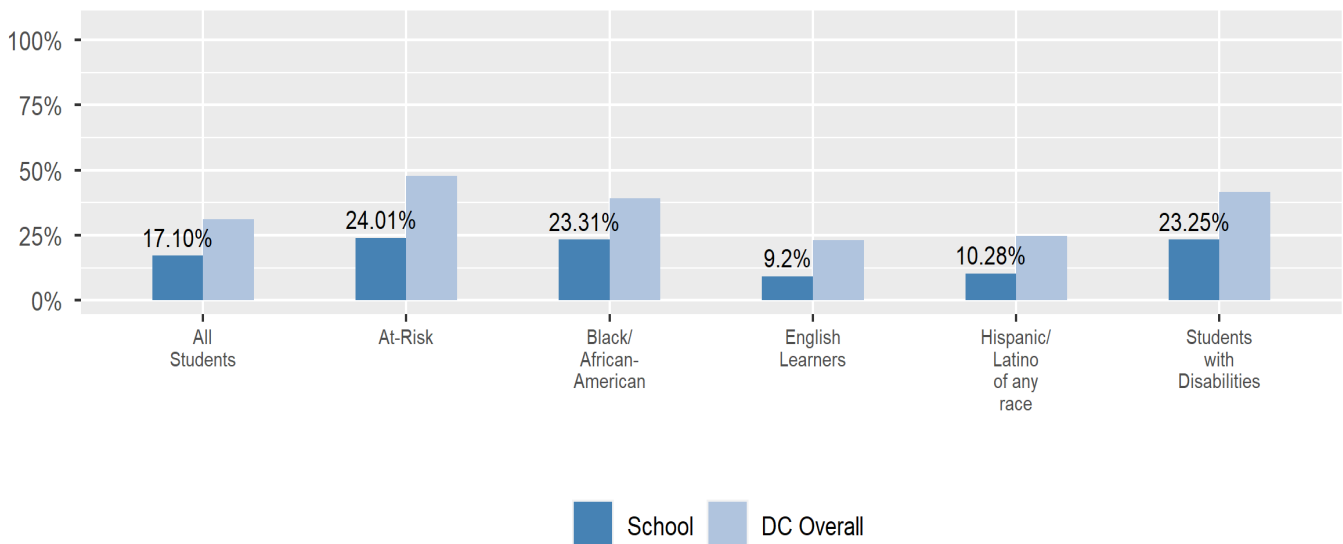
## Attendance

Review information on attendance below, including in-seat attendance for all students (there is a separate measure of attendance for pre-K students, since pre-K is not compulsory), and the percentage of students chronically absent, meaning that they miss at least 10% of the school days for which they are enrolled throughout the school year at the school. Note: Due to variations in schools schedules, attendance data may have been collected differently by schools on synchronous and asynchronous learning days. As a result attendance data is unique to this school year and not necessarily comparable to prior years.

In-Seat Attendance



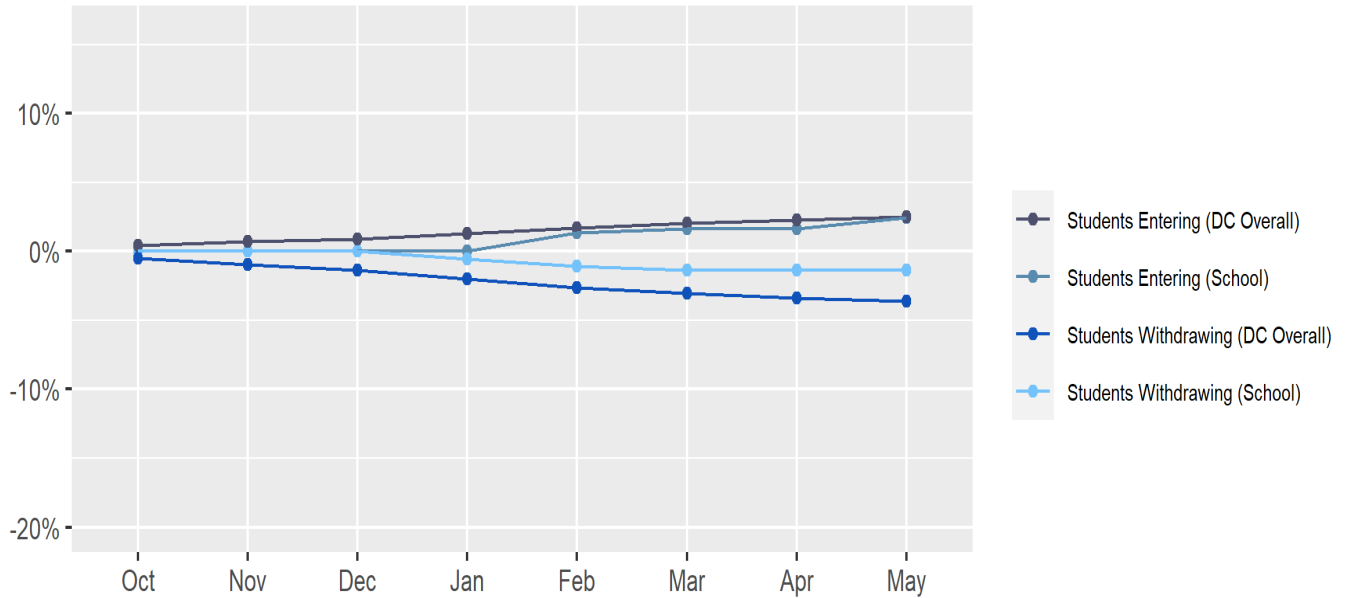
Chronic Absenteeism



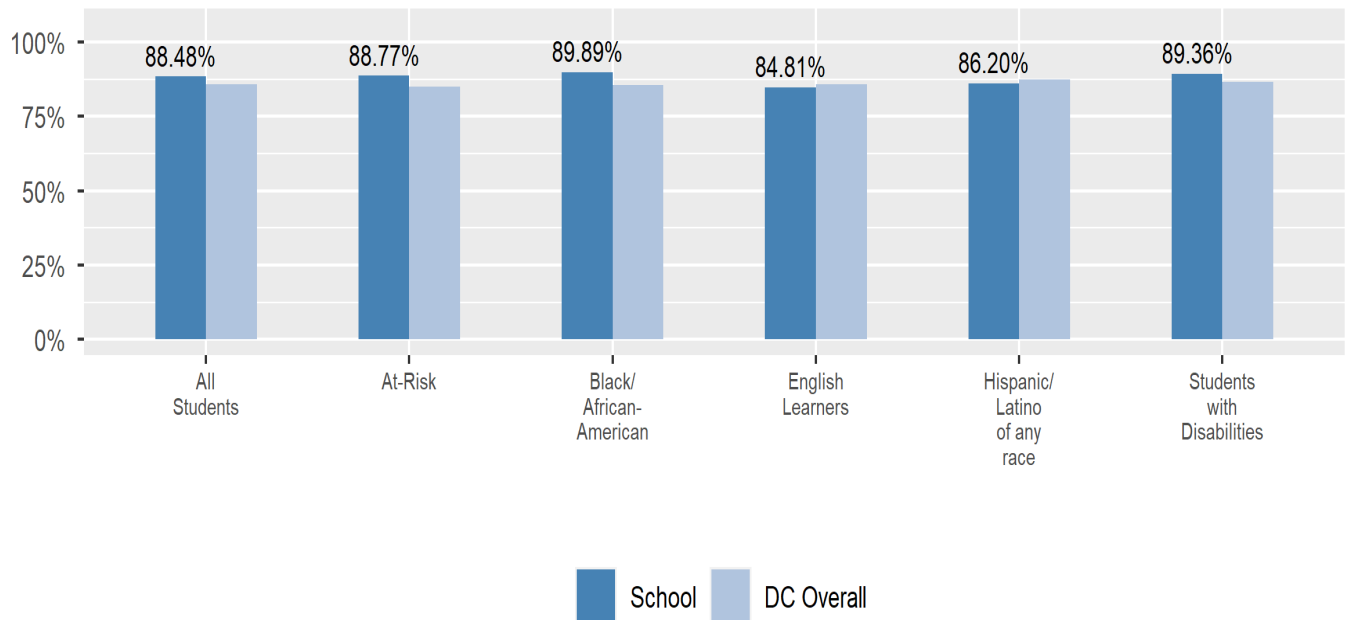
## Student Enrollment Changes

Explore information on how much the population at the school changes throughout the year or from year to year. It shows information about changes in enrollment, including whether students leave or enter the school mid-year, and whether eligible students choose to re-enroll in the school.

Mobility



Re-Enrollment



## Finance

Per-pupil expenditures represent the average amount of money spent on educating each student. In other words, this value represents the total amount of actual school expenditures divided by the number of students in the school.

### 2021 Per-pupil Expenditures

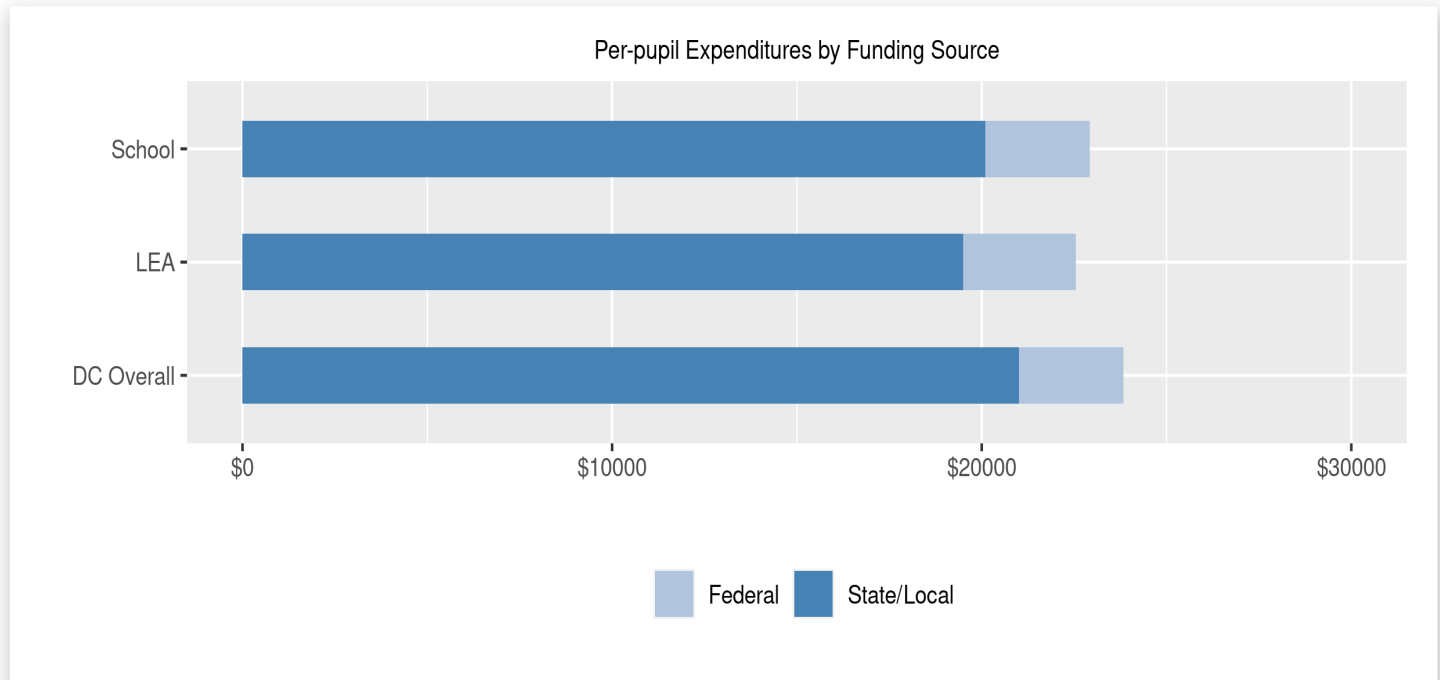
Per-pupil expenditure amount is calculated by dividing the total school expenditures by the October enrollment audit count of public school students.

**Per-pupil: \$22,925**

**October Enrollment Audit Count: 370**

### Per-pupil Expenditures by Funding Source

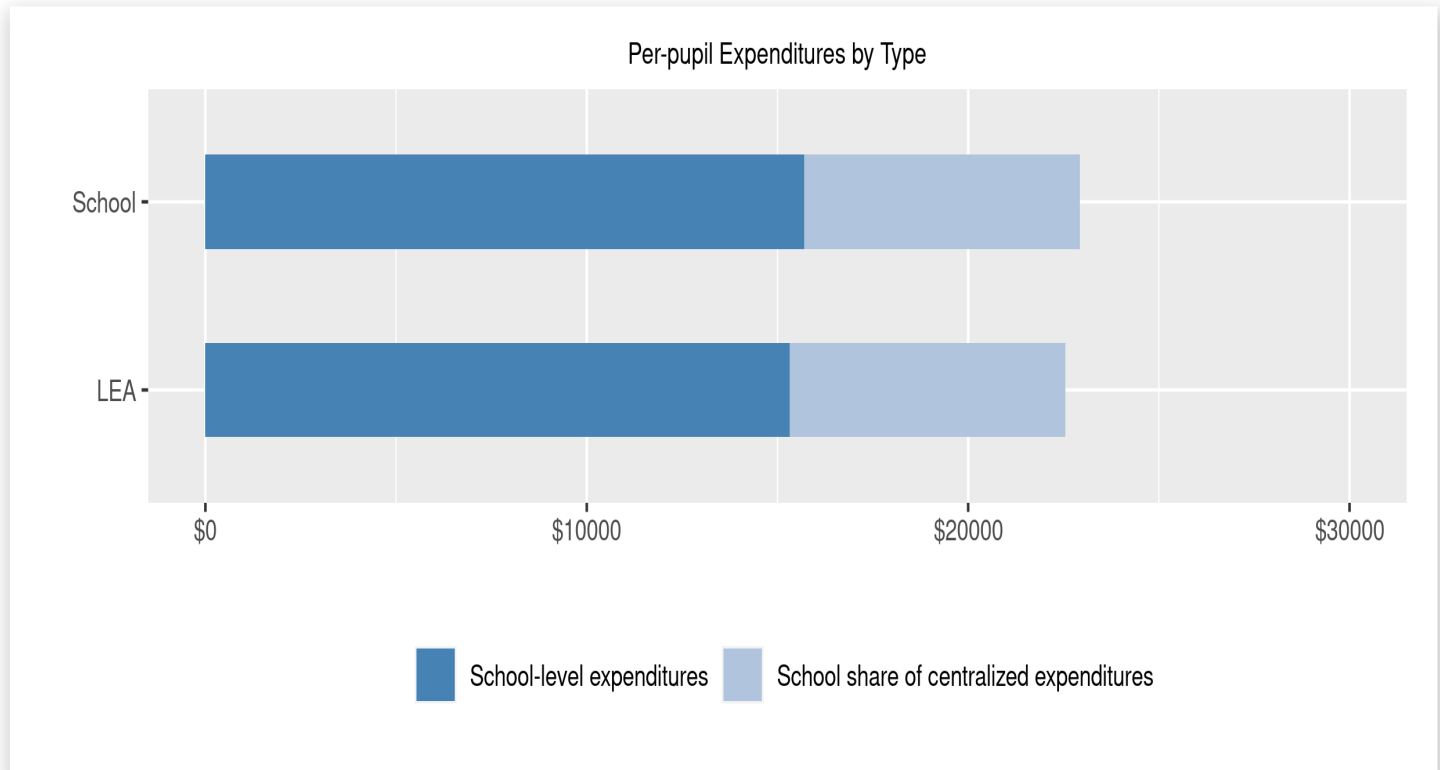
Details are provided about the funding sources for per-pupil expenditures. State/local sources represent revenue received directly from DC, including local grants and per-pupil funding. Federal sources include federal revenue, such as Title I funds and IDEA funding. Per-pupil expenditures are displayed compared to the LEA and DC average.



	State/Local	Federal	Total
School	\$20,096 87.66%	\$2,829 12.34%	\$22,925
LEA	\$19,494 86.44%	\$3,059 13.56%	\$22,553
DC Overall	\$21,002 88.14%	\$2,827 11.86%	\$23,828

## Finance (cont.) - Per-pupil Expenditures by Type

Details are provided about the distribution of expenditures between school-level and centralized. School-level expenditures include spending on teacher and administrative salaries, books, supplies, and business costs. Centralized expenditures include the portion of spending at the LEA's central office that are allocated to the school. (Note: LEAs with only one school site do not report separate centralized expenditures)



	School-level expenditures	School share of centralized expenditures	Total
School	\$15,696 68.47%	\$7,229 31.53%	\$22,925
State/Local	\$15,073	\$5,024	
Federal	\$623	\$2,205	
LEA	\$15,324 67.95%	\$7,229 32.05%	\$22,553
State/Local	\$14,470	\$5,024	
Federal	\$854	\$2,205	