

Message from the School

Columbia Heights Educational Campus is a unique globally themed bilingual campus that serves grades 6 through 12 and prepares all its students for success in college and the careers. Students can take a full bilingual program through the 12th grade.



3101 16th St. NW, Washington, DC 20010
 Ward 1
 (202) 939-7700

School Instructional Hours

Monday: 09:00AM - 03:30PM
Tuesday: 09:00AM - 03:30PM
Wednesday: 09:00AM - 03:30PM
Thursday: 09:00AM - 03:30PM
Friday: 09:00AM - 03:30PM

Total Students (2020-21 Ever-Enrolled): 1509

Total Teachers: 124

Total School Leaders: 13

Grades Served: 6, 7, 8, 9, 10, 11, 12

Principal: Maria Tukeva

Title-I Status: Yes

Local Education Agency (LEA): District of Columbia Public Schools

School Uniforms Required: Yes

Bus Line(s): 42, 43, 52, 54, 59, 64, H2, H4, H8, S2, S9, DC Circulator

Metro Line(s): Green/Yellow Lines: Columbia Heights Station

Before Care Offered: No

After Care Offered: No

School Program Information

Extended day
 Interscholastic Sports
 JROTC
 STEM Focus
 Restorative Justice Program
 School Garden

Parent Organization

Parent Organization Offered: Yes

Parent Organization Contact: Victor Molina
 (victor.molina@k12.dc.gov)

Parent Organization Website:
www.dcps.dc.gov/page/parent-organizations

Extracurricular & Enrichment Activities

AP for All
 Early College Program
 National Honor Society
 NAF Hospitality IT Academy
 6 World languages program
 International Travel Program
 Marching and Jazz Bands
 Summit Online Learning

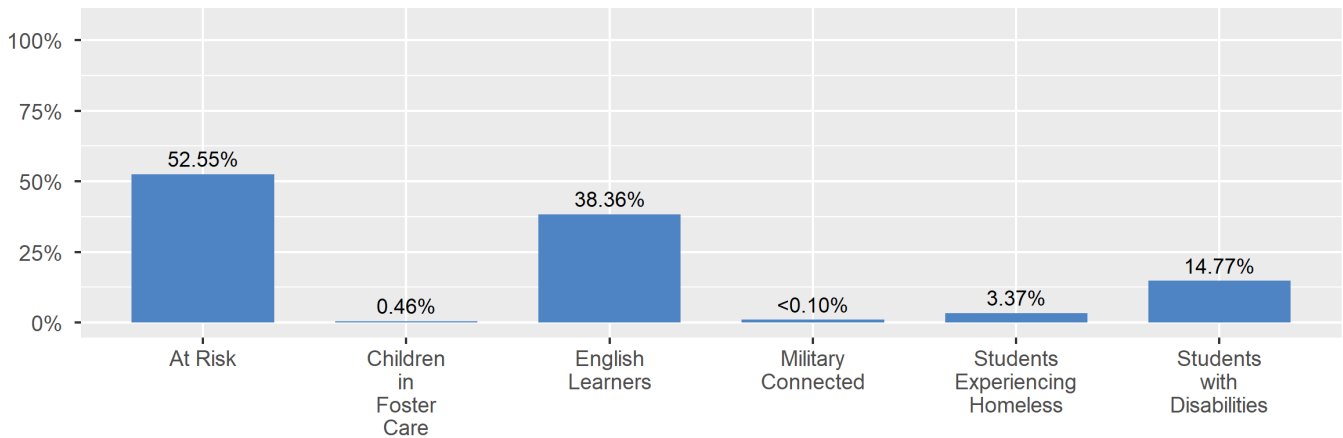
School Enrollment

The ever-enrolled count is the total number of students who are enrolled at any point during the school year; a student who attends a school for one day or 180 days is counted the same way. For this reason, the ever-enrolled count will always be larger than the audit count.

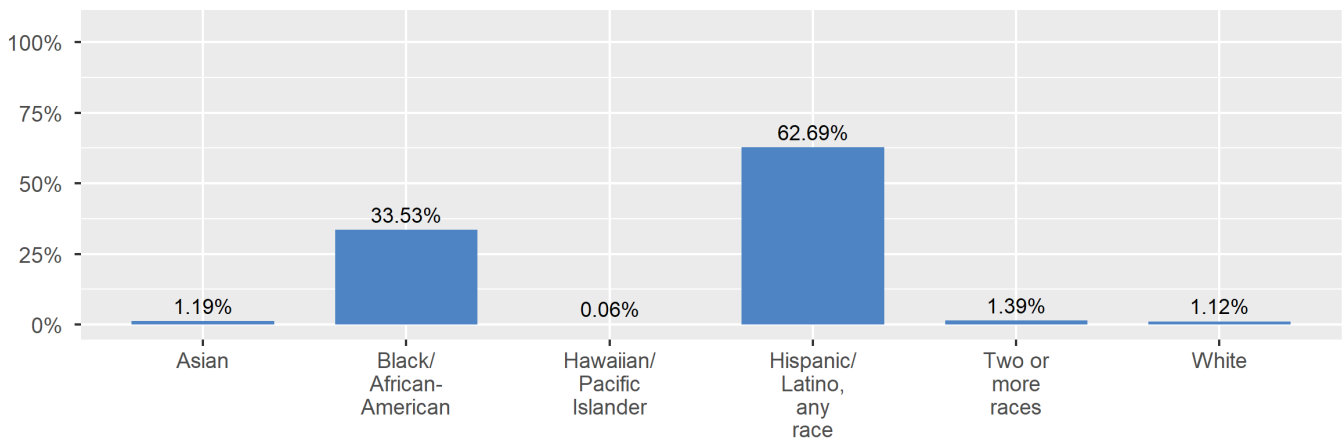
2020-21 Ever-Enrolled by Grade Level

Grade 06	Grade 07	Grade 08	Grade 09	Grade 10	Grade 11	Grade 12
152	197	185	318	242	216	199

Enrollment by Student Group



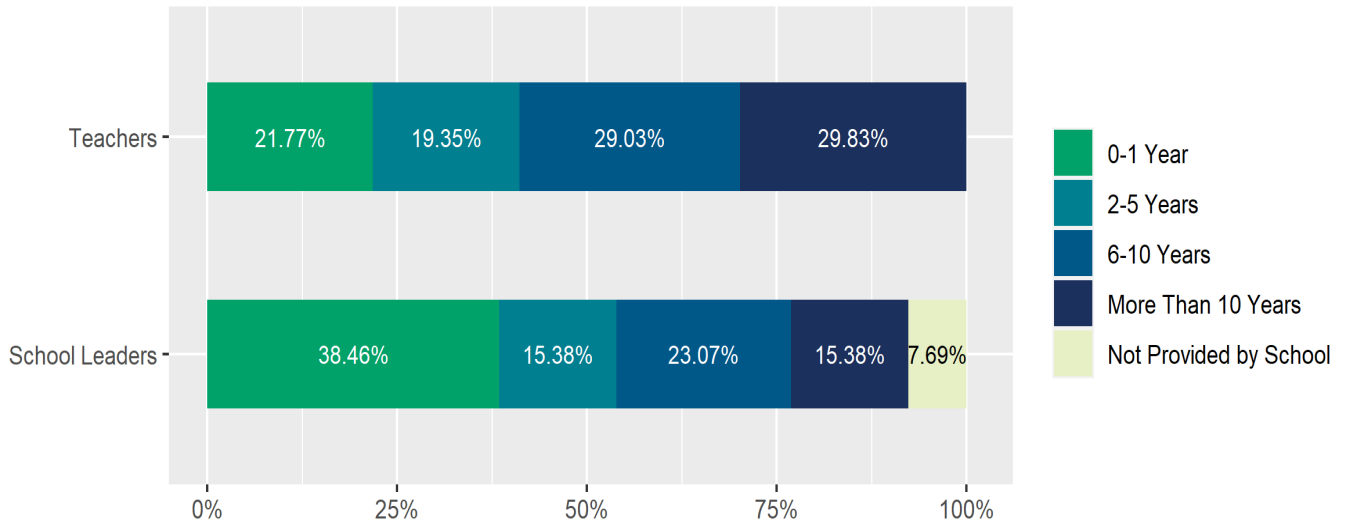
Enrollment by Race/Ethnicity



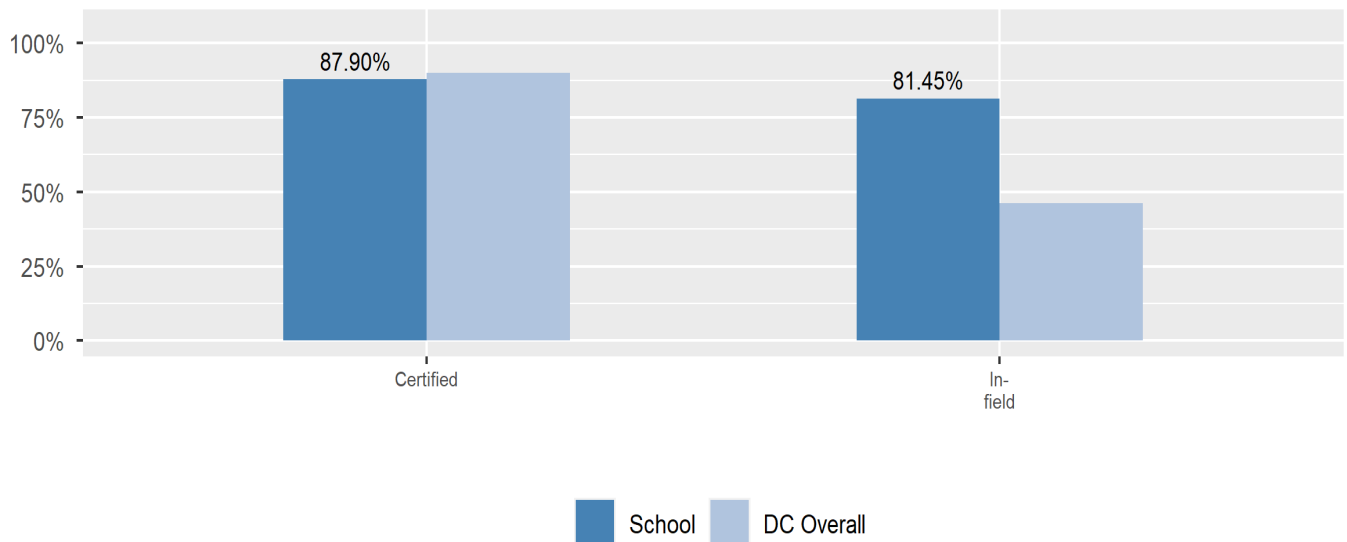
Teacher and School Leader Data

This page includes information about teacher experience levels in DC Public Schools and public charter schools. For DC Public Schools, it also includes information about credentialed and in-field teachers.

School Leader and Teacher - Years of Experience



Teacher Qualifications



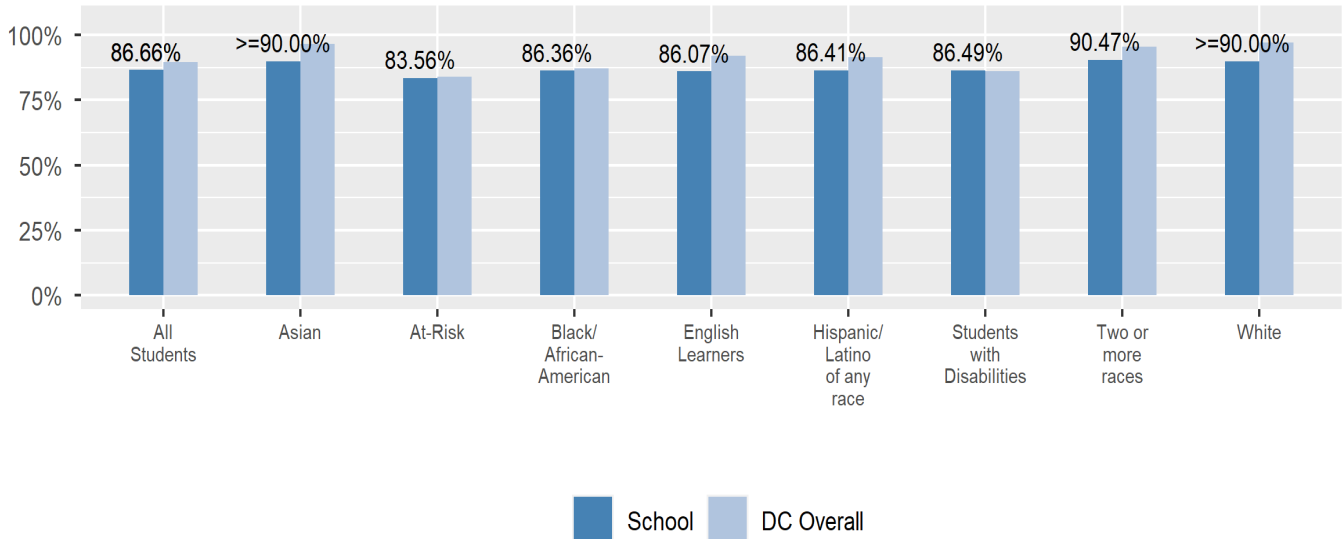
School Safety and Discipline

Information about discipline and school safety in DC, in accordance with the U.S. Department of Education's Civil Rights Data collection, including suspensions and expulsions for students, school related arrests, reported incidents of violence, bullying, and harassment are available in the OSSE Discipline report and data files (<https://osse.dc.gov/page/data-and-reports-0>).

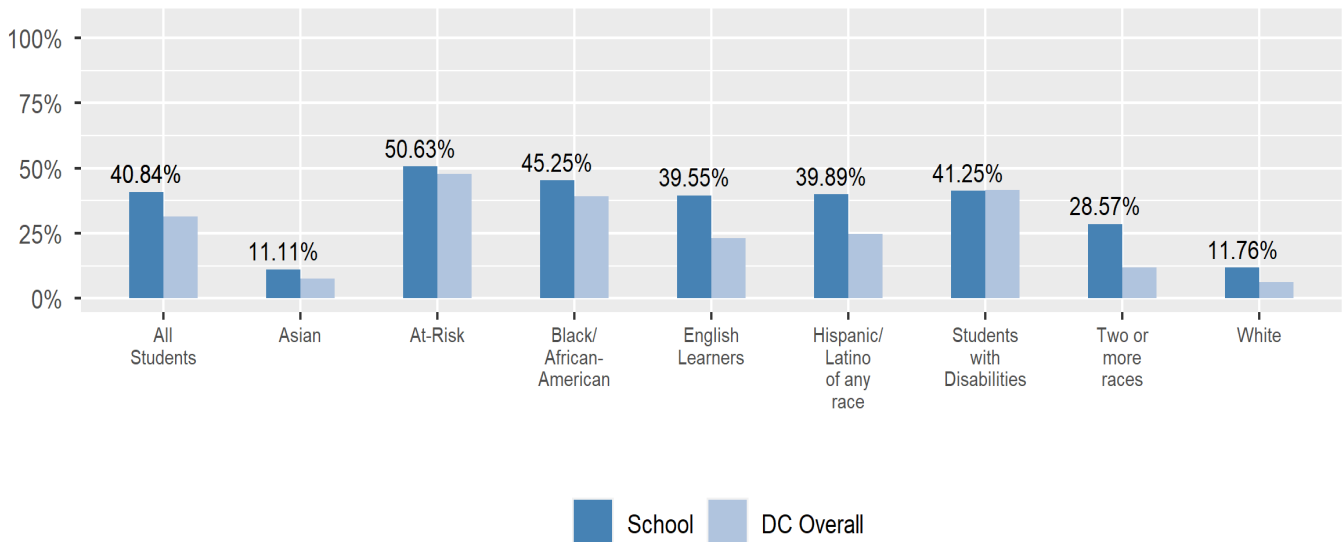
Attendance

Review information on attendance below, including in-seat attendance for all students (there is a separate measure of attendance for pre-K students, since pre-K is not compulsory), and the percentage of students chronically absent, meaning that they miss at least 10% of the school days for which they are enrolled throughout the school year at the school. Note: Due to variations in schools schedules, attendance data may have been collected differently by schools on synchronous and asynchronous learning days. As a result attendance data is unique to this school year and not necessarily comparable to prior years.

In-Seat Attendance



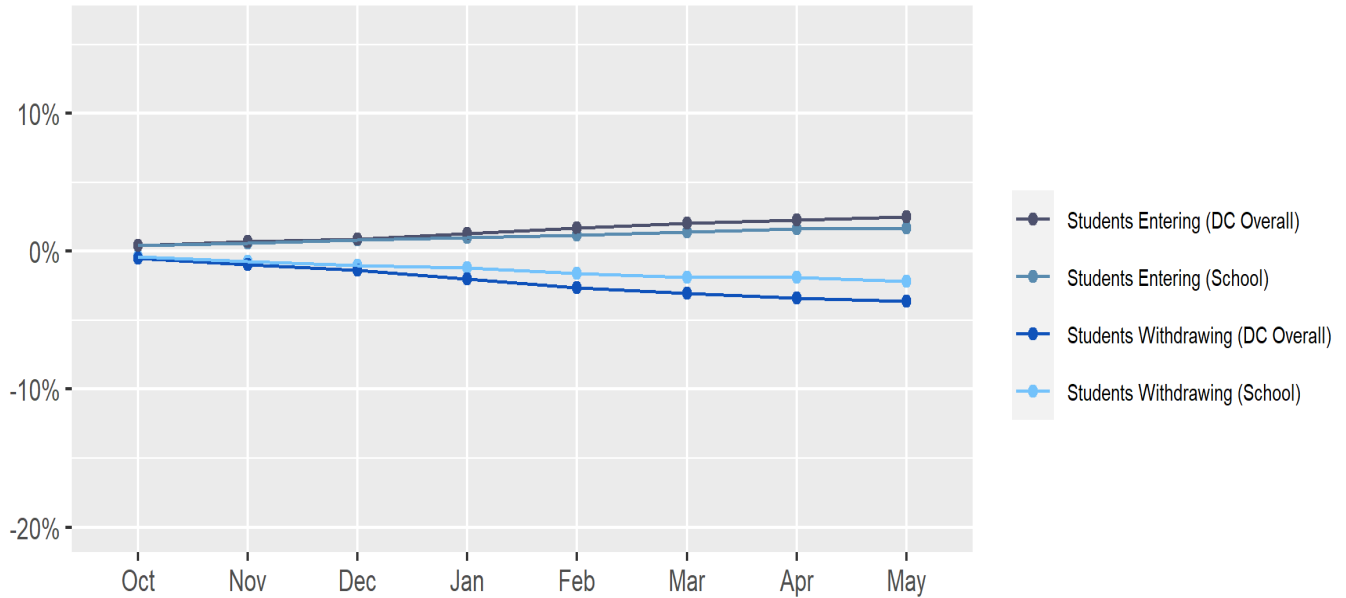
Chronic Absenteeism



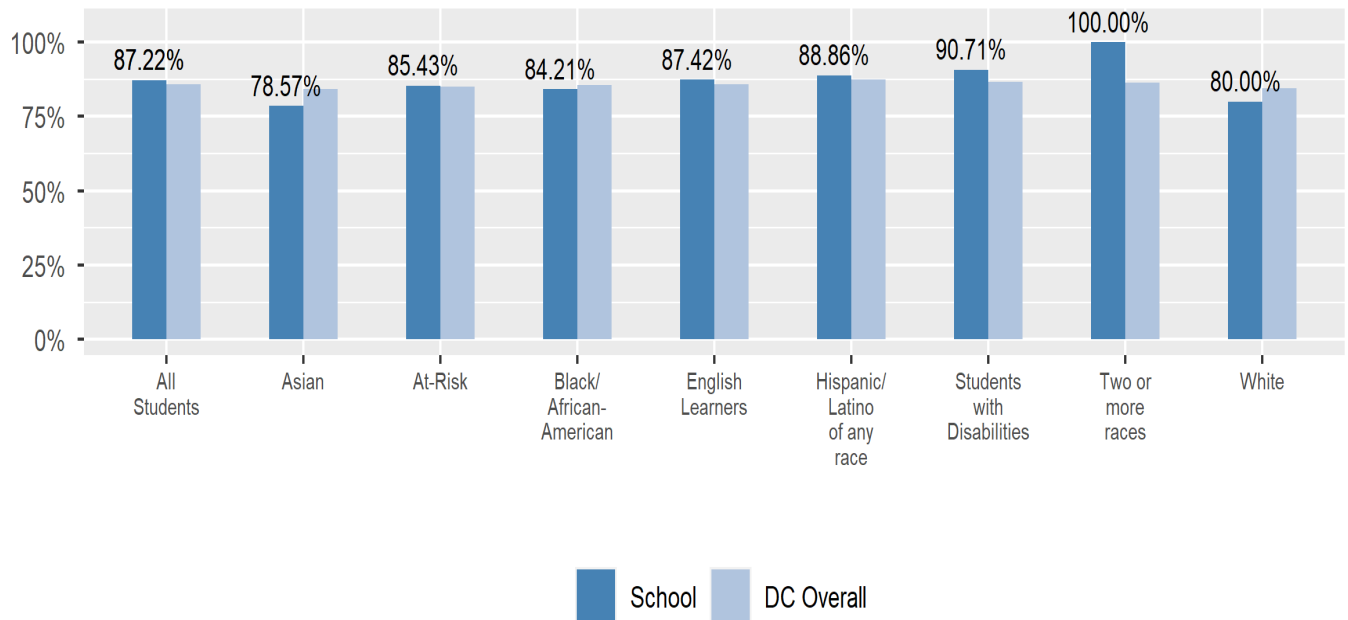
Student Enrollment Changes

Explore information on how much the population at the school changes throughout the year or from year to year. It shows information about changes in enrollment, including whether students leave or enter the school mid-year, and whether eligible students choose to re-enroll in the school.

Mobility



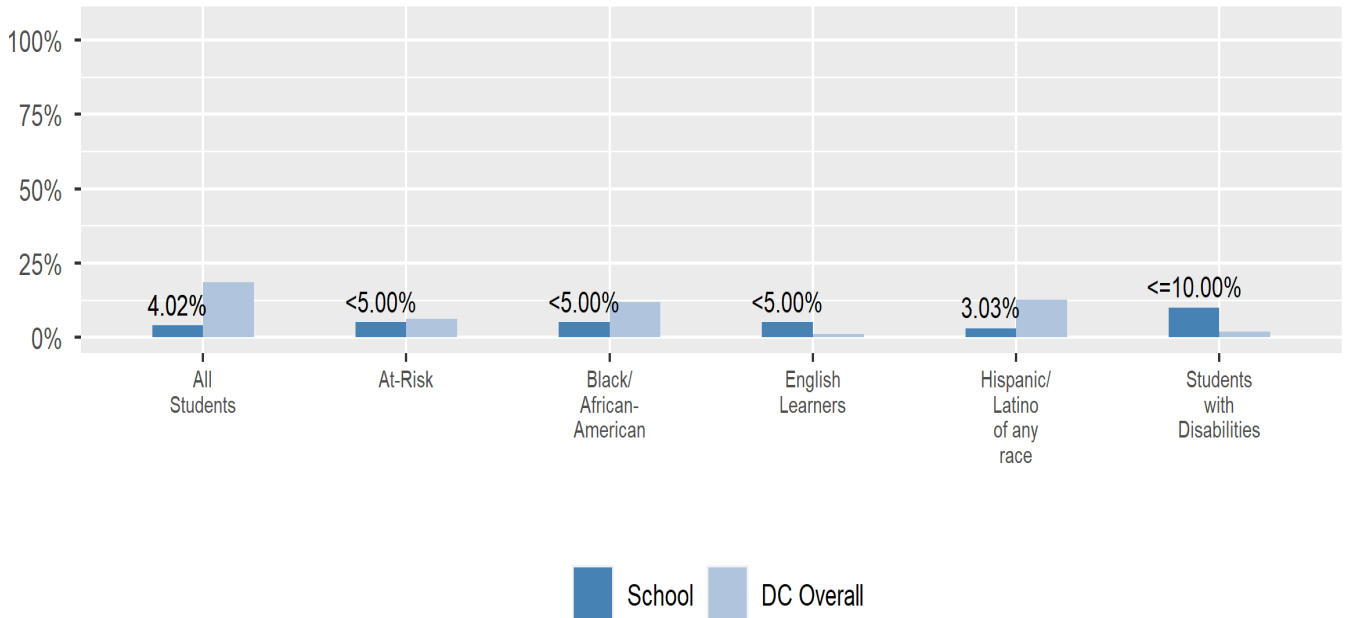
Re-Enrollment



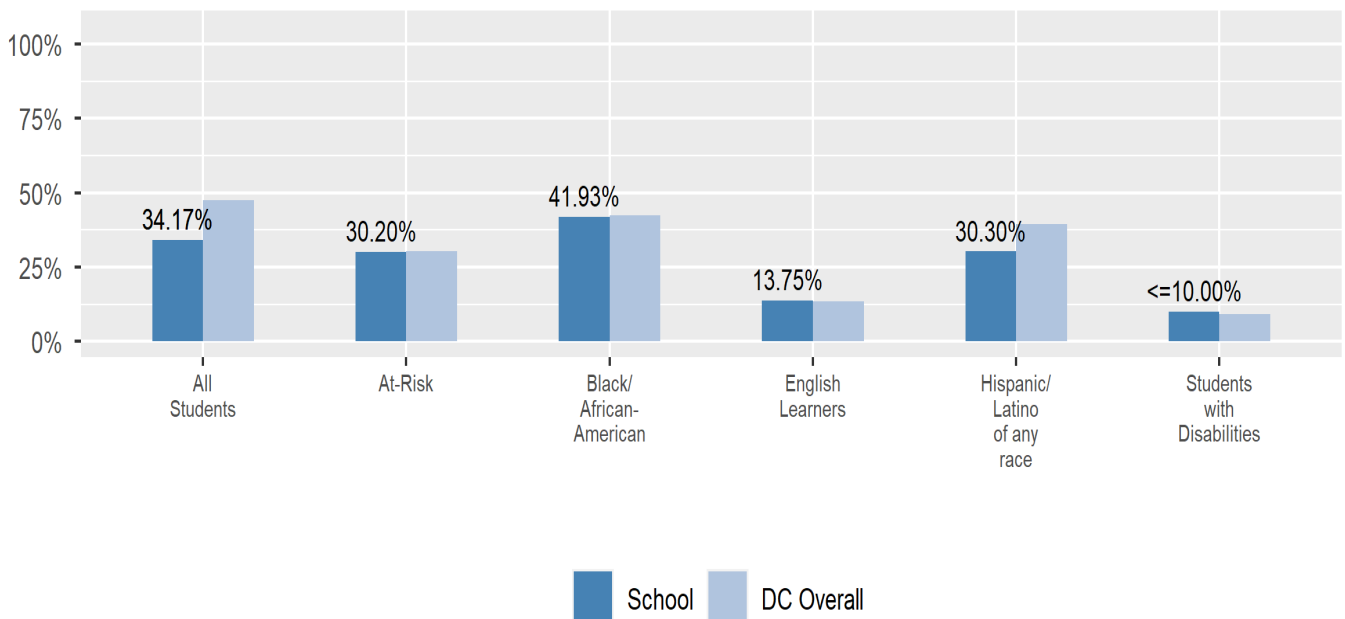
College and Career Readiness

This section shows whether students at this school are participating in college and career readiness opportunities, such as Advanced Placement (AP) or International Baccalaureate (IB) exams, and how they are performing on these and on the SAT.

SAT College and Career Ready Benchmark

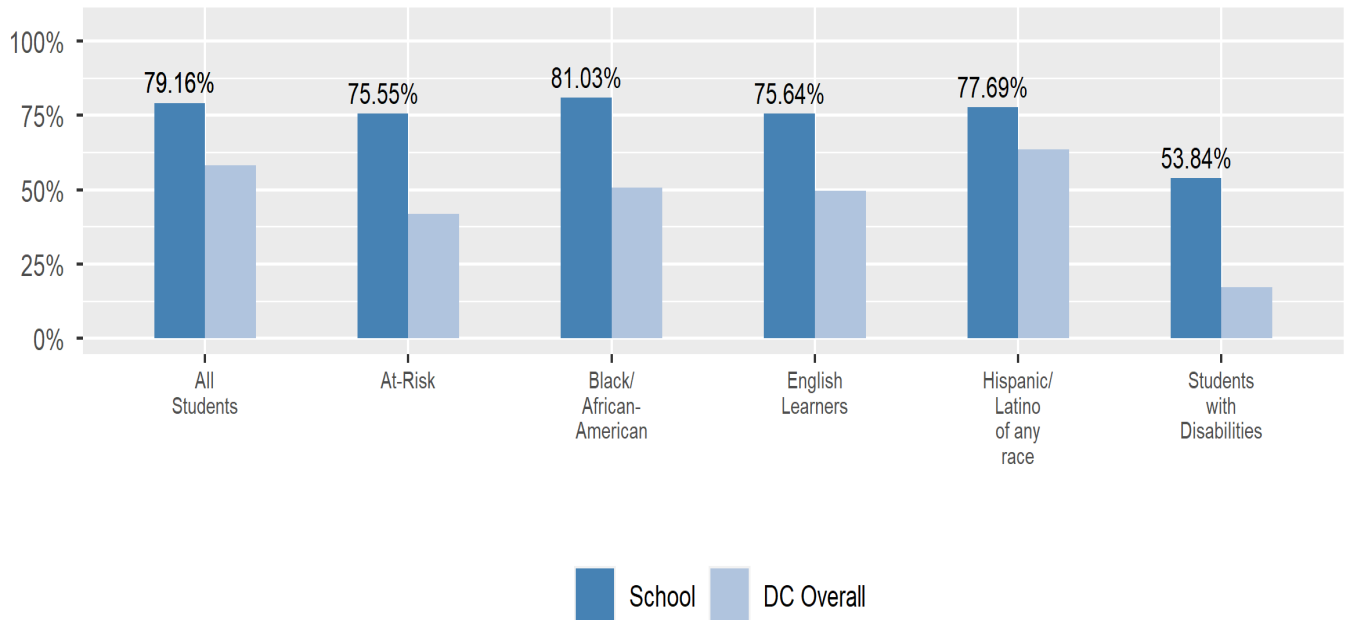


SAT DC Percentile

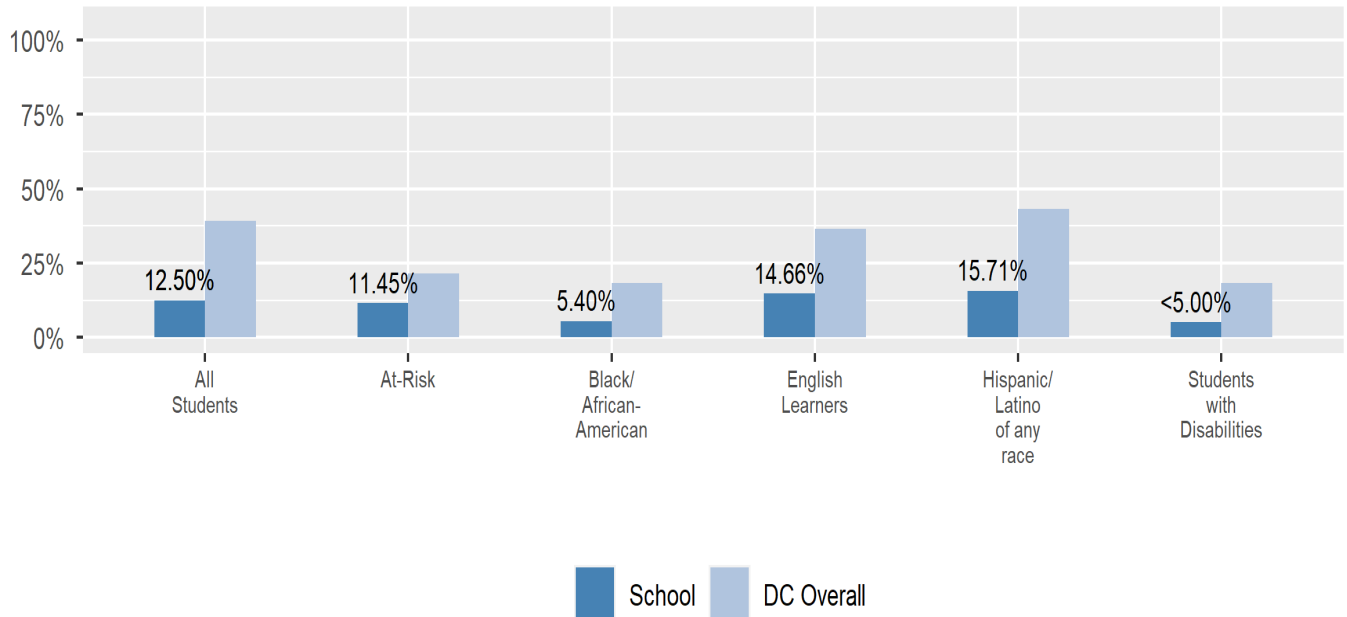


College and Career Readiness (cont.)

AP/IB Participation

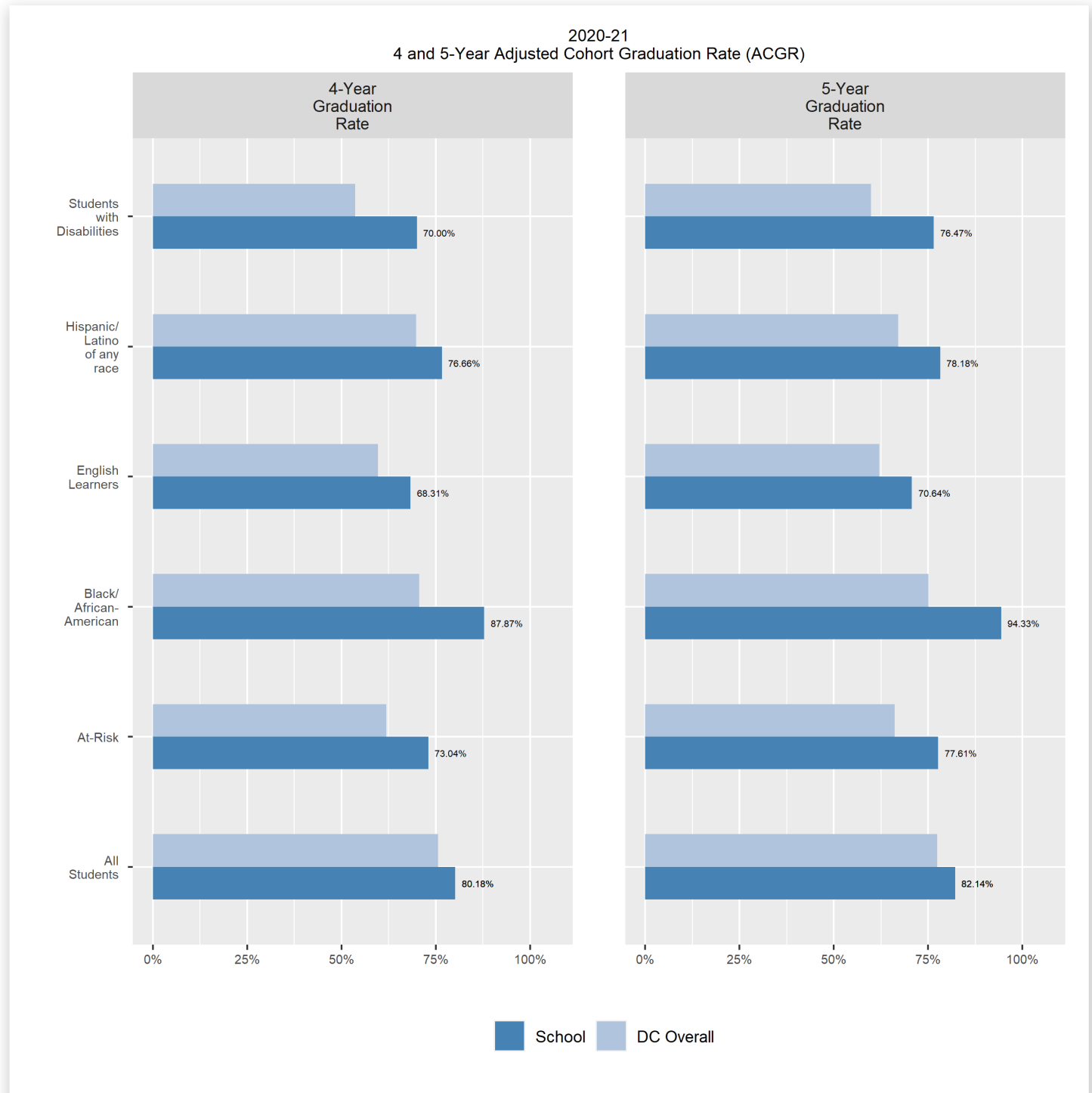


AP/IB Performance



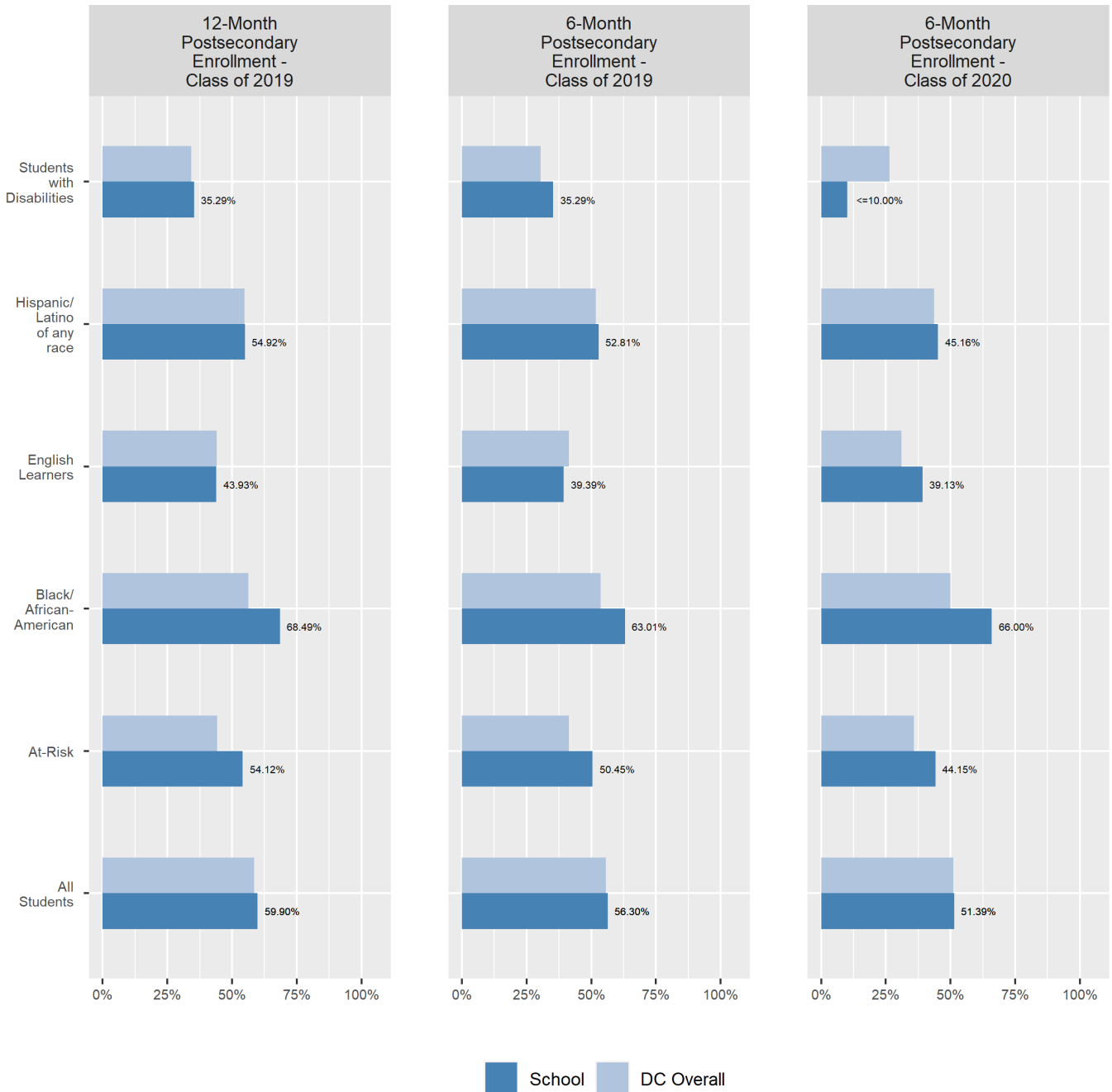
Graduation Rates

This page includes two high school graduation measures: The percentage of students in the school who graduate in 4 years and the percentage of students in the school who graduate in 5 years.



College Enrollment Rates

The percentage of high school graduates from the class of 2019 and 2020 who enrolled in a post-secondary degree-granting institution within 6 months and within 12 months following graduation.



Finance

Per-pupil expenditures represent the average amount of money spent on educating each student. In other words, this value represents the total amount of actual school expenditures divided by the number of students in the school.

2021 Per-pupil Expenditures

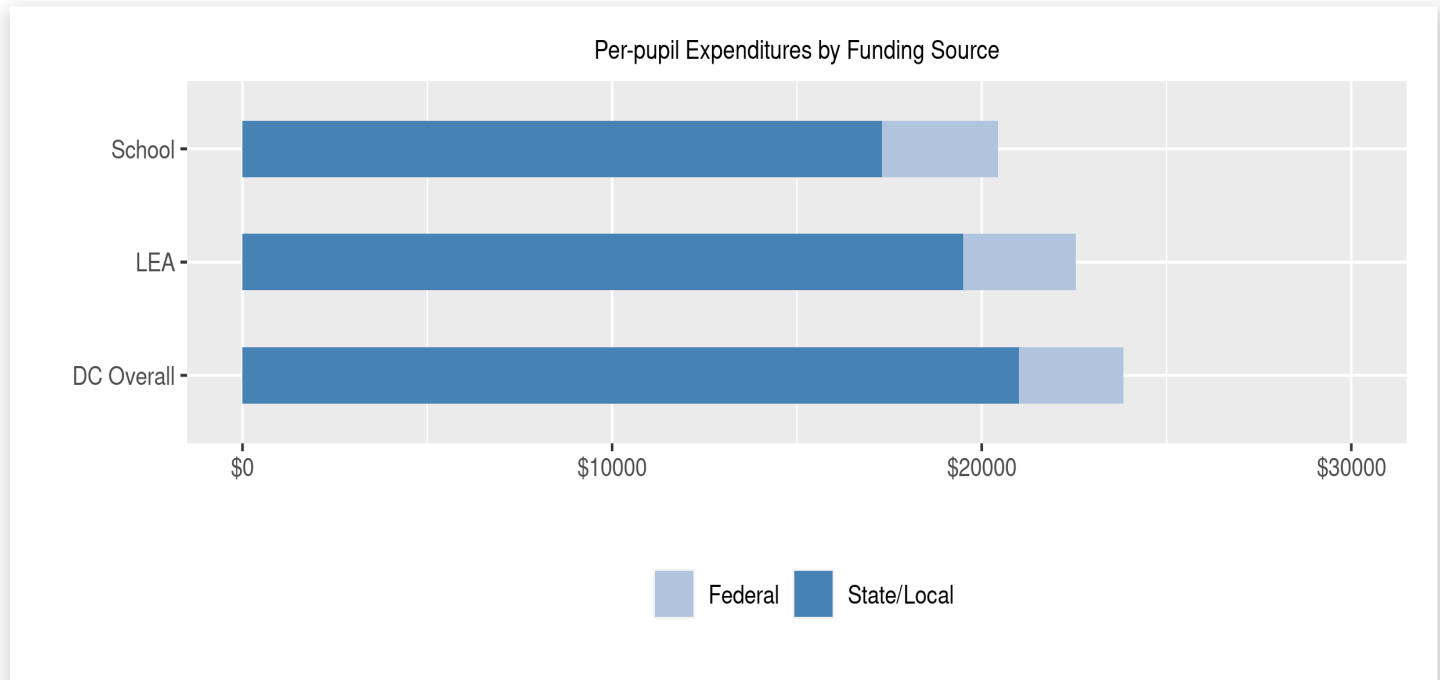
Per-pupil expenditure amount is calculated by dividing the total school expenditures by the October enrollment audit count of public school students.

Per-pupil: \$20,443

October Enrollment Audit Count: 1477

Per-pupil Expenditures by Funding Source

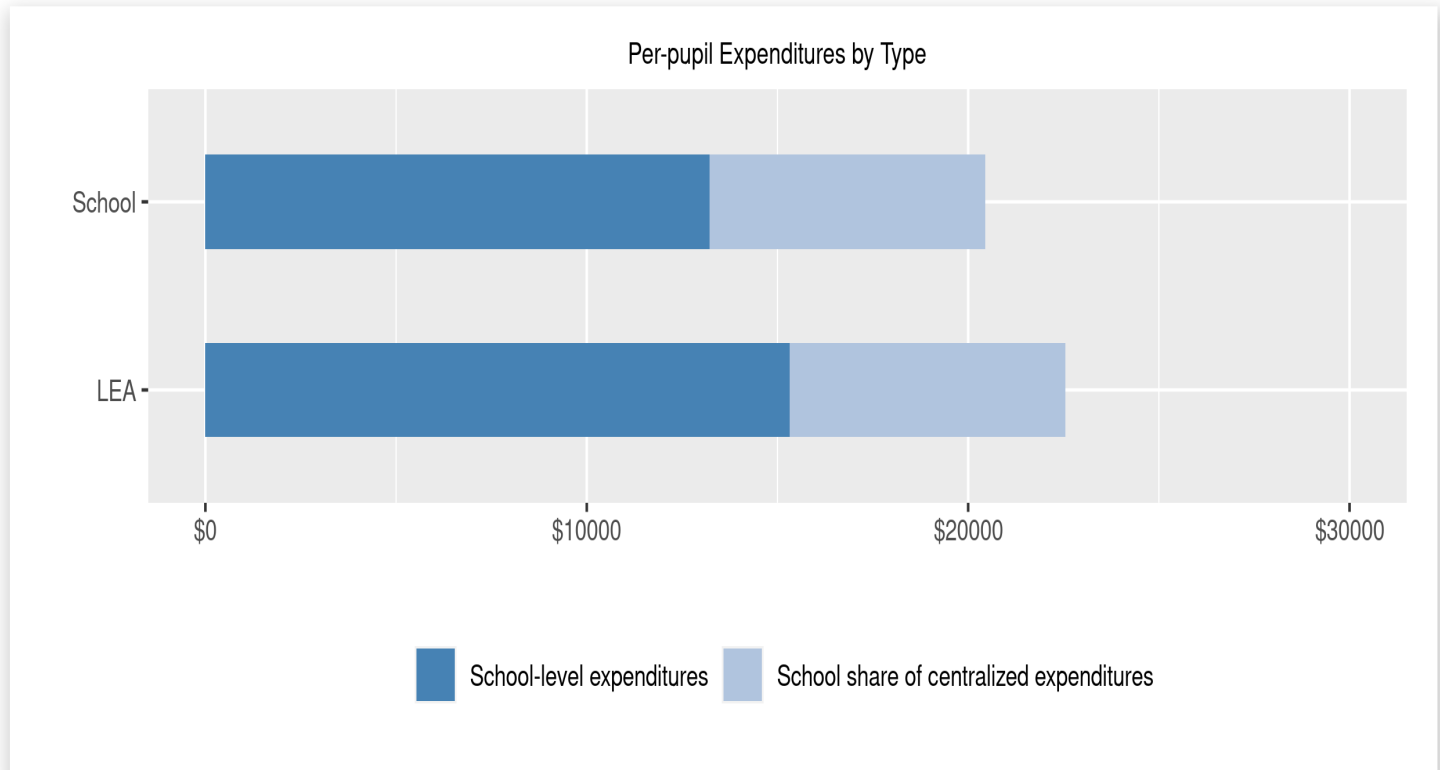
Details are provided about the funding sources for per-pupil expenditures. State/local sources represent revenue received directly from DC, including local grants and per-pupil funding. Federal sources include federal revenue, such as Title I funds and IDEA funding. Per-pupil expenditures are displayed compared to the LEA and DC average.



	State/Local	Federal	Total
School	\$17,303 84.64%	\$3,140 15.36%	\$20,443
LEA	\$19,494 86.44%	\$3,059 13.56%	\$22,553
DC Overall	\$21,002 88.14%	\$2,827 11.86%	\$23,828

Finance (cont.) - Per-pupil Expenditures by Type

Details are provided about the distribution of expenditures between school-level and centralized. School-level expenditures include spending on teacher and administrative salaries, books, supplies, and business costs. Centralized expenditures include the portion of spending at the LEA's central office that are allocated to the school. (Note: LEAs with only one school site do not report separate centralized expenditures)



	School-level expenditures	School share of centralized expenditures	Total
School	\$13,214 64.64%	\$7,229 35.36%	\$20,443
State/Local	\$12,279	\$5,024	
Federal	\$935	\$2,205	
LEA	\$15,324 67.95%	\$7,229 32.05%	\$22,553
State/Local	\$14,470	\$5,024	
Federal	\$854	\$2,205	