

Stuart-Hobson Middle School (Capitol Hill Cluster)

Message from the School

Stuart-Hobson offers a comprehensive and rigorous academic program for all students. Our curriculum includes accelerated courses including Honors English and accelerated math courses, and the chance to earn high school credit. All students create projects for History Day and Science Fair. We offer popular arts, music, and robotics courses. Our optional extended day program with After-School All-Stars offers more clubs. Our cheerleaders are champions and the Theatre program is renowned for its musicals.



📍 410 E St. NE, Washington, DC 20002

🏠 Ward 6

📞 (202) 671-6010

School Instructional Hours

Monday: 09:00AM - 03:30PM

Tuesday: 09:00AM - 03:30PM

Wednesday: 09:00AM - 03:30PM

Thursday: 09:00AM - 03:30PM

Friday: 09:00AM - 03:30PM

Total Students (2020-21 Ever-Enrolled): 524

Total Teachers: 37

Total School Leaders: 5

Grades Served: 6, 7, 8

Principal: Eric Fraser

Title-I Status: Yes

Local Education Agency (LEA): District of Columbia Public Schools

School Uniforms Required: Yes

Bus Line(s): 90, 92, 96, D6, D8, X2, X8, X9, DC Circulator

Metro Line(s): Red Line: Union Station

Before Care Offered: No

After Care Offered: Yes

- **Cost:** Free

School Program Information

Extended day
Interscholastic Sports
Restorative Justice Program

Parent Organization

Parent Organization Offered: Yes

Parent Organization Contact: Lona Valmore
(president@chcspta.org)

Parent Organization Website:
www.capitolhillclusterschool.org/

Extracurricular & Enrichment Activities

DCIAA Athletics
After School All-Stars
Clubs Robotics and Debate
Theater
Band
Arts
And Chorus
Space Camp

Stuart-Hobson Middle School (Capitol Hill Cluster)

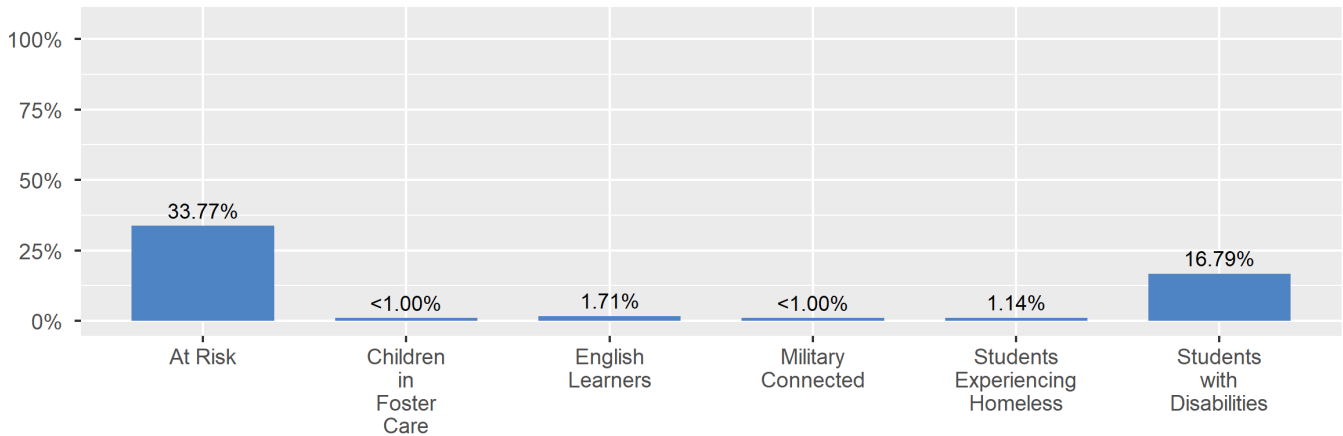
School Enrollment

The ever-enrolled count is the total number of students who are enrolled at any point during the school year; a student who attends a school for one day or 180 days is counted the same way. For this reason, the ever-enrolled count will always be larger than the audit count.

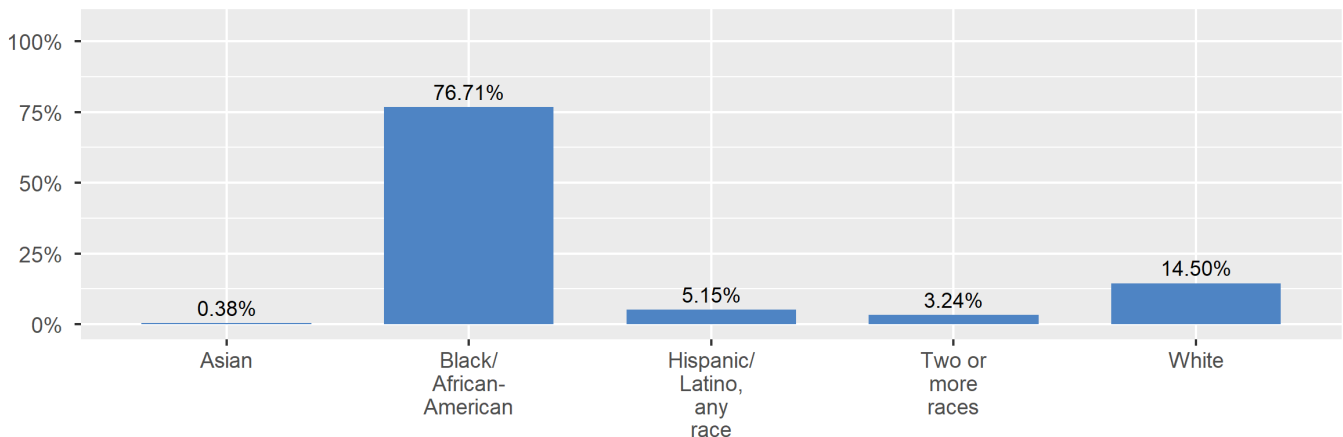
2020-21 Ever-Enrolled by Grade Level

Grade 06	Grade 07	Grade 08
178	179	167

Enrollment by Student Group



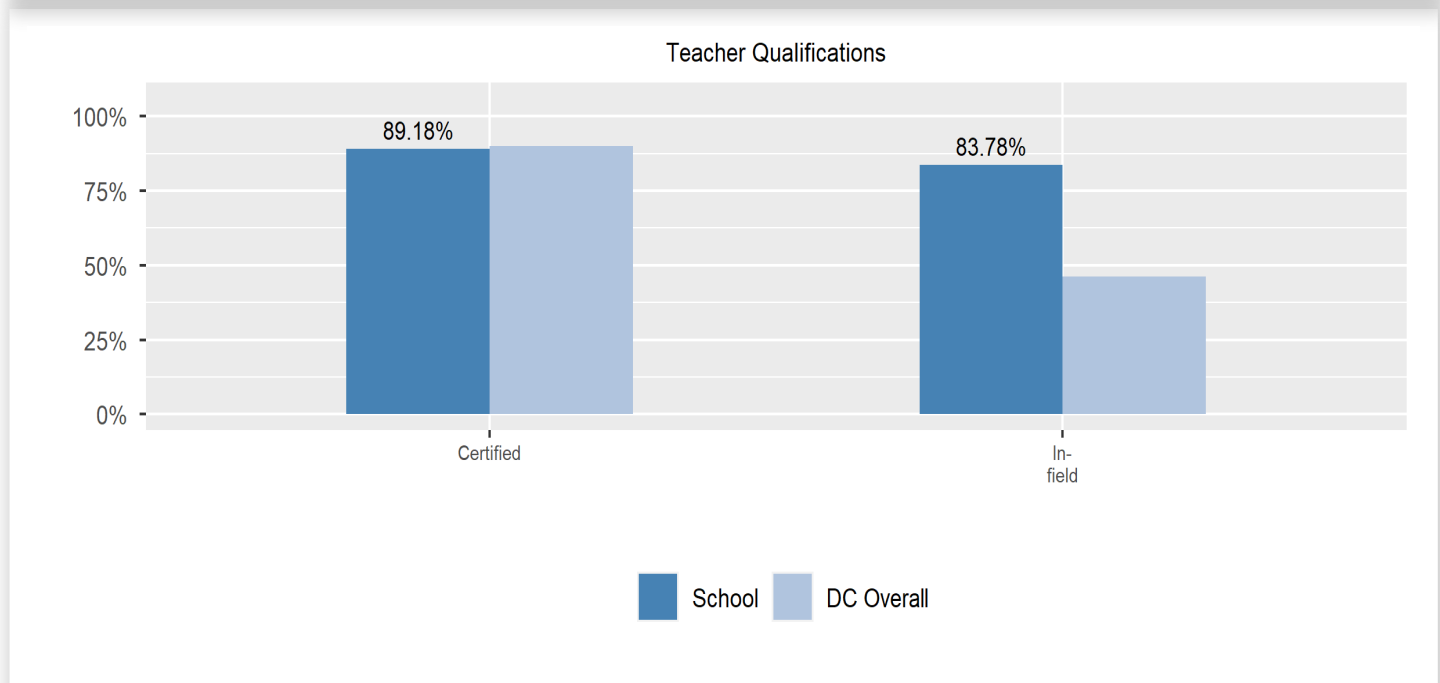
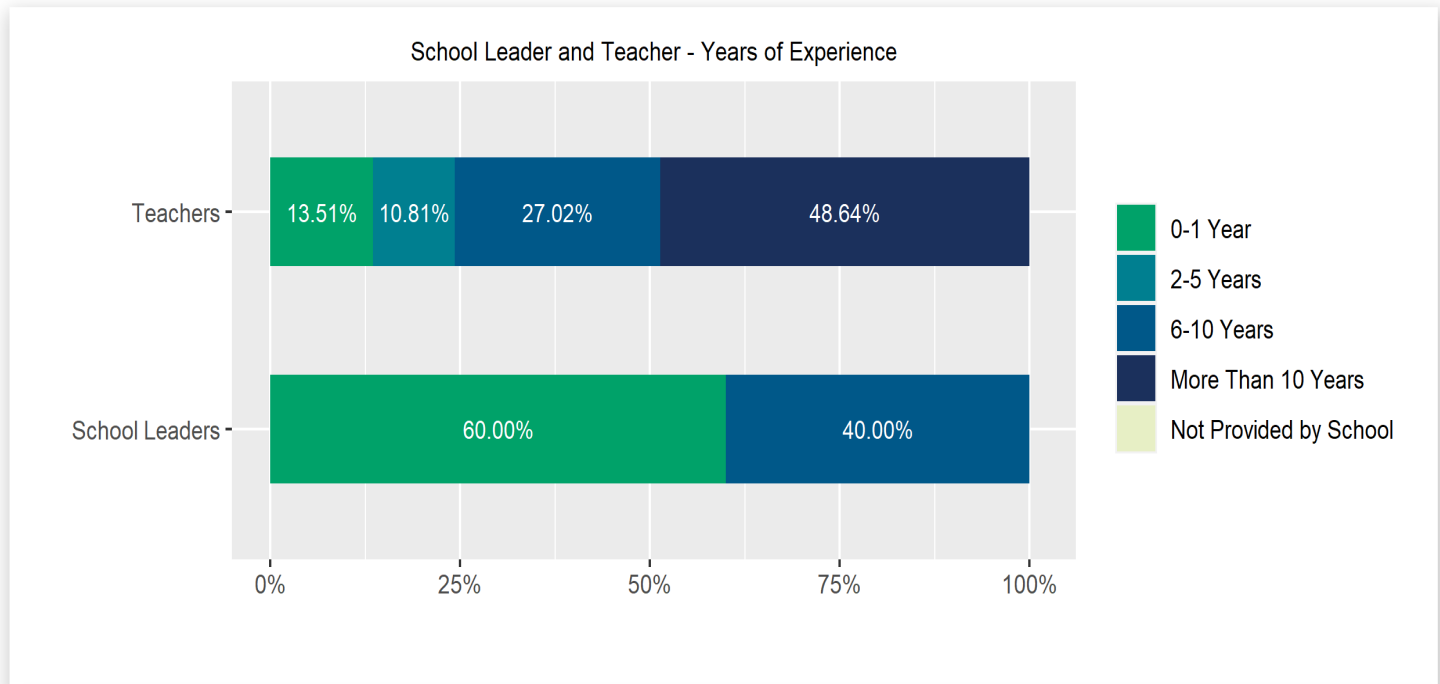
Enrollment by Race/Ethnicity



Stuart-Hobson Middle School (Capitol Hill Cluster)

Teacher and School Leader Data

This page includes information about teacher experience levels in DC Public Schools and public charter schools. For DC Public Schools, it also includes information about credentialed and in-field teachers.



School Safety and Discipline

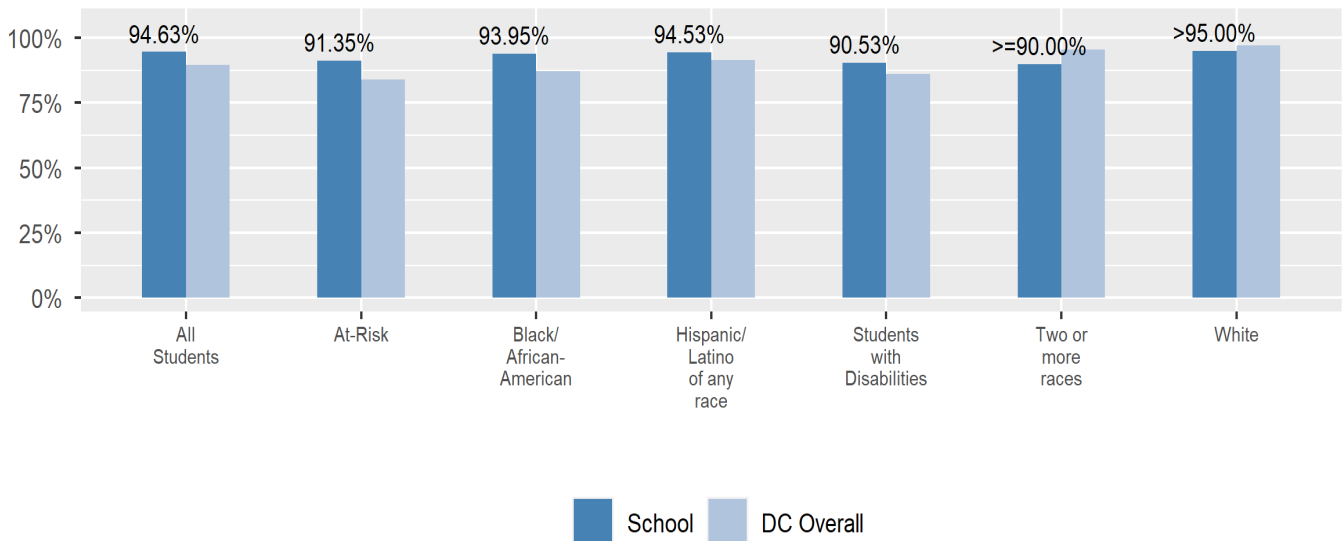
Information about discipline and school safety in DC, in accordance with the U.S. Department of Education's Civil Rights Data collection, including suspensions and expulsions for students, school related arrests, reported incidents of violence, bullying, and harassment are available in the OSSE Discipline report and data files (<https://osse.dc.gov/page/data-and-reports-0>).

Stuart-Hobson Middle School (Capitol Hill Cluster)

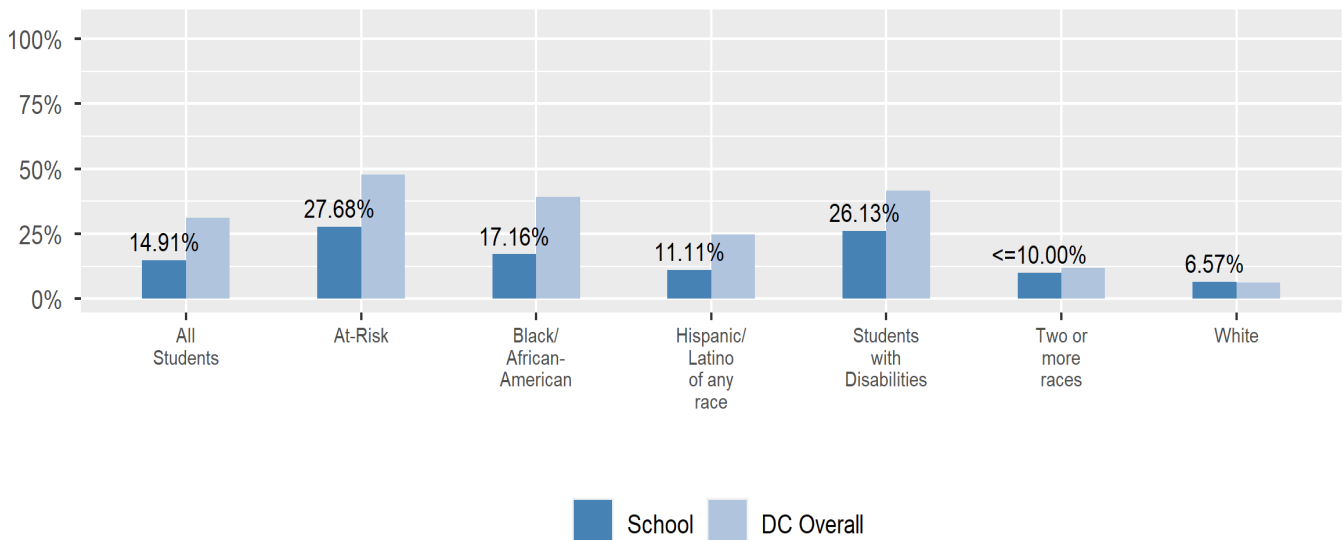
Attendance

Review information on attendance below, including in-seat attendance for all students (there is a separate measure of attendance for pre-K students, since pre-K is not compulsory), and the percentage of students chronically absent, meaning that they miss at least 10% of the school days for which they are enrolled throughout the school year at the school. Note: Due to variations in schools schedules, attendance data may have been collected differently by schools on synchronous and asynchronous learning days. As a result attendance data is unique to this school year and not necessarily comparable to prior years.

In-Seat Attendance



Chronic Absenteeism

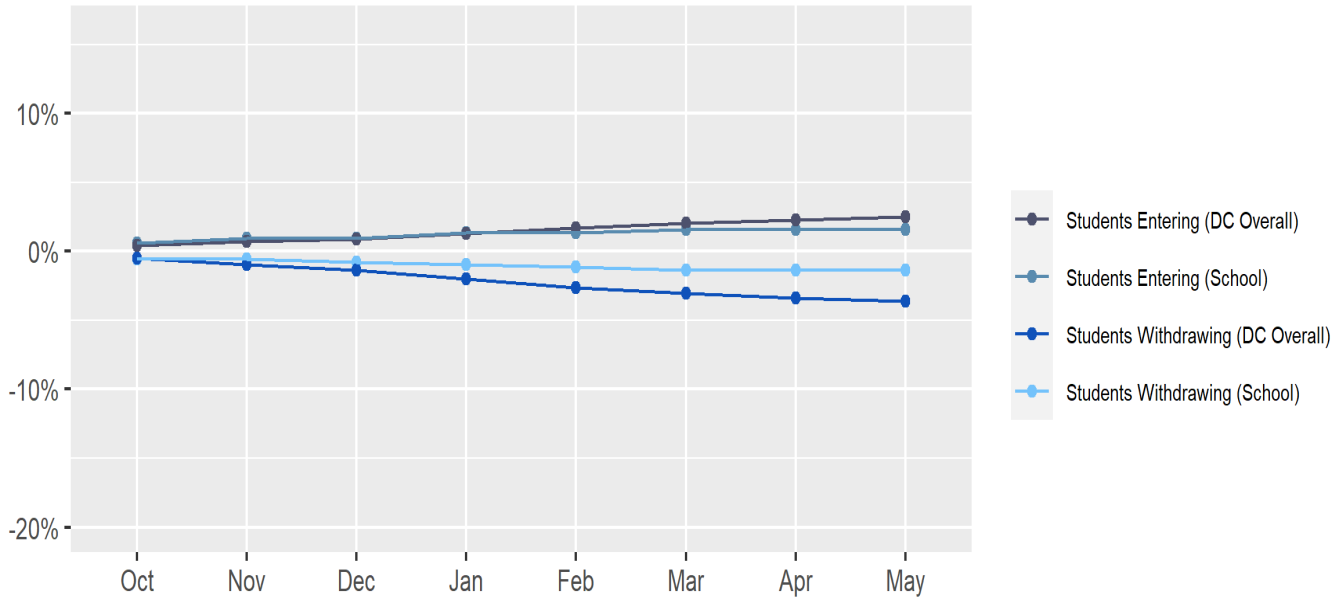


Stuart-Hobson Middle School (Capitol Hill Cluster)

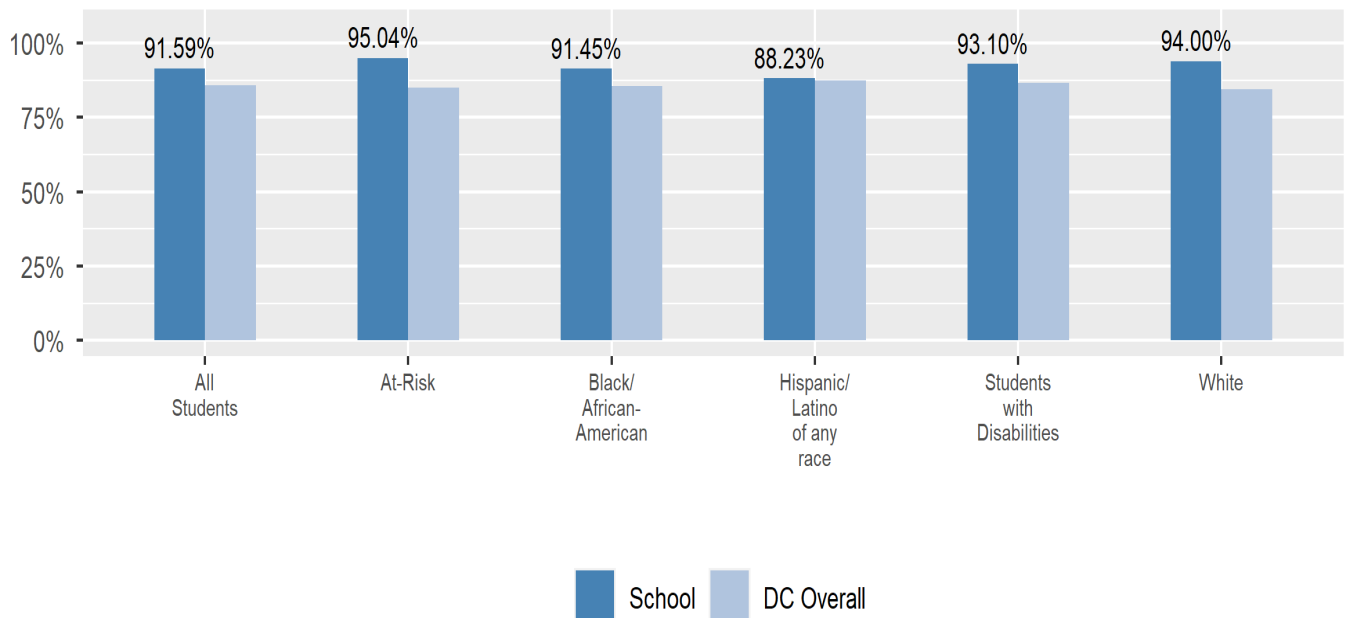
Student Enrollment Changes

Explore information on how much the population at the school changes throughout the year or from year to year. It shows information about changes in enrollment, including whether students leave or enter the school mid-year, and whether eligible students choose to re-enroll in the school.

Mobility



Re-Enrollment



Stuart-Hobson Middle School (Capitol Hill Cluster)

Finance

Per-pupil expenditures represent the average amount of money spent on educating each student. In other words, this value represents the total amount of actual school expenditures divided by the number of students in the school.

2021 Per-pupil Expenditures

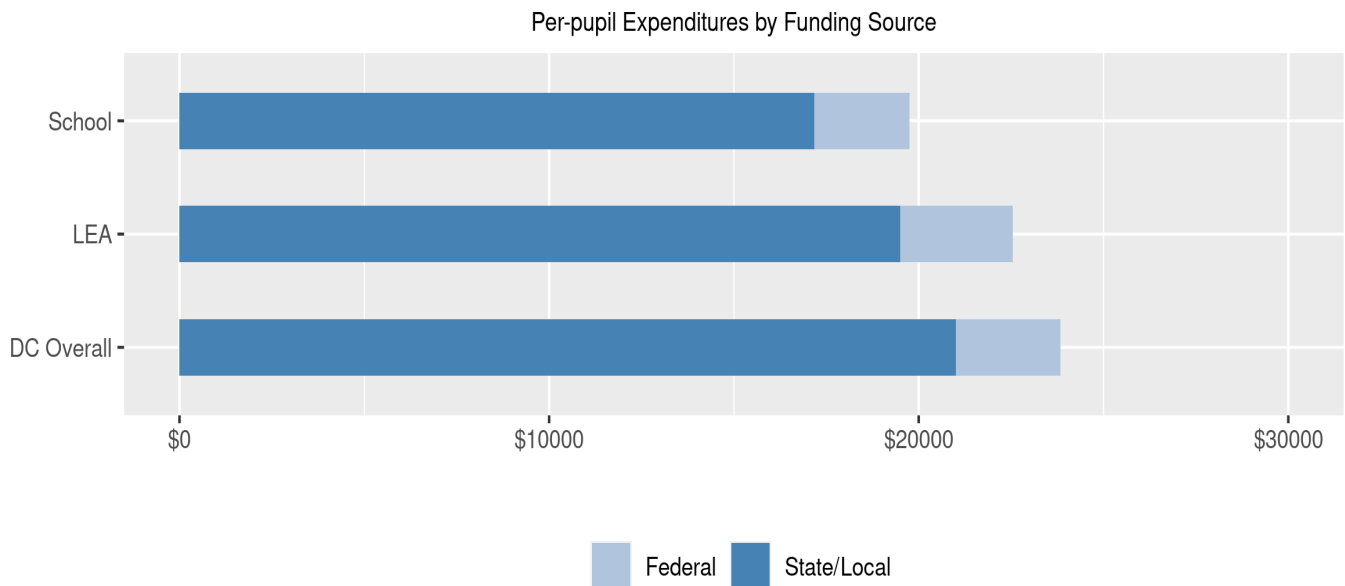
Per-pupil expenditure amount is calculated by dividing the total school expenditures by the October enrollment audit count of public school students.

Per-pupil: \$19,752

October Enrollment Audit Count: 513

Per-pupil Expenditures by Funding Source

Details are provided about the funding sources for per-pupil expenditures. State/local sources represent revenue received directly from DC, including local grants and per-pupil funding. Federal sources include federal revenue, such as Title I funds and IDEA funding. Per-pupil expenditures are displayed compared to the LEA and DC average.

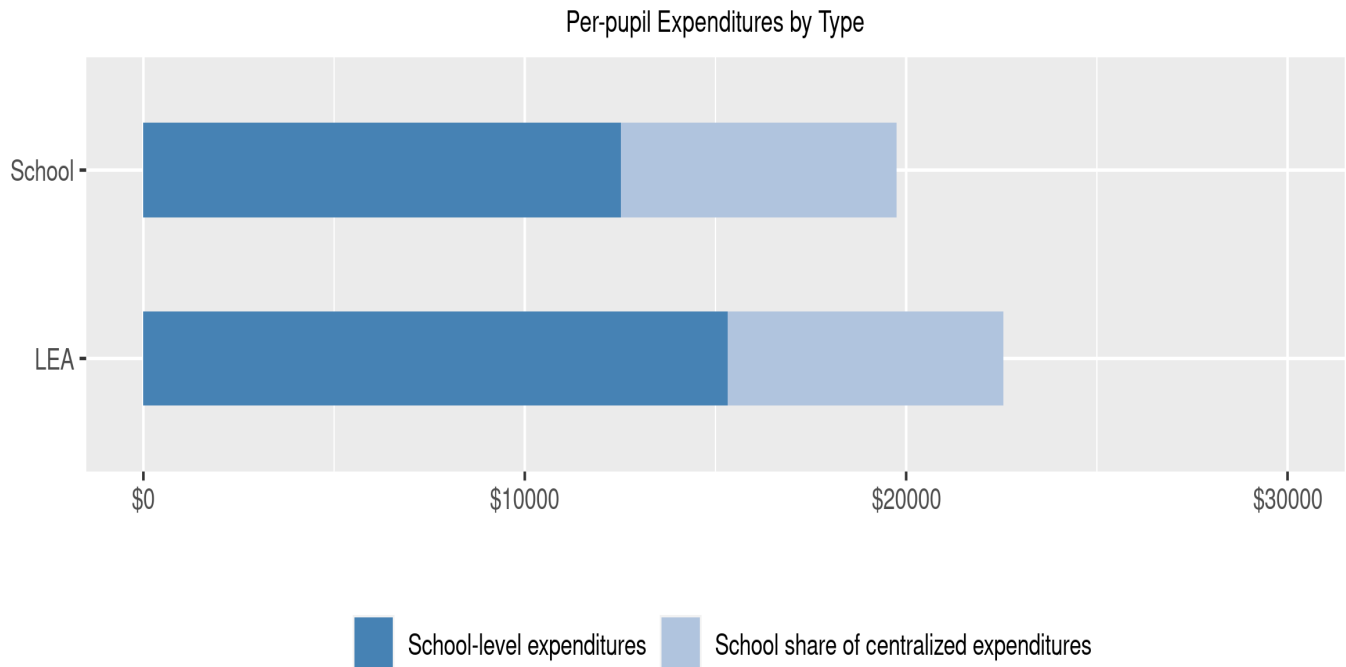


	State/Local	Federal	Total
School	\$17,170 86.93%	\$2,582 13.07%	\$19,752
LEA	\$19,494 86.44%	\$3,059 13.56%	\$22,553
DC Overall	\$21,002 88.14%	\$2,827 11.86%	\$23,828

Stuart-Hobson Middle School (Capitol Hill Cluster)

Finance (cont.) - Per-pupil Expenditures by Type

Details are provided about the distribution of expenditures between school-level and centralized. School-level expenditures include spending on teacher and administrative salaries, books, supplies, and business costs. Centralized expenditures include the portion of spending at the LEA's central office that are allocated to the school. (Note: LEAs with only one school site do not report separate centralized expenditures)



	School-level expenditures	School share of centralized expenditures	Total
School	\$12,523 63.4%	\$7,229 36.6%	\$19,752
State/Local	\$12,147	\$5,024	
Federal	\$377	\$2,205	
LEA	\$15,324 67.95%	\$7,229 32.05%	\$22,553
State/Local	\$14,470	\$5,024	
Federal	\$854	\$2,205	