

Message from the School

At Sousa Middle School, excellence is the standard! Our goal is to help our students become change agents in their communities and the world at large. We set high expectations for our students and push students to become productive citizens, and leaders in the quest for social justice. Through critical thinking, creativity, arts integration in all core classes, and utilization of technology, Sousa Scholars connect to themselves, each other, all cultures, and the beauty of the world.



3650 Ely Pl. SE, Washington, DC 20019

Ward 7

(202) 729-3260

School Instructional Hours

Monday: 08:45 AM - 03:15 PM
Tuesday: 08:45 AM - 03:15 PM
Wednesday: 08:45 AM - 03:15 PM
Thursday: 08:45 AM - 03:15 PM
Friday: 08:45 AM - 03:15 PM

Total Students (2021-22 Ever-Enrolled): 275

Total Teachers: 27

Total School Leaders: 5

Grades Served: 6, 7, 8

Principal: Brittany Green - Pascal

Title-I Status: Yes

Local Education Agency (LEA): District of Columbia Public Schools

School Uniforms Required: Yes

Bus Line(s): A31, S35, U5, U6, V2, V4

Metro Line(s): Not Provided

Before Care Offered: No

After Care Offered: No

School Program Information

Arts Integration
 Blended Learning
 Online learning
 STEM Focus
 Restorative Justice Program

Parent Organization

Parent Organization Offered: No

Extracurricular & Enrichment Activities

Project Based Learning Electives
 SocioEmotional Developmental Clubs
 10 Diverse Competitive Athletic Teams
 Attendance Awareness Clubs

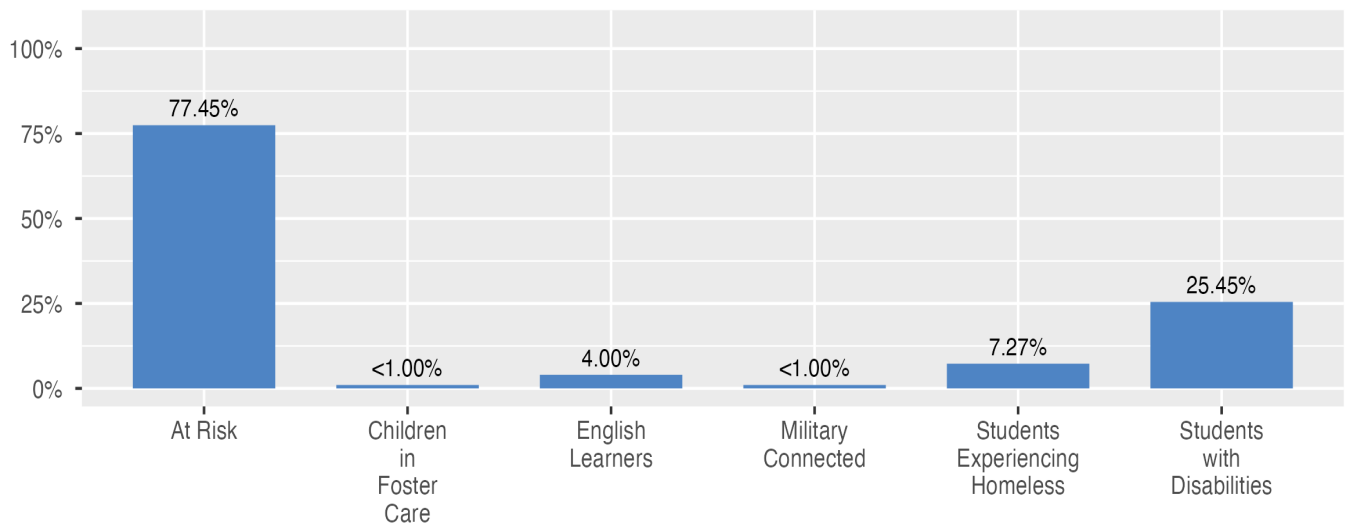
School Enrollment

The ever-enrolled count is the total number of students who are enrolled at any point during the school year; a student who attends a school for one day or 180 days is counted the same way. For this reason, the ever-enrolled count will always be larger than the audit count.

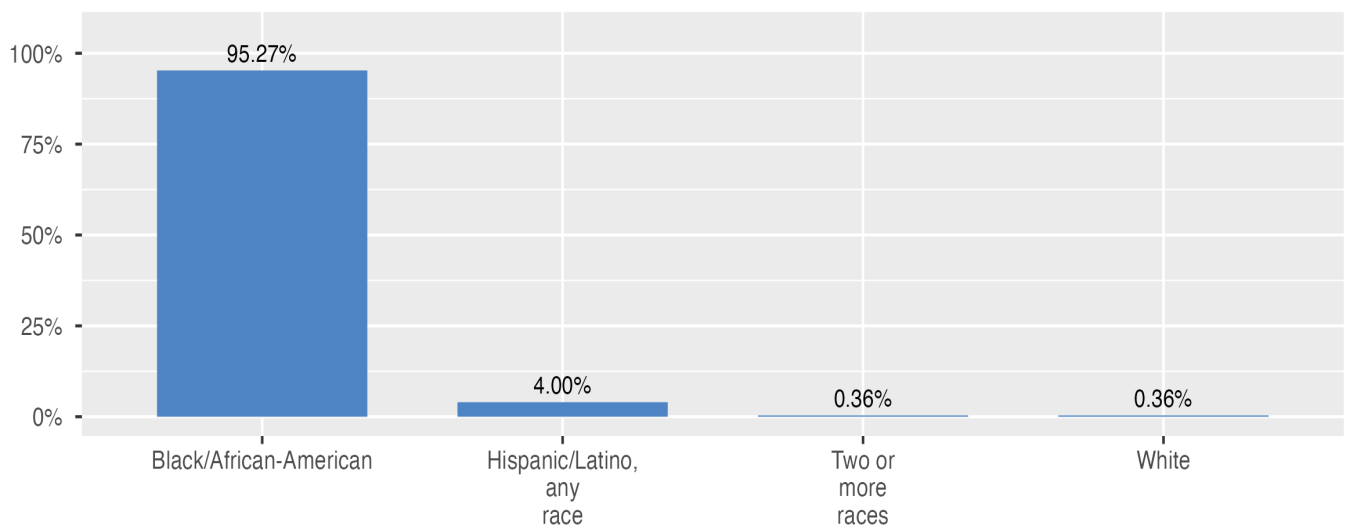
2021-22 Ever-Enrolled by Grade Level

Grade 06	Grade 07	Grade 08
99	78	98

Enrollment by Student Group

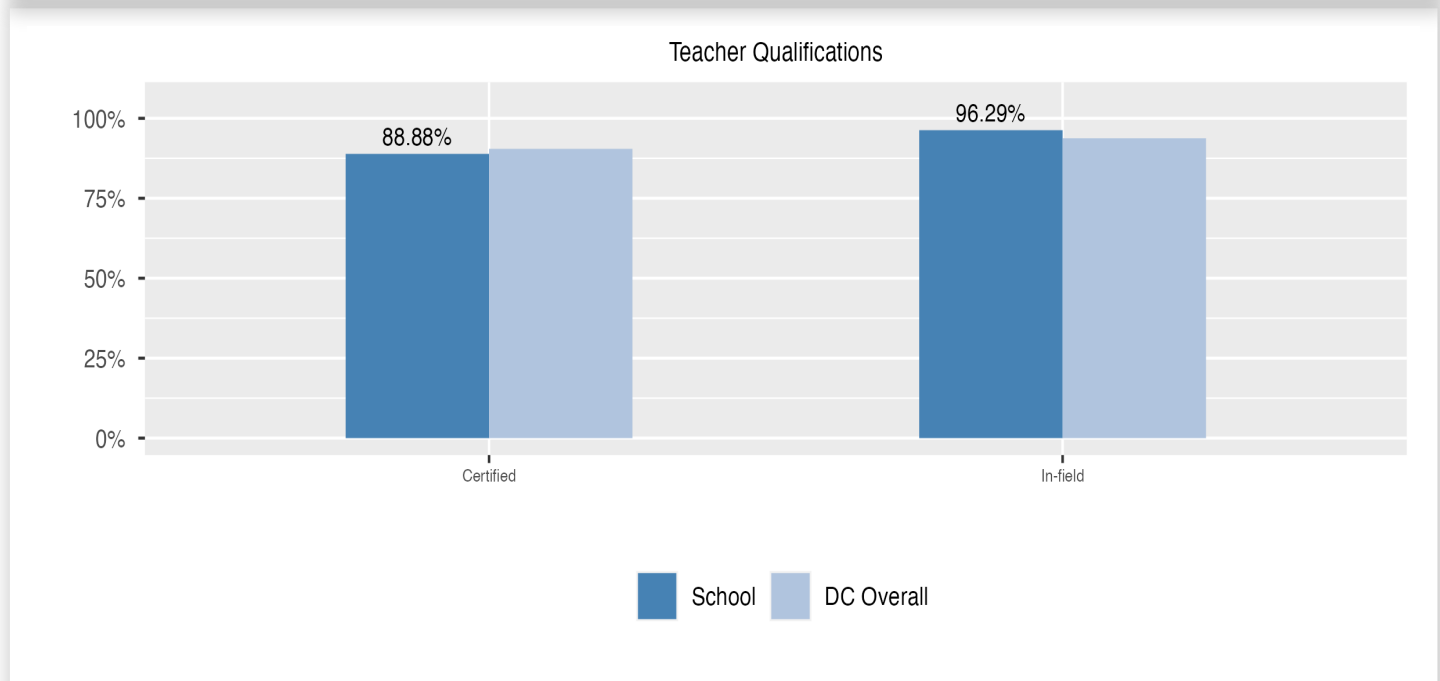
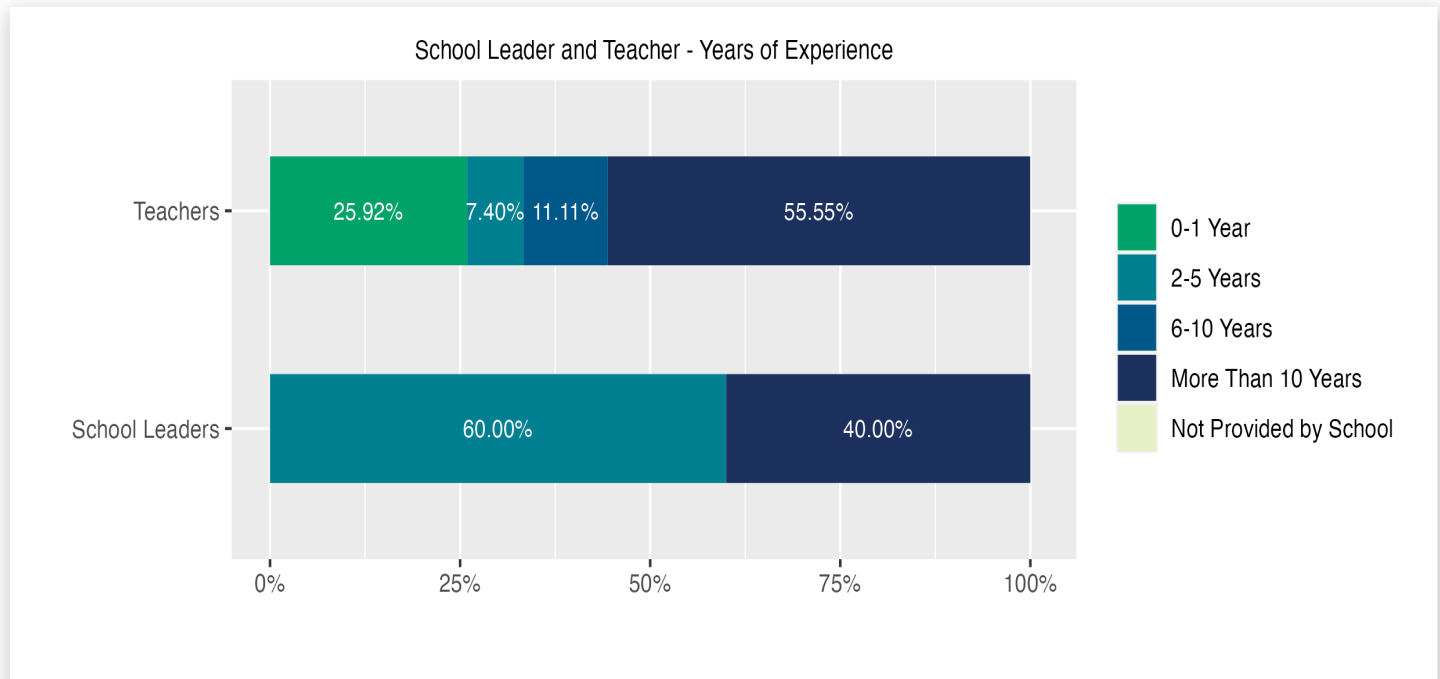


Enrollment by Race/Ethnicity



Teacher and School Leader Data

This page includes information about teacher experience levels in DC Public Schools and public charter schools. For DC Public Schools, it also includes information about credentialed and in-field teachers.

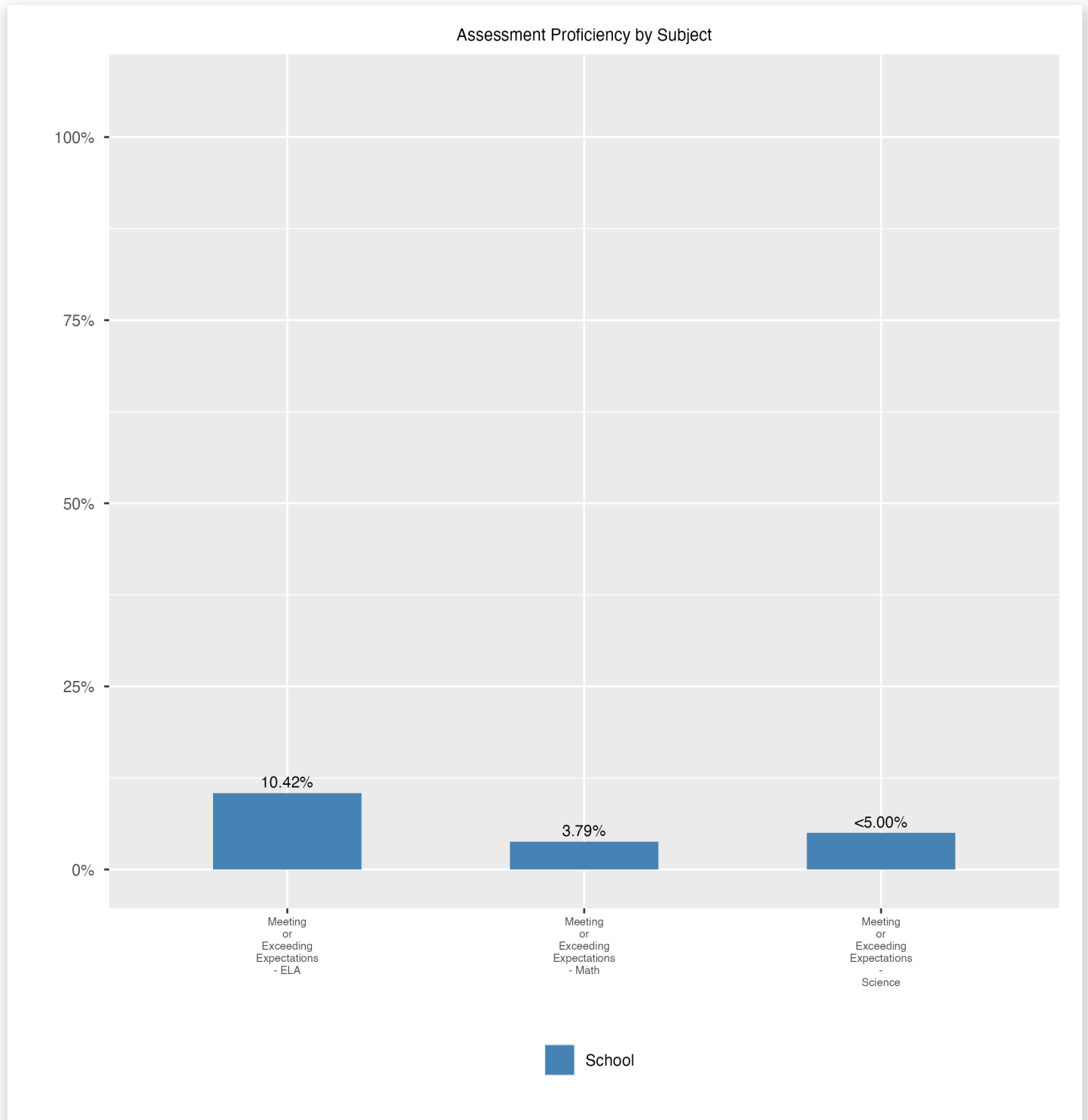


School Safety and Discipline

Information about discipline and school safety in DC, in accordance with the U.S. Department of Education's Civil Rights Data collection, including suspensions and expulsions for students, school related arrests, reported incidents of violence, bullying, and harassment are available in the OSSE Discipline report and data files (<https://osse.dc.gov/page/data-and-reports-0>).

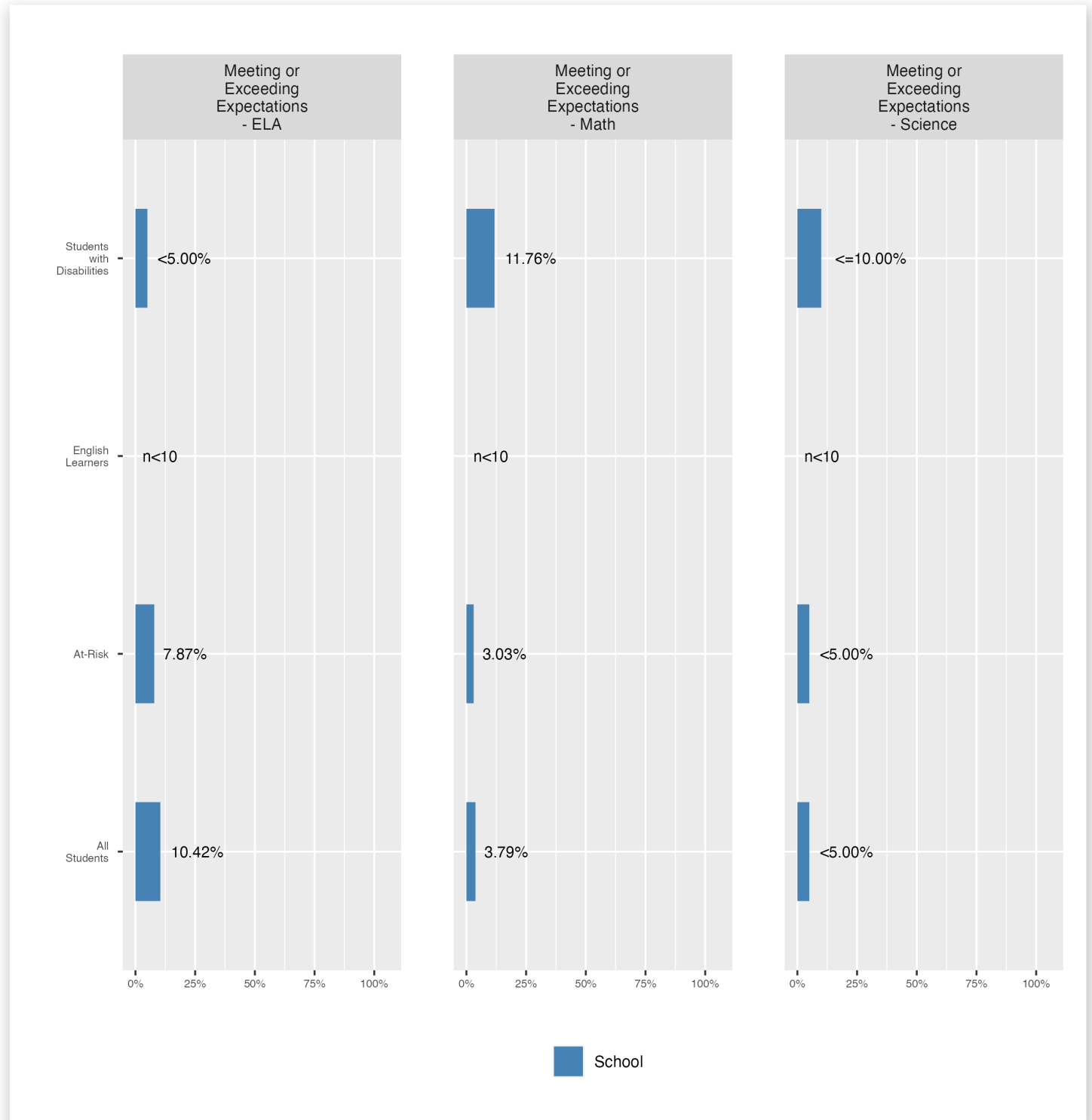
Assessment Proficiency by Subject

This page shows the percentage of students meeting or exceeding grade -or course- level expectations on statewide assessments in English language arts/literacy (ELA), mathematics, and science.



Assessment Proficiency by Group

This page shows the percentage of specific groups of students meeting or exceeding grade- or course-level expectations on statewide assessments.



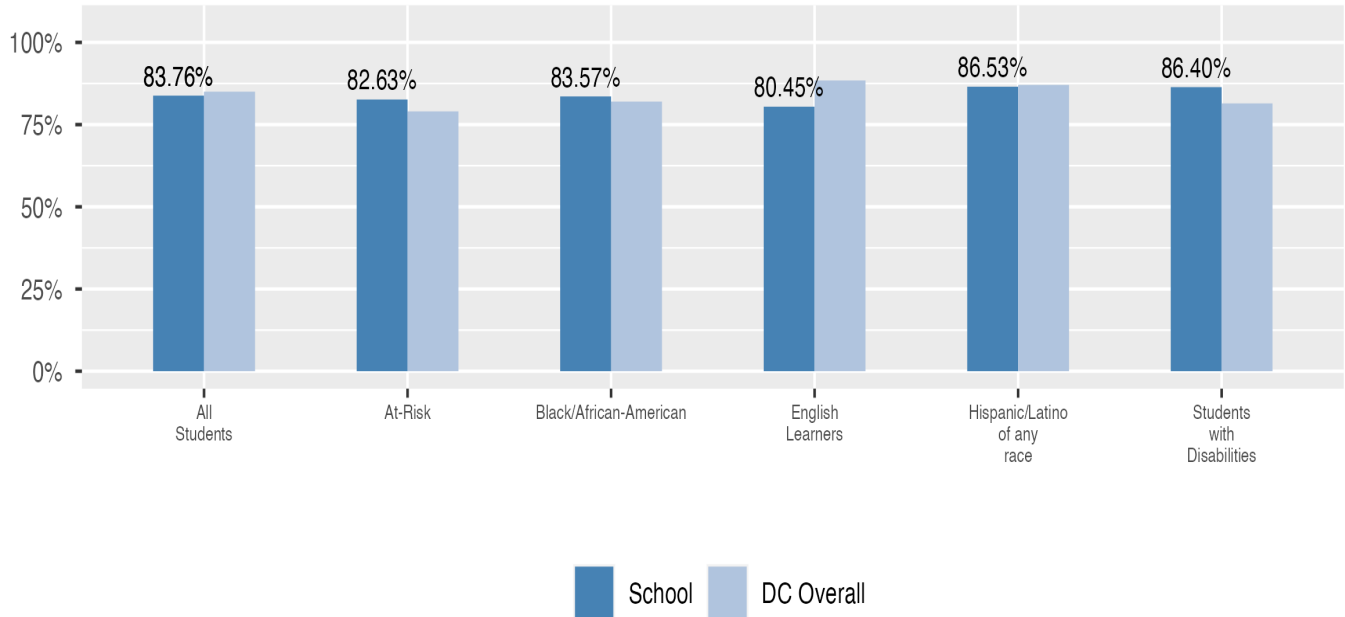
Proficiency by Subject

Statewide assessments in science are administered to students in grades 5 and 8, and students enrolled in high school biology. Missing data indicates that a school does not serve students required to take statewide science assessments.

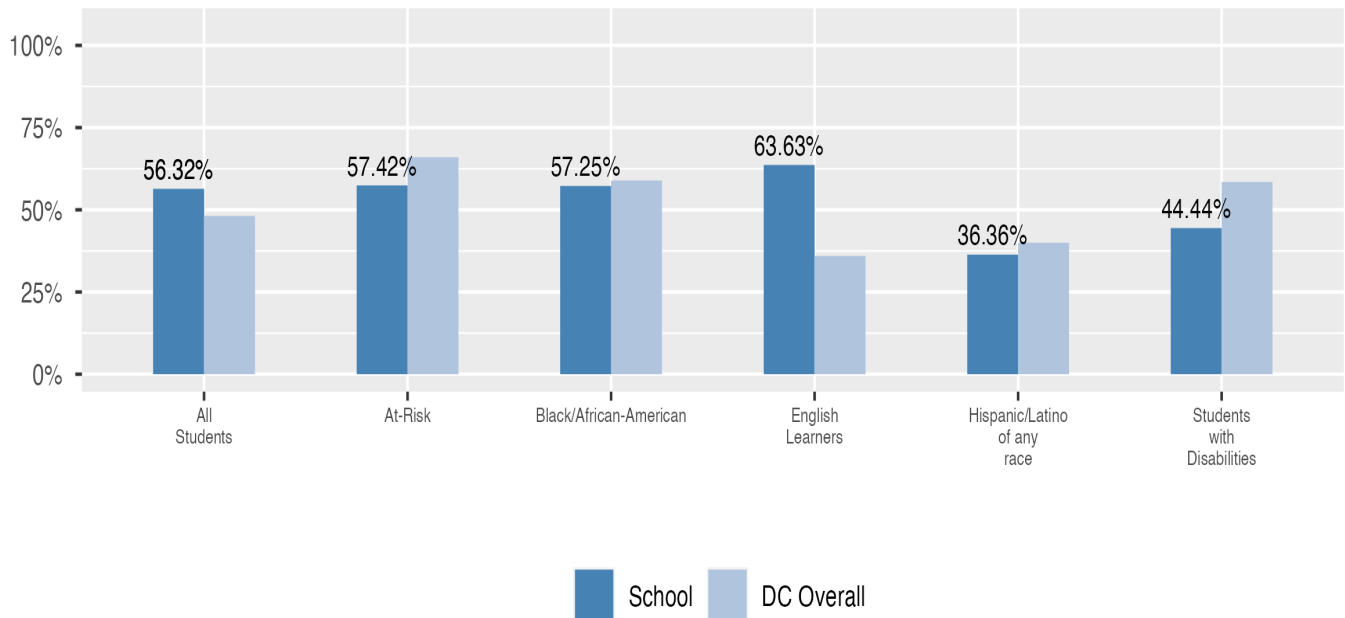
Attendance

Review information on attendance below, including in-seat attendance for all students (there is a separate measure of attendance for pre-K students, since pre-K is not compulsory), and the percentage of students chronically absent, meaning that they miss at least 10% of the school days for which they are enrolled throughout the school year at the school.

In-Seat Attendance



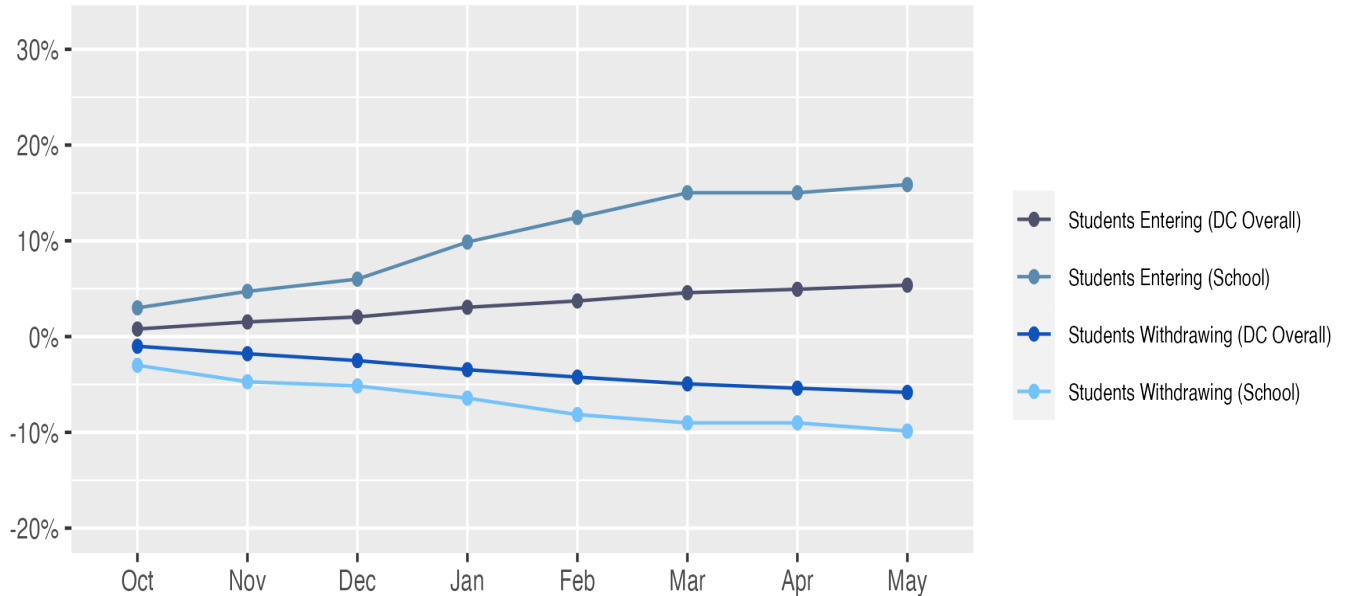
Chronic Absenteeism



Student Enrollment Changes

Explore information on how much the population at the school changes throughout the year or from year to year. It shows information about changes in enrollment, including whether students leave or enter the school mid-year, and whether eligible students choose to re-enroll in the school.

Mobility



Re-Enrollment

