

Message from the School

John Hayden Johnson Middle School- Home of the Panthers. At Johnson, excellence in academics, arts, and athletics is the standard. Our students engage with a robust curriculum and are invested in after-school arts and athletics clubs. In addition, we are a Project Lead The Way School, offering exceptional STEM enrichment. We leverage technology to support our instruction. Our students are stewards of their community because we provide rich, culturally relevant pedagogy designed to meet every child's unique needs.



📍 1400 Bruce Pl. SE, Washington, DC 20020

🏠 Ward 8

☎ (202) 939-3140

School Instructional Hours

Monday: 09:00AM - 03:30PM

Tuesday: 09:00AM - 03:30PM

Wednesday: 09:00AM - 03:30PM

Thursday: 09:00AM - 03:30PM

Friday: 09:00AM - 03:30PM

Total Students (2020-21 Ever-Enrolled): 373

Total Teachers: 30

Total School Leaders: 6

Grades Served: 6, 7, 8

Principal: Latisha Coleman

Title-I Status: Yes

Local Education Agency (LEA): District of Columbia Public Schools

School Uniforms Required: Yes

Bus Line(s): 92, D51, W1, W2, W3, W4, W6, W8, DC Circulator

Metro Line(s): Not Provided

Before Care Offered: No

After Care Offered: Yes

◦ **Cost:** Sliding Scale

School Program Information

Arts Integration
Career and Technical Education
Interscholastic Sports
Online learning
STEM Focus
Restorative Justice Program

Parent Organization

Parent Organization Offered: Yes

Parent Organization Contact: Natalie Hubbert
(pgptopresident@gmail.com)

Parent Organization Website:
www.dcps.dc.gov/page/parent-organizations

Extracurricular & Enrichment Activities

Project Lead the Way STEM
DCIAA Sports
Band
Dance
After School All-Stars

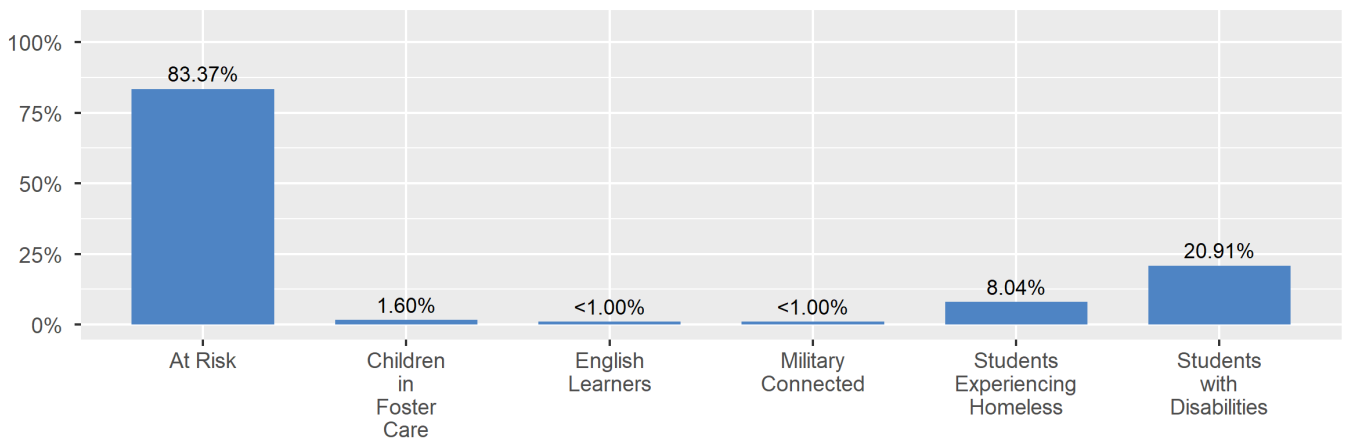
School Enrollment

The ever-enrolled count is the total number of students who are enrolled at any point during the school year; a student who attends a school for one day or 180 days is counted the same way. For this reason, the ever-enrolled count will always be larger than the audit count.

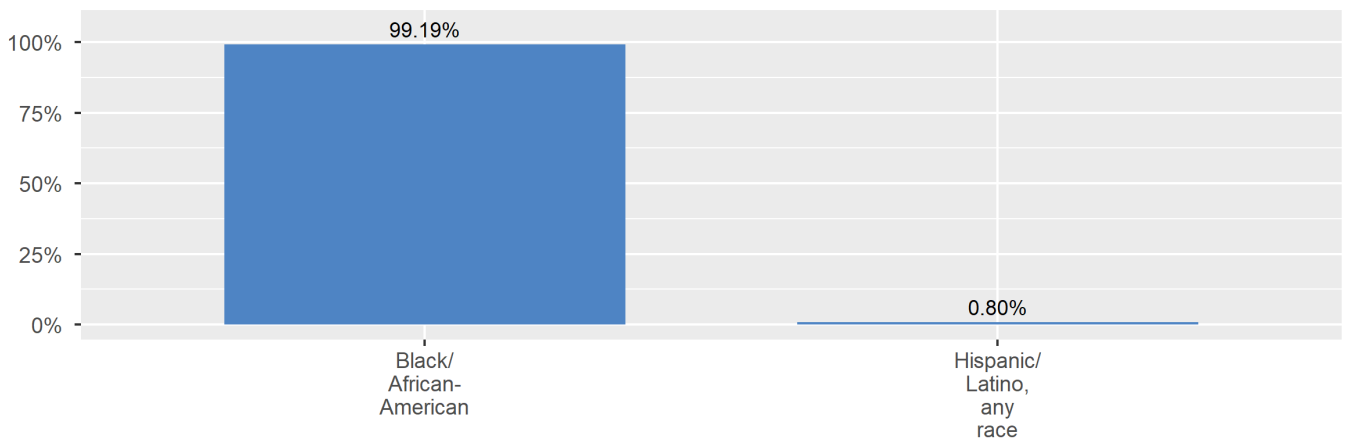
2020-21 Ever-Enrolled by Grade Level

| Grade 06 | Grade 07 | Grade 08 |
|----------|----------|----------|
| 118 | 120 | 135 |

Enrollment by Student Group

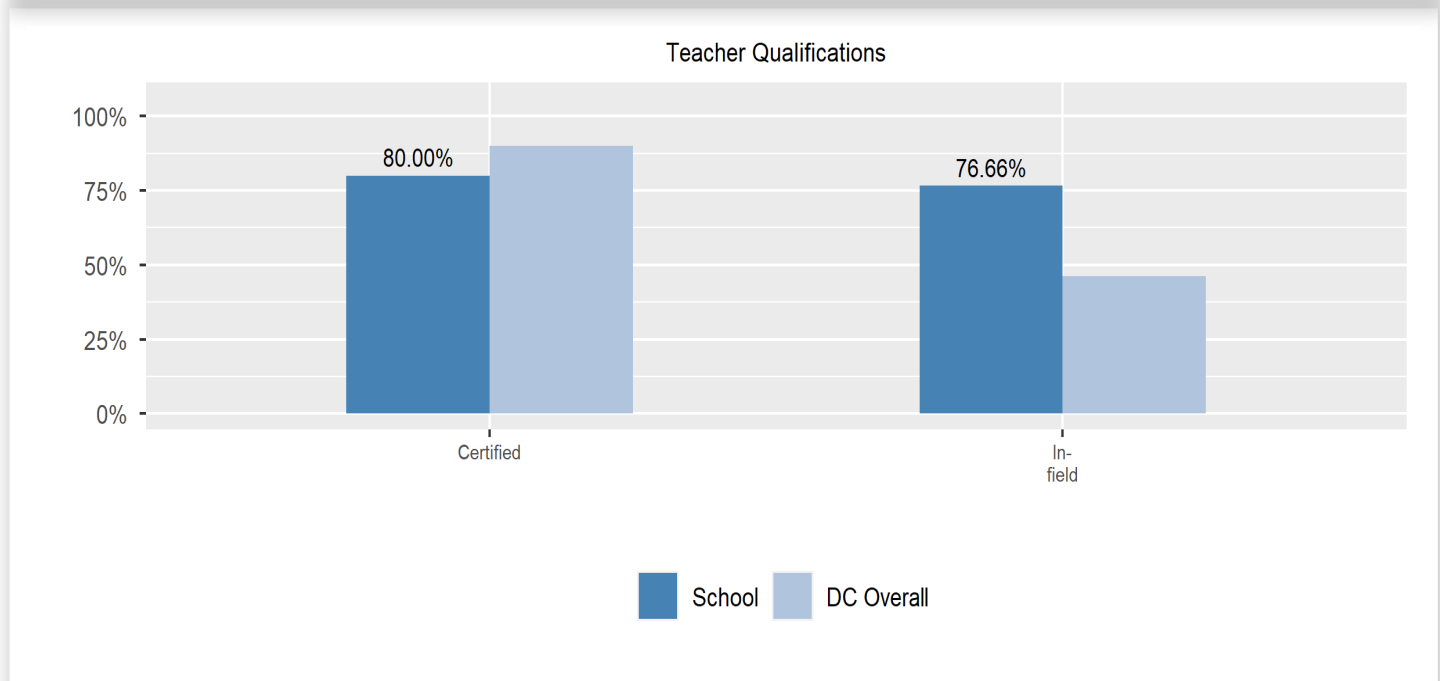
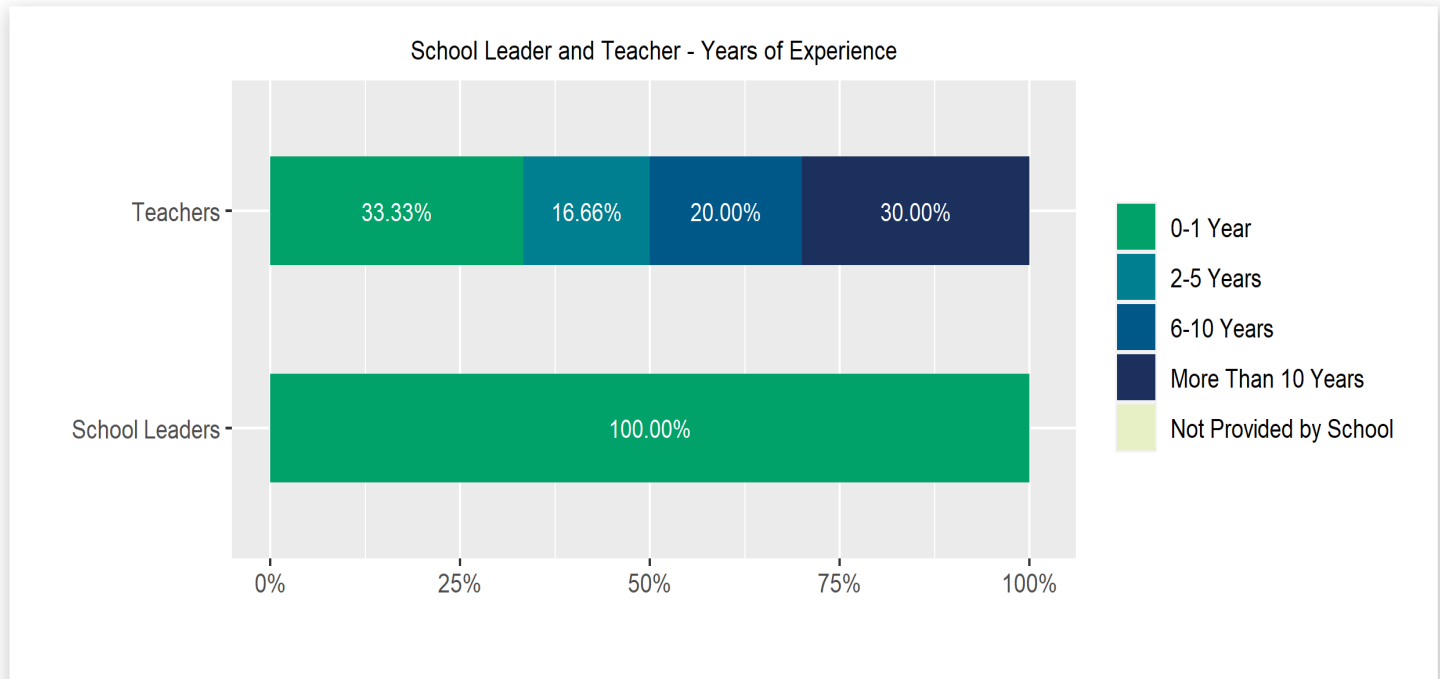


Enrollment by Race/Ethnicity



Teacher and School Leader Data

This page includes information about teacher experience levels in DC Public Schools and public charter schools. For DC Public Schools, it also includes information about credentialed and in-field teachers.



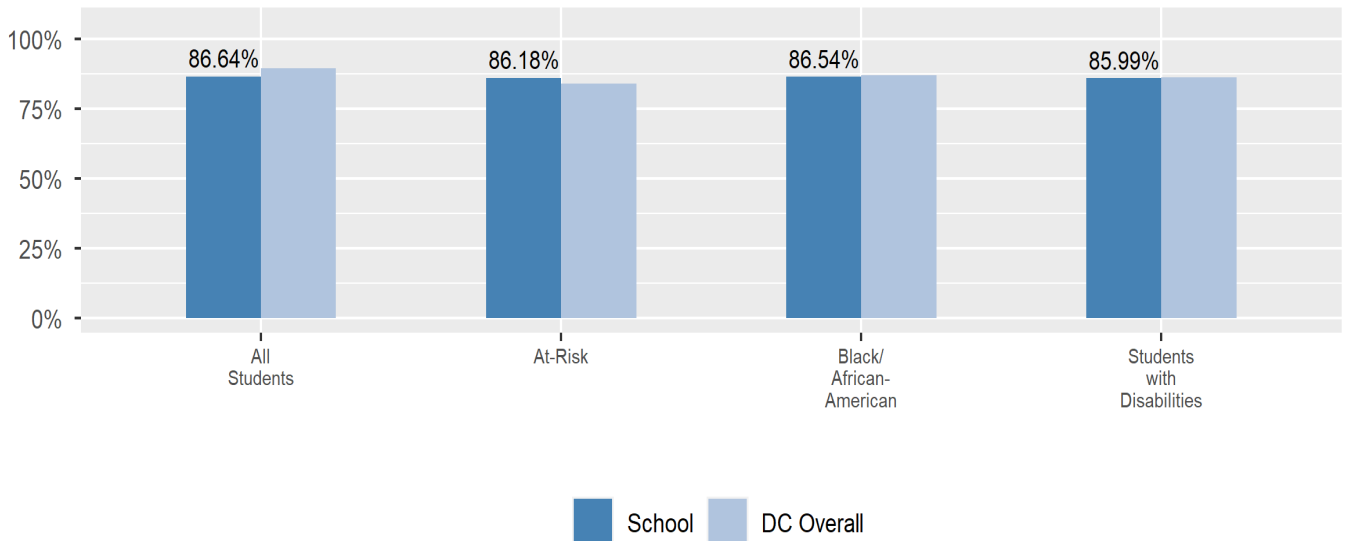
School Safety and Discipline

Information about discipline and school safety in DC, in accordance with the U.S. Department of Education's Civil Rights Data collection, including suspensions and expulsions for students, school related arrests, reported incidents of violence, bullying, and harassment are available in the OSSE Discipline report and data files (<https://osse.dc.gov/page/data-and-reports-0>).

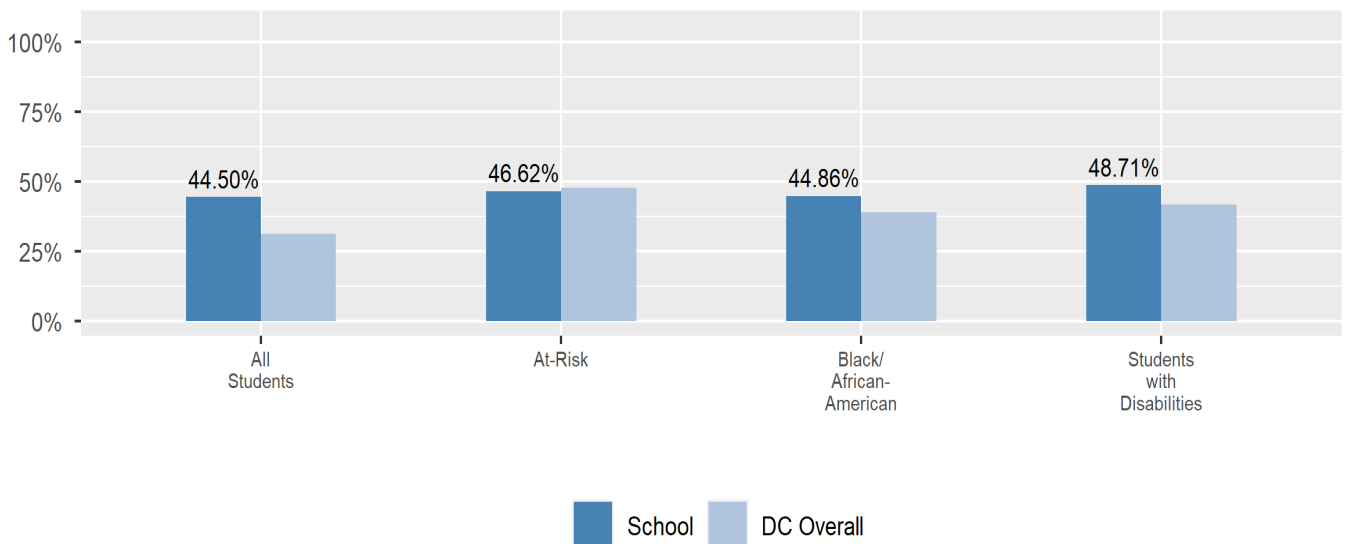
Attendance

Review information on attendance below, including in-seat attendance for all students (there is a separate measure of attendance for pre-K students, since pre-K is not compulsory), and the percentage of students chronically absent, meaning that they miss at least 10% of the school days for which they are enrolled throughout the school year at the school. Note: Due to variations in schools schedules, attendance data may have been collected differently by schools on synchronous and asynchronous learning days. As a result attendance data is unique to this school year and not necessarily comparable to prior years.

In-Seat Attendance



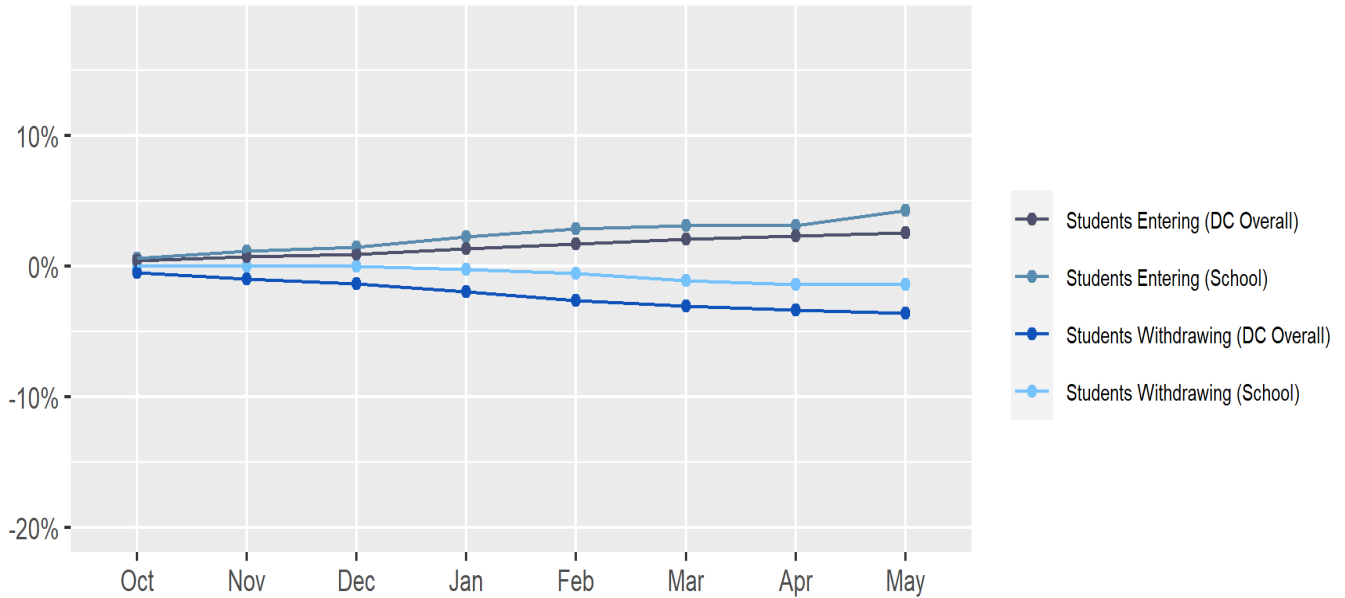
Chronic Absenteeism



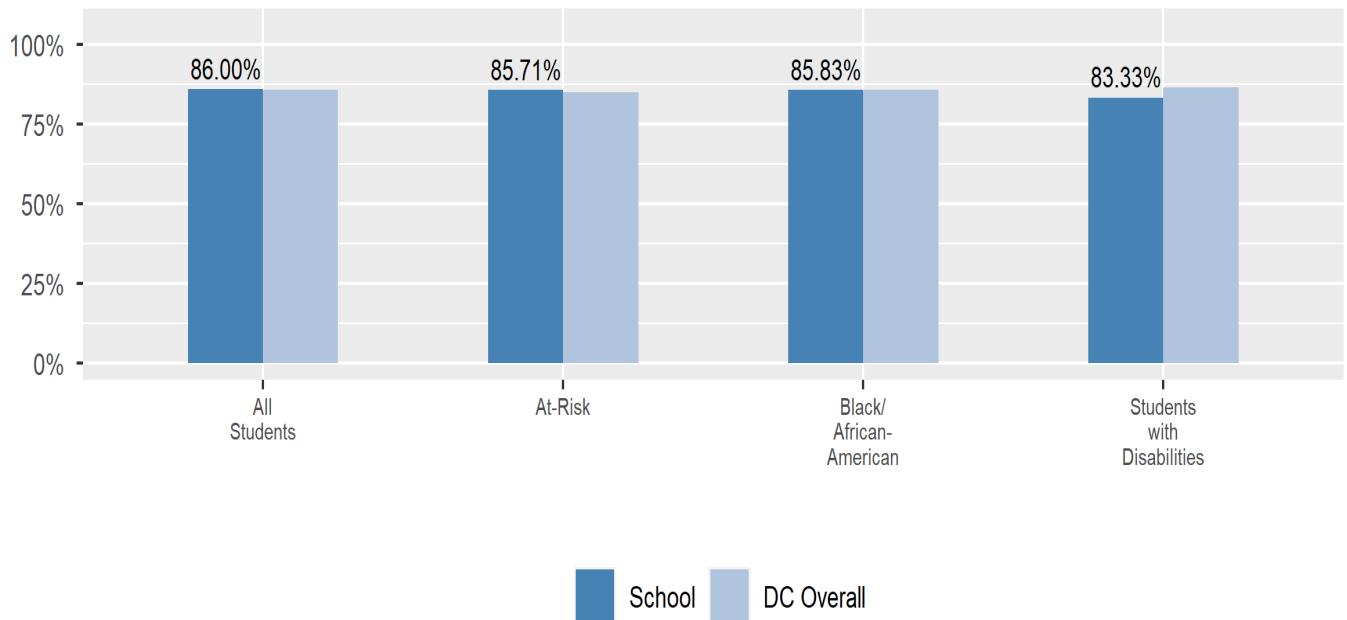
Student Enrollment Changes

Explore information on how much the population at the school changes throughout the year or from year to year. It shows information about changes in enrollment, including whether students leave or enter the school mid-year, and whether eligible students choose to re-enroll in the school.

Mobility



Re-Enrollment



Finance

Per-pupil expenditures represent the average amount of money spent on educating each student. In other words, this value represents the total amount of actual school expenditures divided by the number of students in the school.

2021 Per-pupil Expenditures

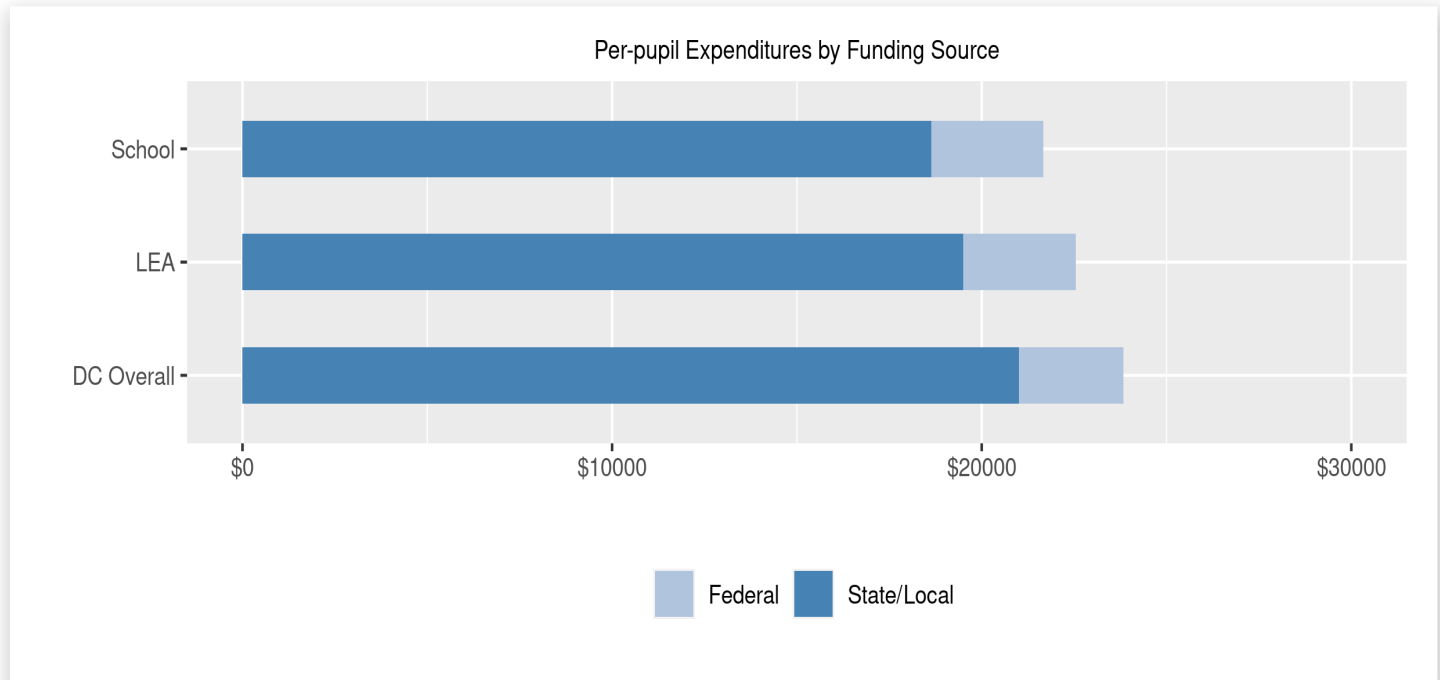
Per-pupil expenditure amount is calculated by dividing the total school expenditures by the October enrollment audit count of public school students.

Per-pupil: \$21,673

October Enrollment Audit Count: 354

Per-pupil Expenditures by Funding Source

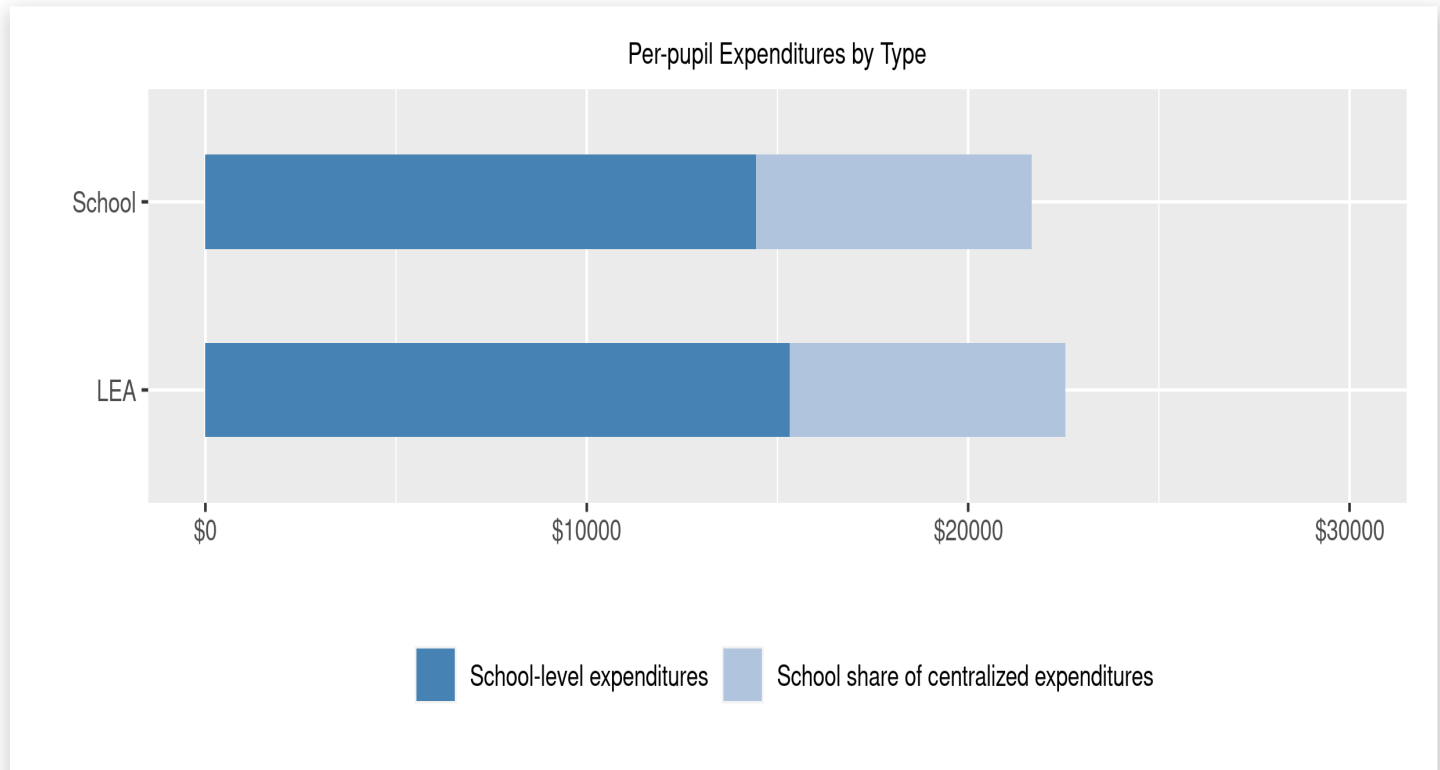
Details are provided about the funding sources for per-pupil expenditures. State/local sources represent revenue received directly from DC, including local grants and per-pupil funding. Federal sources include federal revenue, such as Title I funds and IDEA funding. Per-pupil expenditures are displayed compared to the LEA and DC average.



| | State/Local | Federal | Total |
|------------|-----------------|----------------|----------|
| School | \$18,642 86.01% | \$3,031 13.99% | \$21,673 |
| LEA | \$19,494 86.44% | \$3,059 13.56% | \$22,553 |
| DC Overall | \$21,002 88.14% | \$2,827 11.86% | \$23,828 |

Finance (cont.) - Per-pupil Expenditures by Type

Details are provided about the distribution of expenditures between school-level and centralized. School-level expenditures include spending on teacher and administrative salaries, books, supplies, and business costs. Centralized expenditures include the portion of spending at the LEA's central office that are allocated to the school. (Note: LEAs with only one school site do not report separate centralized expenditures)



| | School-level expenditures | School share of centralized expenditures | Total |
|-------------|---------------------------|--|----------|
| School | \$14,444 66.65% | \$7,229 33.35% | \$21,673 |
| State/Local | \$13,618 | \$5,024 | |
| Federal | \$826 | \$2,205 | |
| LEA | \$15,324 67.95% | \$7,229 32.05% | \$22,553 |
| State/Local | \$14,470 | \$5,024 | |
| Federal | \$854 | \$2,205 | |