

Message from the School

Eliot-Hine is an International Baccalaureate School rooted in our core values of excellence, responsibility, integrity, and community. Our goal is to develop inquisitive, international-minded learners who think globally and act compassionately. We offer rigorous academic and social-emotional instruction and opportunities to apply this learning in real-world scenarios.



1830 Constitution Ave. NE, Washington, DC 20002
Ward 6
(202) 939-5380

School Instructional Hours

Monday: 09:00AM - 03:30PM
Tuesday: 09:00AM - 03:30PM
Wednesday: 09:00AM - 03:30PM
Thursday: 09:00AM - 03:30PM
Friday: 09:00AM - 03:30PM

Total Students (2020-21 Ever-Enrolled): 276

Total Teachers: 25

Total School Leaders: 7

Grades Served: 6, 7, 8

Principal: Marlene Magrino

Title-I Status: Yes

Local Education Agency (LEA): District of Columbia Public Schools

School Uniforms Required: No

Bus Line(s): 96, B2, D6

Metro Line(s): Blue/Orange/Silver Lines: Stadium-Armory Station

Before Care Offered: No

After Care Offered: No

School Program Information

International
Baccalaureate

Parent Organization

Parent Organization Offered: Yes

Parent Organization Contact: Not Provided

Parent Organization Website:
www.dcps.dc.gov/page/parent-organizations

Extracurricular & Enrichment Activities

EH Network
 Higher Achievement
 One Common Unity
 United Nations Student Government
 Peace Keepers Peer Mediation

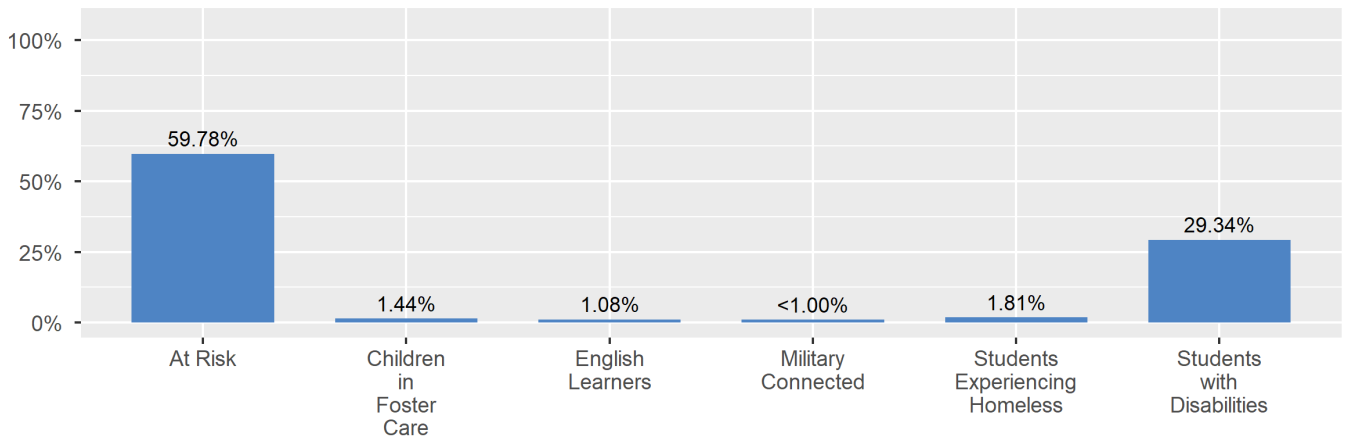
School Enrollment

The ever-enrolled count is the total number of students who are enrolled at any point during the school year; a student who attends a school for one day or 180 days is counted the same way. For this reason, the ever-enrolled count will always be larger than the audit count.

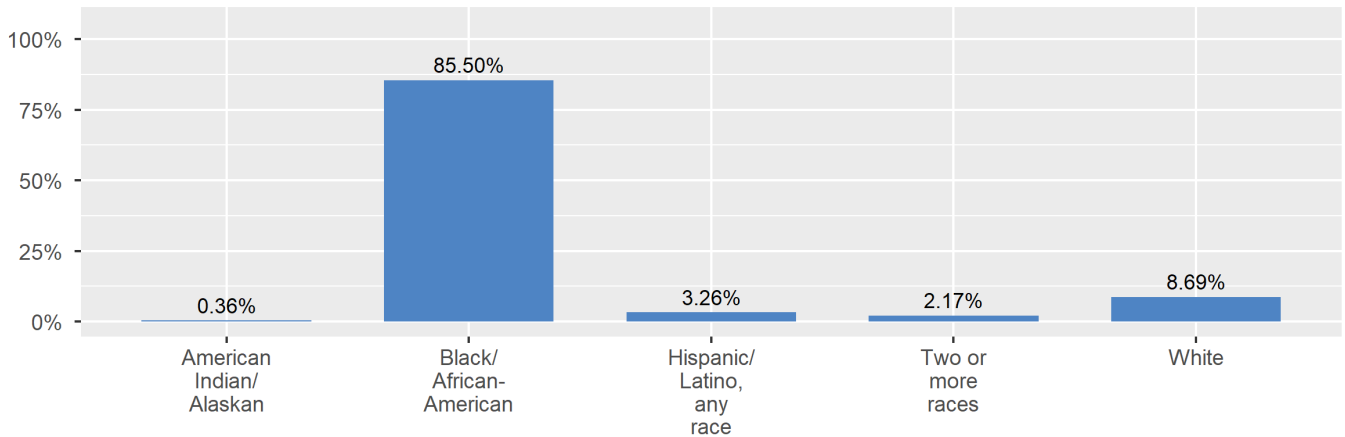
2020-21 Ever-Enrolled by Grade Level

Grade 06	Grade 07	Grade 08
81	110	85

Enrollment by Student Group



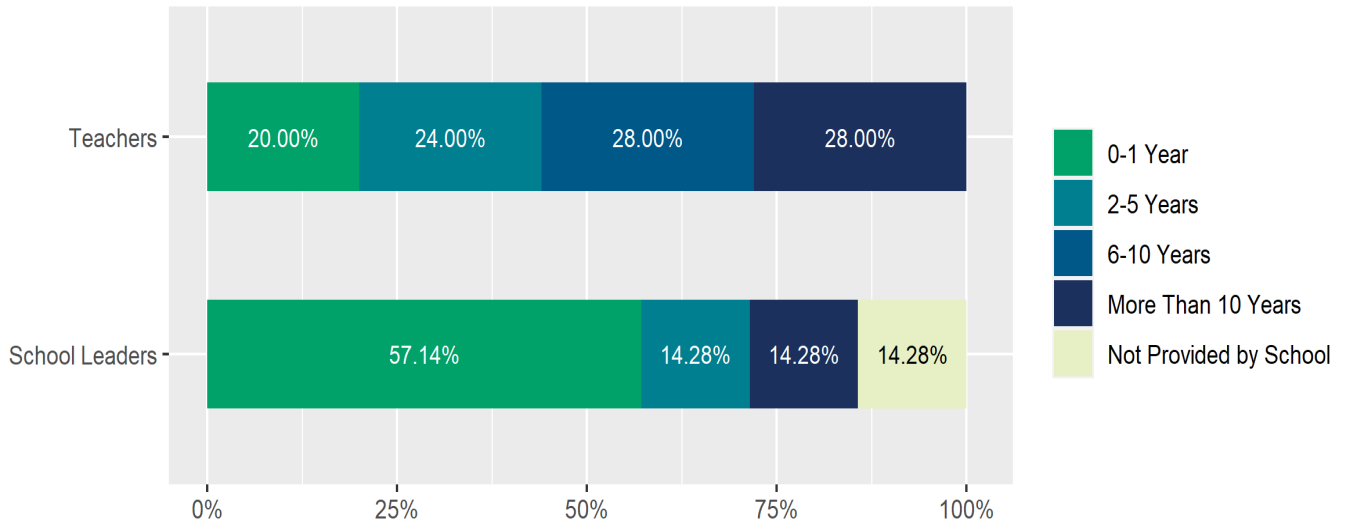
Enrollment by Race/Ethnicity



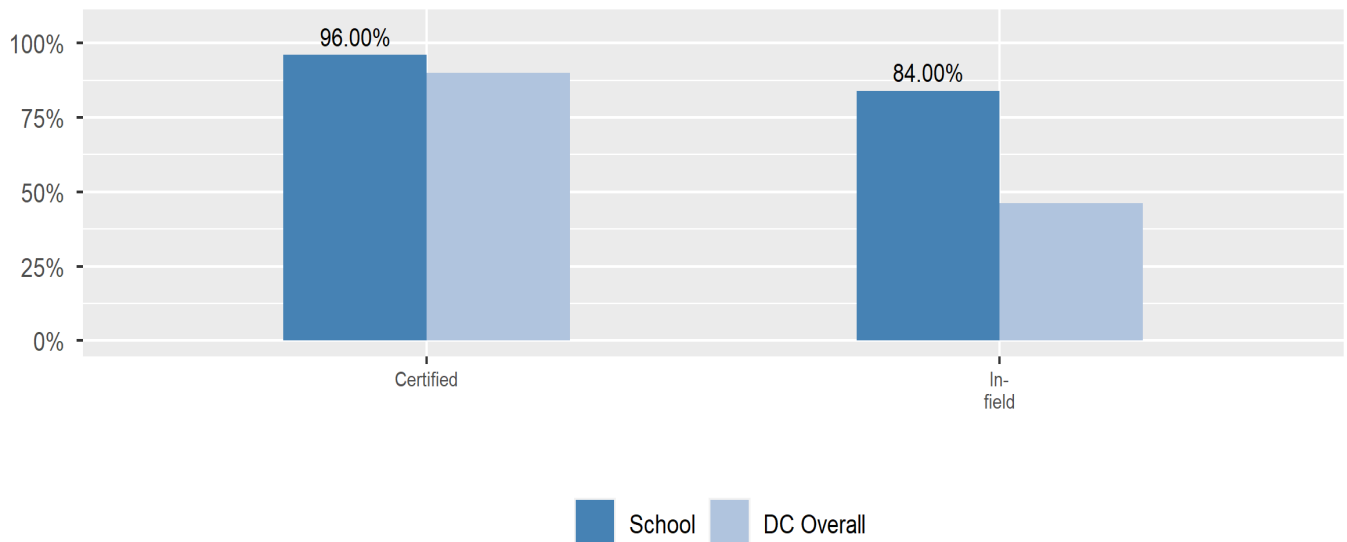
Teacher and School Leader Data

This page includes information about teacher experience levels in DC Public Schools and public charter schools. For DC Public Schools, it also includes information about credentialed and in-field teachers.

School Leader and Teacher - Years of Experience



Teacher Qualifications



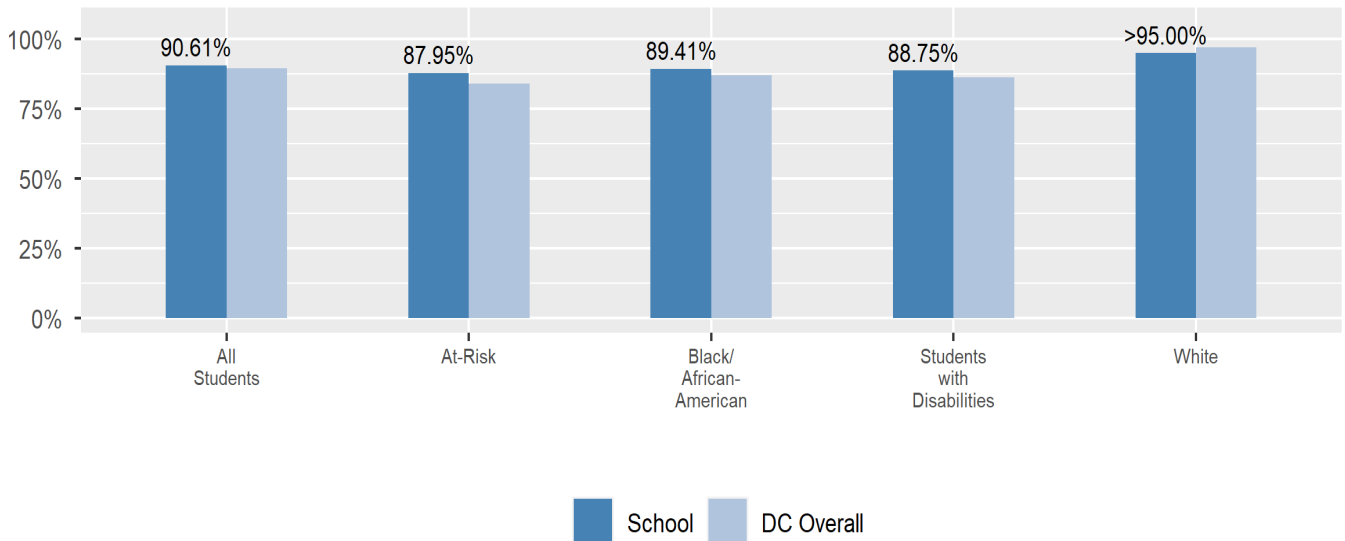
School Safety and Discipline

Information about discipline and school safety in DC, in accordance with the U.S. Department of Education's Civil Rights Data collection, including suspensions and expulsions for students, school related arrests, reported incidents of violence, bullying, and harassment are available in the OSSE Discipline report and data files (<https://osse.dc.gov/page/data-and-reports-0>).

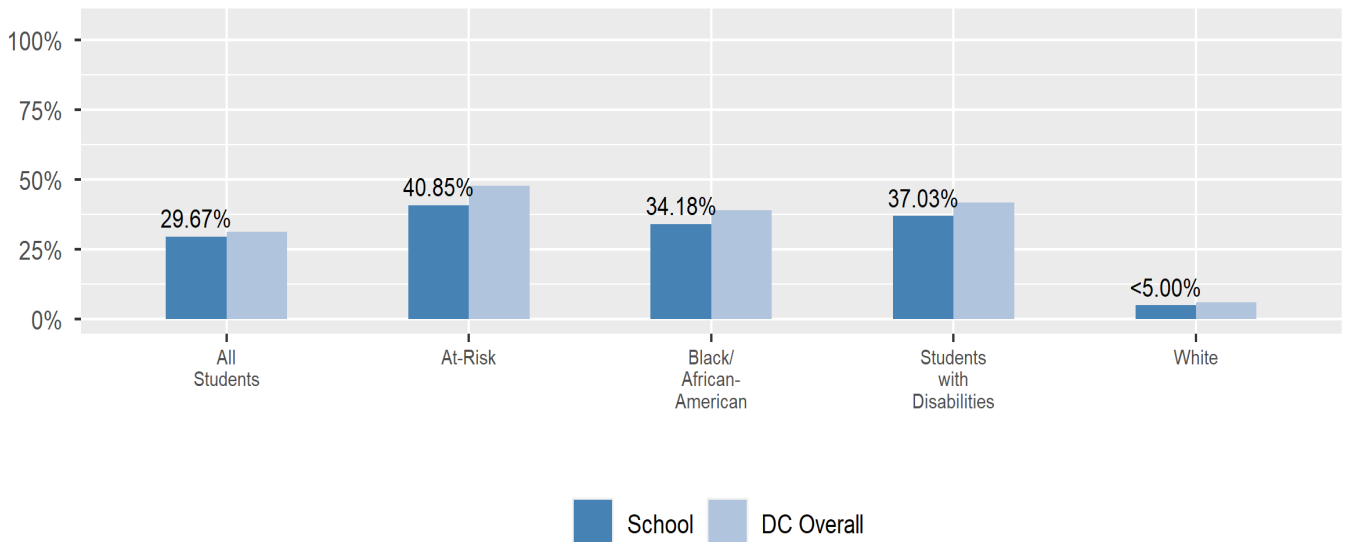
Attendance

Review information on attendance below, including in-seat attendance for all students (there is a separate measure of attendance for pre-K students, since pre-K is not compulsory), and the percentage of students chronically absent, meaning that they miss at least 10% of the school days for which they are enrolled throughout the school year at the school. Note: Due to variations in schools schedules, attendance data may have been collected differently by schools on synchronous and asynchronous learning days. As a result attendance data is unique to this school year and not necessarily comparable to prior years.

In-Seat Attendance



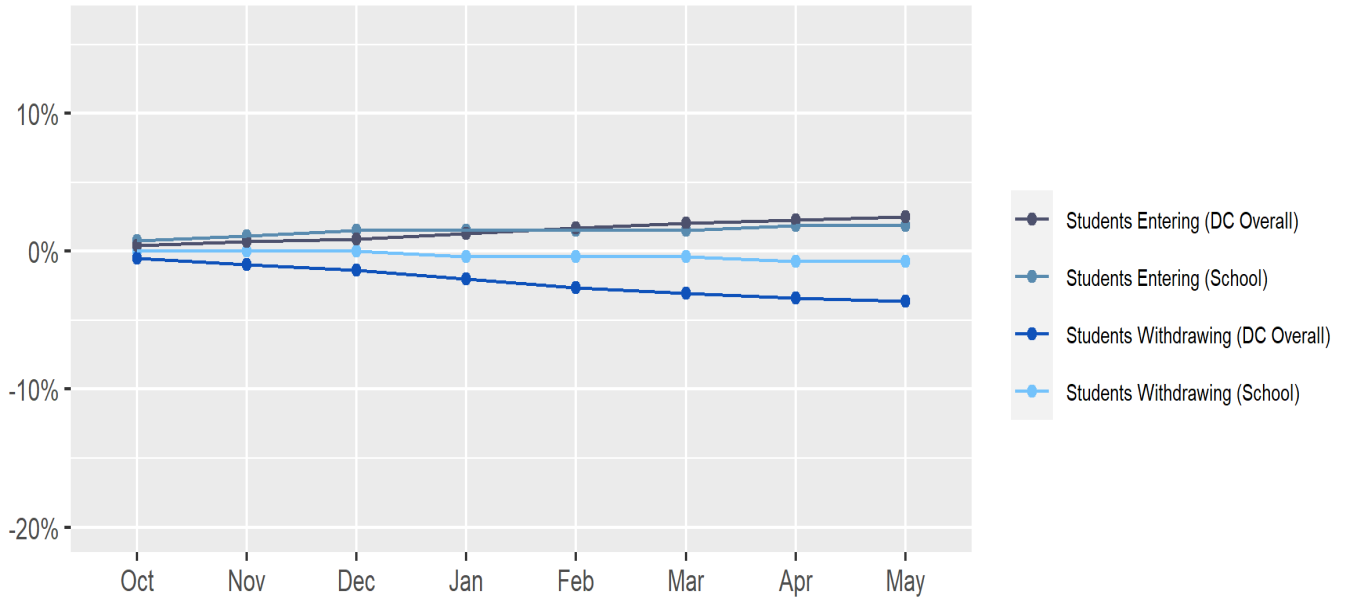
Chronic Absenteeism



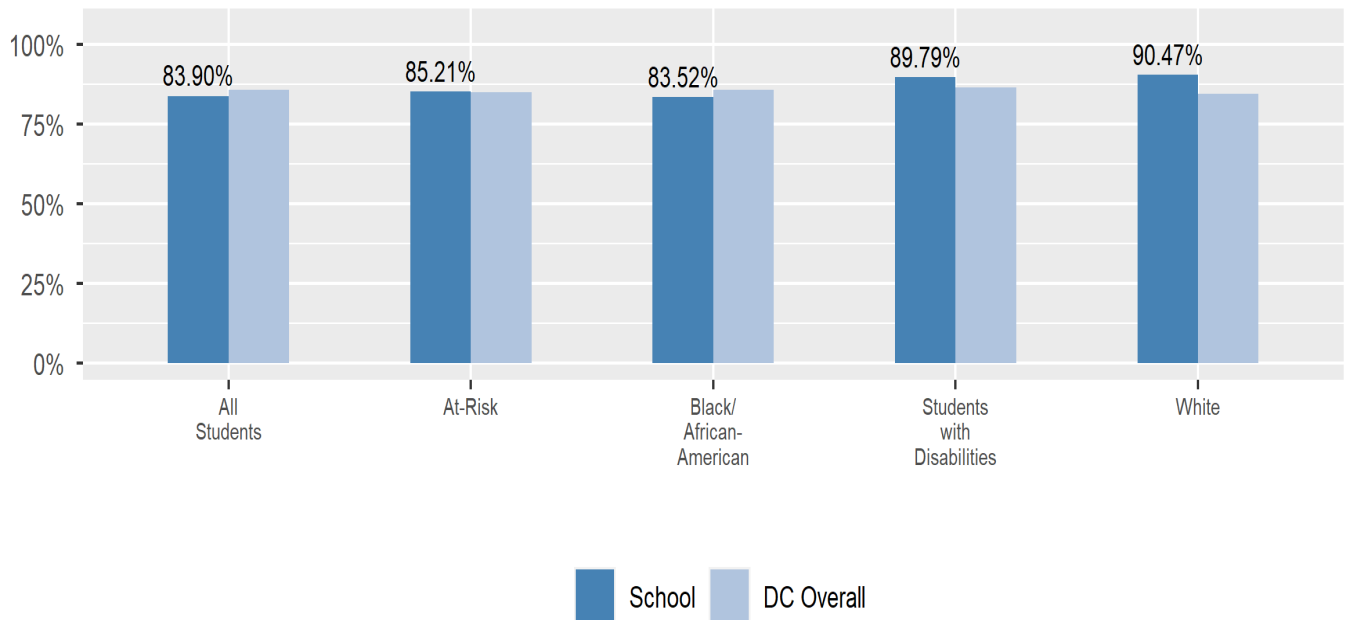
Student Enrollment Changes

Explore information on how much the population at the school changes throughout the year or from year to year. It shows information about changes in enrollment, including whether students leave or enter the school mid-year, and whether eligible students choose to re-enroll in the school.

Mobility



Re-Enrollment



Finance

Per-pupil expenditures represent the average amount of money spent on educating each student. In other words, this value represents the total amount of actual school expenditures divided by the number of students in the school.

2021 Per-pupil Expenditures

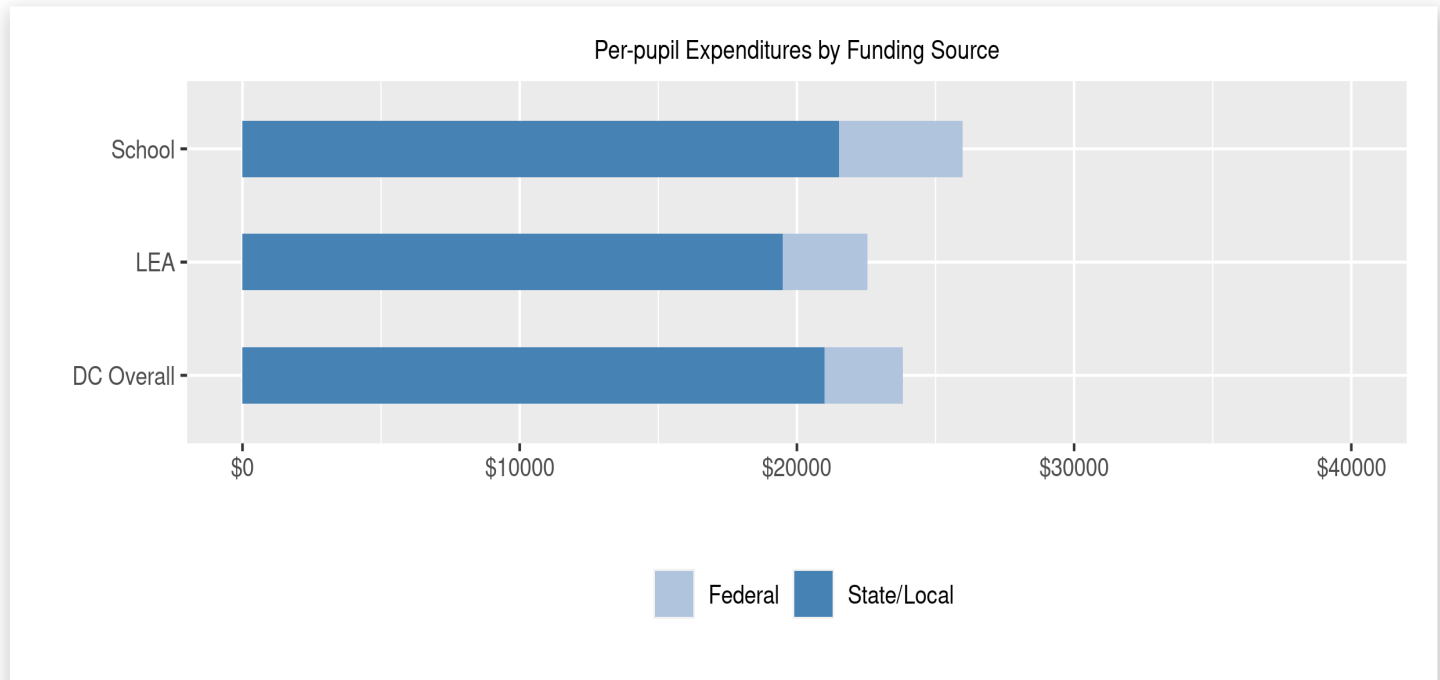
Per-pupil expenditure amount is calculated by dividing the total school expenditures by the October enrollment audit count of public school students.

Per-pupil: \$25,982

October Enrollment Audit Count: 266

Per-pupil Expenditures by Funding Source

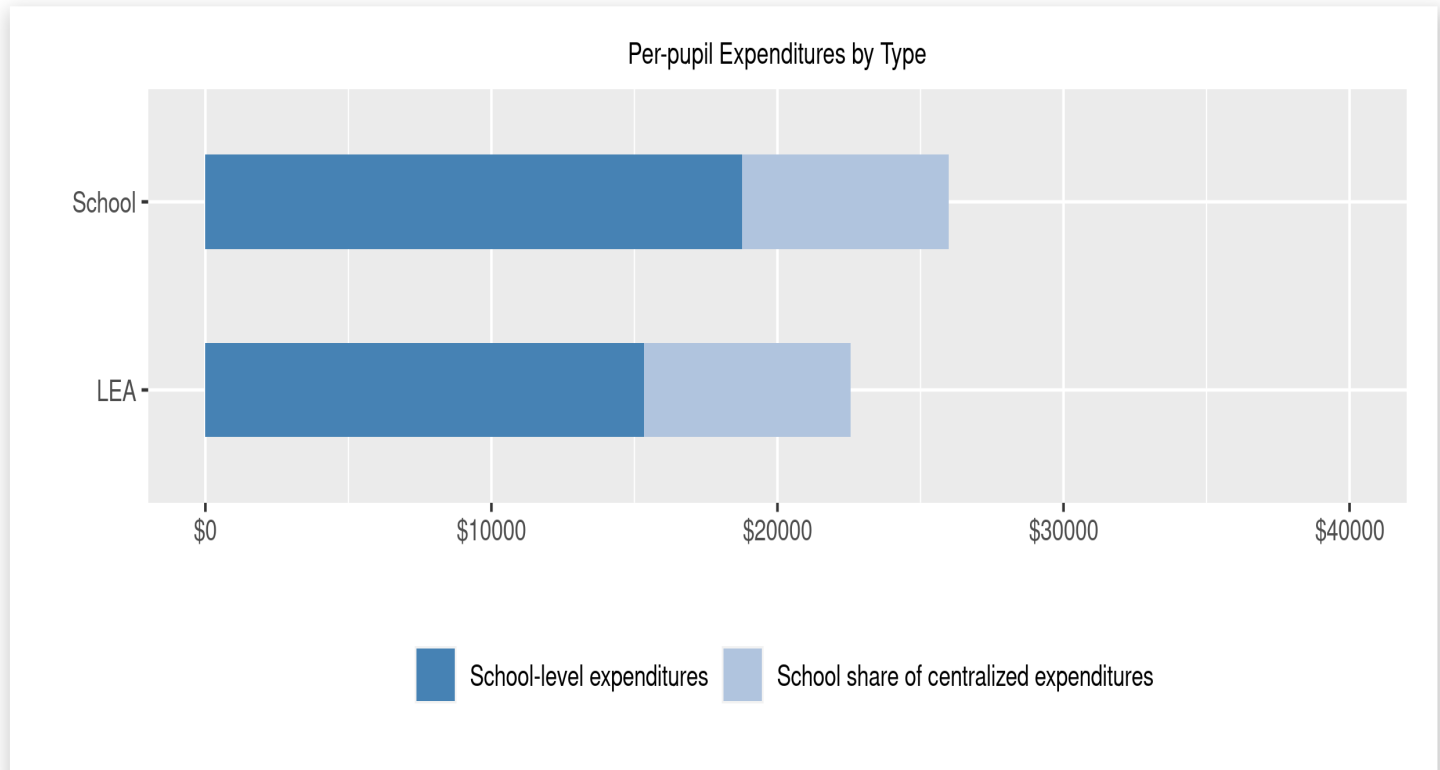
Details are provided about the funding sources for per-pupil expenditures. State/local sources represent revenue received directly from DC, including local grants and per-pupil funding. Federal sources include federal revenue, such as Title I funds and IDEA funding. Per-pupil expenditures are displayed compared to the LEA and DC average.



	State/Local	Federal	Total
School	\$21,509 82.78%	\$4,473 17.22%	\$25,982
LEA	\$19,494 86.44%	\$3,059 13.56%	\$22,553
DC Overall	\$21,002 88.14%	\$2,827 11.86%	\$23,828

Finance (cont.) - Per-pupil Expenditures by Type

Details are provided about the distribution of expenditures between school-level and centralized. School-level expenditures include spending on teacher and administrative salaries, books, supplies, and business costs. Centralized expenditures include the portion of spending at the LEA's central office that are allocated to the school. (Note: LEAs with only one school site do not report separate centralized expenditures)



	School-level expenditures	School share of centralized expenditures	Total
School	\$18,753 72.18%	\$7,229 27.82%	\$25,982
State/Local	\$16,485	\$5,024	
Federal	\$2,268	\$2,205	
LEA	\$15,324 67.95%	\$7,229 32.05%	\$22,553
State/Local	\$14,470	\$5,024	
Federal	\$854	\$2,205	