

Message from the School

Alice Deal Middle School combines a rigorous academic program with the nurturing environment of a neighborhood school. Located in the heart of northwest DC, the Deal Middle School campus includes the original historic Deal building, modernized to meet the needs of a blended learning environment, merged with new construction to meet the needs of a robust middle school community.



📍 3815 Fort Dr. NW, Washington, DC 20016

🏠 Ward 3

☎ (202) 939-2010

School Instructional Hours

Monday: 09:00AM - 03:30PM

Tuesday: 09:00AM - 03:30PM

Wednesday: 09:00AM - 03:30PM

Thursday: 09:00AM - 03:30PM

Friday: 09:00AM - 03:30PM

Total Students (2020-21 Ever-Enrolled): 1499

Total Teachers: 120

Total School Leaders: 11

Grades Served: 6, 7, 8

Principal: Diedre Neal

Title-I Status: No

Local Education Agency (LEA): District of Columbia Public Schools

School Uniforms Required: No

Bus Line(s): 31, 33, 96, D31, D32, D33, D34, H2, H4, L2, M4, N2

Metro Line(s): Red Line: Tenleytown-AU station

Before Care Offered: Yes

- **Cost:** Sliding Scale

After Care Offered: Yes

- **Cost:** Sliding Scale

School Program Information

Arts Integration
Dual Lang/Lang. Immersion
International Baccalaureate
Restorative Justice Program

Parent Organization

Parent Organization Offered: Yes

Parent Organization Contact: Jenny Backus
(alicedealtreasurer@gmail.com)

Parent Organization Website:
www.dcps.dc.gov/page/parent-organizations

Extracurricular & Enrichment Activities

French
Mandarin
Chinese
National History Day
Debate/Forensics
MathCounts
Robotics

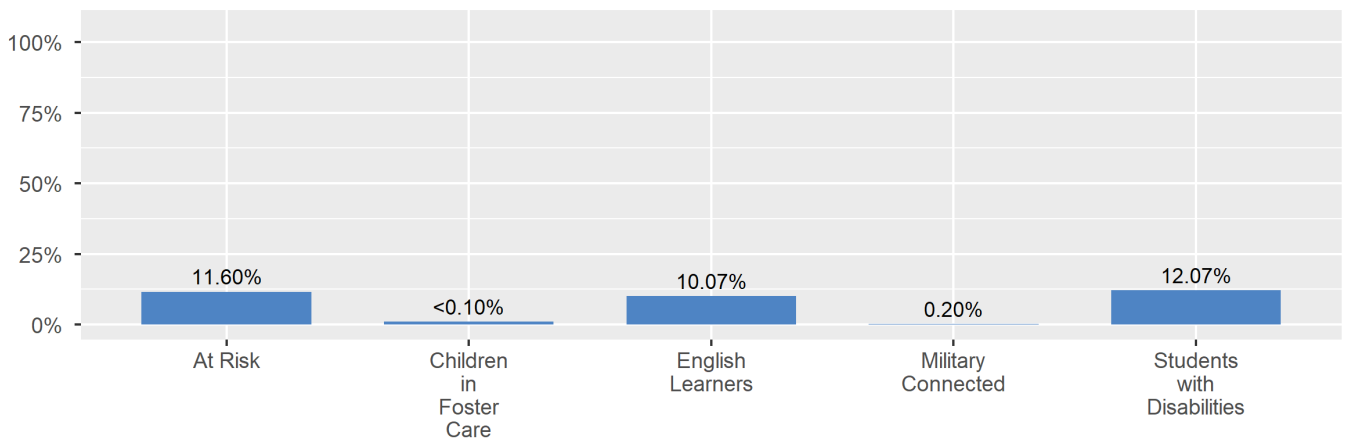
School Enrollment

The ever-enrolled count is the total number of students who are enrolled at any point during the school year; a student who attends a school for one day or 180 days is counted the same way. For this reason, the ever-enrolled count will always be larger than the audit count.

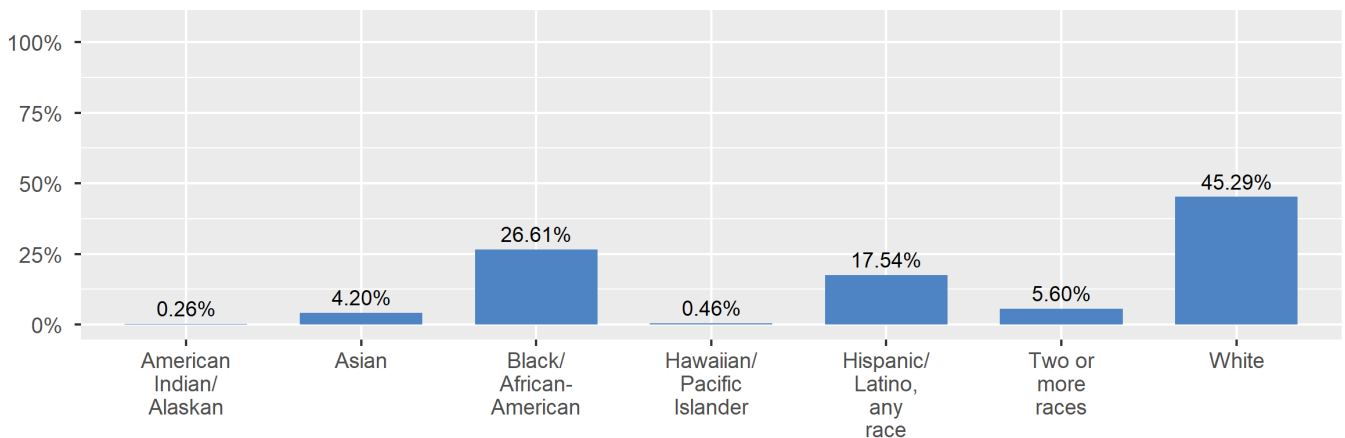
2020-21 Ever-Enrolled by
Grade Level

Grade 06	Grade 07	Grade 08
510	482	507

Enrollment by Student Group

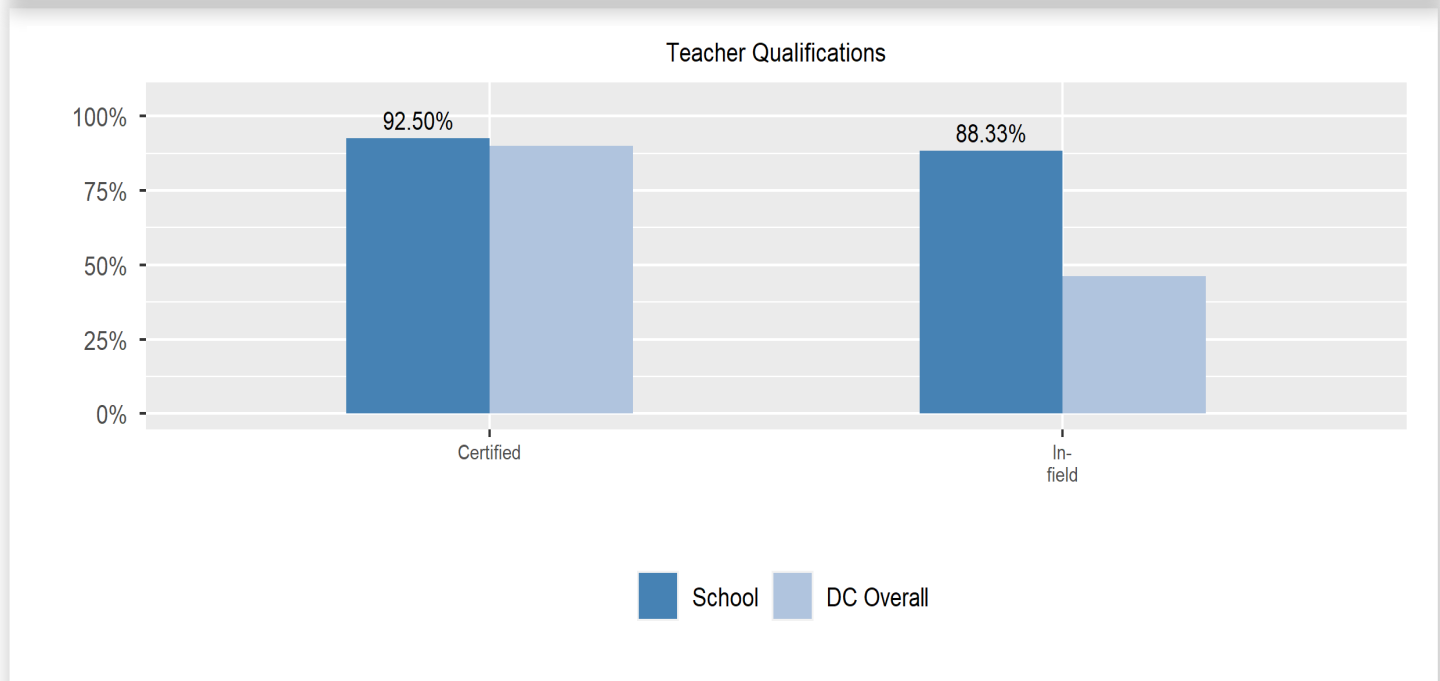
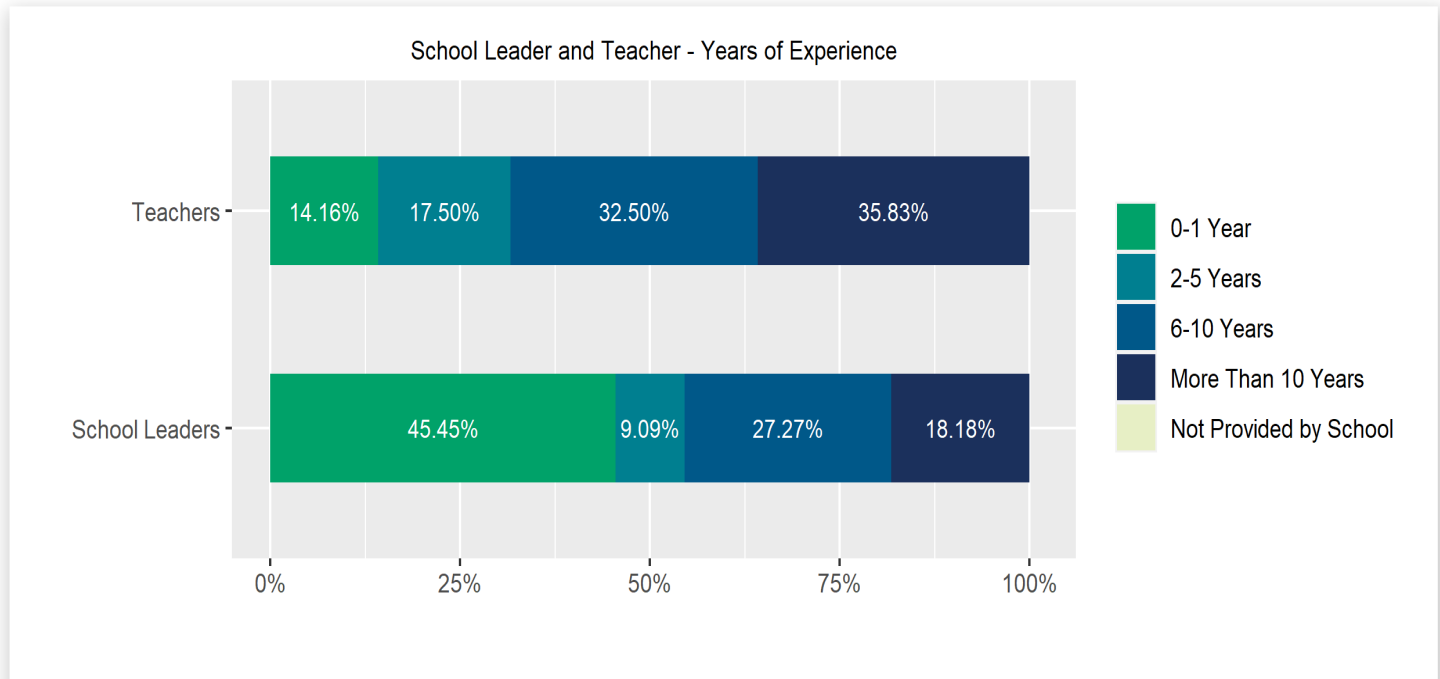


Enrollment by Race/Ethnicity



Teacher and School Leader Data

This page includes information about teacher experience levels in DC Public Schools and public charter schools. For DC Public Schools, it also includes information about credentialed and in-field teachers.



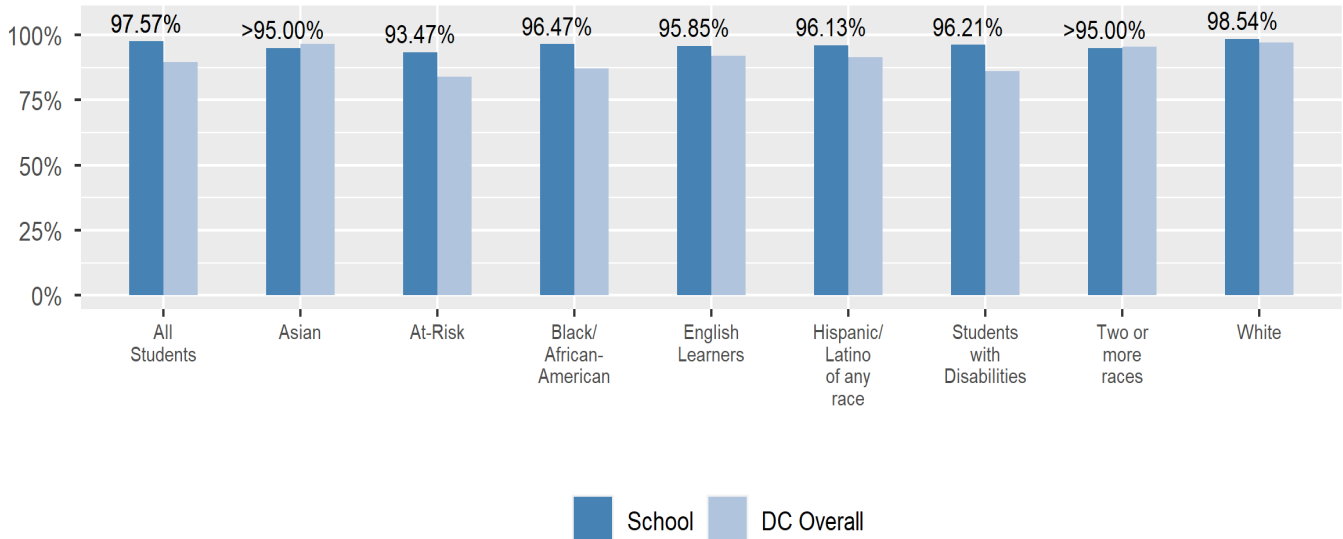
School Safety and Discipline

Information about discipline and school safety in DC, in accordance with the U.S. Department of Education's Civil Rights Data collection, including suspensions and expulsions for students, school related arrests, reported incidents of violence, bullying, and harassment are available in the OSSE Discipline report and data files (<https://osse.dc.gov/page/data-and-reports-0>).

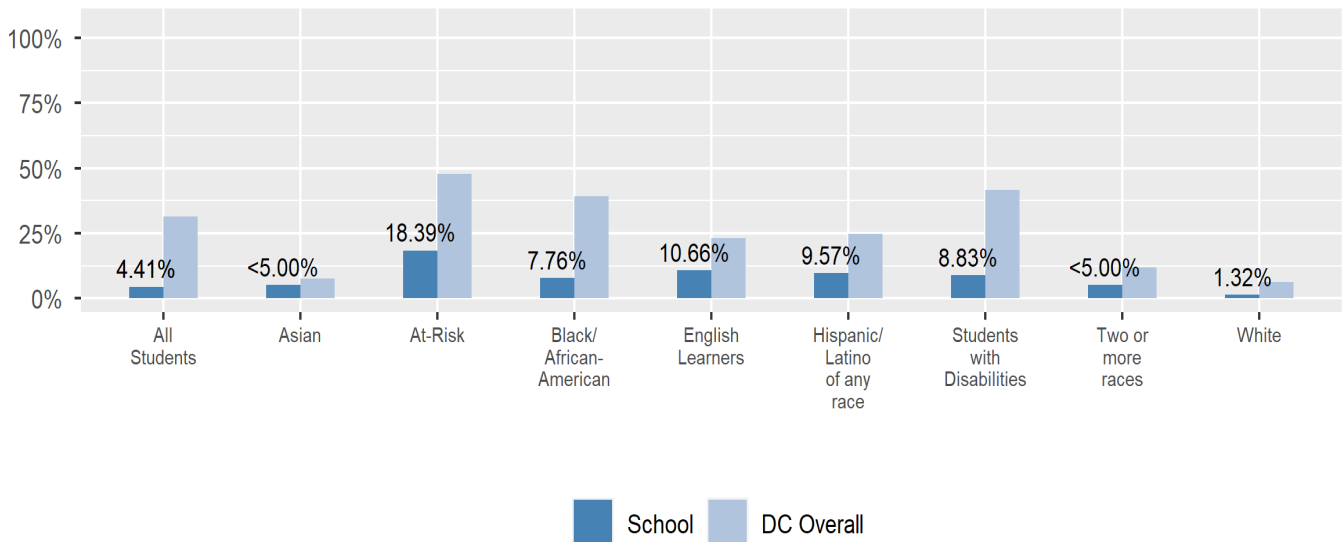
Attendance

Review information on attendance below, including in-seat attendance for all students (there is a separate measure of attendance for pre-K students, since pre-K is not compulsory), and the percentage of students chronically absent, meaning that they miss at least 10% of the school days for which they are enrolled throughout the school year at the school. Note: Due to variations in schools schedules, attendance data may have been collected differently by schools on synchronous and asynchronous learning days. As a result attendance data is unique to this school year and not necessarily comparable to prior years.

In-Seat Attendance



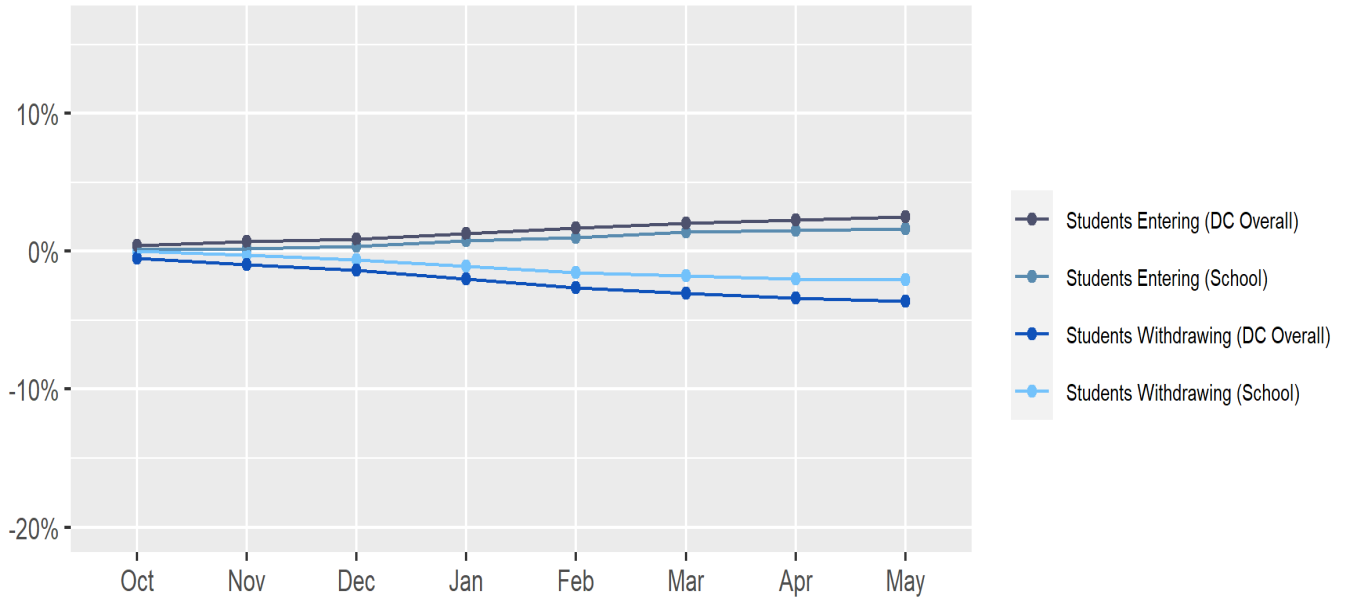
Chronic Absenteeism



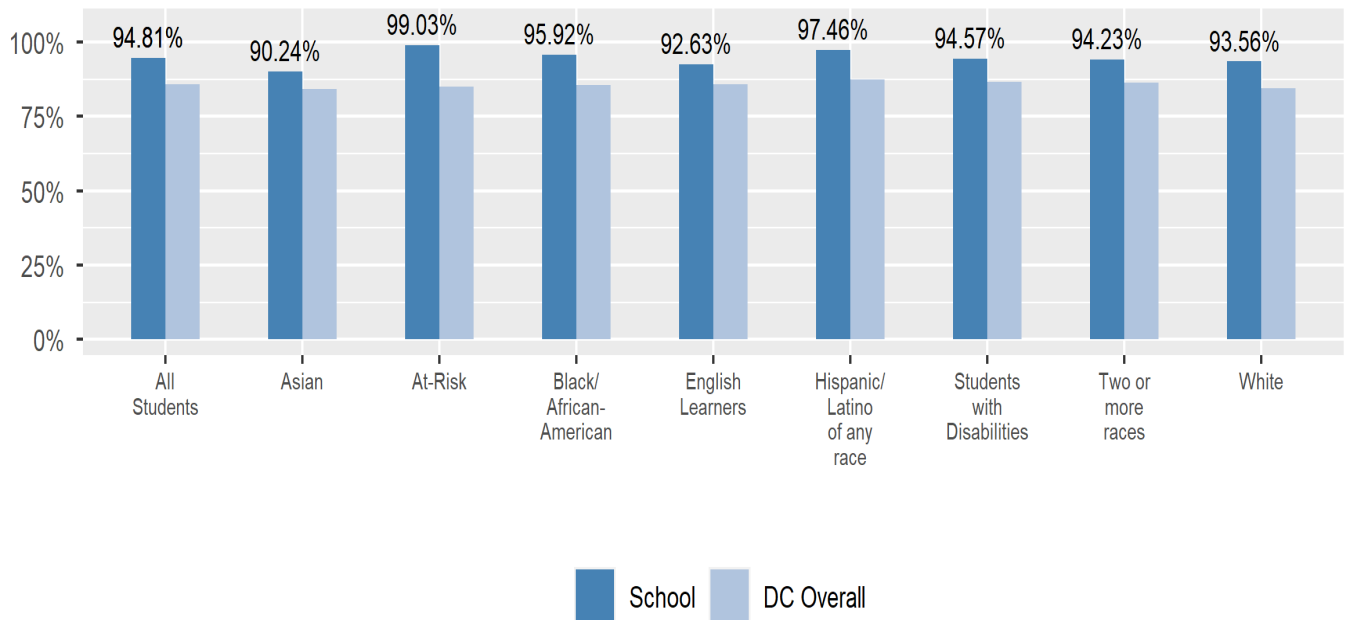
Student Enrollment Changes

Explore information on how much the population at the school changes throughout the year or from year to year. It shows information about changes in enrollment, including whether students leave or enter the school mid-year, and whether eligible students choose to re-enroll in the school.

Mobility



Re-Enrollment



Finance

Per-pupil expenditures represent the average amount of money spent on educating each student. In other words, this value represents the total amount of actual school expenditures divided by the number of students in the school.

2021 Per-pupil Expenditures

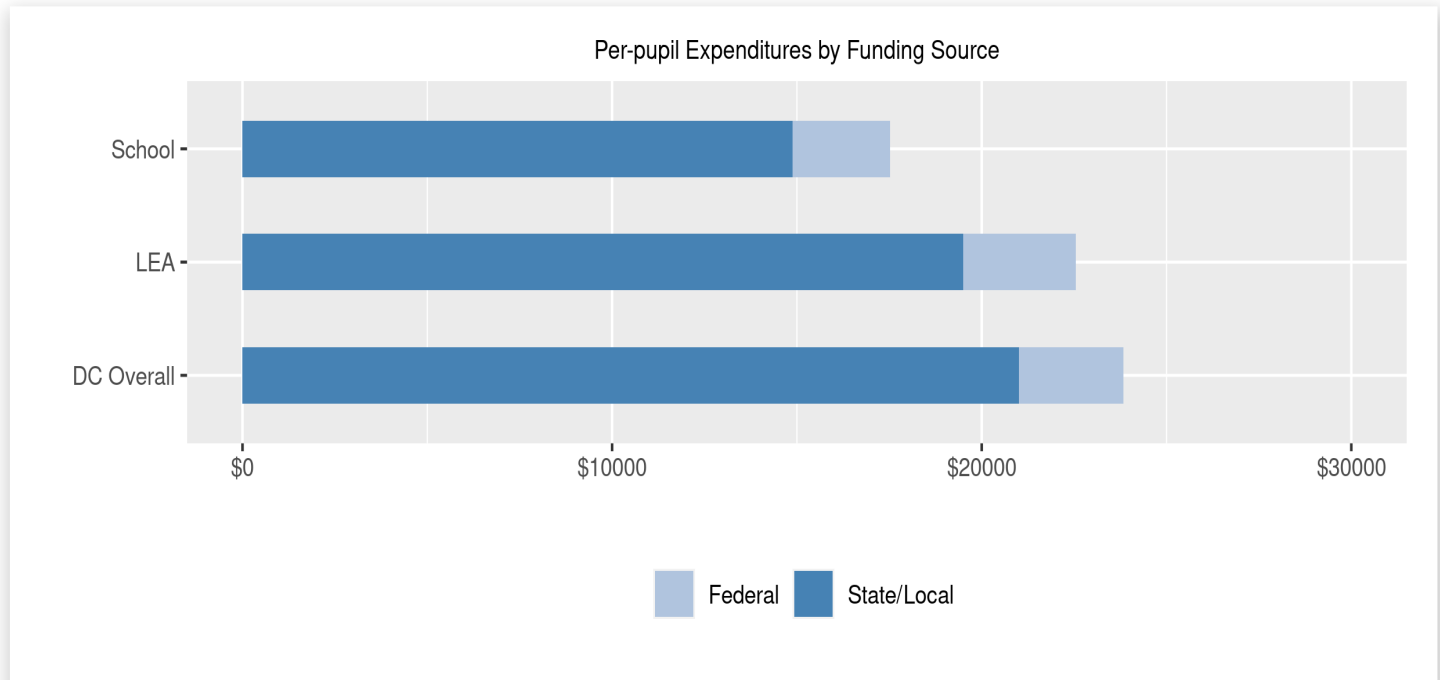
Per-pupil expenditure amount is calculated by dividing the total school expenditures by the October enrollment audit count of public school students.

Per-pupil: \$17,517

October Enrollment Audit Count: 1463

Per-pupil Expenditures by Funding Source

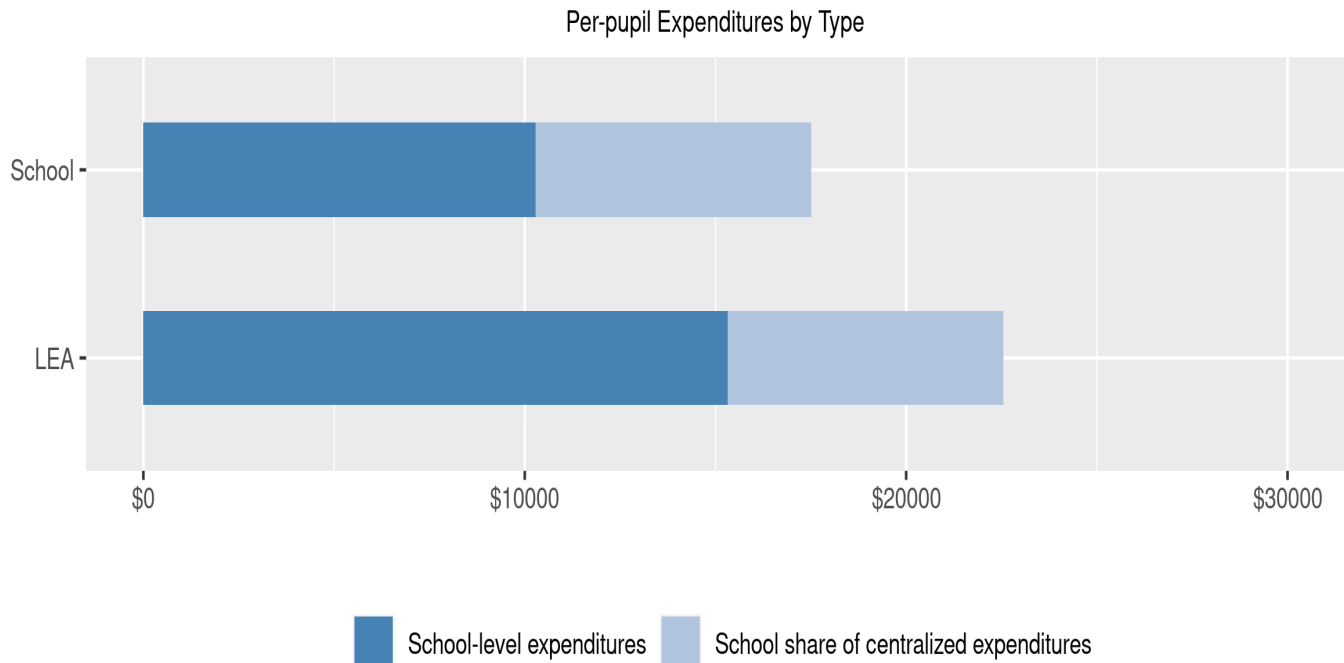
Details are provided about the funding sources for per-pupil expenditures. State/local sources represent revenue received directly from DC, including local grants and per-pupil funding. Federal sources include federal revenue, such as Title I funds and IDEA funding. Per-pupil expenditures are displayed compared to the LEA and DC average.



	State/Local	Federal	Total
School	\$14,877 84.93%	\$2,640 15.07%	\$17,517
LEA	\$19,494 86.44%	\$3,059 13.56%	\$22,553
DC Overall	\$21,002 88.14%	\$2,827 11.86%	\$23,828

Finance (cont.) - Per-pupil Expenditures by Type

Details are provided about the distribution of expenditures between school-level and centralized. School-level expenditures include spending on teacher and administrative salaries, books, supplies, and business costs. Centralized expenditures include the portion of spending at the LEA's central office that are allocated to the school. (Note: LEAs with only one school site do not report separate centralized expenditures)



	School-level expenditures	School share of centralized expenditures	Total
School	\$10,288 58.73%	\$7,229 41.27%	\$17,517
State/Local	\$9,853	\$5,024	
Federal	\$435	\$2,205	
LEA	\$15,324 67.95%	\$7,229 32.05%	\$22,553
State/Local	\$14,470	\$5,024	
Federal	\$854	\$2,205	