

Message from the School

Benjamin Banneker Academic High School offers one of the District's most rigorous academic programs. The school's mission includes development of life-long skills for learning, sound moral character and regard for the welfare of the community. It prepares students for future leadership roles and admissions to a four year college or university. Banneker empowers students to be globally competitive.



📍 1600 9th St. NW, Washington, DC 20001

🏠 Ward 6

☎ (202) 671-6320

School Instructional Hours

Monday: 09:00AM - 03:30PM

Tuesday: 09:00AM - 03:30PM

Wednesday: 09:00AM - 03:30PM

Thursday: 09:00AM - 03:30PM

Friday: 09:00AM - 03:30PM

Total Students (2021-22 Ever-Enrolled): 553

Total Teachers: 35

Total School Leaders: 6

Grades Served: 9, 10, 11, 12

Principal: Anita Berger

Title-I Status: Yes

Local Education Agency (LEA): District of Columbia Public Schools

School Uniforms Required: No

Bus Line(s): 63, 64, 70, 79, G2, G8

Metro Line(s): Green/Yellow Lines: Shaw Station

Before Care Offered: No

After Care Offered: No

School Program Information

Advanced Placement
Arts Integration
Blended Learning
Dual College Enrollment
Extended day
International Baccalaureate
Interscholastic Sports

Parent Organization

Parent Organization Offered: Yes

Parent Organization Contact: Not Provided

Parent Organization Website:
www.benjaminbanneker.org

Extracurricular & Enrichment Activities

Electric Car Club
Debate Club
International Club
Varsity BB-Track-SoftBall-Soccer-Volley Ball-Tennis-Cheerleading
Poetry Club
Debate Club
Newspaper Club
It's Academic

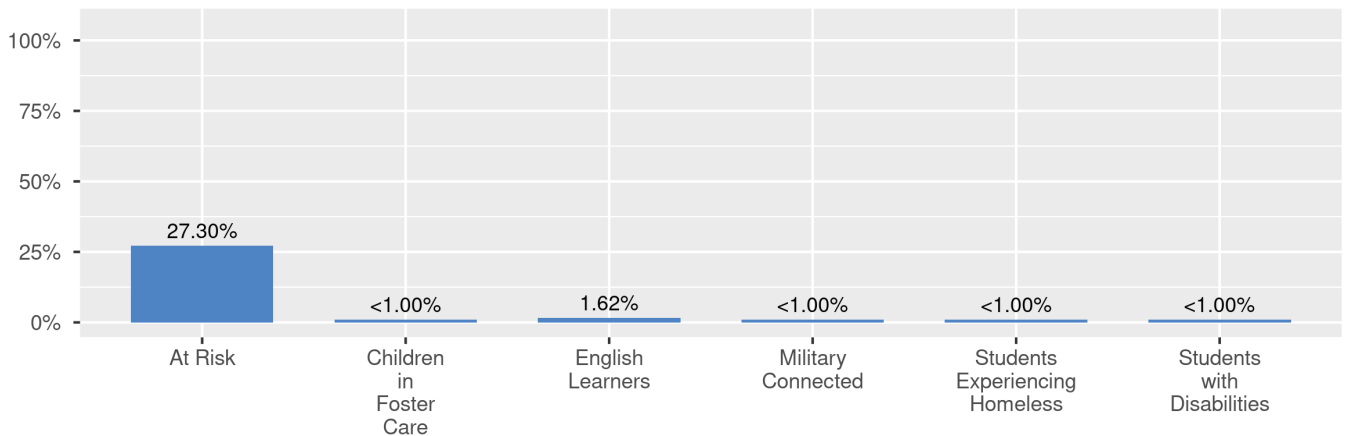
School Enrollment

The ever-enrolled count is the total number of students who are enrolled at any point during the school year; a student who attends a school for one day or 180 days is counted the same way. For this reason, the ever-enrolled count will always be larger than the audit count.

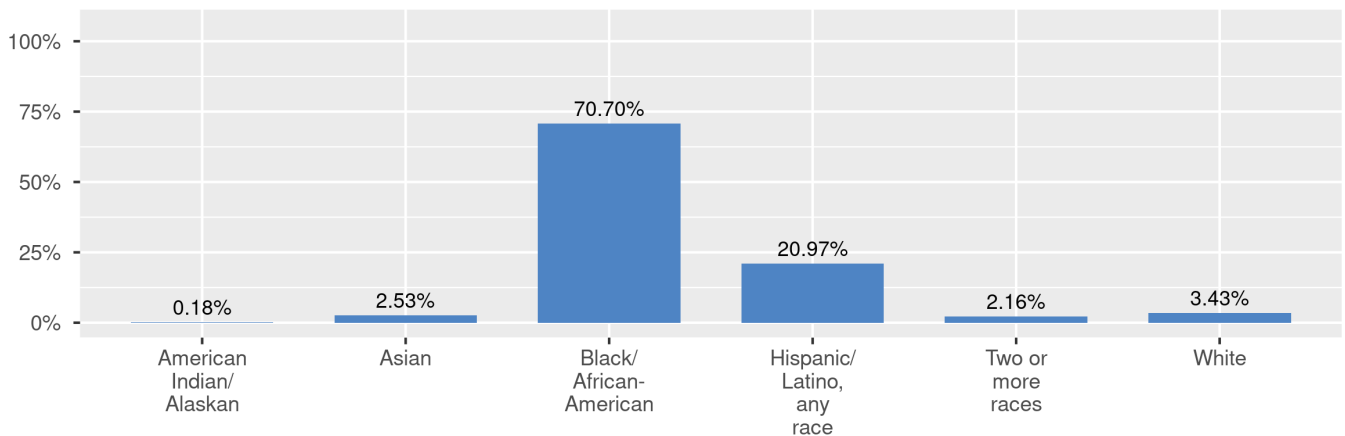
2020-21 Ever-Enrolled by Grade Level

Grade 09	Grade 10	Grade 11	Grade 12
164	157	119	113

Enrollment by Student Group

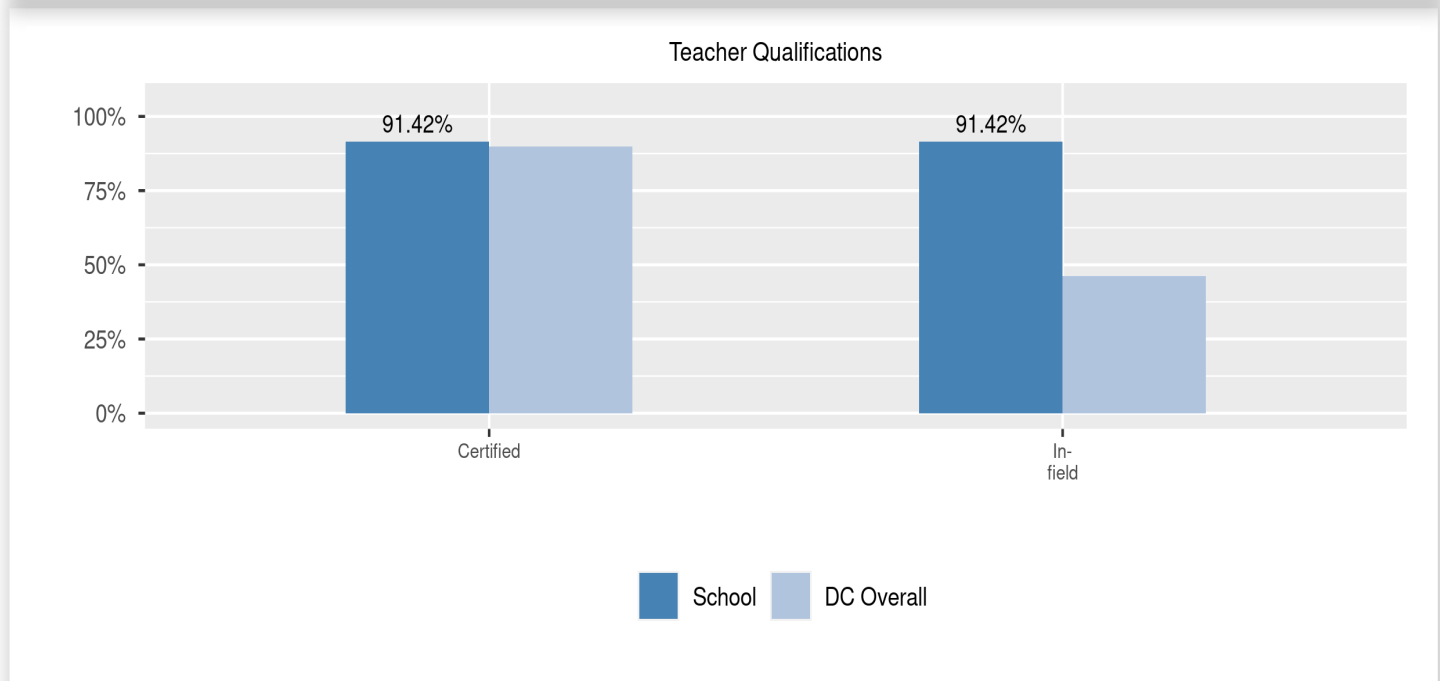
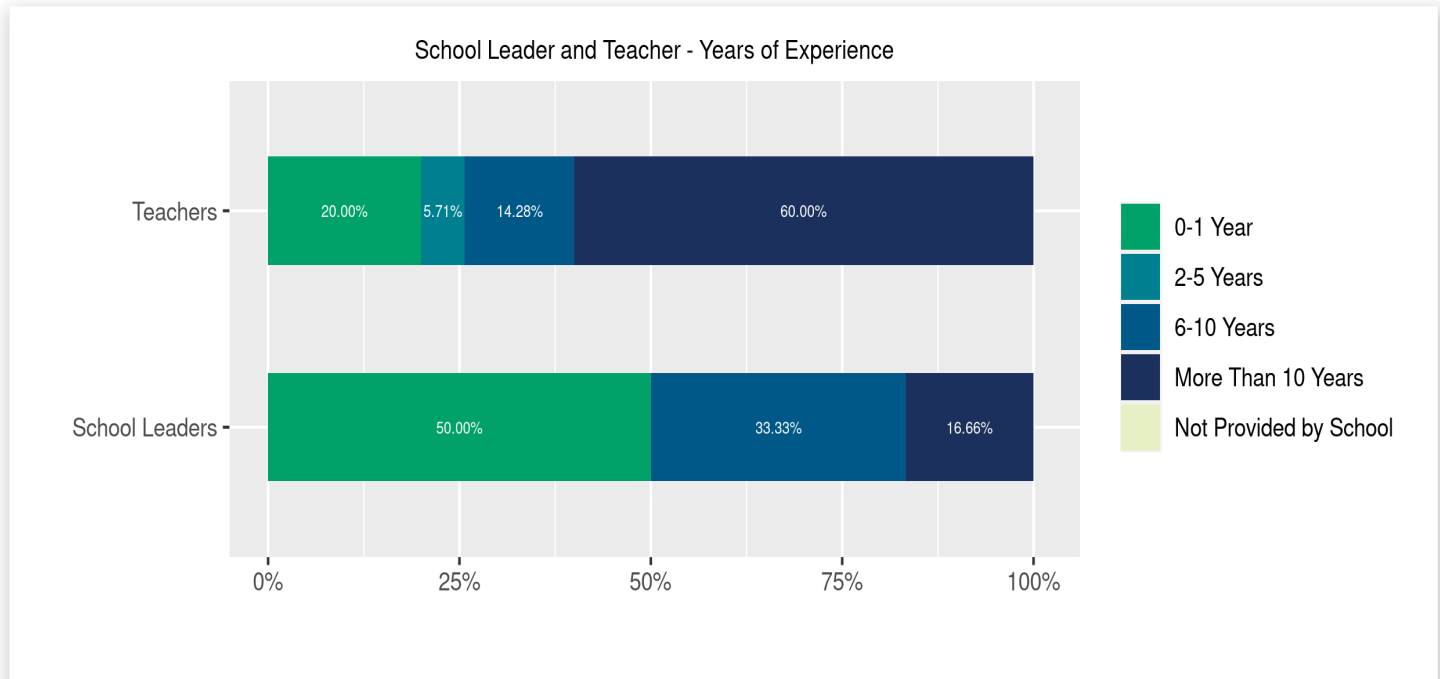


Enrollment by Race/Ethnicity



Teacher and School Leader Data

This page includes information about teacher experience levels in DC Public Schools and public charter schools. For DC Public Schools, it also includes information about credentialed and in-field teachers.



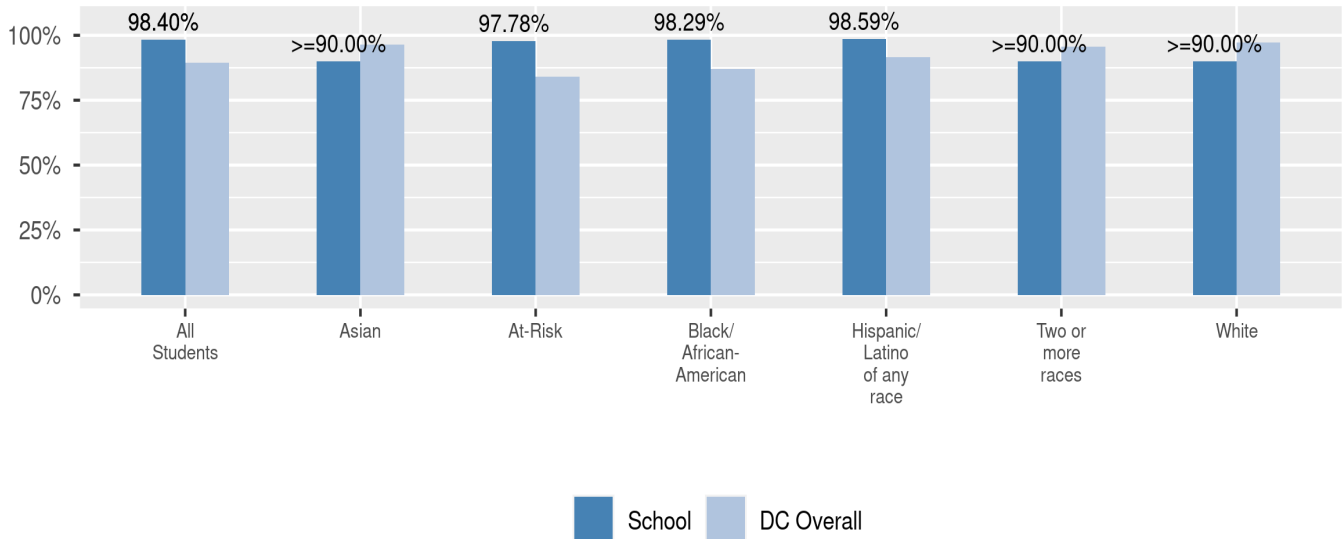
School Safety and Discipline

Information about discipline and school safety in DC, in accordance with the U.S. Department of Education's Civil Rights Data collection, including suspensions and expulsions for students, school related arrests, reported incidents of violence, bullying, and harassment are available in the OSSE Discipline report and data files (<https://osse.dc.gov/page/data-and-reports-0>).

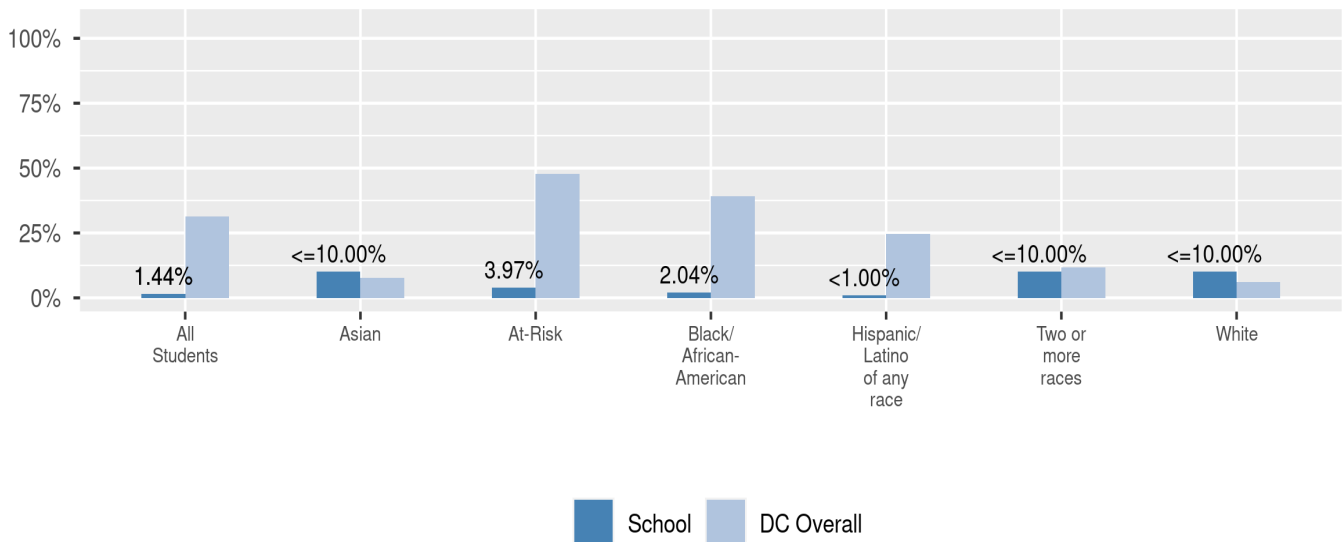
Attendance

Review information on attendance below, including in-seat attendance for all students (there is a separate measure of attendance for pre-K students, since pre-K is not compulsory), and the percentage of students chronically absent, meaning that they miss at least 10% of the school days for which they are enrolled throughout the school year at the school. Note: Due to variations in schools schedules, attendance data may have been collected differently by schools on synchronous and asynchronous learning days. As a result attendance data is unique to this school year and not necessarily comparable to prior years.

In-Seat Attendance



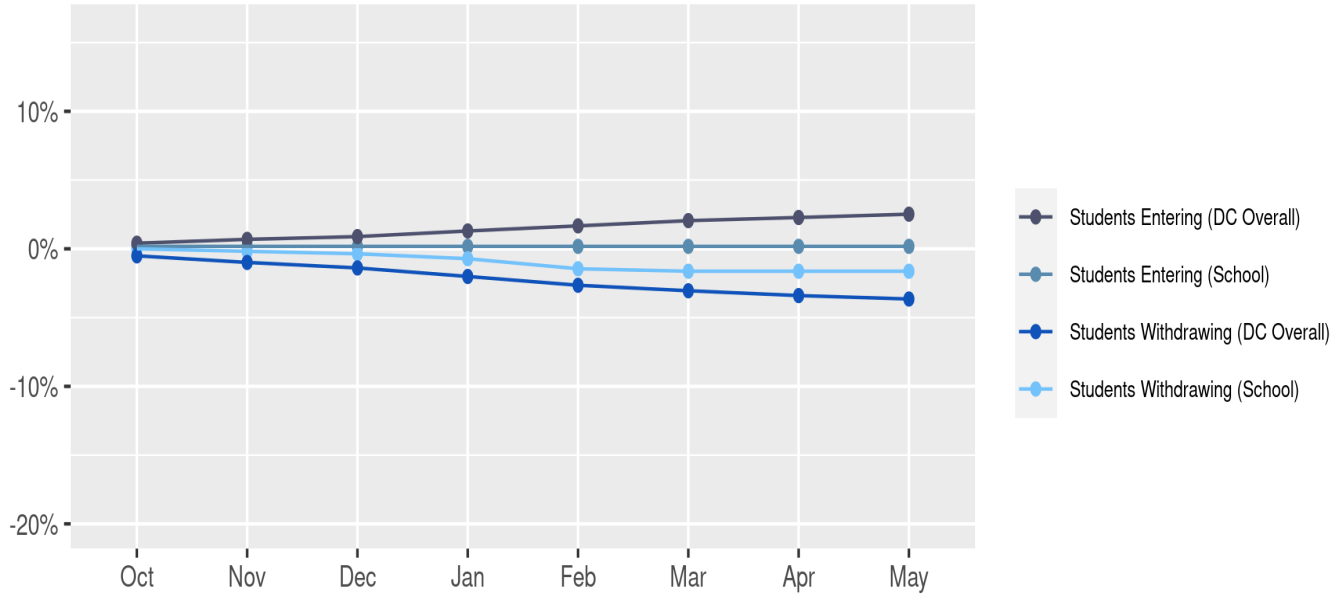
Chronic Absenteeism



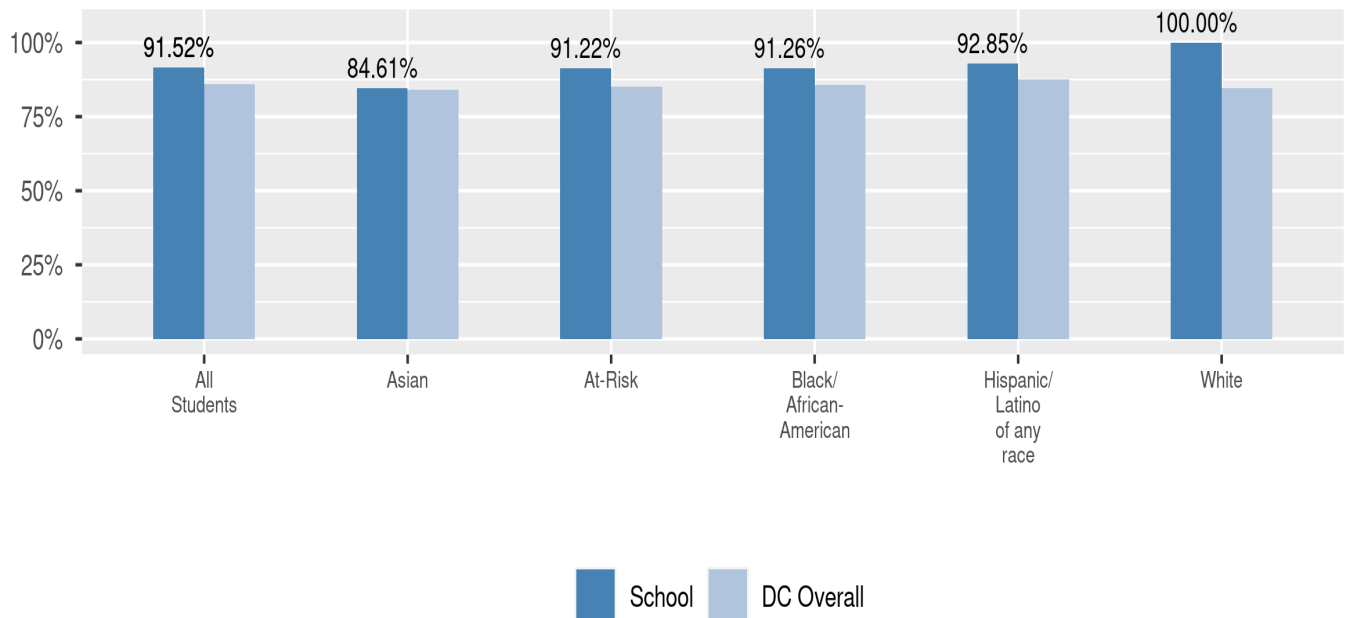
Student Enrollment Changes

Explore information on how much the population at the school changes throughout the year or from year to year. It shows information about changes in enrollment, including whether students leave or enter the school mid-year, and whether eligible students choose to re-enroll in the school.

Mobility



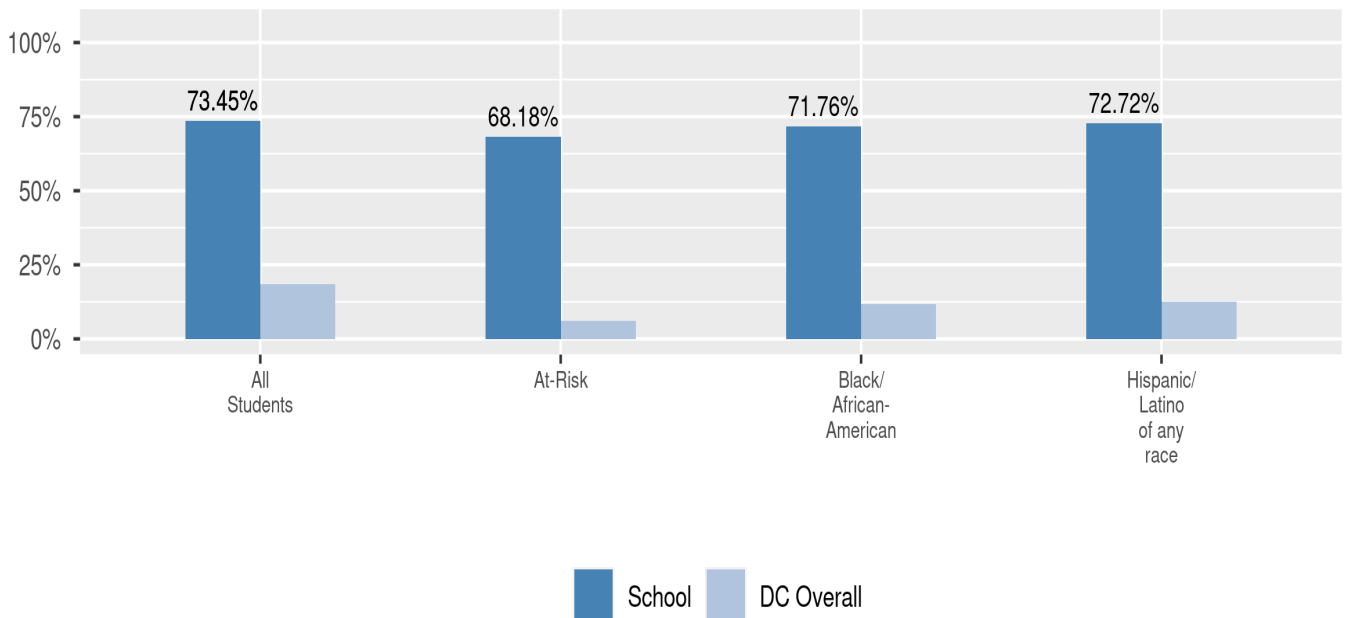
Re-Enrollment



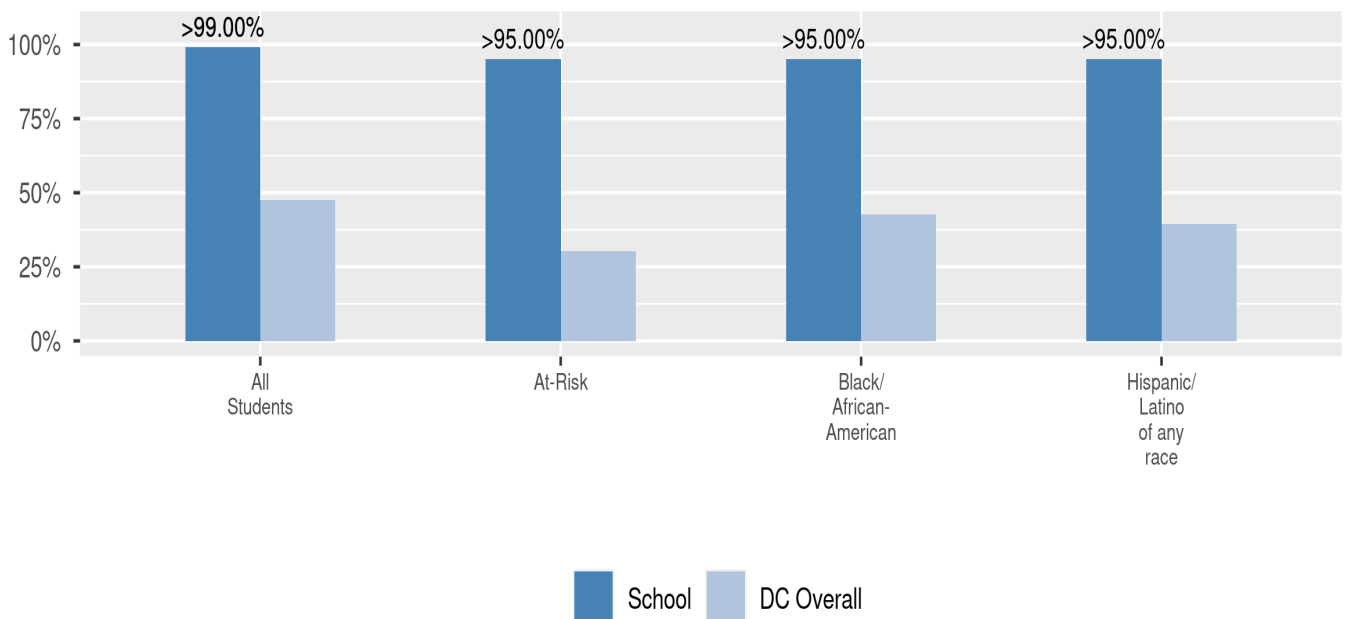
College and Career Readiness

This section shows whether students at this school are participating in college and career readiness opportunities, such as Advanced Placement (AP) or International Baccalaureate (IB) exams, and how they are performing on these and on the SAT.

SAT College and Career Ready Benchmark

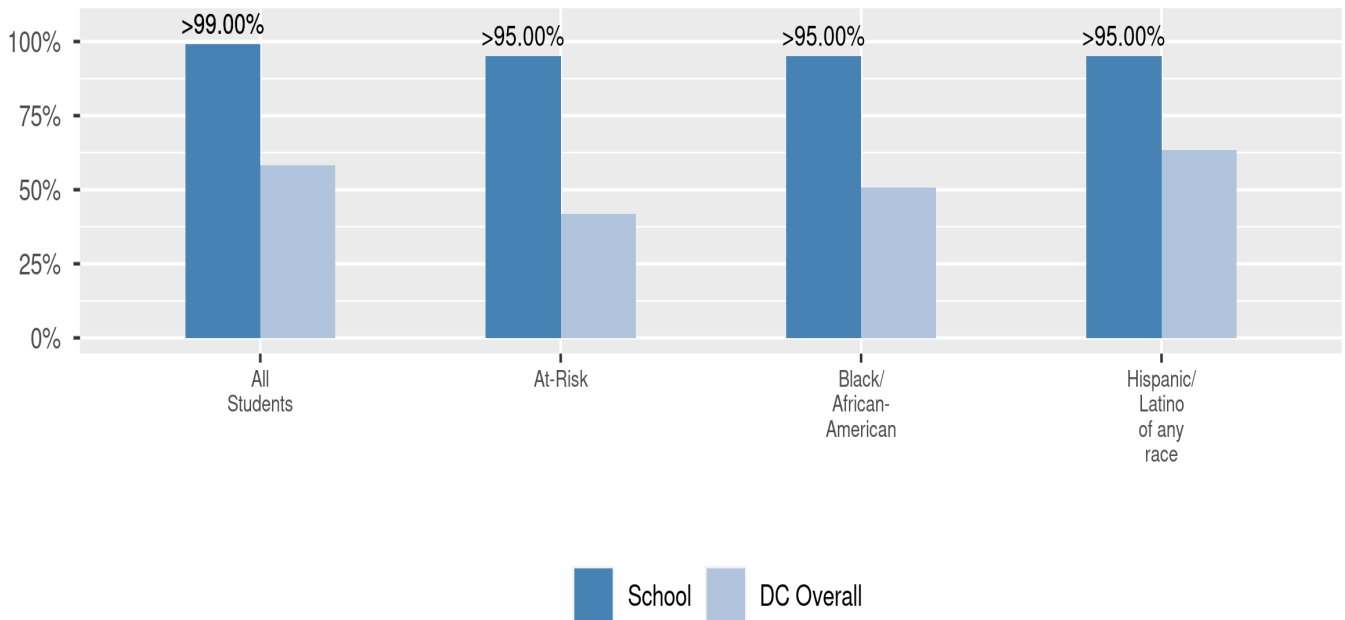


SAT DC Percentile

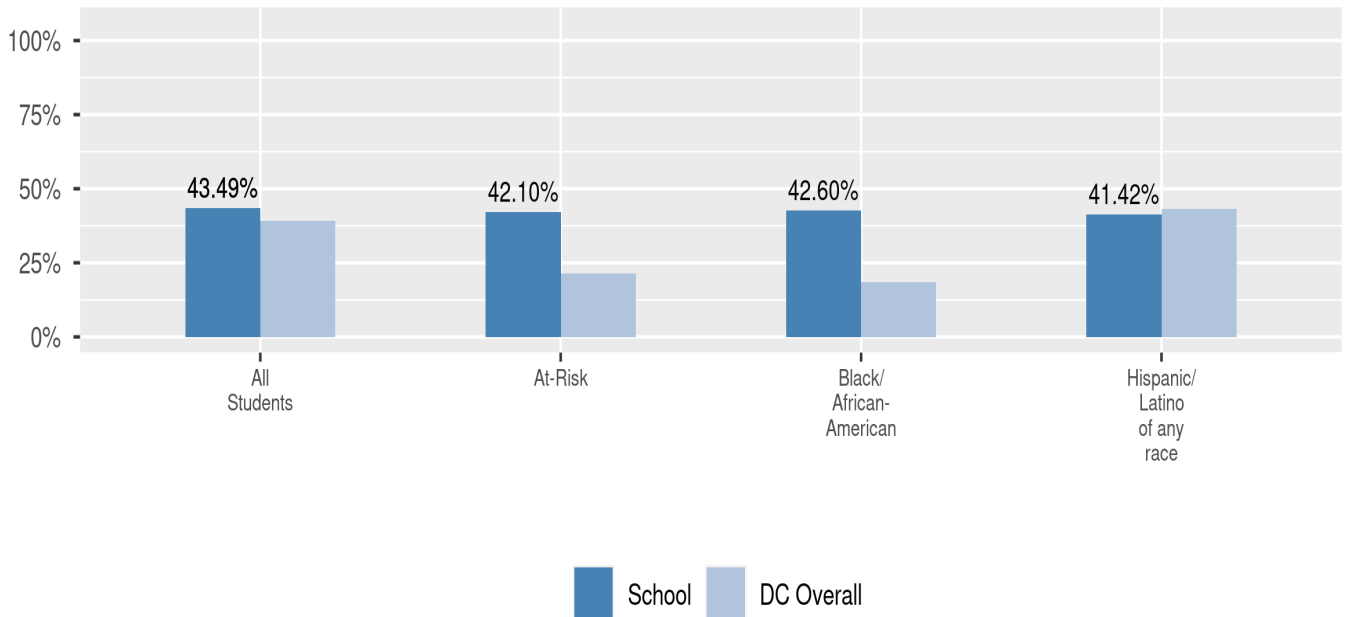


College and Career Readiness (cont.)

AP/IB Participation

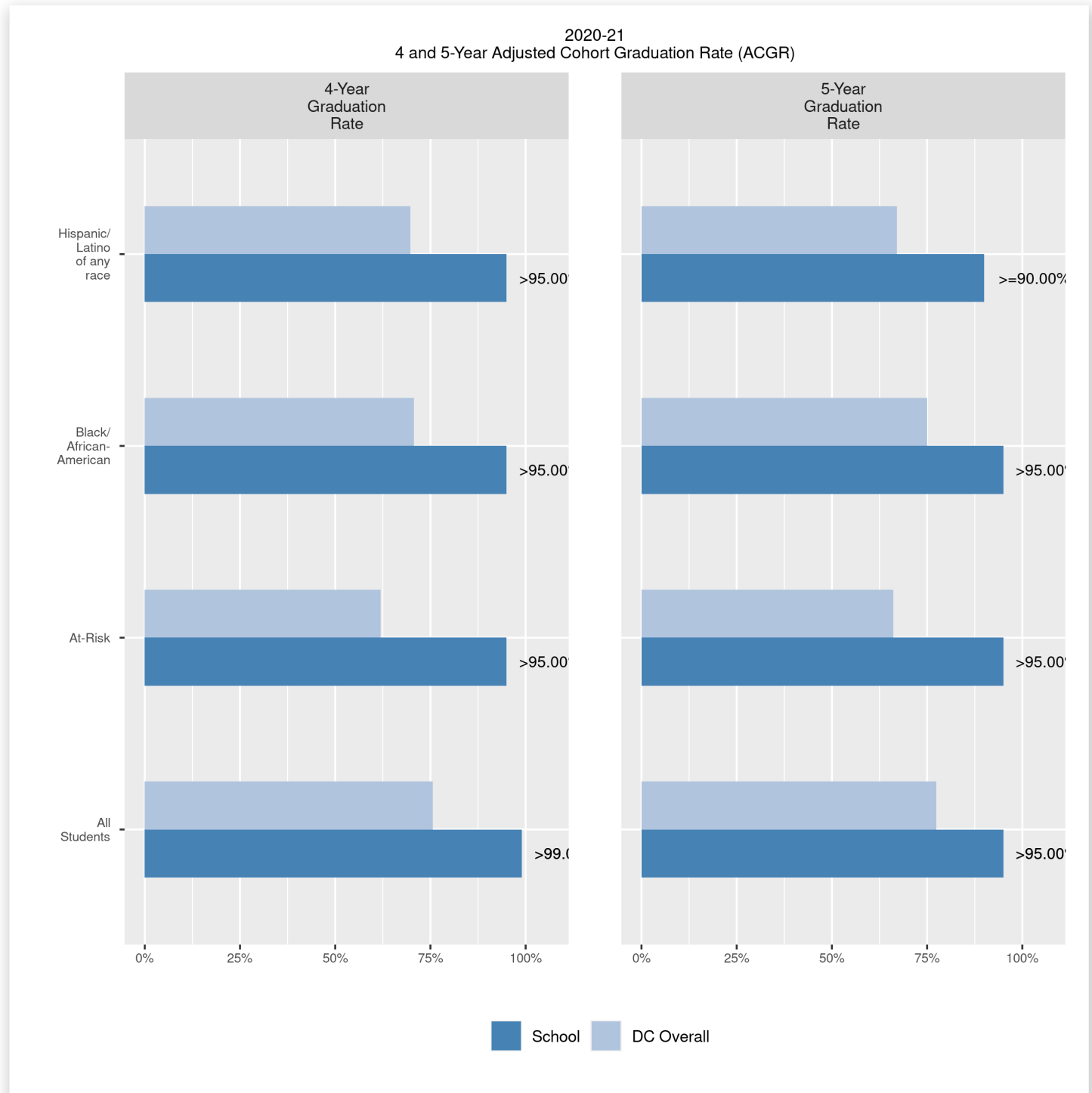


AP/IB Performance



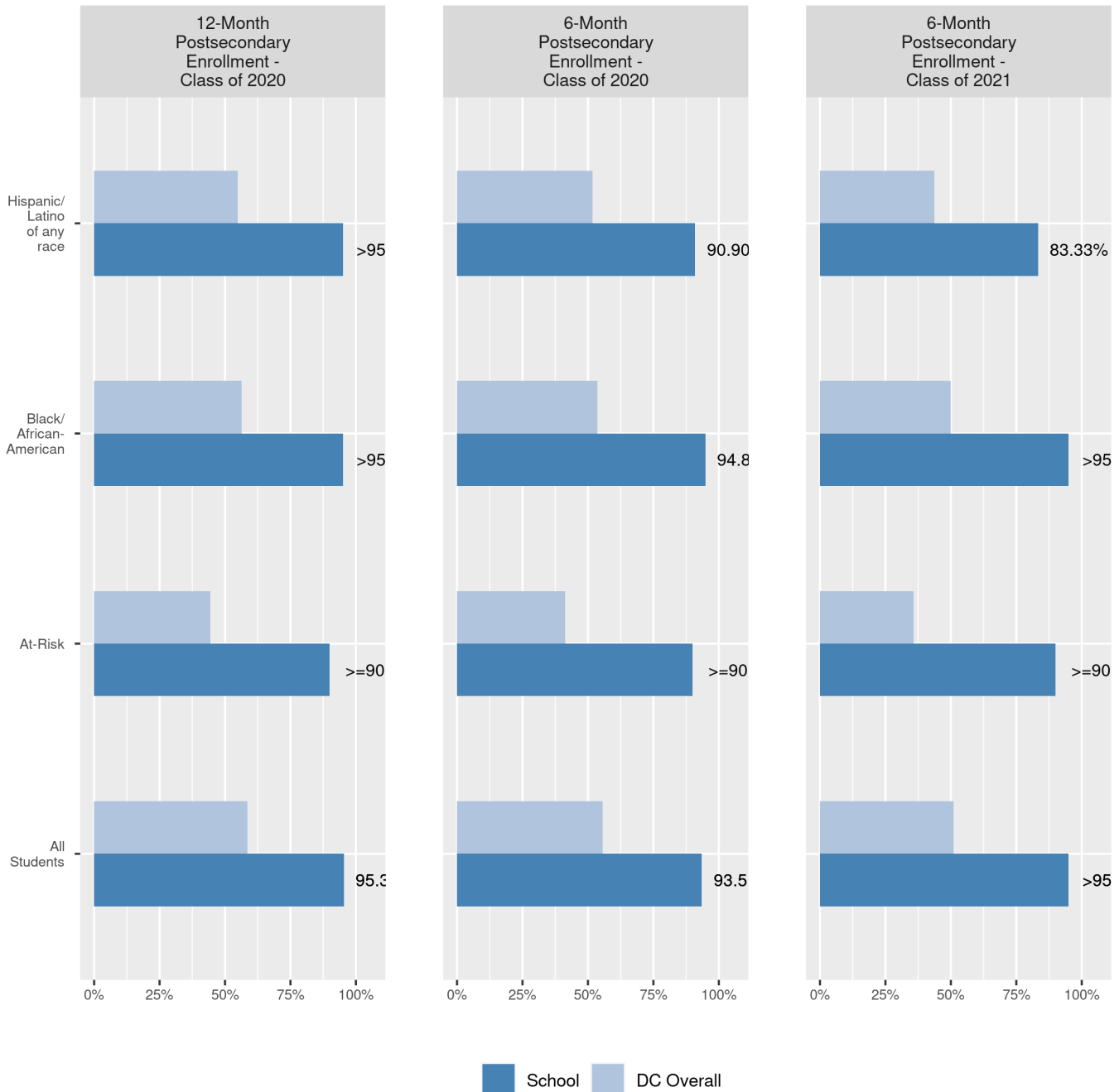
Graduation Rates

This page includes two high school graduation measures: The percentage of students in the school who graduate in 4 years and the percentage of students in the school who graduate in 5 years.



College Enrollment Rates

The percentage of high school graduates from the class of 2019 and 2020 who enrolled in a post-secondary degree-granting institution within 6 months and within 12 months following graduation.



Finance

Per-pupil expenditures represent the average amount of money spent on educating each student. In other words, this value represents the total amount of actual school expenditures divided by the number of students in the school.

2021 Per-pupil Expenditures

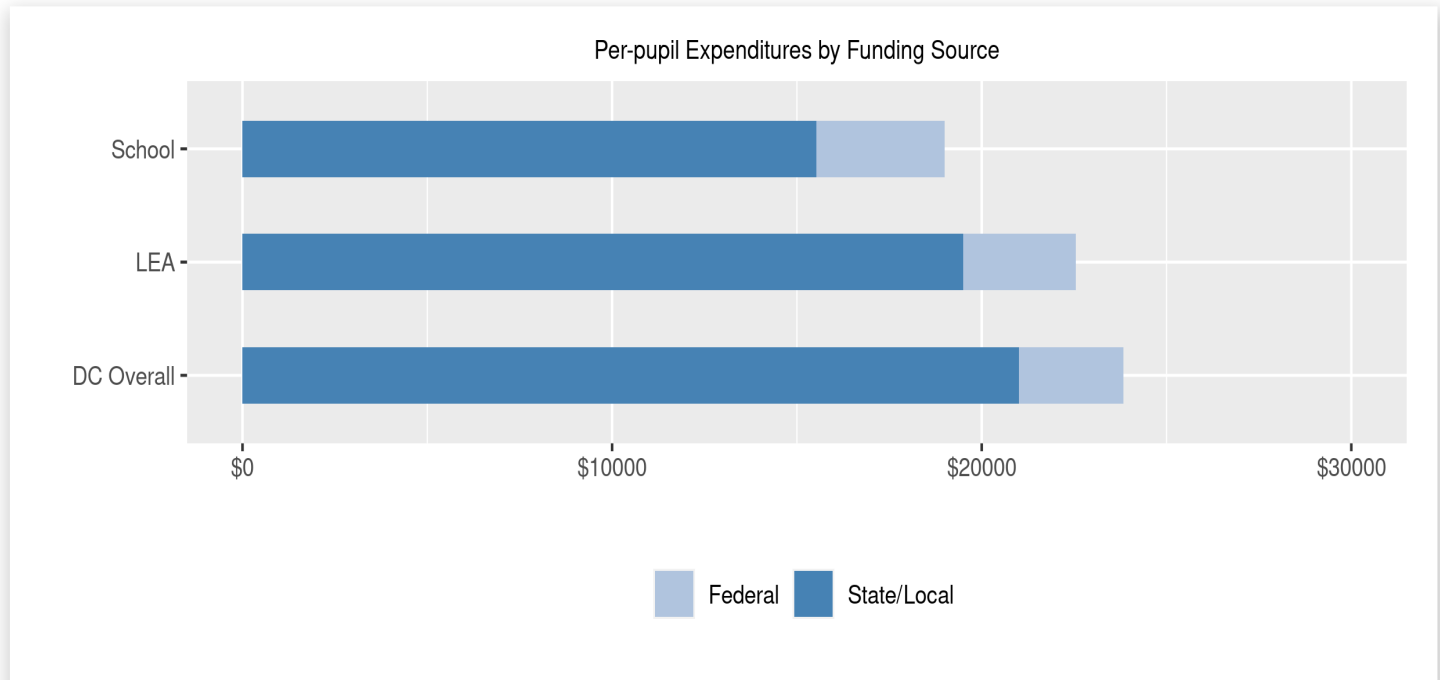
Per-pupil expenditure amount is calculated by dividing the total school expenditures by the October enrollment audit count of public school students.

Per-pupil: \$19,001

October Enrollment Audit Count: 549

Per-pupil Expenditures by Funding Source

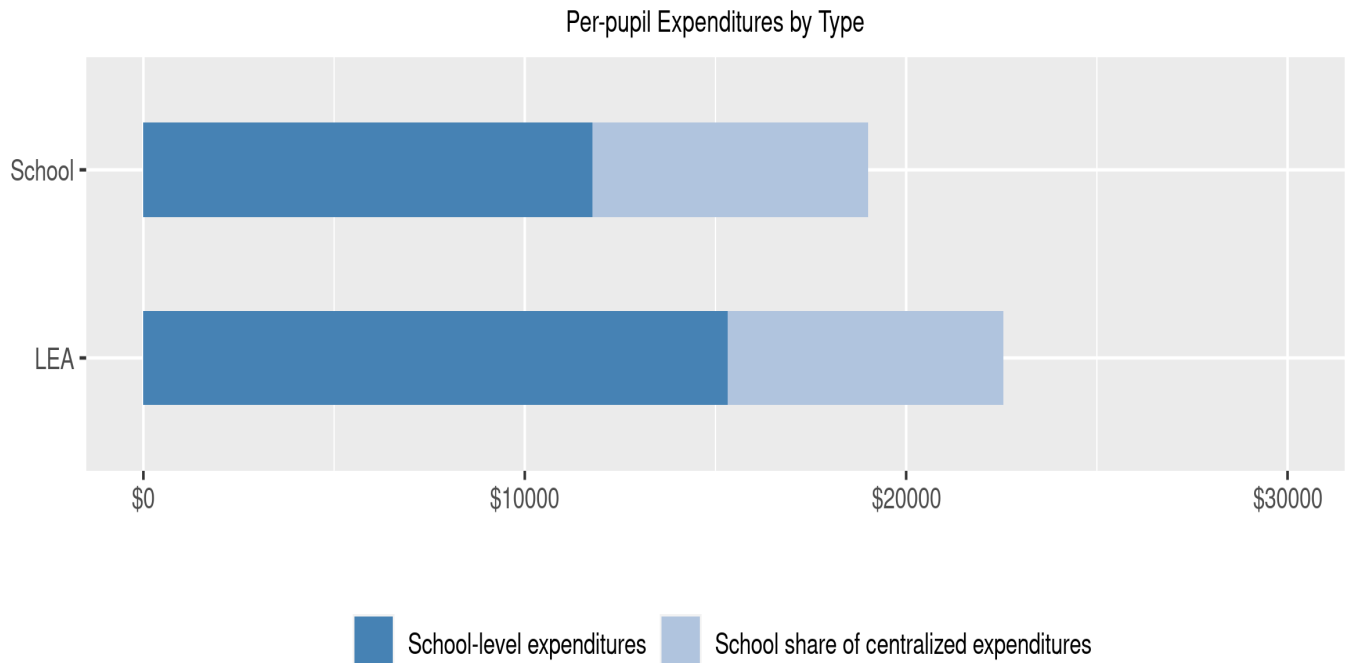
Details are provided about the funding sources for per-pupil expenditures. State/local sources represent revenue received directly from DC, including local grants and per-pupil funding. Federal sources include federal revenue, such as Title I funds and IDEA funding. Per-pupil expenditures are displayed compared to the LEA and DC average.



	State/Local	Federal	Total
School	\$15,528 81.72%	\$3,473 18.28%	\$19,001
LEA	\$19,494 86.44%	\$3,059 13.56%	\$22,553
DC Overall	\$21,002 88.14%	\$2,827 11.86%	\$23,828

Finance (cont.) - Per-pupil Expenditures by Type

Details are provided about the distribution of expenditures between school-level and centralized. School-level expenditures include spending on teacher and administrative salaries, books, supplies, and business costs. Centralized expenditures include the portion of spending at the LEA's central office that are allocated to the school. (Note: LEAs with only one school site do not report separate centralized expenditures)



	School-level expenditures	School share of centralized expenditures	Total
School	\$11,772 61.95%	\$7,229 38.05%	\$19,001
State/Local	\$10,504	\$5,024	
Federal	\$1,268	\$2,205	
LEA	\$15,324 67.95%	\$7,229 32.05%	\$22,553
State/Local	\$14,470	\$5,024	
Federal	\$854	\$2,205	